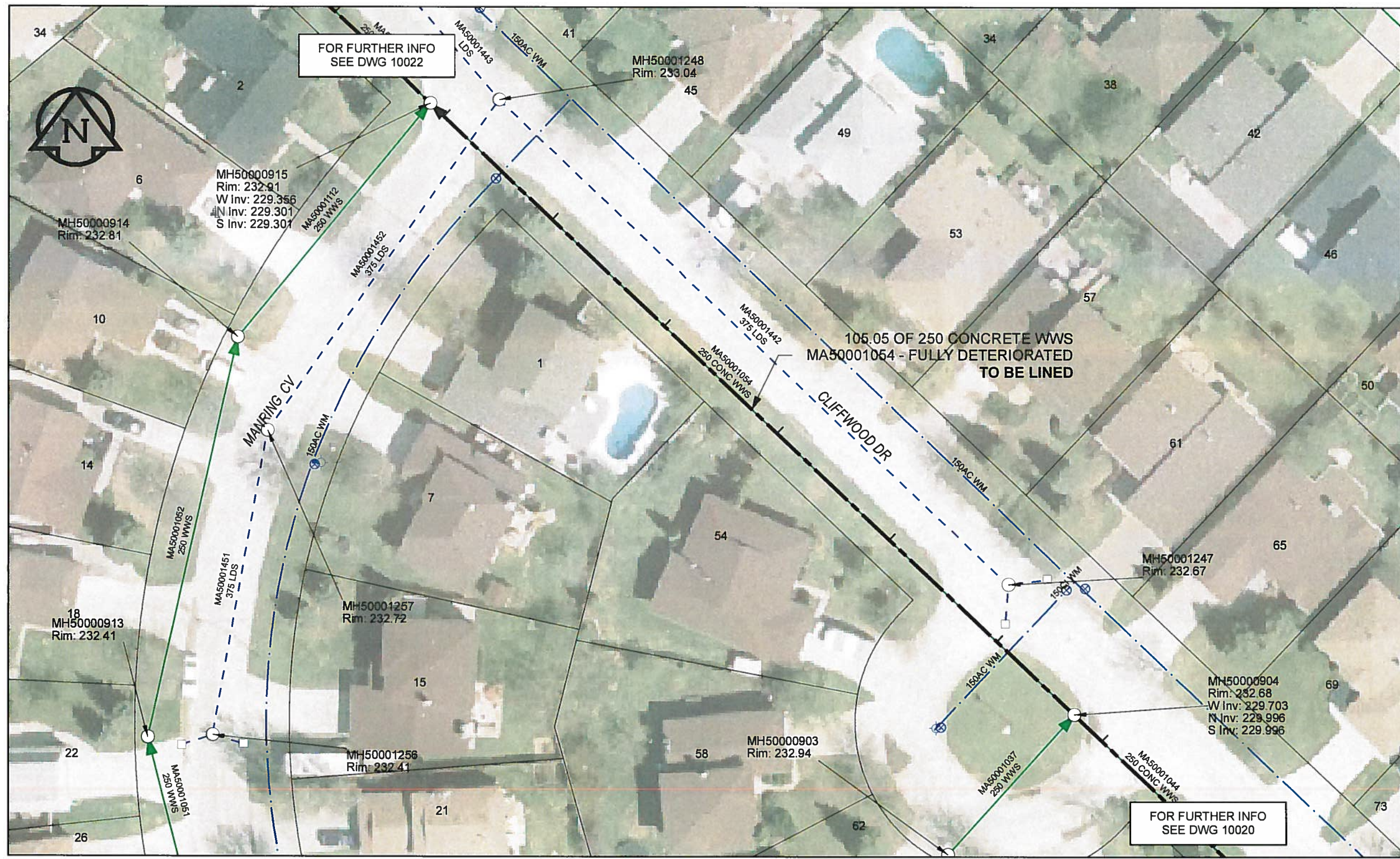


B SIZE 11" X 17" (279mm x 432mm)

FILE NAME: 60224031-01-C-026-R0X.PDF Saved By: JZ



SEWER JUNCTION INFORMATION

REF MH*	DIST FROM*	SIZE*	CLOCK AT*
MH50000904	12.60	150Ø	03
MH50000904	30.10	150Ø	02
MH50000904	48.40	150Ø	03
MH50000904	66.80	150Ø	02
MH50000904	85.10	150Ø	03
MH50000904	102.80	150Ø	03

*JUNCTION INFORMATION FROM VIDEO INSPECTION

WARNING
 IF POWER EQUIPMENT OR EXPLOSIVES ARE TO BE USED FOR EXCAVATION ON THIS PROJECT, THE CONTRACTOR MUST:
 1) NOTIFY THE GAS COMPANY OF THE PROPOSED LOCATION OF EXCAVATION
 2) TAKE PRECAUTION TO AVOID DAMAGE TO GAS COMPANY INSTALLATIONS
 SEE PROVINCIAL REGULATION 140/92 FOR DETAILS

AECOM
 Certificate of Authorization
 AECOM Canada Ltd.
 No. 4671 Date: 12/02/12

METRIC
 WHOLE NUMBERS INDICATE MILLIMETRES
 DECIMALIZED NUMBERS INDICATE METRES
 0 2.5 5 10 15 20
 Meters

BID OPPORTUNITY NO.1048-2011

AECOM REVIEW DRIFT CHK

LOCATION APPROVED UNDERGROUND STRUCTURES

SUPR. U/G STRUCTURES COMMITTEE	DATE

NOTE:
 LOCATION OF UNDERGROUND STRUCTURES AS SHOWN ARE BASED ON THE BEST INFORMATION AVAILABLE. BUT NO GUARANTEE IS GIVEN THAT ALL EXISTING UTILITIES ARE SHOWN OR THAT THE GIVEN LOCATIONS ARE EXACT. CONFIRMATION OF EXISTENCE AND EXACT LOCATION OF ALL SERVICES MUST BE OBTAINED FROM THE INDIVIDUAL UTILITIES BEFORE PROCEEDING WITH CONSTRUCTION.

Can-Net GPS Reference Station WINN/810

NO.	ISSUED FOR CONSTRUCTION	DATE	BY
0	ISSUED FOR CONSTRUCTION	12/02/12	JZ
NO.	REVISIONS	YY/MM/DD	BY

AECOM

DESIGNED BY	ALD	CHECKED BY	PL
DRAWN BY	JZ	APPROVED BY	<i>[Signature]</i>
HOR. SCALE	1:500	RELEASED FOR CONSTRUCTION	<i>[Signature]</i>
VERT. SCALE	N/A	DATE	12/02/12

PROFESSIONAL'S SEAL
 PROVINCE OF MANITOBA
 K. FITCHETT
 REGISTERED ENGINEER
 CONSULTANT DRAWING NO. 60224031-01-C-026-R0X.mxd

THE CITY OF WINNIPEG WATER AND WASTE DEPARTMENT

2011 WASTE WATER SEWER RENEWALS
 BY CIPP LINING
 CONTRACT 20
 CLIFFWOOD DR
 105m NW OF MANRING CV (W LEG) TO MANRING CV (W LEG)

SHEET 26 OF 112
 CITY DRAWING NUMBER
10021 REV 0