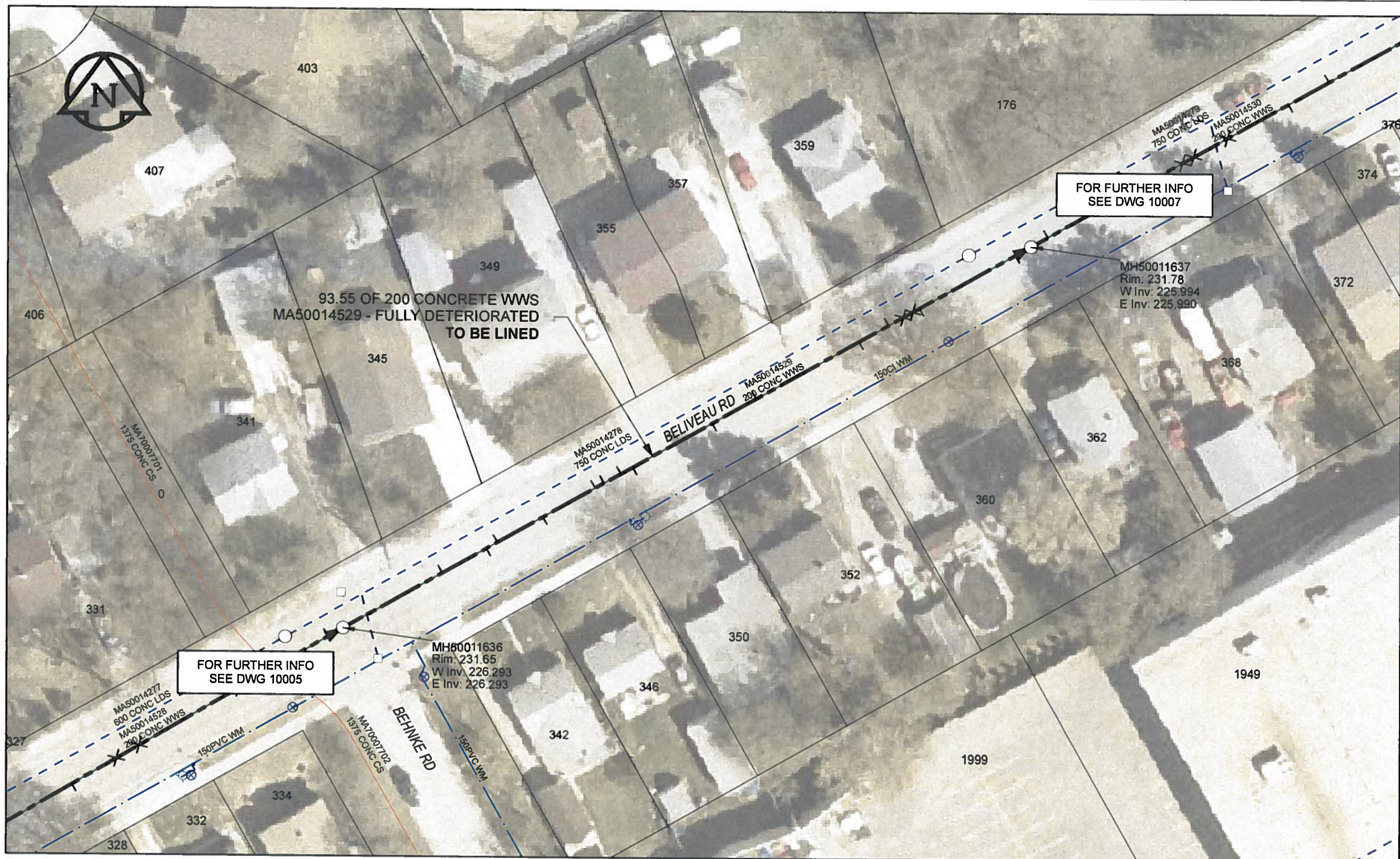


B SIZE 11" X 17" (279mm x 432mm)



**SEWER JUNCTION INFORMATION**

REF MH*	DIST FROM*	SIZE*	CLOCK AT*
MH50011636	13.50	150Ø	11
MH50011636	19.50	150Ø	01
MH50011636	21.00	150Ø	11
MH50011636	27.20	150Ø	01
MH50011636	34.30	150Ø	11
MH50011636	35.50	150Ø	11
MH50011636	37.80	150Ø	11
MH50011636	39.40	150Ø	01
MH50011636	50.20	150Ø	02
MH50011636	56.20	150Ø	11
MH50011636	70.20	150Ø	01
MH50011636	74.20	150Ø	10
MH50011636	76.20	150Ø	12
MH50011636	77.50	150Ø	12
MH50011636	78.40	150Ø	01
MH50011636	91.40	150Ø	01

\*JUNCTION INFORMATION FROM VIDEO INSPECTION

**WARNING**  
 IF POWER EQUIPMENT OR EXPLOSIVES ARE TO BE USED FOR EXCAVATION ON THIS PROJECT, THE CONTRACTOR MUST:  
 1) NOTIFY THE GAS COMPANY OF THE PROPOSED LOCATION OF EXCAVATION.  
 2) TAKE PRECAUTION TO AVOID DAMAGE TO GAS COMPANY INSTALLATIONS.  
 SEE PROVINCIAL REGULATION 140/92 FOR DETAILS.

**AECOM**  
 Certificate of Authorization  
 AECOM Canada Ltd.  
 No. 4671 Date: 12/02/16

**METRIC**  
 WHOLE NUMBERS INDICATE MILLIMETRES  
 DECIMALIZED NUMBERS INDICATE METRES

0 2.5 5 10 15 20 Meters

BID OPPORTUNITY NO.1048-2011

AECOM REVIEW DRAFT CHK

FILE NAME: 60224031-01-C-011-R0X.PDF Saved By: JZ

**LOCATION APPROVED UNDERGROUND STRUCTURES**

SUPR. U/G STRUCTURES	DATE

**NOTE:**  
 LOCATION OF UNDERGROUND STRUCTURES AS SHOWN ARE BASED ON THE BEST INFORMATION AVAILABLE. BUT NO GUARANTEE IS GIVEN THAT ALL EXISTING UTILITIES ARE SHOWN OR THAT THE GIVEN LOCATIONS ARE EXACT. CONFIRMATION OF EXISTENCE AND EXACT LOCATION OF ALL SERVICES MUST BE OBTAINED FROM THE INDIVIDUAL UTILITIES BEFORE PROCEEDING WITH CONSTRUCTION.

Can-Net GPS Reference Station WINN/810

NO.	ISSUED FOR CONSTRUCTION	YY/MM/DD	BY
0	ISSUED FOR CONSTRUCTION	12/02/21	JZ

**AECOM**

DESIGNED BY	ALD	CHECKED BY	PL
DRAWN BY	JZ	APPROVED BY	<i>Byron Leblond</i>
HOR. SCALE	1:500	RELEASED FOR CONSTRUCTION	<i>[Signature]</i>
VERT. SCALE	N/A	DATE	12/02/16

PROFESSIONAL'S SEAL

CONSULTANT DRAWING NO. 60224031-01-C-011-R0X.mxd

**THE CITY OF WINNIPEG WATER AND WASTE DEPARTMENT**

2011 WASTE WATER SEWER RENEWALS  
 BY CIPP LINING  
 CONTRACT 20  
 BELVEAU ROAD  
 93.5m E OF BEHNKE RD TO BEHNKE RD

SHEET 11 OF 112  
 CITY DRAWING NUMBER 10006 REV 0