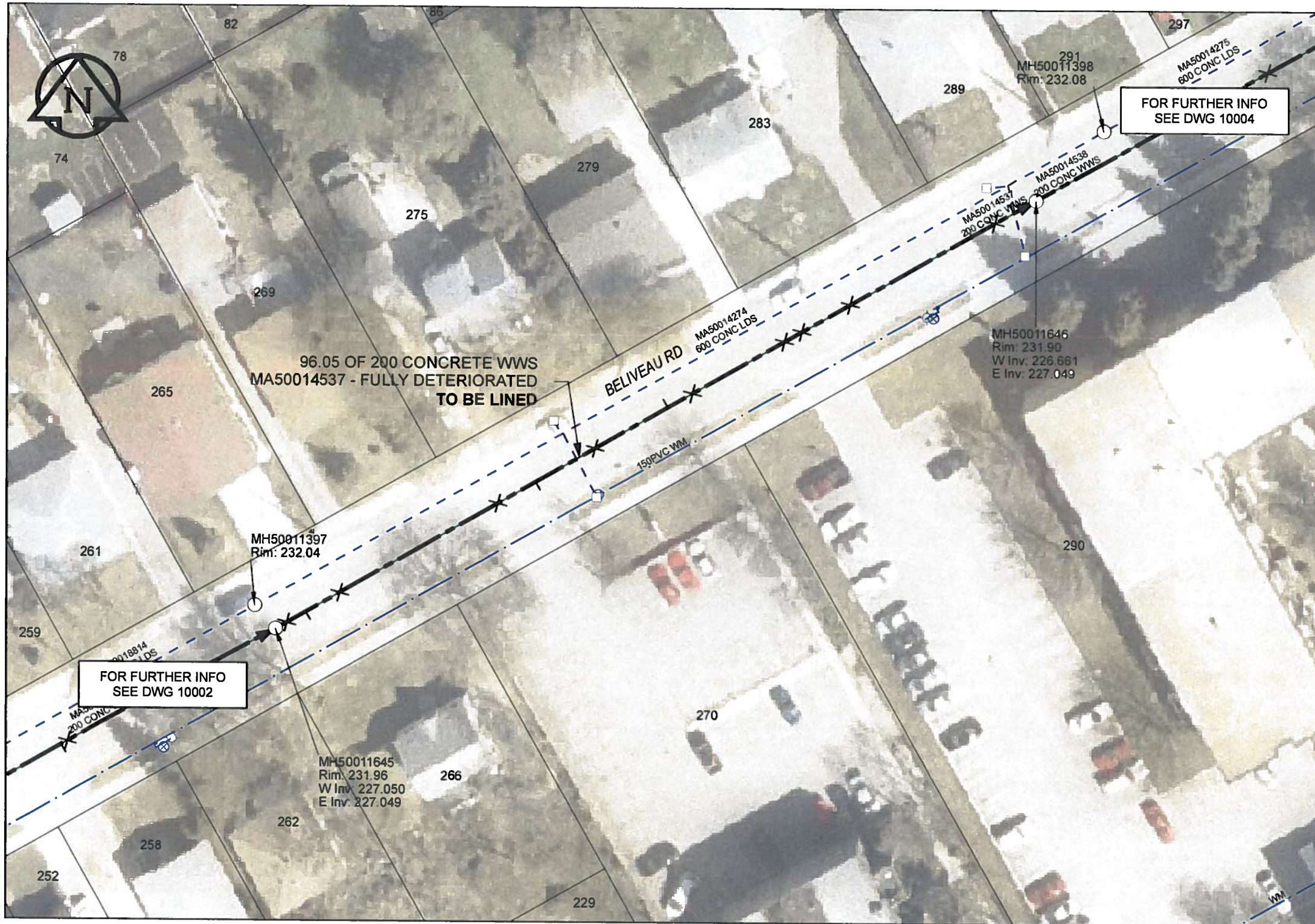


B SIZE 11" X 17" (279mm x 432mm)



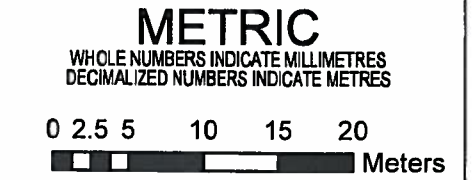
SEWER JUNCTION INFORMATION

REF MH*	DIST FROM*	SIZE*	CLOCK AT*
MH50011645	1.40	150Ø	12
MH50011645	3.80	150Ø	01
MH50011645	8.10	150Ø	12
MH50011645	28.10	150Ø	12
MH50011645	32.90	150Ø	01
MH50011645	40.40	150Ø	12
MH50011645	49.60	150Ø	11
MH50011645	52.70	150Ø	12
MH50011645	64.30	150Ø	12
MH50011645	66.50	150Ø	12
MH50011645	72.60	150Ø	12
MH50011645	90.90	150Ø	12
MH50011645	93.30	150Ø	10

*JUNCTION INFORMATION FROM VIDEO INSPECTION

WARNING
 IF POWER EQUIPMENT OR EXPLOSIVES ARE TO BE USED FOR EXCAVATION ON THIS PROJECT, THE CONTRACTOR MUST:
 1) NOTIFY THE GAS COMPANY OF THE PROPOSED LOCATION OF EXCAVATION.
 2) TAKE PRECAUTION TO AVOID DAMAGE TO GAS COMPANY INSTALLATIONS.
 SEE PROVINCIAL REGULATION 140/92 FOR DETAILS

AECOM
 Certificate of Authorization
 AECOM Canada Ltd.
 No. 4671 Date: 12/03/16



BID OPPORTUNITY NO.1048-2011

AECOM REVIEW DRFT CHK

FILE NAME: 60224031-01-C-008-R0X.PDF Saved By: JZ

LOCATION APPROVED UNDERGROUND STRUCTURES

SUPR. U/G STRUCTURES COMMITTEE DATE

NOTE:
 LOCATION OF UNDERGROUND STRUCTURES AS SHOWN ARE BASED ON THE BEST INFORMATION AVAILABLE. BUT NO GUARANTEE IS GIVEN THAT ALL EXISTING UTILITIES ARE SHOWN OR THAT THE GIVEN LOCATIONS ARE EXACT. CONFIRMATION OF EXISTENCE AND EXACT LOCATION OF ALL SERVICES MUST BE OBTAINED FROM THE INDIVIDUAL UTILITIES BEFORE PROCEEDING WITH CONSTRUCTION.

Can-Net GPS Reference Station WINN/810

NO.	ISSUED FOR CONSTRUCTION	DATE	BY
0	ISSUED FOR CONSTRUCTION	12/02/11	JZ
	REVISIONS	YY/MM/DD	BY

AECOM

DESIGNED BY ALD
 CHECKED BY RL
 DRAWN BY JZ
 APPROVED BY *Raymond Lalonde*
 HOR. SCALE 1:500
 VERT. SCALE N/A
 DATE 12/02/11

PROFESSIONAL'S SEAL

CONSULTANT DRAWING NO. 60224031-01-C-008-R0X.mxd

THE CITY OF WINNIPEG WATER AND WASTE DEPARTMENT

2011 WASTE WATER SEWER RENEWALS
 BY CIPP LINING
 CONTRACT 20
 BELIVEAU ROAD
 198.3m W OF BEECHTREE CR (E LEG)
 TO 95.9m W OF BEECHTREE CR (E LEG)

SHEET 08 OF 112
 CITY DRAWING NUMBER 10003 REV 0