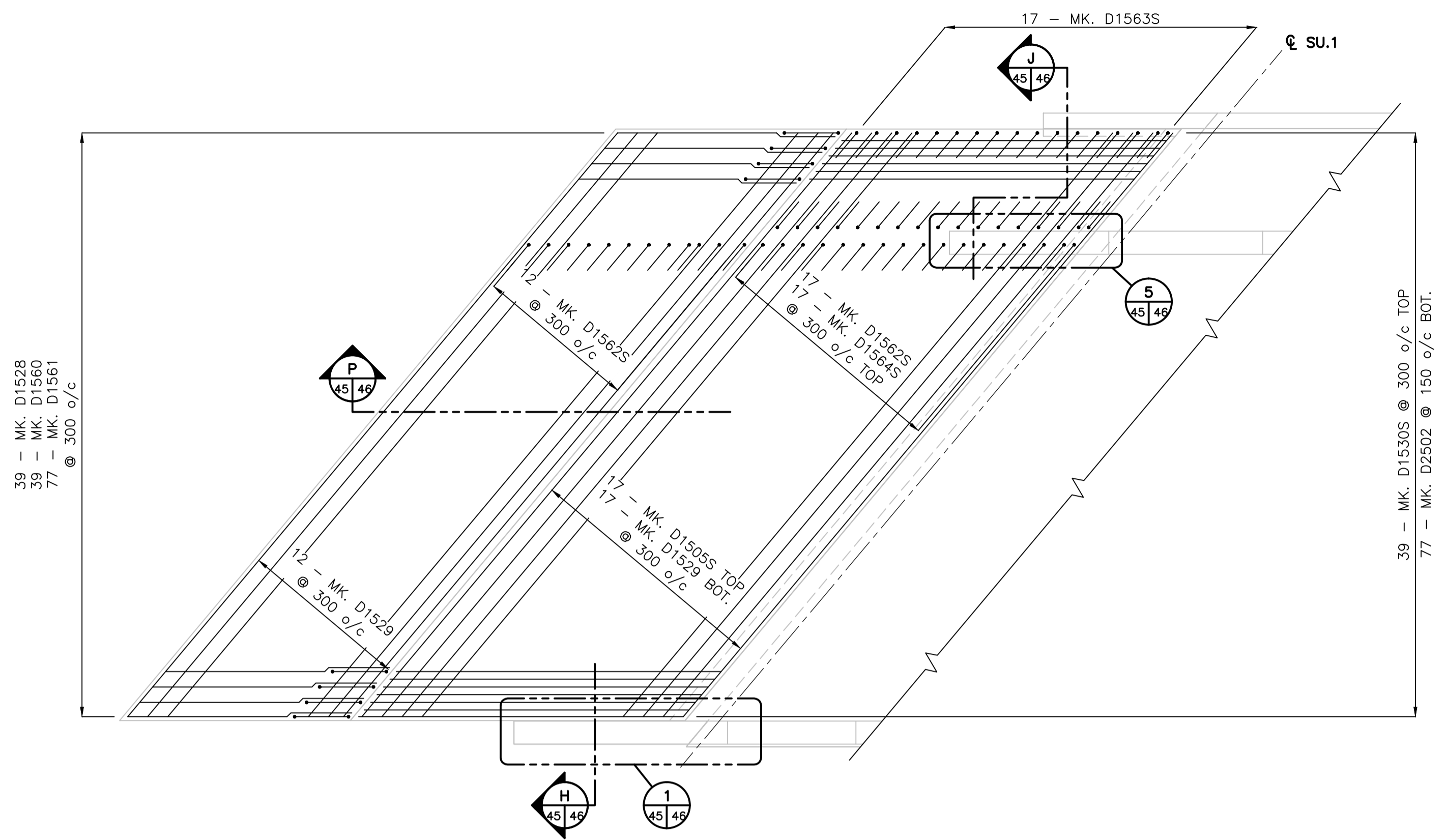
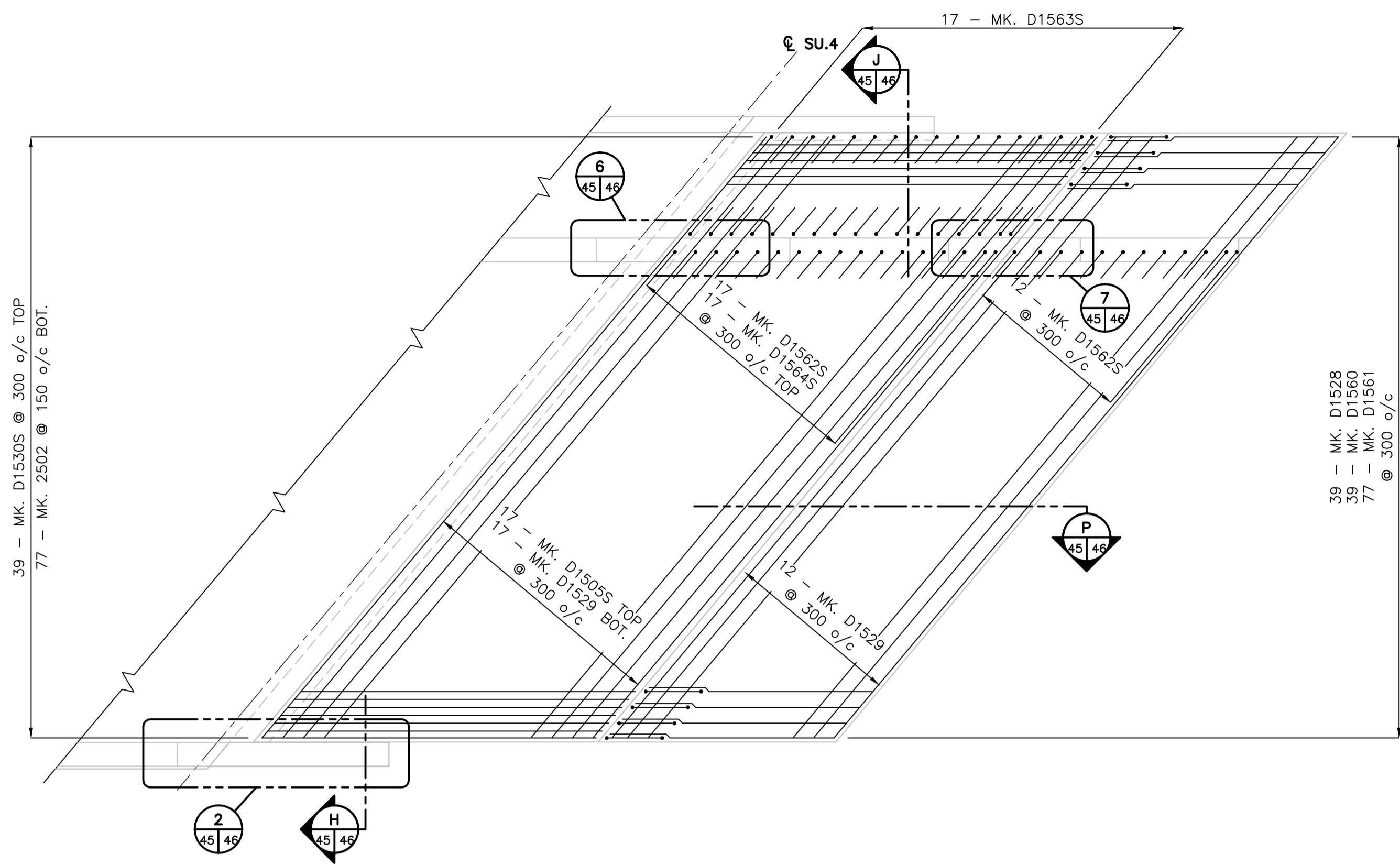


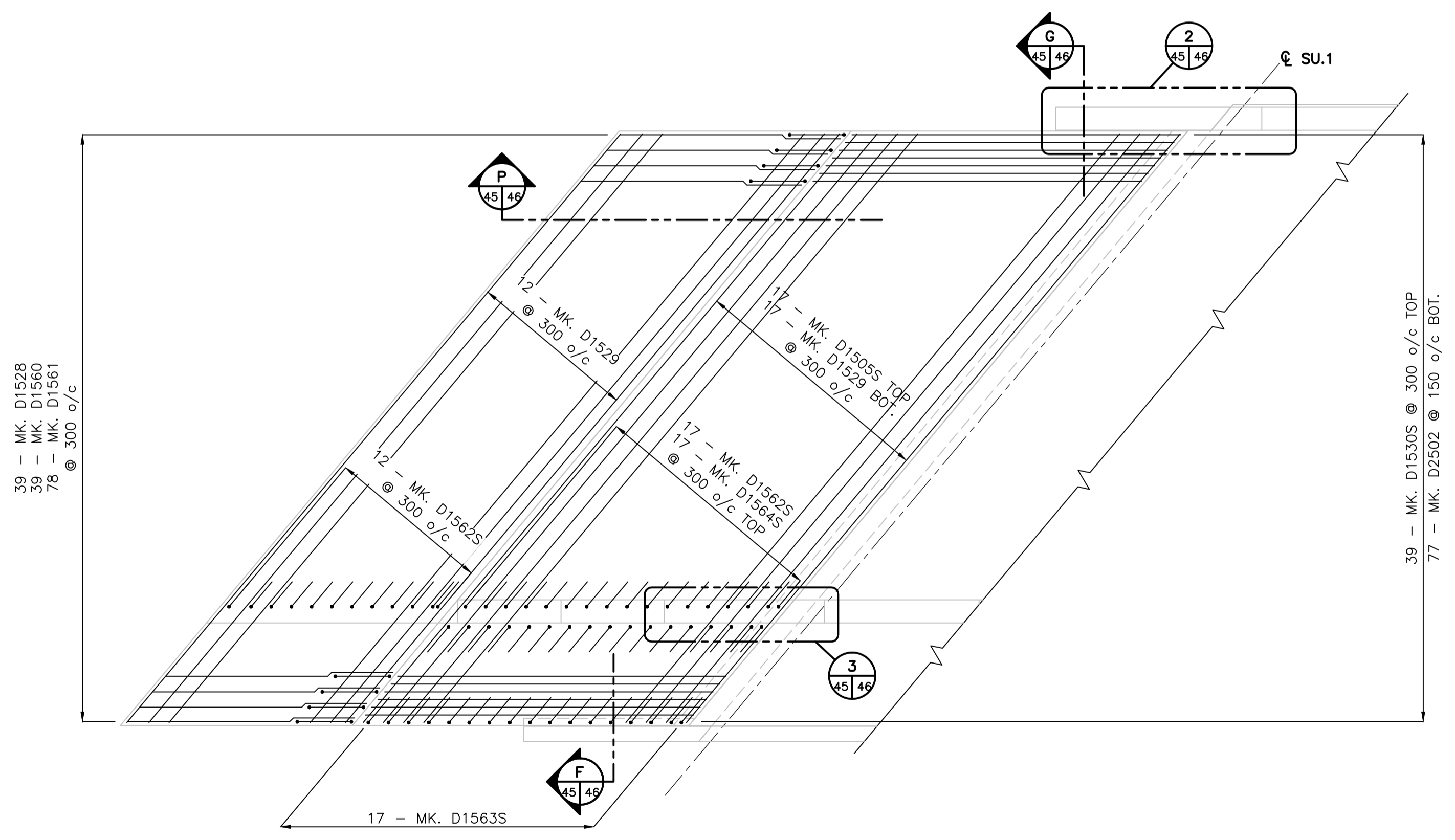
V:\1137\active\1137\1590\drawing\402_design\sheet_files\2011-11-12_tender_issue\31590s-605-767.dwg
 Date: 2011 Dec 20 4:07pm Login: Beerncoerts, James



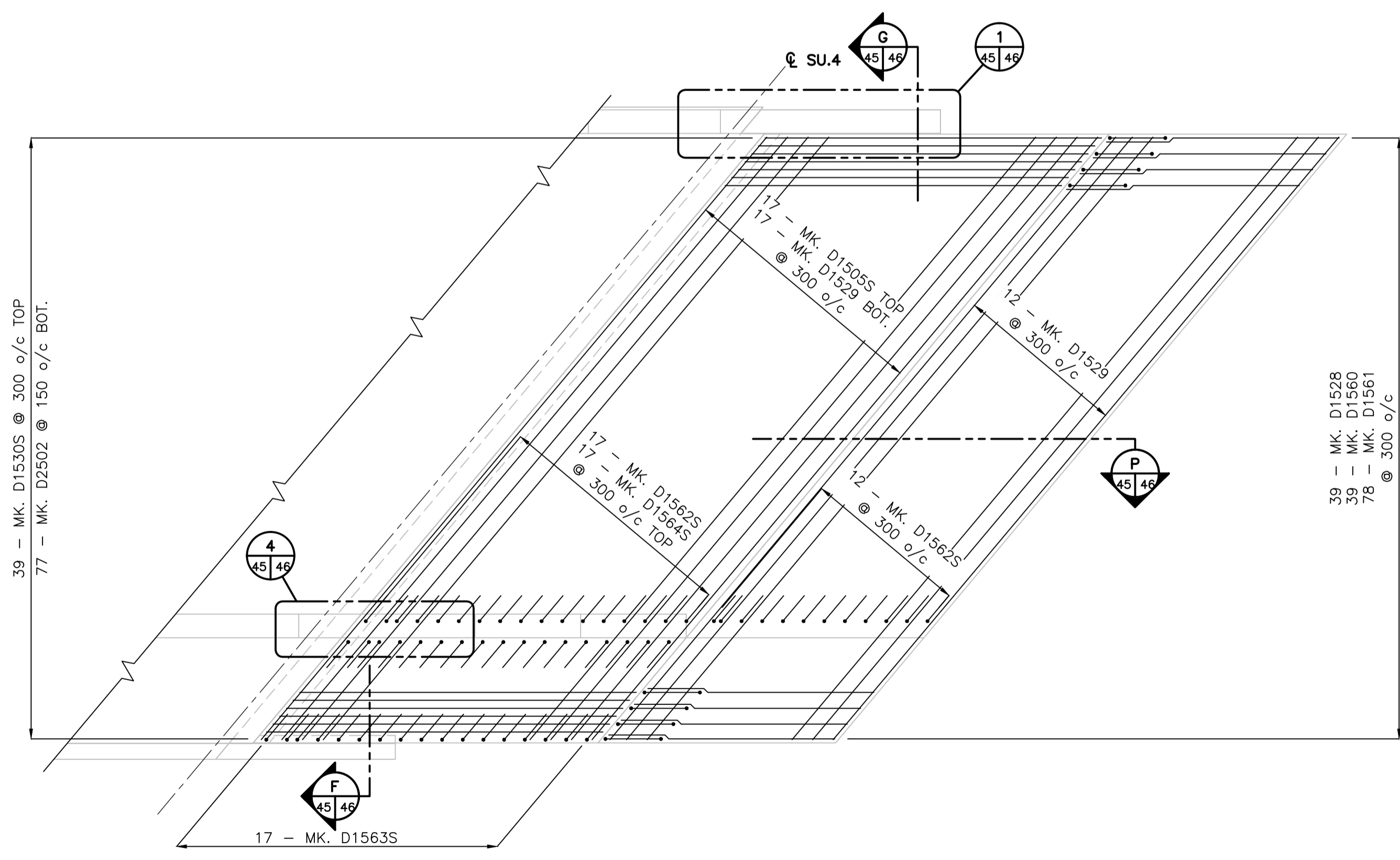
SOUTHBOUND SOUTH APPROACH SLAB PLAN



SOUTHBOUND NORTH APPROACH SLAB PLAN



NORTHBOUND SOUTH APPROACH SLAB PLAN



NORTHBOUND NORTH APPROACH SLAB PLAN

Certificate of Authorization
 Stantec Consulting Ltd.
 No. 1301 Date: _____

METRIC
 WHOLE NUMBERS INDICATE MILLIMETRES
 DECIMALIZED NUMBERS INDICATE METRES

LOCATION APPROVED UNDERGROUND STRUCTURES			
SUPV. U/G STRUCTURES COMMITTEE	DATE		
NOTE: LOCATION OF UNDERGROUND STRUCTURES AS SHOWN ARE BASED ON THE BEST INFORMATION AVAILABLE BUT NO GUARANTEE IS GIVEN THAT ALL EXISTING UTILITIES ARE SHOWN OR THAT THE GIVEN LOCATIONS ARE EXACT. CONFIRMATION OF EXISTENCE AND EXACT LOCATION OF ALL SERVICES MUST BE OBTAINED FROM THE INDIVIDUAL UTILITIES BEFORE PROCEEDING WITH CONSTRUCTION.			
NO.	ISSUED FOR TENDER	DATE	BY
0	ISSUED FOR TENDER	11.12.15	K.S.A.
	REVISIONS	DATE	BY

B.M. ELEV.	

Stantec Consulting Ltd.
 905 Waverley Street, Winnipeg, Manitoba
 Tel 204-489-5900 Fax 204-453-9012

DESIGNED BY: K.S.A.	CHECKED BY: K.S.A.
DRAWN BY: J.M.B.	APPROVED BY: B.J.W.
HOR. SCALE: 1:75	RELEASED FOR CONSTRUCTION: _____
VERTICAL: U.N.O.	DATE: DEC. 15, 2011

ENGINEER'S SEAL	
CONSULTANT DRAWING NO.	S-607

THE CITY OF WINNIPEG
 PUBLIC WORKS DEPARTMENT
 ENGINEERING DIVISION

STURGEON ROAD
 BRIDGE REPLACEMENT
 PORTAGE AVENUE TO HALLONQUIST DRIVE
 REINFORCING PLANS
 APPROACH & REINFORCED ROAD SLAB

SHEET	OF
45	82
CAD FILE DRAWING NUMBER 31590s-605-767.dwg	
CITY DRAWING NUMBER B120-12-045	