

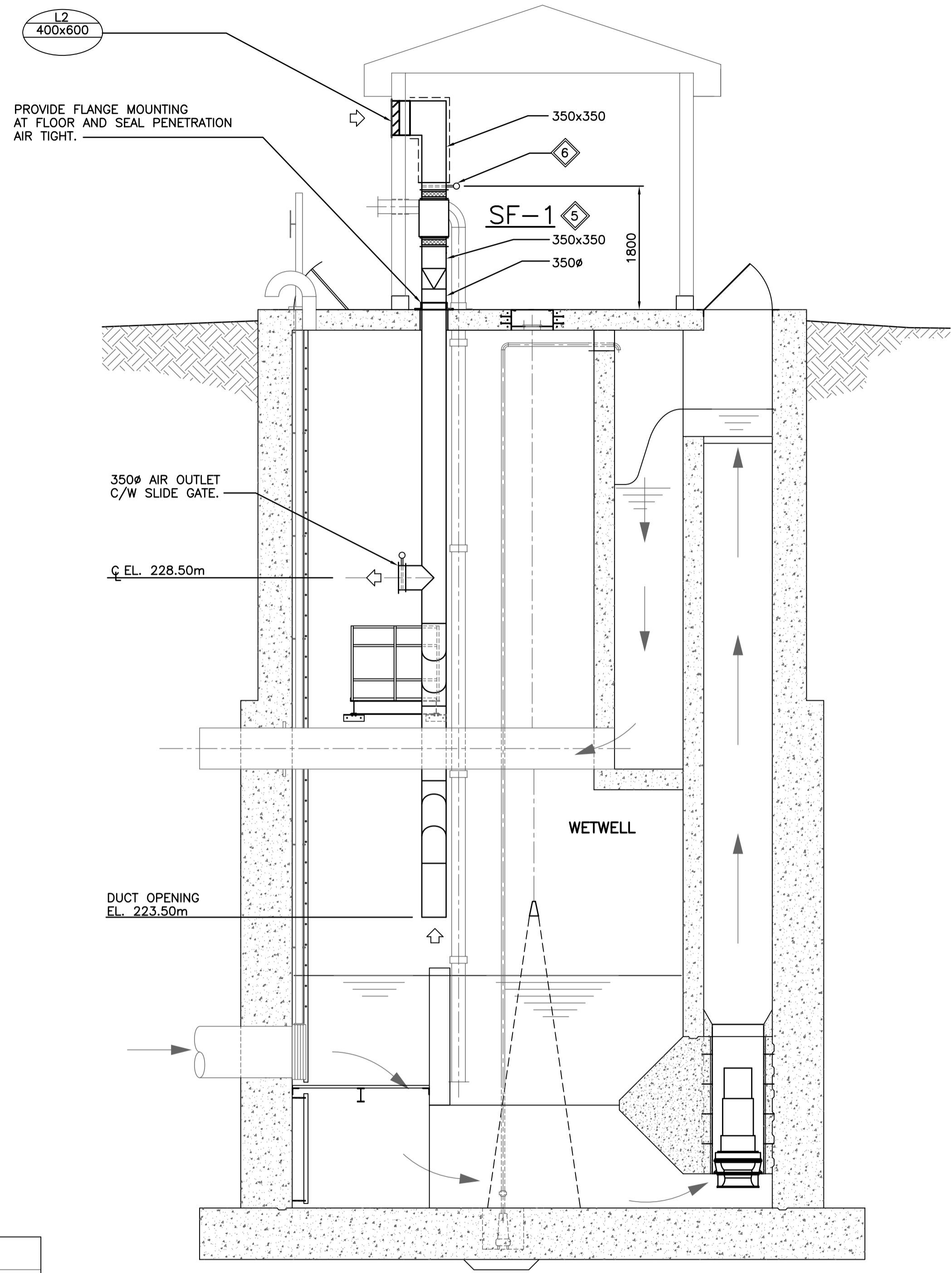
1 PLAN - ELECTRICAL RM. (EL. 232.70m)
SCALE: 1:50

GRILLE No.	E.H. PRICE	DESIGNATION	COMMENTS
G1	750x250/510/F/L/A/B12		LOUVERED RETURN GRILLE

LOUVRE No.	SIZE (WxH)	ACCEPTABLE MATERIAL
L1	300x400 (12"x16")	E.H.PRICE/DE439
L2	400x600 (16"x24")	E.H.PRICE/DE439

TAG No.	CAPACITY	E.S.P.	FRPM	VOLTAGE	MOTOR			ACCESSORIES	MAKE/MODEL
					HP	ENCL	RPM		
EF-1	94 L/s	62.5 Pa	1550	120/1/60	1/40	TEAO	1550	SPRING HANGING ISOLATORS AND BRACKETS	"GREENHECK"/SQ-70-G
SF-1	660 L/s	88 Pa	1725	120/1/60	1/4	ODP	1725	SPRING HANGING ISOLATORS AND BRACKETS	"GREENHECK"/SQ-100-A

TAG No.	CAPACITY	VOLTAGE	CONTROLS	ACCESSORIES	MAKE/MODEL
UH-1	5.0 kW	600/3/60	REMOTE SPACE THERMOSTAT	MOUNTING BRACKET AND SPACE THERMOSTAT	"CALORITECH"/GE058C



A ELEVATION
SCALE: 1:50

GENERAL NOTES:

- PERFORM WORK IN ACCORDANCE WITH ALL APPLICABLE CODES AND REGULATIONS.
- REVIEW EQUIPMENT LOCATIONS WITH CONTRACT ADMINISTRATOR PRIOR TO INSTALLATION.
- DUCT ROUTING INDICATED ON DRAWINGS ARE APPROXIMATE ONLY, CONFIRM IN FIELD, REROUTE DUCTING TO ELIMINATE FIELD INTERFERENCES WITH BUILDING STRUCTURES, ELECTRICAL ETC. CONFIRM CHANGES WITH CONTRACT ADMINISTRATOR.
- CONFORM TO SMACNA STANDARDS FOR SUPPLY AND INSTALLATION OF DUCTWORK.

KEY NOTES:

- INSTALL NEW EXHAUST FAN EF-1 AS INDICATED. PROVIDE SPRING VIBRATION ISOLATORS AND FLEXIBLE DUCT CONNECTIONS.
- INSTALL NEW UNIT HEATERS UH-1 AS SHOWN. PROVIDE MOUNTING BRACKETS AND CONTROL WIRING (TYP).
- PROVIDE AIR INTAKE AND EXHAUST LOUVERES AS SHOWN (TYP).
- PROVIDE A 25mm THICK INSULATED GALVANIZED STEEL COVERED SLIDING CLOSURE PANEL WITH GASKETTING ON FACE TO SEAL PANEL AGAINST LOUVER FRAME. PROVIDE SLIDING SYSTEM TO SUIT. PROVIDE HANDLES FOR OPENING OF AND CLOSING PANEL. PROVIDE PANEL AND SLIDING SYSTEM SHOP DRAWING FOR REVIEW BEFORE FABRICATION.
- INSTALL NEW SUPPLY FAN SF-1 AS INDICATED. PROVIDE SPRING VIBRATION ISOLATORS AND FLEXIBLE CONNECTIONS. (PROVIDE LAMACOID SIGN ABOVE FAN ON/OFF SWITCH TO READ AS FOLLOWS: "OPEN AIR INTAKE SLIDE GATE BEFORE STARTING FAN.")
- PROVIDE A 25mm THICK INSULATED GALVANIZED STEEL COVERED SLIDING CLOSURE PANEL WITH GASKETTING ON FACES.

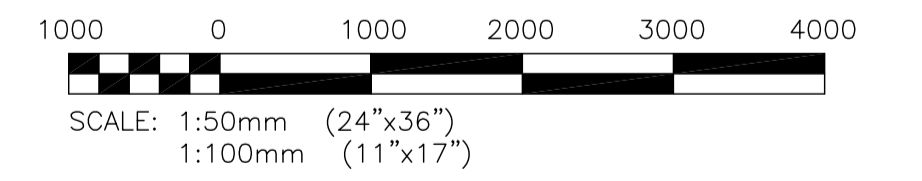
VENTILATION SYSTEM SEQUENCE OF OPERATION:

THE EXHAUST FAN EF-1 SHALL BE CONTROLLED BY A MANUAL ON/OFF SWITCH, AND A SPACE MOUNTED COOLING THERMOSTAT, AS FOLLOWS:

- EXHAUST FAN EF-1 SHALL OPERATE WHEN MANUAL OVERRIDE SWITCH IS ON.
- WHEN MANUAL OVERRIDE SWITCH IS OFF, OPERATION OF EF-1 SHALL REFER TO AUTO MODE.
- WHEN IN AUTO MODE EXHAUST FAN EF-1 SHALL OPERATE WHENEVER SPACE TEMPERATURE RISES ABOVE SET POINT.
- REFER TO ELECTRICAL FOR CONTROLS DESIGN.

LEGEND:

- NEW EQUIPMENT OR DUCTWORK
- EXTERNALLY INSULATED DUCTWORK
- THERMOSTAT
- BACKDRAFT DAMPER C/W ACCESS DOOR
- GRILLE NO. 750x250 378 L/s
- LOUVRE NO. 600x600 SIZE
- EF- EXHAUST FAN
- UH- UNIT HEATER
- CONTROL WIRING



METRIC
WHOLE NUMBERS INDICATE MILLIMETRES
DECIMALIZED NUMBERS INDICATE METRES



LOCATION APPROVED UNDERGROUND STRUCTURES ORIGINAL SIGNED BY DERRICK SAEDAL. SUPV. U/G STRUCTURES COMMITTEE DATE	B.M. ELEV. BM ELEV.	DESIGNED BY PSS DRAWN BY JHH CHECKED BY ORIGINAL SIGNED BY R.E. DERKSEN. APPROVED BY ORIGINAL SIGNED BY P.S. SILVA.	KGS GROUP CONSULTING ENGINEERS	ENGINEER'S SEAL P.S. SILVA Member 21131 REGISTERED PROFESSIONAL ENGINEER	THE CITY OF WINNIPEG TRANSIT DEPARTMENT
NOTE: LOCATION OF UNDERGROUND STRUCTURES AS SHOWN ARE BASED ON THE BEST INFORMATION AVAILABLE BUT NO GUARANTEE IS GIVEN THAT ALL EXISTING UTILITIES ARE SHOWN OR THAT THE GIVEN LOCATIONS ARE EXACT. CONFIRMATION OF EXISTENCE AND EXACT LOCATION OF ALL SERVICES MUST BE OBTAINED FROM THE INDIVIDUAL UTILITIES BEFORE PROCEEDING WITH CONSTRUCTION.	0 ISSUED FOR TENDER. 25/03/09 PSS NO. REVISIONS DATE BY	HOR. SCALE VERTICAL 08/11/07	RELEASED FOR CONSTRUCTION ORIGINAL SIGNED BY RANDY FINGAS.	CONSULTANT PROJECT NO. 08-0163-02	SOUTHWEST RAPID TRANSIT CORRIDOR - STAGE 1 LAND DRAINAGE PUMPING STATION & ASSOCIATED WORKS MECHANICAL HEATING AND VENTILATION
				CITY DRAWING NUMBER LD-5324 SHEET 25 OF 25 CONSULTANT DRAWING NUMBER C2-B2301-T	

P:\Projects\2008\08-0163-02\Doc.Control\Issues\Source\Drawings\2009-03-27_Issued to Met. Mgmt. (Elec. Structures)\96-2009_Drawing_LD-5324-R0.dwg