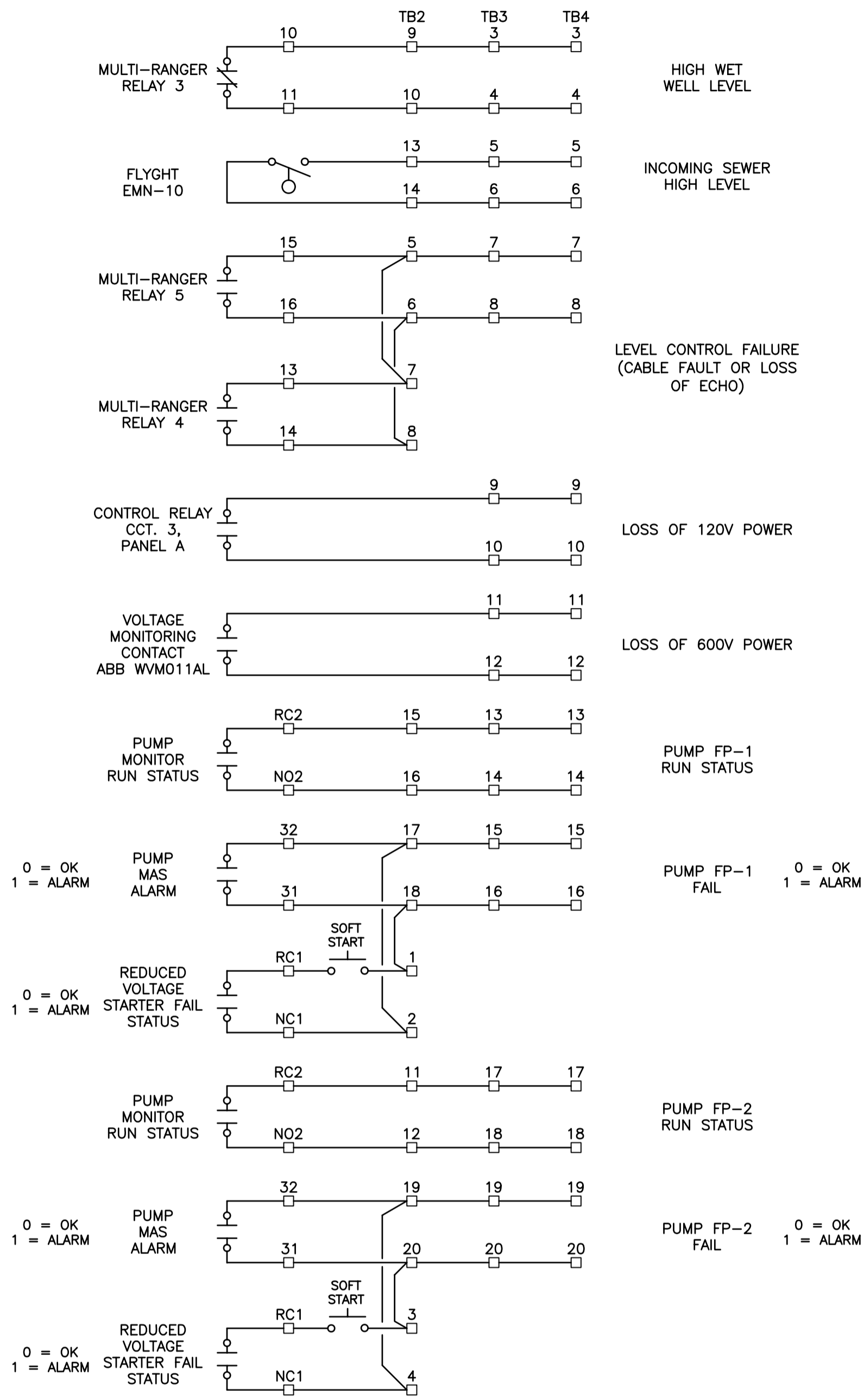
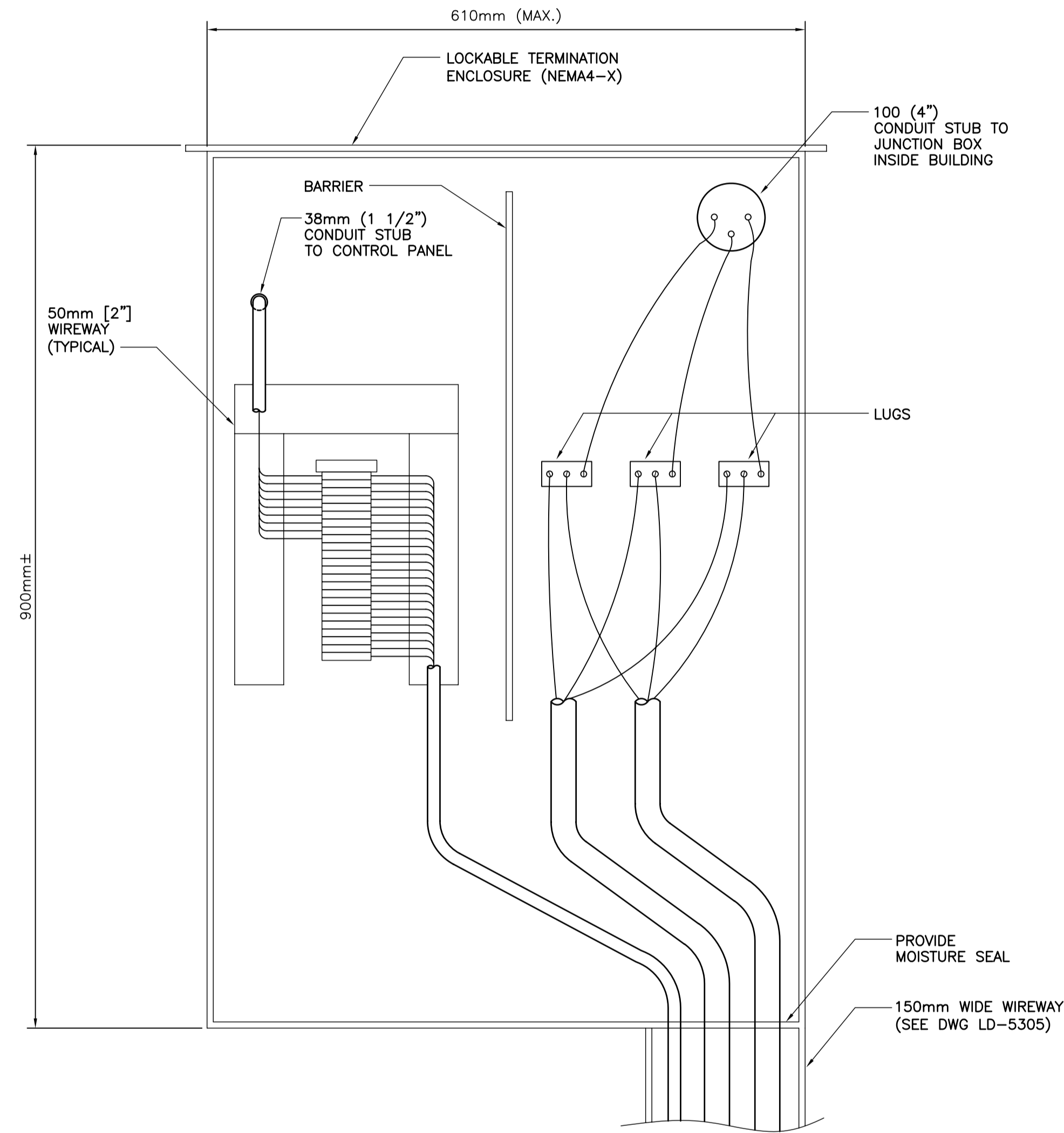


- LEGEND:**
- ( ) CONDUCTOR IDENTIFICATION
  - STARTER TERMINALS
  - ▣ UC TERMINALS
  - ▣ DEVICE TERMINALS
  - UC UNIT CONTROLLER
  - L LOCAL OPERATOR CONTROLS
  - FIELD WIRING
  - PANEL WIRING
  - WIRE CONNECTION

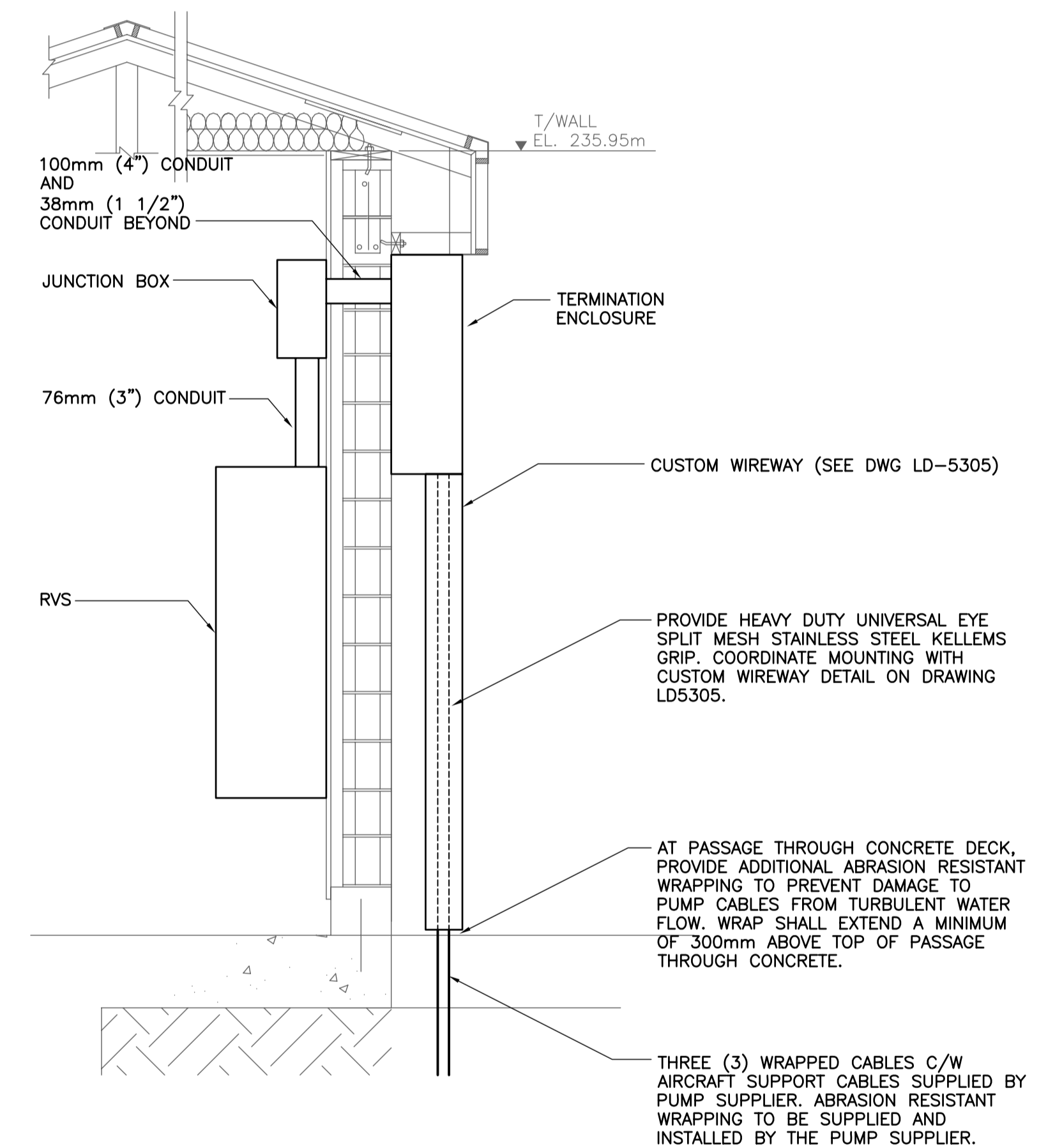
- NOTES:**
- 



**A** CONTROL ELEMENTARY DIAGRAM  
SCALE: N.T.S.



**B** TERMINATION ENCLOSURE DETAIL  
SCALE: N.T.S.



**C** SECTION DETAIL  
SCALE: N.T.S.

P:\Projects\2008\08-0163-02\Doc.Control\Issued\SOURCE\dwgs\2009-03-27\_Issued to Mat Mgmt (Elec. Signatures)\96-2009\_Drawing\_LD-5321-R0.dwg



LOCATION APPROVED UNDERGROUND STRUCTURES ORIGINAL SIGNED BY DERRICK SAEDAL. SUPPLY U/G STRUCTURES COMMITTEE DATE

NOTE: LOCATION OF UNDERGROUND STRUCTURES AS SHOWN ARE BASED ON THE BEST INFORMATION AVAILABLE BUT NO GUARANTEE IS GIVEN THAT ALL EXISTING UTILITIES ARE SHOWN OR THAT THE GIVEN LOCATIONS ARE EXACT. CONFIRMATION OF EXISTENCE AND EXACT LOCATION OF ALL SERVICES MUST BE OBTAINED FROM THE INDIVIDUAL UTILITIES BEFORE PROCEEDING WITH CONSTRUCTION.

B.M. ELEV.	BM ELEV.	DESIGNED BY	JLL
		DRAWN BY	GCN
		CHECKED BY	ORIGINAL SIGNED BY R.E. WILLMS
		APPROVED BY	ORIGINAL SIGNED BY J.L. LALONDE
		HOR. SCALE	
		VERTICAL	
0		ISSUED FOR TENDER	25/03/09 JLL
NO.	REVISIONS	DATE	BY
		08/11/07	

RELEASED FOR CONSTRUCTION ORIGINAL SIGNED BY RANDY FINGAS DATE



**THE CITY OF WINNIPEG TRANSIT DEPARTMENT**

SOUTHWEST RAPID TRANSIT CORRIDOR - STAGE 1 LAND DRAINAGE PUMPING STATION & ASSOCIATED WORKS

ELECTRICAL FLOOD PUMPING STATION MISCELLANEOUS DETAILS

CITY DRAWING NUMBER LD-5321 SHEET 22 OF 25 CONSULTANT DRAWING NUMBER C2-B2205-T

CONSULTANT PROJECT NO. 08-0163-02