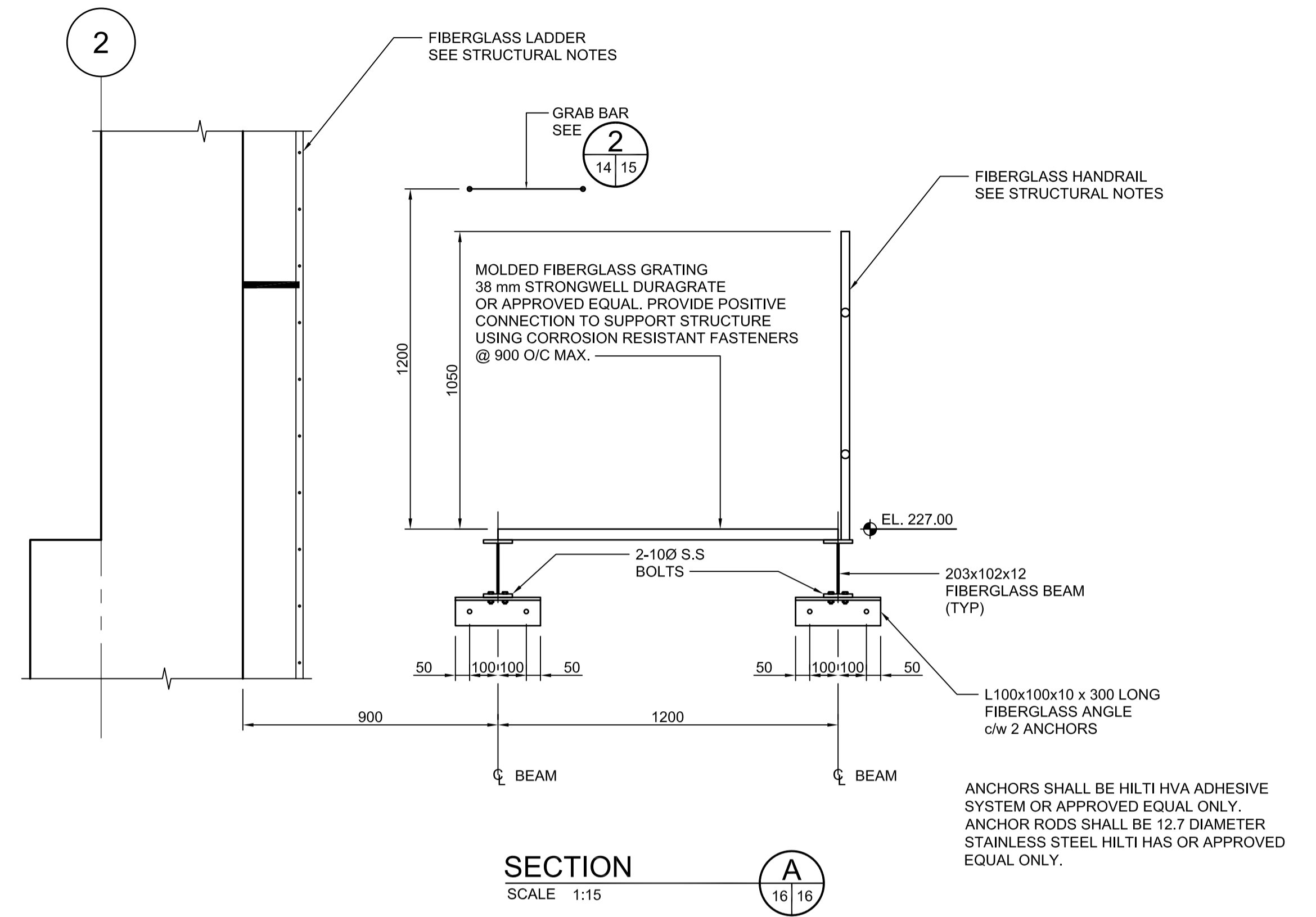
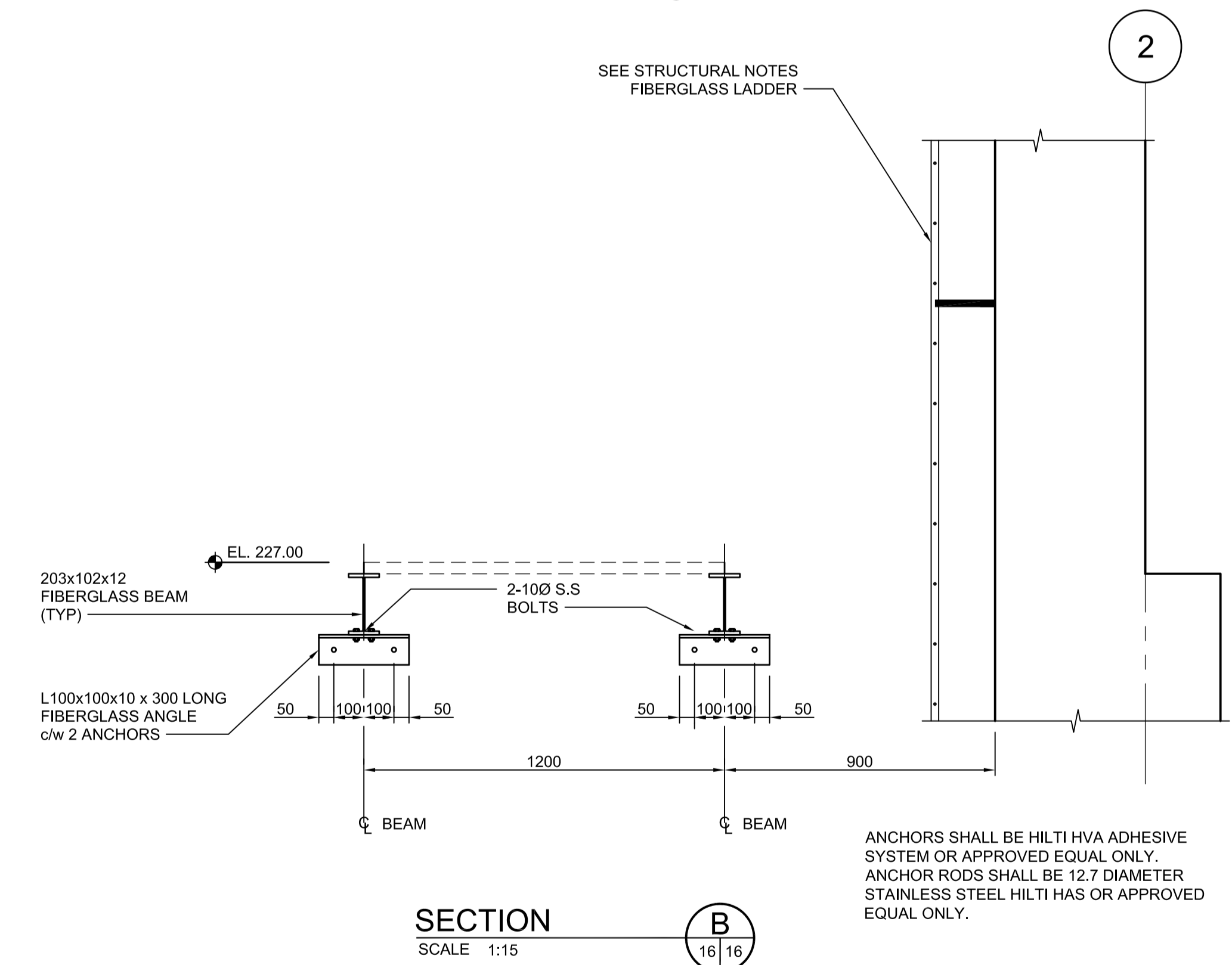


**SAFETY LANDING FRAMING PLAN**  
SCALE 1:15



**SECTION A-A**  
SCALE 1:15

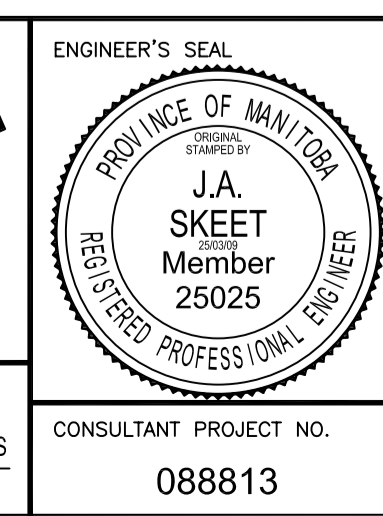
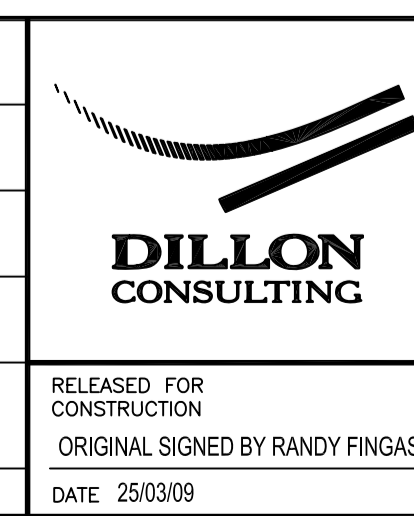


**SECTION B-B**  
SCALE 1:15



LOCATION APPROVED UNDERGROUND STRUCTURES	B.M. ELEV.	DESIGNED BY KGW
ORIGINAL SIGNED BY DERRICK SAEDEL 25/03/09		DRAWN BY RCB
SUPV. U/G STRUCTURES COMMITTEE DATE		CHECKED BY ORIGINAL SIGNED BY JAMES SKEET
		APPROVED BY ORIGINAL SIGNED BY NORM ULYATT
		HOR. SCALE AS SHOWN
		VERTICAL AS SHOWN
0 ISSUED FOR TENDER 25/03/09 RCB		RELEASED FOR CONSTRUCTION ORIGINAL SIGNED BY RANDY FINGAS DATE 25/03/09
NO. REVISIONS	DATE	BY DATE 01-01-09

ENGINEER'S SEAL	CONSULTANT PROJECT NO.
J.A. SKEET Member 25025	088813



**THE CITY OF WINNIPEG TRANSIT DEPARTMENT**

SOUTHWEST RAPID TRANSIT CORRIDOR - STAGE 1  
LAND DRAINAGE PUMPING STATION & ASSOCIATED WORKS

MISCELLANEOUS DETAILS SHEET 2

CITY DRAWING NUMBER LD-5315  
SHEET 16 OF 25

C2-B2109-T