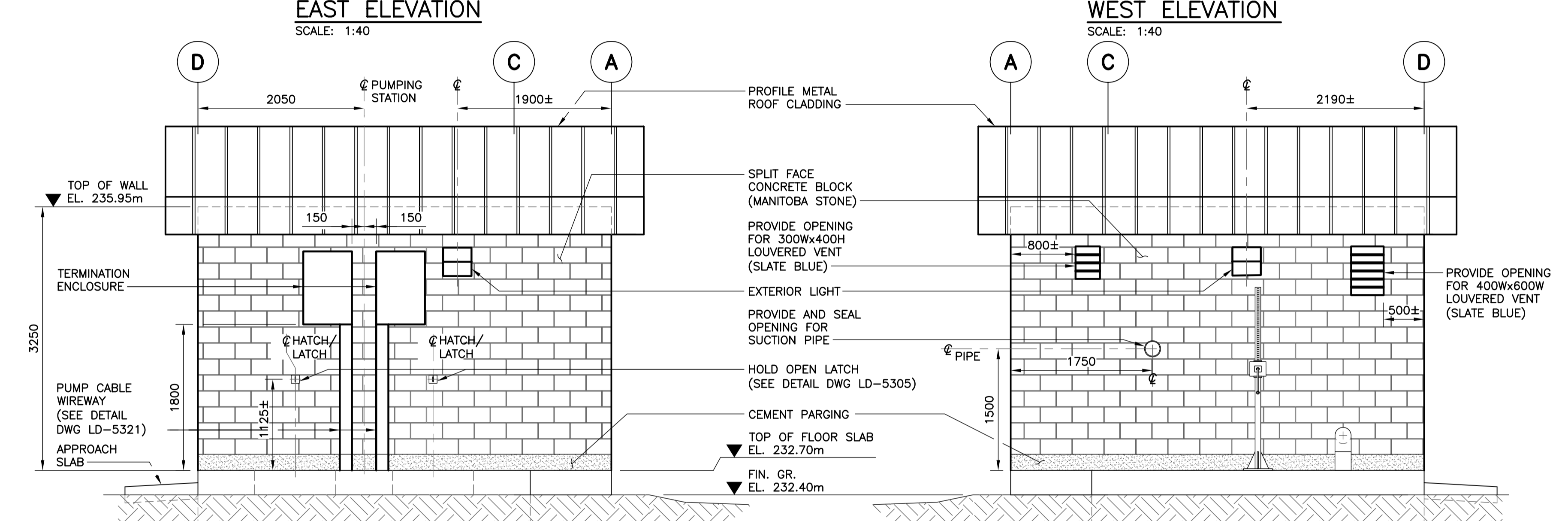
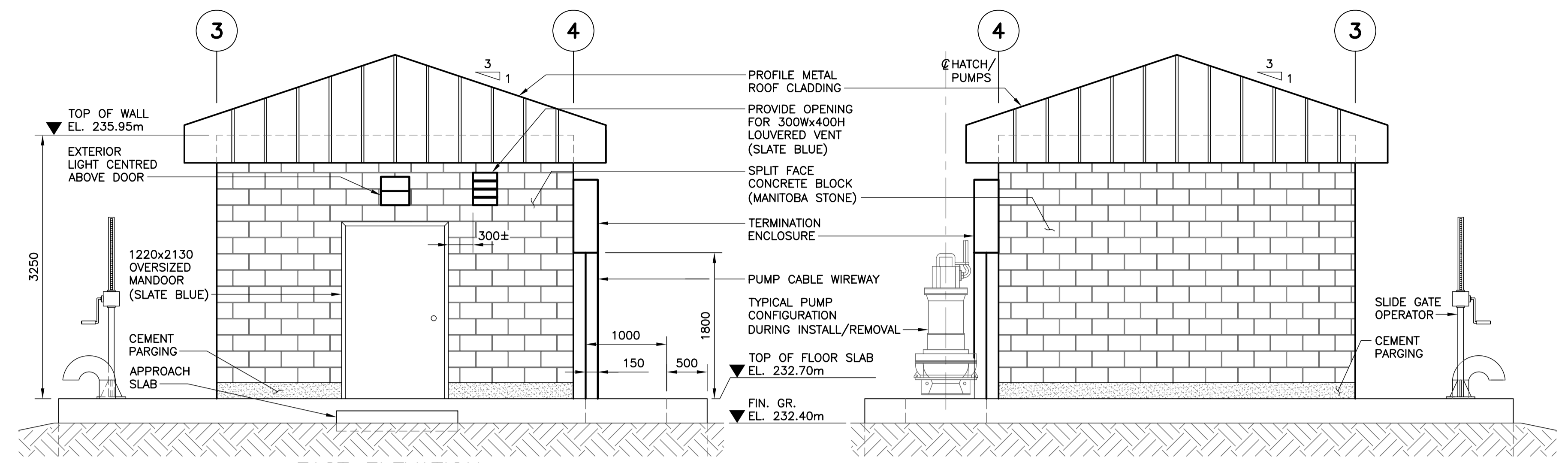


1 PLAN - ELECTRICAL RM. (EL. 232.70m)  
SCALE: 1:40

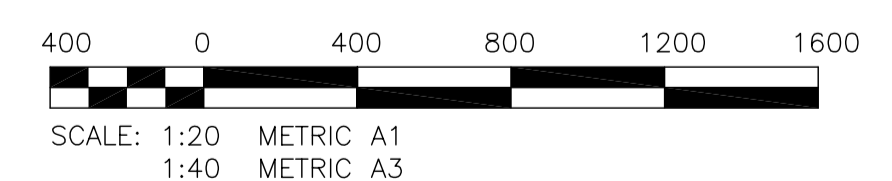


- 1.0 GENERAL NOTES**
- NOTES TO BE READ IN CONJUNCTION WITH THE SPECIFICATIONS.
  - DO NOT SCALE DRAWINGS.
  - VERIFY ALL DIMENSIONS, ELEVATIONS AND SCOPE OF WORK PRIOR TO CONSTRUCTION.
- 2.0 MASONRY**
- CONSTRUCTION OF PLAIN AND REINFORCED CONCRETE BLOCK SHALL BE IN ACCORDANCE WITH CSA CAN3-A371-LATEST EDITION.
  - NORMAL WEIGHT HOLLOW LOAD BEARING UNITS SHALL BE H/15/A/M CONFORMING TO CSA CAN3-165.1-LATEST EDITION.
  - MASONRY MORTAR SHALL BE TYPE 'S' CONFORMING TO CSA A179-M1976.
  - MASONRY GROUT SHALL BE NORMAL PORTLAND CEMENT AND MEET THE FOLLOWING REQUIREMENTS:  
 - MIN. 28 DAY COMP. STRENGTH ..... 20 MPa  
 - SLUMP..... 125 (±25mm)  
 - AIR..... 1-3%
  - VERTICAL REINFORCEMENT SHALL BE BILLET STEEL GRADE 400, DEFORMED BARS.
  - MASONRY CONSTRUCTION SHALL INCLUDE THE FOLLOWING:  
 - LINTEL BEAMS ABOVE ALL DOOR OPENINGS. LINTEL BEAMS SHALL EXTEND 200 PAST EACH SIDE OF OPENING.  
 - 1-15M DOWEL AND 1-15M VERT. GROUTED AT EACH SIDE OF DOORS, OPENINGS, BUILDING CORNERS, WALL INTERSECTIONS, AT BOTH SIDES OF CONTROL JOINTS AND AT MAXIMUM 800 O.C. IN WALLS.

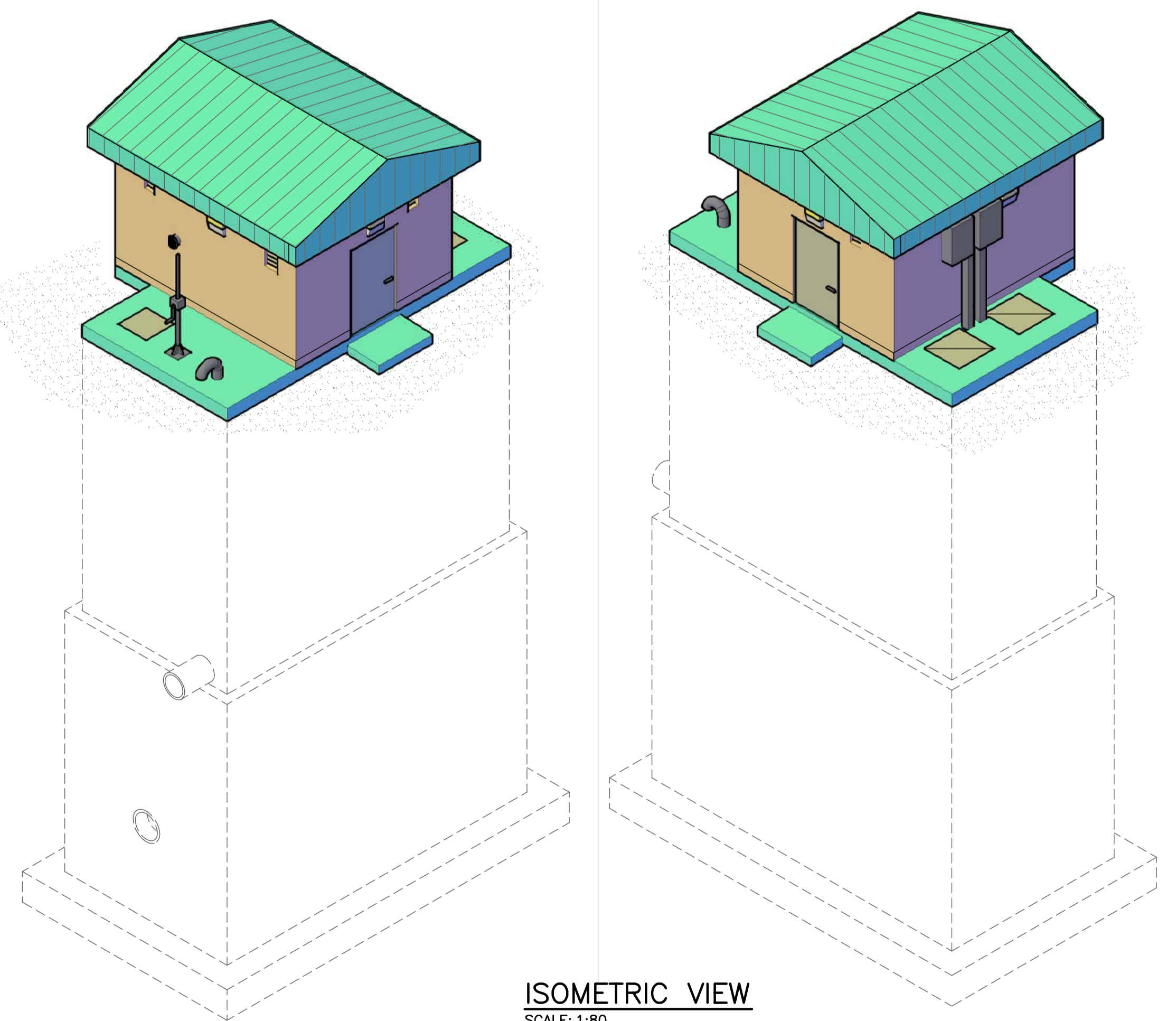
- 3.0 ANCHORS**
- ADHESIVE ANCHORS TO BE HILTI HY150 HAS RODS C/W STANDARD EMBEDMENT U.N.O.
  - EXPANSION ANHORS TO BE 304 STAINLESS STEEL HEX HEAD POWER-BOLTS C/W NYLON COMPRESSION RING AND STANDARD EMBEDMENT U.N.O. (BY POWER FASTENERS).
- 4.0 ALUMINUM**
- ALUMINUM: TO CAN/CSA S517 AND THE ALUMINUM ASSOCIATION 'SPECIFICATIONS FOR ALUMINUM STRUCTURES'. ALUMINUM FOR PLATES AND EXTRUDED SHAPES SHALL BE TYPE 6061-T651.
  - ALUMINUM WELDING SHALL BE IN ACCORDANCE WITH CSA W59.2-03 BY WELDERS CERTIFIED AND QUALIFIED IN ACCORDANCE WITH CSA W47.2-2003. ALL WELDS TO BE 6mm UNLESS NOTED OTHERWISE.
  - ALUMINUM TO BE ANODIZED AFTER FABRICATION.
  - INSTALL NYLTITE ELECTROCHEMICAL ISOLATION GASKETS TO ELECTRICALLY ISOLATE DISSIMILAR METALS (SUPPLIED BY SPAENAUR).
  - ALL ALUMINUM IN CONTACT WITH CONCRETE OR CAST INTO CONCRETE TO HAVE BITUMINOUS ISOLATION COATING.
  - ALL NUTS, BOLTS AND ANCHORS SHALL CONFORM TO ASTM A276 TYPE 316 STAINLESS STEEL.

**BUILDING CODE SUMMARY:**

BUILDING CLASSIFICATION:	GROUP F3 LOW HAZARD INDUSTRIAL OCCUPANCY
BUILDING AREA:	22.4 SQUARE METRES
OCCUPANT LOAD:	0 PERSONS (INTERMITTENTLY OCCUPIED BY SERVICE PERSONEL ONLY)
FIRE RATING:	NONE REQUIRED (NBC TABLE 9.10.14.5)
EXITS:	ONE EXIT PERMITTED (NBC 9.9.7.4)
<b>DESIGN LOADS:</b>	
LIVELOADS:	STAIRS - 4.8 KPa HATCHES - 3.6 KPa FLOORS - 4.8 KPa
ROOF LOADS:	SNOW - 1.7 KPa
WIND LOADS:	q(1 IN 30) - 0.42 KPa



**METRIC**  
WHOLE NUMBERS INDICATE MILLIMETRES  
DECIMALIZED NUMBERS INDICATE METRES



ISOMETRIC VIEW  
SCALE: 1:80



LOCATION APPROVED UNDERGROUND STRUCTURES ORIGINAL SIGNED BY DERRICK SAEDAL. SUPV. U/C STRUCTURES COMMITTEE DATE	B.M. ELEV.    B.M. ELEV.	DESIGNED: CMS DRAWN: FV CHECKED: ORIGINAL SIGNED BY T. FROELICH. APPROVED: ORIGINAL SIGNED BY C. M. SIEPMAN.	<b>KGS GROUP</b> CONSULTING ENGINEERS	ENGINEER'S SEAL 	<b>THE CITY OF WINNIPEG</b> TRANSIT DEPARTMENT
NOTE: LOCATION OF UNDERGROUND STRUCTURES AS SHOWN ARE BASED ON THE BEST INFORMATION AVAILABLE. BUT NO GUARANTEE IS GIVEN THAT ALL EXISTING UTILITIES ARE SHOWN OR THAT THE GIVEN LOCATIONS ARE EXACT. CONFIRMATION OF EXISTENCE AND EXACT LOCATION OF ALL SERVICES MUST BE OBTAINED FROM THE INDIVIDUAL UTILITIES BEFORE PROCEEDING WITH CONSTRUCTION.	0 ISSUED FOR TENDER    25/03/09    CMS NO. REVISIONS    DATE    BY	HOR. SCALE: AS NOTED VERTICAL: 09/01/15	RELEASED FOR CONSTRUCTION ORIGINAL SIGNED BY RANDY FINGAS.	CONSULTANT PROJECT NO. 08-0163-05	SOUTHWEST RAPID TRANSIT CORRIDOR - STAGE 1 LAND DRAINAGE PUMPING STATION & ASSOCIATED WORKS
				CITY DRAWING NUMBER: LD-5304 SHEET 05 OF 25	BUILDING FLOOR PLAN & ELEVATIONS CONSULTANT DRAWING NUMBER: C2-B2000-P

P:\Projects\2008\08-0163-05\Doc\Control\Issue\Source\Drawings\2009-03-30\_Issued to Met Mgmt\96-2009-Drawing\_LD-5304-R0.dwg