

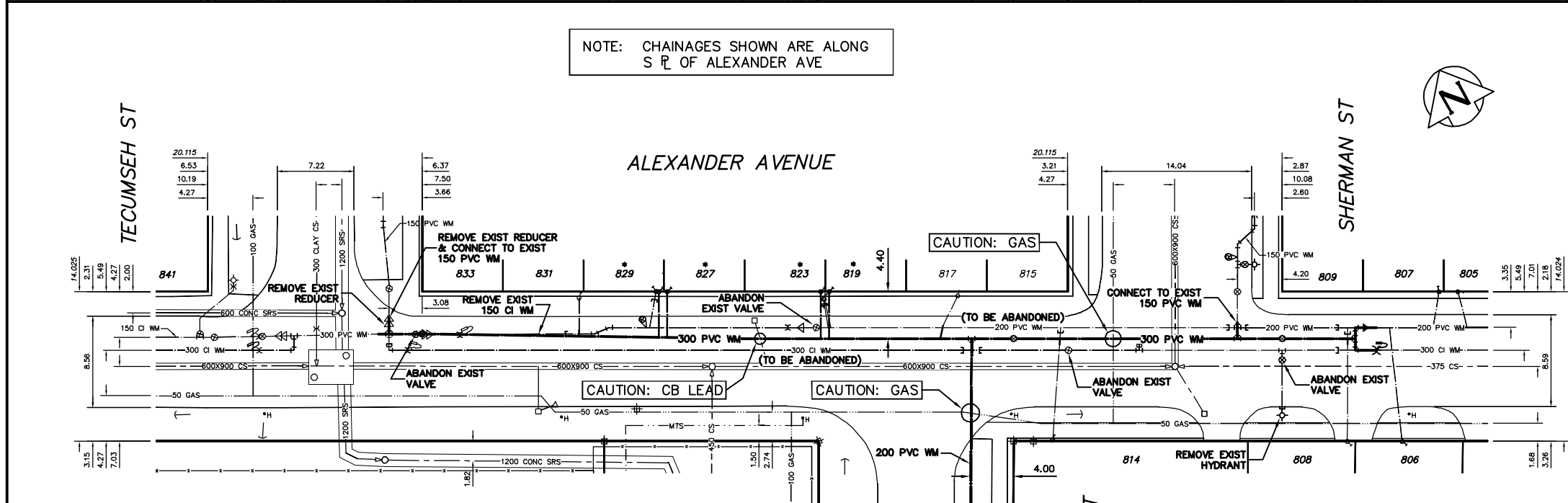
- CONSTRUCTION NOTES**
1. EXPOSE EXISTING WATERMAIN & CONFIRM INVERTS PRIOR TO CONSTRUCTION.
 2. CONFIRM LOCATION OF ALL SERVICES IN THE FIELD.
 3. INSTALL WATERMAIN BY TRENCHLESS METHODS.
 4. TRENCHES AND EXCAVATIONS WITHIN 1 METRE OF A PAVED AREA INCLUDING SIDEWALKS SHALL BE CLASS 3 BACKFILL.
 5. ALL MATERIALS SHALL CONFORM TO THE CITY OF WINNIPEG STANDARD CONSTRUCTION SPECIFICATIONS.
 6. MINIMUM COVER TO TOP OF WATERMAIN SHALL BE 2.4 m.
 7. REPLACE ALL EXISTING LEAD SERVICES FROM PROPOSED WATERMAIN TO E.
 8. NOTIFY ALL AFFECTED RESIDENTS AND BUSINESSES 24 HOURS IN ADVANCE OF ANY WATER SHUTDOWNS OR DISRUPTION OF SERVICE.

NOTE: CHAINAGES SHOWN ARE ALONG S R L OF ALEXANDER AVE

WATER SERVICE INFORMATION

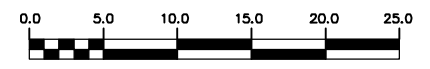
ADDRESS	SIZE(mm) & TYPE (STREET)	SIZE(mm) & TYPE (PROP)	SHORT & LONG MEASUREMENT	CORP. LOCATION	REMARKS
808 ALEXANDER AVE RESIDENTIAL	20 COPPER LEAD	12	2.25 WEL HSE 31.29 EEL TECUMSEH	OPP S/C	RECONNECT SERVICE
814 ALEXANDER AVE RESIDENTIAL	20 COPPER	20	1.29 EWL HSE 3.66 EEL TECUMSEH	0.7 E OF S/C	RECONNECT SERVICE
818 ALEXANDER AVE RESIDENTIAL	12 LEAD	12	9.17 NSL HSE 10.67>NNL ALEXANDER	OPP S/C	SERV. OFF SHERMAN
817 ALEXANDER AVE RESIDENTIAL	20 COPPER LEAD	12	2.20 WEL HSE 5.29 WEL TECUMSEH	1.5 W OF S/C	RECONNECT SERVICE
819 ALEXANDER AVE RESIDENTIAL	16 COPPER LEAD	12	0.30 WML HSE 0.65 EWL TECUMSEH	0.6 E OF S/C	RENEW TO R WITH 20 COPPER
823 ALEXANDER AVE RESIDENTIAL	16 COPPER LEAD	20	0.50 EEL HSE 0.44 EWL TECUMSEH	0.5 E OF S/C	RENEW TO R WITH 20 COPPER
827 ALEXANDER AVE RESIDENTIAL	20 COPPER LEAD	12	1.11 WML HSE 15.23 WML TECUMSEH	0.6 W OF S/C	DBL. SERV. W/829
829 ALEXANDER AVE RESIDENTIAL	20 COPPER LEAD	12	OPP EL HSE 15.23 WML TECUMSEH	0.6 W OF S/C	RENEW TO R WITH 20 COPPER
831 ALEXANDER AVE RESIDENTIAL	20 COPPER LEAD	12	14.73 EEL TECUMSEH	OPP S/C	RECONNECT SERVICE
833 ALEXANDER AVE RESIDENTIAL	20 COPPER LEAD	12	10.41 NSL HSE 10.65>NNL ALEXANDER	0.6 N OF S/C	SERV. OF TECUMSEH

* SERVICES TO BE RENEWED TO R UPON CONFIRMATION BY THE CONTRACTOR OF EXISTING 1/2" COPPER OR LEAD SERVICE. OBTAIN APPROVAL FROM CONTRACT ADMINISTRATOR PRIOR TO RENEWAL.



METRIC
WHOLE NUMBERS INDICATE MILLIMETRES
DECIMALIZED NUMBERS INDICATE METRES
NOTE: ALL VALVES TO BE INSTALLED COUNTERCLOCKWISE TO CLOSE

WARNING
IF POWER EQUIPMENT OR EXPLOSIVES ARE TO BE USED FOR EXCAVATION ON THIS PROJECT THE CONTRACTOR MUST:
1) NOTIFY THE GAS COMPANY OF THE PROPOSED LOCATION OF EXCAVATION.
2) TAKE PRECAUTION TO AVOID DAMAGE TO GAS COMPANY INSTALLATIONS.
SEE PROVINCIAL REGULATION 210/72 FOR DETAILS



200 WM	WATERMAIN	200 WM	SL, HYDRO	150 WM	WATERMAIN	150 WM
⊕	HYDRANT	⊕	MTS	⊕	HYDRANT	⊕
⊙	VALVE	⊙	TRAFFIC SIGNALS	⊙	VALVE	⊙
525 LDS	LAND DRAINAGE SEWER	525 LDS	GAS	50 GAS	300 LDS	LAND DRAINAGE SEWER
375 WWS	WASTEWATER SEWER	375 WWS	SURVEY BAR	250 WWS	WASTEWATER SEWER	250 WWS
○	MANHOLE	●	FENCE	⊕	PROFILE	⊕
□	CATCH BASIN	■	POLE - HYDRO, MTS	⊕	GROUND ABOVE PIPE	⊕
▽	CURB INLET	▽	CURB STOP	⊕	⊕ DITCH (NORTH & WEST)	⊕
∇	REDUCER	∇	GUY ANCHOR	⊕	⊕ DITCH (SOUTH & EAST)	⊕
X	COUPLER	X	LIGHT STANDARD	⊕	⊕ GUTTER (NORTH & EAST)	⊕
⊕	ANODE	⊕	TREE	⊕	⊕ GUTTER (SOUTH & EAST)	⊕
EXISTING	LEGEND-PLAN	PROPOSED	EXISTING	LEGEND-PLAN	PROPOSED	EXISTING
				LEGEND-PROFILE		

LOCATION APPROVED UNDERGROUND STRUCTURES

SUPV. U/G STRUCTURES COMMITTEE DATE

NOTE:
LOCATION OF UNDERGROUND STRUCTURES AS SHOWN ARE BASED ON THE BEST INFORMATION AVAILABLE BUT NO GUARANTEE IS GIVEN THAT ALL EXISTING UTILITIES ARE SHOWN OR THAT THE GIVEN LOCATIONS ARE EXACT. CONFIRMATION OF EXISTENCE AND EXACT LOCATION OF ALL SERVICES MUST BE OBTAINED FROM THE INDIVIDUAL UTILITIES BEFORE PROCEEDING WITH CONSTRUCTION.

NO.	REVISIONS	DATE	BY

CITY OF WINNIPEG WATER AND WASTE ENGINEERING DIVISION

DESIGNED BY: SC
CHECKED BY: SC

DRAWN BY: C/JH
APPROVED BY: KZ

HOR. SCALE: 1:250
VERTICAL: 1:50

RELEASED FOR CONSTRUCTION

DATE: 2009 02 12

ENGINEER'S SEAL

ORIGINAL SIGNED BY
S.R.J. COURNOYER
09/02/12

BID OPPORTUNITY 94-2009
FILENAME: D-11671.dwg
PLOT DATE: 2009 02 12

THE CITY OF WINNIPEG WATER AND WASTE DEPARTMENT

2009 WATERMAIN RENEWALS CONTRACT 2
ALEXANDER AVENUE
TECUMSEH STREET TO SHERMAN STREET

SHEET 7 OF 10
CITY DRAWING NUMBER
D-11671