

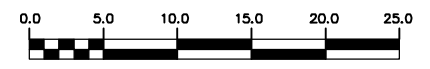
WATER SERVICE INFORMATION					
ADDRESS	SIZE(mm) & TYPE (STREET)	SIZE(mm) & TYPE (PROP)	SHORT & LONG MEASUREMENT	CORP. LOCATION	REMARKS
859 SHERBROOK ST	25 LEAD	25 LEAD	3.89 EWL BLDG	OPP S/C	SERVICED OFF WILLIAM RENEW TO P WITH 25 COPPER
870 SHERBROOK ST	150 AC	150 AC	4.87 EEL SHERBROOK	OPP VALVE	RECONNECT SERVICE
892 SHERBROOK ST	150 AC	150 AC	9.57 SSL LANE	---	RECONNECT SERVICE
892 SHERBROOK ST	---	---	30.55>NNL WILLIAM	---	SERVICE CUT-OFF
892 SHERBROOK ST	---	---	---	---	SERVICE CUT-OFF
853 WILLIAM AVE	20 LEAD	20 LEAD	19.90 NSL BLDG	OPP S/C	SERVICED OFF SHERBROOK RENEW TO P WITH 25 COPPER
870 SHERBROOK ST	150 AC	150 AC	21.01>NNL WILLIAM	---	RECONNECT SERVICE
847 ELGIN AVE	20 COPPER	20 COPPER	3.69 EWL HSE	0.1 W OF S/C	---
848 ELGIN AVE	20 COPPER	20 COPPER	20.40 EEL SHERBROOK	---	SERVICE CUT-OFF
851 ELGIN AVE	---	---	---	---	SERVICE CUT-OFF
851 ELGIN AVE	---	---	---	---	SERVICE CUT-OFF
851 ELGIN AVE	20 COPPER	20 COPPER	3.54 WEL BLDG	1.2 W OF S/C	RECONNECT SERVICE
851 ELGIN AVE	20 COPPER	20 COPPER	20.54 WML SHERBROOK	---	RECONNECT SERVICE
865 ELGIN AVE	20 COPPER	20 COPPER	4.76 WEL BLDG	1.3 W OF S/C	RECONNECT SERVICE
865 ELGIN AVE	100 COPPER	100 COPPER	21.64 WML SHERBROOK	---	RECONNECT SERVICE
868 ELGIN AVE	100 COPPER	100 COPPER	9.61 W NE CRN. BLDG	OPP VALVE	RENEW TO P WITH 150 PVC SERVICE
868 ELGIN AVE	100 COPPER	100 COPPER	40.28 WML SHERBROOK	---	RECONNECT SERVICE
868 ELGIN AVE	150 COPPER	150 COPPER	32.39 W NE CRN. BLDG	OPP VALVE	---
868 ELGIN AVE	150 COPPER	150 COPPER	63.05 WML SHERBROOK	---	RECONNECT SERVICE
867 ELGIN AVE	12 COPPER	12 COPPER	3.70 EWL HSE	0.8 E OF S/C	RECONNECT SERVICE
867 ELGIN AVE	20 COPPER	20 COPPER	34.40 WML SHERBROOK	---	RECONNECT SERVICE
867 ELGIN AVE	12 COPPER	12 COPPER	0.32 WEL BLDG	---	RECONNECT SERVICE
867 ELGIN AVE	20 COPPER	20 COPPER	39.54 WML SHERBROOK	4.9 E OF S/C	RECONNECT SERVICE

\* SERVICES TO BE RENEWED TO P UPON CONFIRMATION BY THE CONTRACTOR OF EXISTING 1/2" COPPER OR LEAD SERVICE. OBTAIN APPROVAL FROM CONTRACT ADMINISTRATOR PRIOR TO RENEWAL.

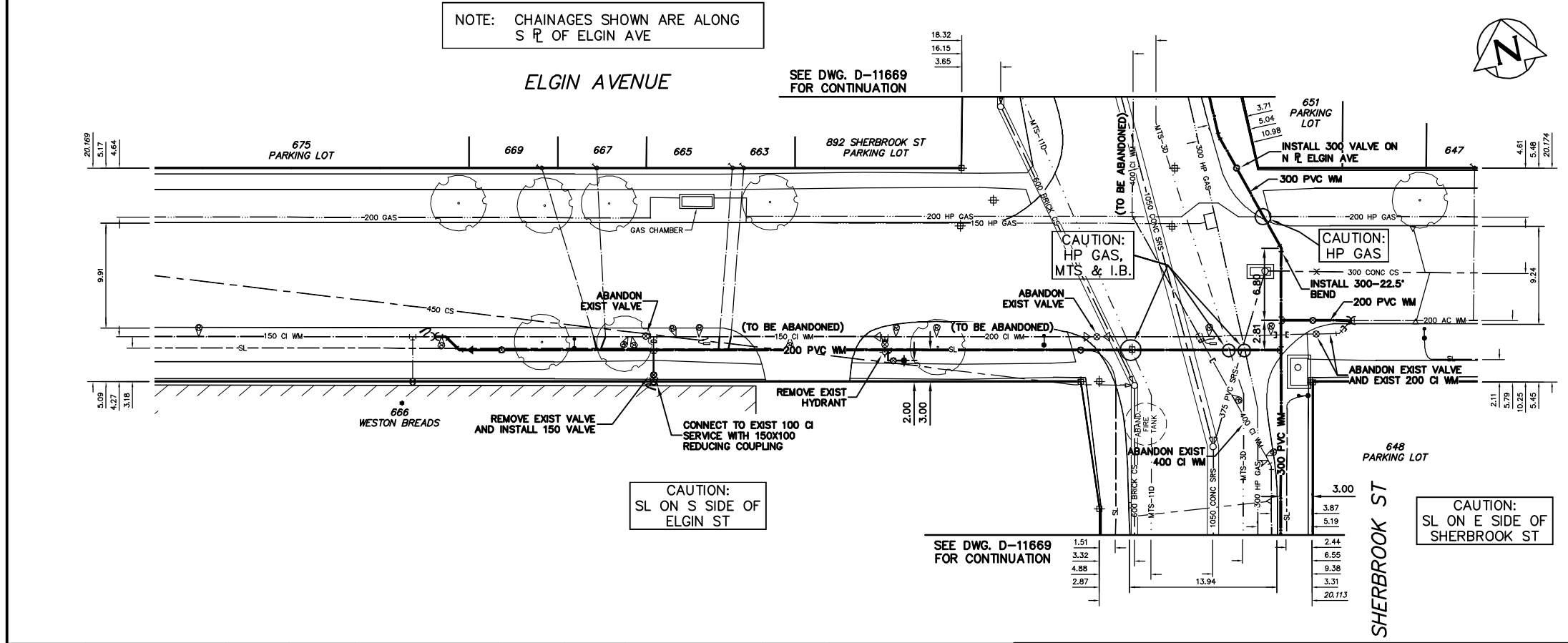
- CONSTRUCTION NOTES**
- EXPOSE EXISTING WATERMAIN & CONFIRM INVERTS PRIOR TO CONSTRUCTION.
  - CONFIRM LOCATION OF ALL SERVICES IN THE FIELD.
  - INSTALL WATERMAIN BY TRENCHLESS METHODS.
  - TRENCHES AND EXCAVATIONS WITHIN 1 METRE OF A PAVED AREA INCLUDING SIDEWALKS SHALL BE CLASS 3 BACKFILL.
  - ALL MATERIALS SHALL CONFORM TO THE CITY OF WINNIPEG STANDARD CONSTRUCTION SPECIFICATIONS.
  - MINIMUM COVER TO TOP OF WATERMAIN SHALL BE 2.4 m.
  - REPLACE ALL EXISTING LEAD SERVICES FROM PROPOSED WATERMAIN TO P.
  - NOTIFY ALL AFFECTED RESIDENTS AND BUSINESSES 24 HOURS IN ADVANCE OF ANY WATER SHUTDOWNS OR DISRUPTION OF SERVICE.

**METRIC**  
WHOLE NUMBERS INDICATE MILLIMETRES  
DECIMALIZED NUMBERS INDICATE METRES  
NOTE: ALL VALVES TO BE INSTALLED COUNTERCLOCKWISE TO CLOSE

**WARNING**  
IF POWER EQUIPMENT OR EXPLOSIVES ARE TO BE USED FOR EXCAVATION ON THIS PROJECT THE CONTRACTOR MUST:  
1) NOTIFY THE GAS COMPANY OF THE PROPOSED LOCATION OF EXCAVATION.  
2) TAKE PRECAUTION TO AVOID DAMAGE TO GAS COMPANY INSTALLATIONS.  
SEE PROVINCIAL REGULATION 210/72 FOR DETAILS



NOTE: CHAINAGES SHOWN ARE ALONG S R. OF ELGIN AVE



200 WM	WATERMAIN	200 WM	SL, HYDRO	150 WM	WATERMAIN	150 WM
+	HYDRANT	+	MTS	+	HYDRANT	+
⊙	VALVE	⊙	TRAFFIC SIGNALS	⊙	VALVE	⊙
525 LDS	LAND DRAINAGE SEWER	525 LDS	GAS	300 LDS	LAND DRAINAGE SEWER	300 LDS
375 WWS	WASTEWATER SEWER	375 WWS	SURVEY BAR	250 WWS	WASTEWATER SEWER	250 WWS
○	MANHOLE	●	FENCE	⊕	PROFILE	⊕
▽	CATCH BASIN	■	POLE - HYDRO, MTS	⊔	GROUND ABOVE PIPE	⊔
▽	CURB INLET	▽	CURB STOP	⊔	⊕ DITCH (NORTH & WEST)	⊔
▽	REDUCER	▽	GUY ANCHOR	⊔	⊕ DITCH (SOUTH & EAST)	⊔
X	COUPLER	X	LIGHT STANDARD	⊔	GUTTER (NORTH & EAST)	⊔
⊕	ANODE	⊕	TREE	⊔	GUTTER (SOUTH & EAST)	⊔
EXISTING	LEGEND-PLAN	PROPOSED	EXISTING	LEGEND-PLAN	PROPOSED	EXISTING

LOCATION APPROVED	B.M. ELEV.	FIELD BOOK #:
UNDERGROUND STRUCTURES		
SUPV. U/G STRUCTURES COMMITTEE		
DATE		
NOTE:		
LOCATION OF UNDERGROUND STRUCTURES AS SHOWN ARE BASED ON THE BEST INFORMATION AVAILABLE BUT NO GUARANTEE IS GIVEN THAT THE GIVEN LOCATIONS ARE EXACT. CONFIRMATION OF EXISTENCE AND EXACT LOCATION OF ALL SERVICES MUST BE OBTAINED FROM THE INDIVIDUAL UTILITIES BEFORE PROCEEDING WITH CONSTRUCTION.		
NO. REVISIONS	DATE	BY

**CITY OF WINNIPEG**  
**WATER AND WASTE**  
**ENGINEERING DIVISION**

DESIGNED BY: SC  
CHECKED BY: SC

DRAWN BY: C/JH  
APPROVED BY: KZ

HOR. SCALE: 1:250  
VERTICAL: 1:50

RELEASED FOR CONSTRUCTION

DATE: 2009 02 12

ENGINEER'S SEAL  
ORIGINAL SIGNED BY  
S.R.J. COUNOYER  
09/02/12

**THE CITY OF WINNIPEG**  
**WATER AND WASTE DEPARTMENT**

2009 WATERMAIN RENEWALS  
CONTRACT 2  
**ELGIN AVENUE**  
89 W OF SHERBROOK STREET TO SHERBROOK STREET

SHEET 6 OF 10  
CITY DRAWING NUMBER  
D-11670

BID OPPORTUNITY 94-2009  
FILENAME: D-11670.dwg  
PLOT DATE: 2009 02 12