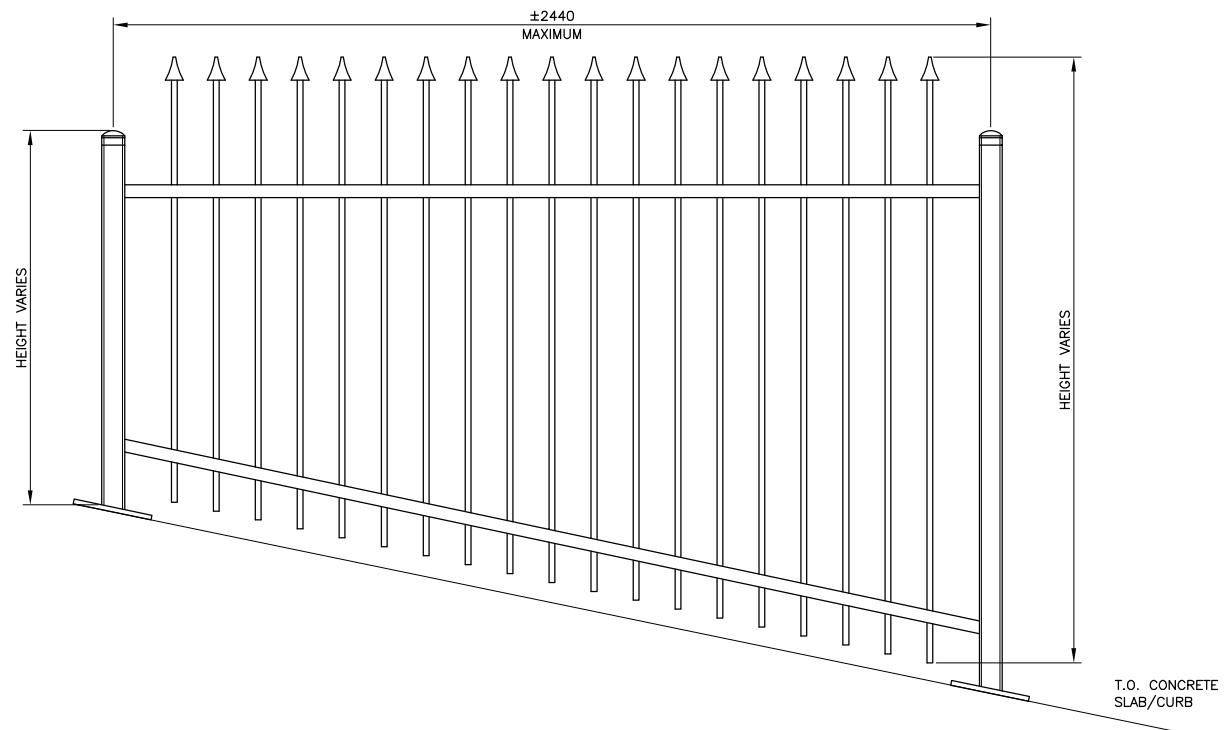
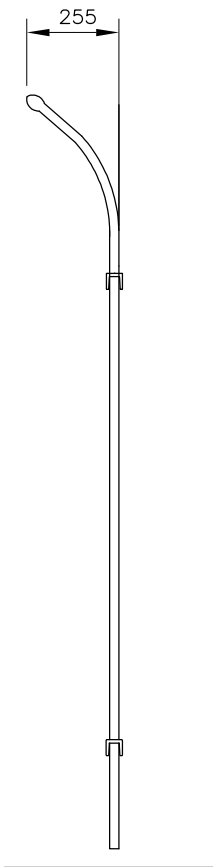
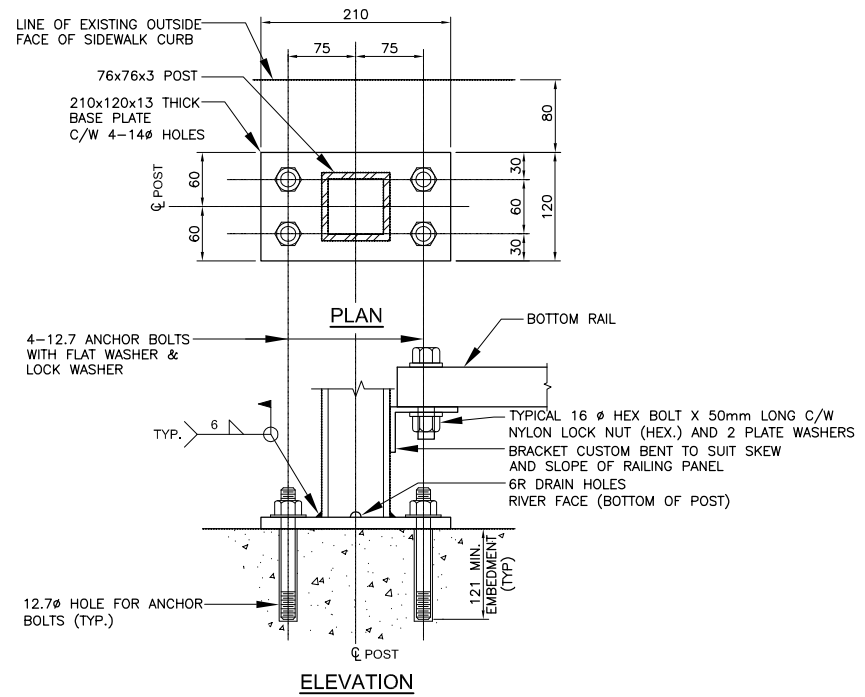


**AEGIS II - INVINCIBLE ORNAMENTAL FENCE ELEVATION**  
1:10



**AEGIS PLUS - CLASSIC ORNAMENTAL FENCE ELEVATION**  
1:10



**ORNAMENTAL FENCE BASE PLATE**  
1:4  
NOTE: - LOCATED AT EXISTING CONCRETE SIDEWALK SLAB.

**GENERAL NOTES:**

1. ORNAMENTAL FENCING AND GATE:
  - i) ALL PRIMARY FENCE COMPONENTS, PICKETS, RAILS, AND POSTS, SHALL HAVE A MINIMUM YIELD STRENGTH OF 344 MPA.
  - ii) ALL PRIMARY FENCE COMPONENTS, PICKETS, RAILS, AND POSTS, SHALL BE GALVANIZED BY HOT-DIP PROCESS AND SHALL BE IN ACCORDANCE WITH CSA G164 FOR A MINIMUM RETENTION 276 G/M2 (COATING DESIGNATION G90).
  - iii) GALVANIZED STEEL FENCE COMPONENTS SHALL RECEIVE AN EPOXY PRIMER FOLLOWED BY AN ACRYLIC TOPCOAT. THE CUMULATIVE COATING THICKNESS OF EPOXY AND ACRYLIC SHALL BE MINIMUM 2 MILS AND MAXIMUM 4 MILS.
  - iv) ALL ORNAMENTAL FENCE COMPONENTS SHALL BE BLACK IN COLOUR.
  - v) CONTRACTOR TO PROVIDE SAMPLE FINIAL PRIOR TO CONSTRUCTION FOR CONTRACT ADMINISTRATOR APPROVAL.
  - vi) AN APPROVED PRODUCT MODIFIED AS SHOWN IS AEGIS II-INVINCIBLE AND AEGIS PLUS CLASSIC ORNAMENTAL FENCE AS MANUFACTURED BY AMERISTAR FENCE PRODUCTS, INC. 1555 NORTH MINGO TULSA, OK 74116.
2. DETAIL SHOWING ORNAMENTAL FENCE PANEL AS A LEVEL ELEVATION, FOR INSTALLATIONS THAT FOLLOW SLOPING GRADES, POST AND PICKETS MUST REMAIN VERTICAL. ALL DIMENSIONS MUST BE MEASURED ALONG GRADE.
3. ALL POSTS SHALL BE PLUMBED AND SET TO GIVE CORRECT ALIGNMENT. BENDING OF POSTS TO GIVE CORRECT ALIGNMENT IS NOT ACCEPTABLE.
4. ALL FENCES TO BE A MAXIMUM 2133 HEIGHT.
5. POST SPACING FOR ALL FENCES TO BE MINIMUM 1220 SPACING AND MAXIMUM 2440 SPACING.
6. FENCE GATE OPENING TO BE 1220 WITH A 180° SWING.
7. ALL MEMBERS TO BE HOT DIP GALVANIZED ACCORDING TO THE SPECIFICATIONS.
8. FIELD-APPLY GALVANIZING TO DAMAGED SURFACES AND WELDED AREAS AS PER SPECIFICATIONS.
9. ALL ANCHOR BOLTS SHALL BE 12.7 mm. x 121 mm. MIN EMBEDMENT HILTI KWIK BOLT 3 EXPANSION ANCHOR WITH NUT, FLAT WASHER AND LOCK WASHER. ALL TO BE STAINLESS STEEL OR HOT-DIP GALVANIZED.
10. SPECIFICATIONS SHALL SUPERSEDE DRAWING NOTES.

B.M. ELEV.	DESIGNED BY	JCP
	DRAWN BY	JCP
	CHECKED BY	JSB
	REVIEWED BY	JSB
	HOR. SCALE	AS NOTED
	VERTICAL	
NO.	REVISIONS	DATE
		AUGUST 2009

**DILLON CONSULTING**

RELEASED FOR CONSTRUCTION

ENGINEER'S SEAL

PROVINCE OF MANITOBA  
REGISTERED PROFESSIONAL ENGINEER  
J.S. BETKE  
SEPT. 4, 2009  
Member 22412

CONSULTANT PROJECT NO.  
05-5069-4000

**THE CITY OF WINNIPEG**  
PUBLIC WORKS DEPARTMENT

**Winnipeg**

**MARYLAND TWIN BRIDGES REHABILITATION PROJECT**  
MAJOR REPAIRS TO NORTH END PEDESTRIAN RAMPS AND STAIRS

ORNAMENTAL FENCE DETAILS

CITY DRAWING NUMBER  
B108-09-06  
SHEET 07 OF 09

BID OPPORTUNITY  
630-2009