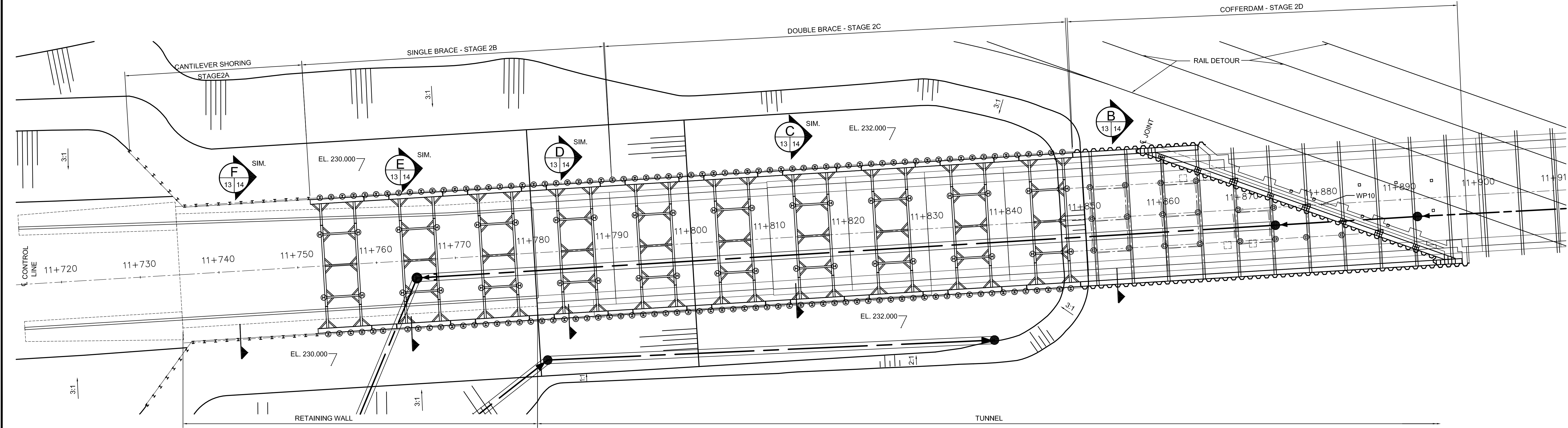
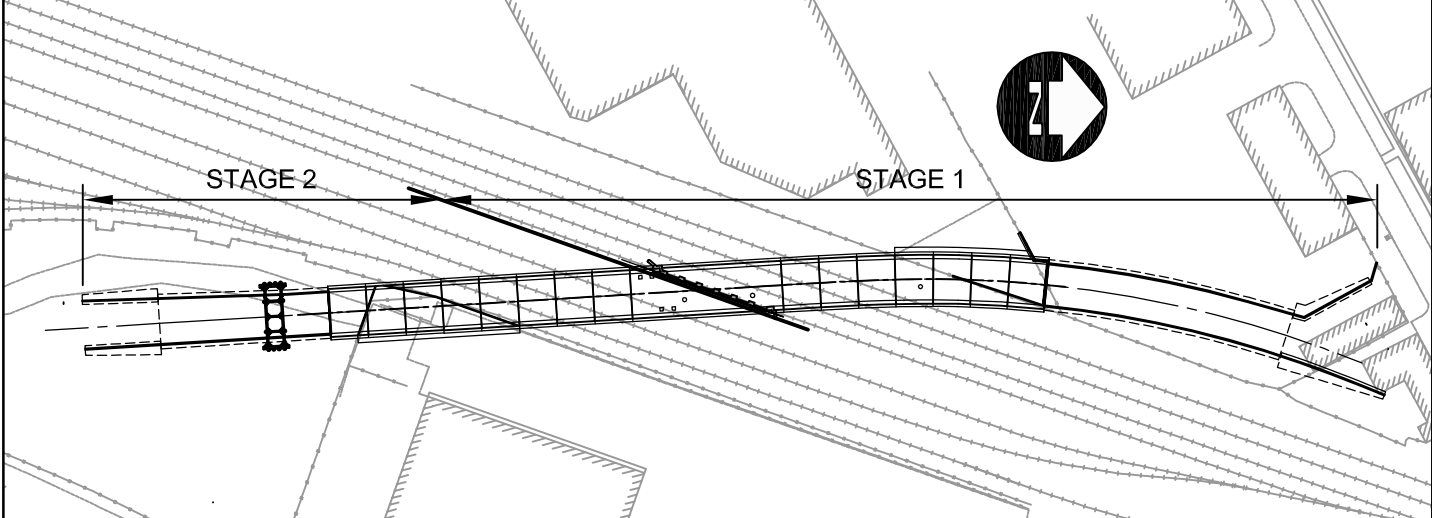


STAGE 1 PLAN
SCALE 1:250



STAGE 2 PLAN
SCALE 1:250



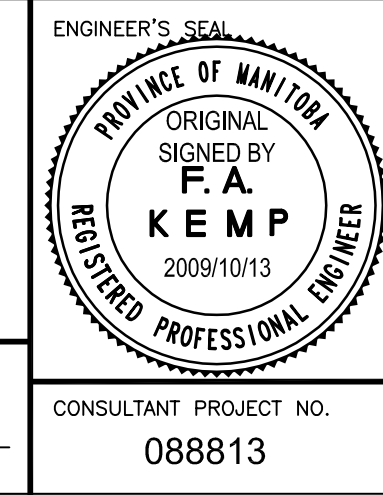
KEY PLAN
1:2000

AECOM
Certificate of Authorization
AECOM Canada Ltd.
No. 4671 Date: 2009.10.13

DO NOT SCALE THIS DOCUMENT. ALL MEASUREMENTS MUST BE OBTAINED FROM STATED DIMENSIONS. This drawing has been prepared for the use of AECOM's client and may not be used, reproduced or relied upon by third parties, except as agreed by AECOM and its client, as required by law or for use by governmental reviewing agencies. AECOM accepts no responsibility, and denies any liability whatsoever, to any party that modifies this drawing without AECOM's express written consent.

LOCATION UNDERGROUND	APPROVED STRUCTURES	B.M. ELEV.
SUPV. U/G STRUCTURES COMMITTEE	DATE	
NOTE: LOCATION OF UNDERGROUND STRUCTURES AS SHOWN ARE BASED ON THE BEST INFORMATION AVAILABLE. BUT NO GUARANTEE IS GIVEN THAT ALL EXISTING UTILITIES ARE SHOWN OR THAT THE GIVEN LOCATIONS ARE EXACT. CONFIRMATION OF EXISTENCE AND EXACT LOCATION OF ALL SERVICES MUST BE OBTAINED FROM THE INDIVIDUAL UTILITIES BEFORE PROCEEDING WITH CONSTRUCTION.		
1	ISSUED FOR ADDENDUM #4	11.04.2009 KAA
0	ISSUED FOR TENDER	10.13.2009 KAA
NO.	REVISIONS	DATE BY

DESIGNED BY	FK
DRAWN BY	KAA
CHECKED BY	RE/KC
APPROVED BY	EBL
HOR. SCALE	AS NOTED
VERTICAL	
DATE	2009.10.13



THE CITY OF WINNIPEG
TRANSIT DEPARTMENT

Winnipeg

SOUTHWEST RAPID TRANSIT CORRIDOR - STAGE 1
TRANSITWAY TUNNEL AT CN RIVER SUBDIVISION
MILEAGE 1.38 & ASSOCIATED WORKS

CITY DRAWING NUMBER: U237-09-13
SHEET 13 OF 73
CONSULTANT DRAWING NUMBER: C4-S1001-T

CONSULTANT PROJECT NO. 088813

STAGE 1 AND 2 PLANS

L:\work\112000\112009\02-cad\Proj_Drawings\STR\CONTR\577-2009_STAGE_1_AND_2_PLANS_C4S1001-T-RO.dwg