

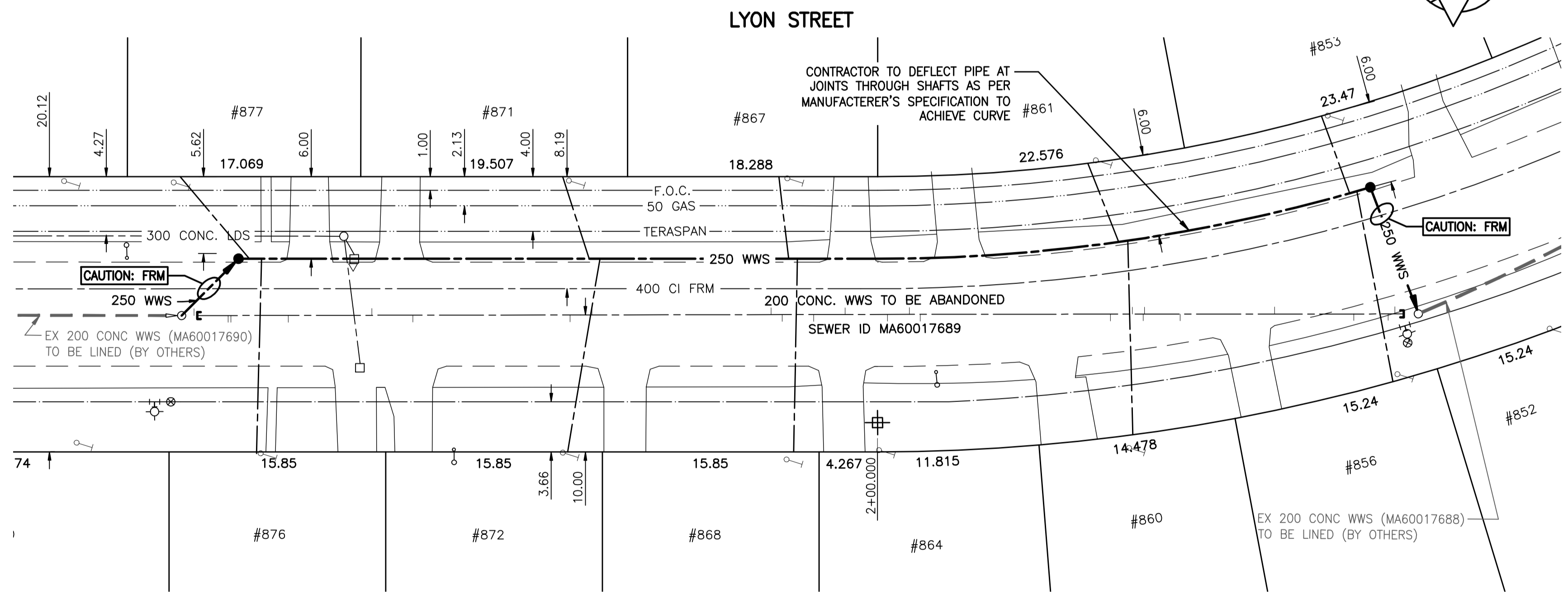
WATER SERVICE INFORMATION

ADDRESS	SIZE (mm) & TYPE (STREET)	DIST TO PROP	SHORT & LONG MEASUREMENT	CORP MEASUREMENT
852 LYON ST RESIDENTIAL	19 COPPER	NO INFO AVAILABLE	0.3 m SNL HSE 103.6 m N HYD @ 880	NO INFO AVAILABLE
853 LYON ST RESIDENTIAL	19 COPPER	NO INFO AVAILABLE	9.6 m SNL HSE 86.6 m N HYD @ 880	0.5 m S OF 2ND HYD S OF OAKENWALD
856 LYON ST RESIDENTIAL	19 COPPER	NO INFO AVAILABLE	0.3 m SNL HSE 92.0 m N HYD @ 880	0.5 m N OF 2ND HYD S OF OAKENWALD
860 LYON ST RESIDENTIAL	19 COPPER	NO INFO AVAILABLE	1.8 m NSL HSE 71.5 m N HYD @ 880	SAME AS S/C
861 LYON ST RESIDENTIAL	19 COPPER	NO INFO AVAILABLE	3.7 m NSL HSE 69.3 m N HYD @ 880	NO INFO AVAILABLE
864 LYON ST RESIDENTIAL	19 COPPER	NO INFO AVAILABLE	0.9 m NSL HSE 53.2 m N HYD @ 880	0.3 m N OF SC
867 LYON ST RESIDENTIAL	19 COPPER	NO INFO AVAILABLE	2.9 m SNL HSE 46.6 m N HYD @ 880	NO INFO AVAILABLE
868 LYON ST RESIDENTIAL	19 COPPER	NO INFO AVAILABLE	0.3 S/NHL 46.3 m N/HYD @ #880	0.6 m N/SC
871 LYON ST RESIDENTIAL	19 COPPER	NO INFO AVAILABLE	1.5 m N OF OLD C/C OPP S/C	NO INFO AVAILABLE
872 LYON ST RESIDENTIAL	19 COPPER	NO INFO AVAILABLE	0.8 m SNL HSE 29.9 m N HYD @ 880	OPP S/C
876 LYON ST RESIDENTIAL	19 COPPER	NO INFO AVAILABLE	0.3 m N S/L HSE	NO INFO AVAILABLE
877 LYON ST RESIDENTIAL	19 COPPER	NO INFO AVAILABLE	0.3 m NSL HSE 1.5 m N HYD @ 880	1.5 m N S/C
880 LYON ST RESIDENTIAL	19 COPPER	NO INFO AVAILABLE	5.2 m S/N H/L	OPP S/C

SEWER SERVICE INFORMATION
REFERENCE MANHOLE 60015315

DIST. FROM REF. MANHOLE	JUNCTION DIA.	CLOCK REF.	SERVICE TYPE	REMARKS
0.9	150	10	CX	LIVE
3.4	150	02	CNI	PVC SADDLE
3.6	150	02	CNI	PVC SADDLE/CAPPED
7.8	150	03	CX	LIVE
13.9	150	09	CNI	CAPPED
16.9	150	03	CNI	CAPPED
28.4	150	03	CNI	LIVE
30.0	150	11	CNI	LIVE
43.1	150	09	JX	CAPPED
43.9	150	03	JX	CAPPED
46.2	150	03	CX	LIVE
48.5	150	10	CX	LIVE
51.6	150	02	CX	HOLE @ TOP OF PIPE
53.2	150	09	JX	CAPPED
54.0	150	03	JX	CAPPED
67.9	150	03	CX	LIVE
69.5	150	09	JN	CAPPED
70.3	150	03	JN	CAPPED
70.4	150	10	CNI	LIVE
73.0	150	02	CNI	LIVE
79.9	150	10	CNI	CAPPED
85.7	150	01	CNI	CAPPED
88.2	150	02	JN	LIVE
88.7	150	10	CNI	LIVE

- CONSTRUCTION NOTES:**
- ALL NEW SEWERS AND SEWER SERVICES TO BE INSTALLED BY TRENCHLESS METHODS.
 - SEWER SERVICE LOCATIONS TO BE CONFIRMED PRIOR TO CONSTRUCTION.
 - EXCAVATIONS WITHIN 1.0m OF PAVEMENT TO BE BACKFILLED WITH CLASS 3 MATERIAL.
 - NEW SEWER SERVICES RENEWED TO PROPERTY LINE TO HAVE A MINIMUM SLOPE OF 1.0%.



METRIC
WHOLE NUMBERS INDICATE MILLIMETRES
DECIMALIZED NUMBERS INDICATE METRES

WARNING
IF POWER EQUIPMENT OR EXPLOSIVES ARE TO BE USED FOR EXCAVATION ON THIS PROJECT THE CONTRACTOR MUST:
1) NOTIFY THE GAS COMPANY OF THE PROPOSED LOCATION OF EXCAVATION.
2) TAKE PRECAUTION TO AVOID DAMAGE TO GAS COMPANY INSTALLATIONS.
SEE PROVINCIAL REGULATION 140/92 FOR DETAILS

NOTE:
STATIONING IS ALONG E. P/L OF LYON ST.

BID OPPORTUNITY 536-2009

BENCH MARK: 84R591 - N. side Dowker Ave. @ South Dr., Tbit, on top of 0.05 m dia. x 2.4 m iron pipe, 1.5 m S. of N. L. of Dowker Ave. & 8.2 m E. of W.L. of South Dr.



SEWER SERVICE INFORMATION

ADDRESS	SIZE	PROPERTY LINE LOCATION	JUNCTION LOCATION
852 LYON ST RESIDENTIAL	NO INFO AVAILABLE	NO INFO AVAILABLE	NO INFO AVAILABLE
853 LYON ST RESIDENTIAL	NO INFO AVAILABLE	NO INFO AVAILABLE	NO INFO AVAILABLE
856 LYON ST RESIDENTIAL	NO INFO AVAILABLE	NO INFO AVAILABLE	NO INFO AVAILABLE
860 LYON ST RESIDENTIAL	NO INFO AVAILABLE	NO INFO AVAILABLE	NO INFO AVAILABLE
861 LYON ST RESIDENTIAL	NO INFO AVAILABLE	NO INFO AVAILABLE	NO INFO AVAILABLE
864 LYON ST RESIDENTIAL	NO INFO AVAILABLE	NO INFO AVAILABLE	NO INFO AVAILABLE
867 LYON ST RESIDENTIAL	NO INFO AVAILABLE	NO INFO AVAILABLE	NO INFO AVAILABLE
868 LYON ST RESIDENTIAL	NO INFO AVAILABLE	NO INFO AVAILABLE	NO INFO AVAILABLE
871 LYON ST RESIDENTIAL	NO INFO AVAILABLE	NO INFO AVAILABLE	NO INFO AVAILABLE
872 LYON ST RESIDENTIAL	NO INFO AVAILABLE	NO INFO AVAILABLE	NO INFO AVAILABLE
876 LYON ST RESIDENTIAL	NO INFO AVAILABLE	NO INFO AVAILABLE	NO INFO AVAILABLE
877 LYON ST RESIDENTIAL	NO INFO AVAILABLE	NO INFO AVAILABLE	NO INFO AVAILABLE
880 LYON ST RESIDENTIAL	NO INFO AVAILABLE	NO INFO AVAILABLE	NO INFO AVAILABLE

150 WM	WATERMAIN	150 WM	HYDRO	150 WM	WATERMAIN	150 WM
⊕	HYDRANT	⊕	M.T.S.	⊕	HYDRANT, VALVE	⊕
⊕	VALVE	⊕	CONCRETE	⊕	LAND DRAINAGE SEWER	⊕
⊕	LAND DRAINAGE SEWER	⊕	ASPHALT	⊕	WASTE WATER SEWER	⊕
⊕	WASTE WATER SEWER	⊕	SIDEWALK	⊕	C PROFILE	⊕
○	MANHOLE	○	PROPERTY LINE	⊕	NORTH OR WEST GUTTER	⊕
⊕	CATCH BASIN	⊕	SURVEY BAR	⊕	SOUTH OR EAST GUTTER	⊕
⊕	CURB INLET	⊕	DITCH	⊕	NORTH OR WEST DITCH	⊕
⊕	JUNCTIONS	⊕	ELEVATION	⊕	SOUTH OR EAST DITCH	⊕
⊕	CULVERT	⊕		⊕	NORTH OR WEST DITCH	⊕
⊕	GAS	⊕		⊕	SOUTH OR EAST DITCH	⊕
EXISTING	LEGEND-PLAN	PROPOSED	EXISTING	LEGEND-PLAN	PROPOSED	EXISTING
EXISTING	LEGEND-PROFILE	PROPOSED	EXISTING	LEGEND-PROFILE	PROPOSED	EXISTING

LOCATION APPROVED UNDERGROUND STRUCTURES

SUPV. U/G STRUCTURES COMMITTEE DATE

NOTE:
LOCATION OF UNDERGROUND STRUCTURES AS SHOWN ARE BASED ON THE BEST INFORMATION AVAILABLE BUT NO GUARANTEE IS GIVEN THAT ALL EXISTING UTILITIES ARE SHOWN OR THAT THE GIVEN LOCATIONS ARE EXACT. CONFIRMATION OF EXISTENCE AND EXACT LOCATION OF ALL SERVICES MUST BE OBTAINED FROM THE INDIVIDUAL UTILITIES BEFORE PROCEEDING WITH CONSTRUCTION.

NO.	REVISIONS	DATE	BY

Stantec Consulting Ltd.
905 Waverley Street, Winnipeg, Manitoba
Tel 204-489-5900 Fax 204-453-9012

DESIGNED BY: J.D.C. CHECKED BY: J.K.H.
DRAWN BY: W.R.A. APPROVED BY: H.A.K.

HOR. SCALE: 1:250
VERTICAL: 1:50

RELEASED FOR CONSTRUCTION:
SIGNED BY: K. ZUREK
DATE: AUG. 13, 2009

ENGINEER'S SEAL

ORIGINAL SEALED BY
H.A. KATZ
P. ENG.
09.08.13

CONSULTANT DRAWING NO.
C-202

THE CITY OF WINNIPEG
WATER AND WASTE DEPARTMENT
ENGINEERING DIVISION

Winnipeg

LYON STREET
1ST MH N OF DOWKER ST TO 2ND MH N OF DOWKER ST
2009 SEWER RENEWAL

SHEET 3 OF 14
CAD FILE DRAWING NUMBER I1480c-201-712.dwg
CITY DRAWING NUMBER 8859

W:\1120\dwg\11211480\dwg\11211480c-201.dwg
 2009-08-13 09:28:09 By: jones