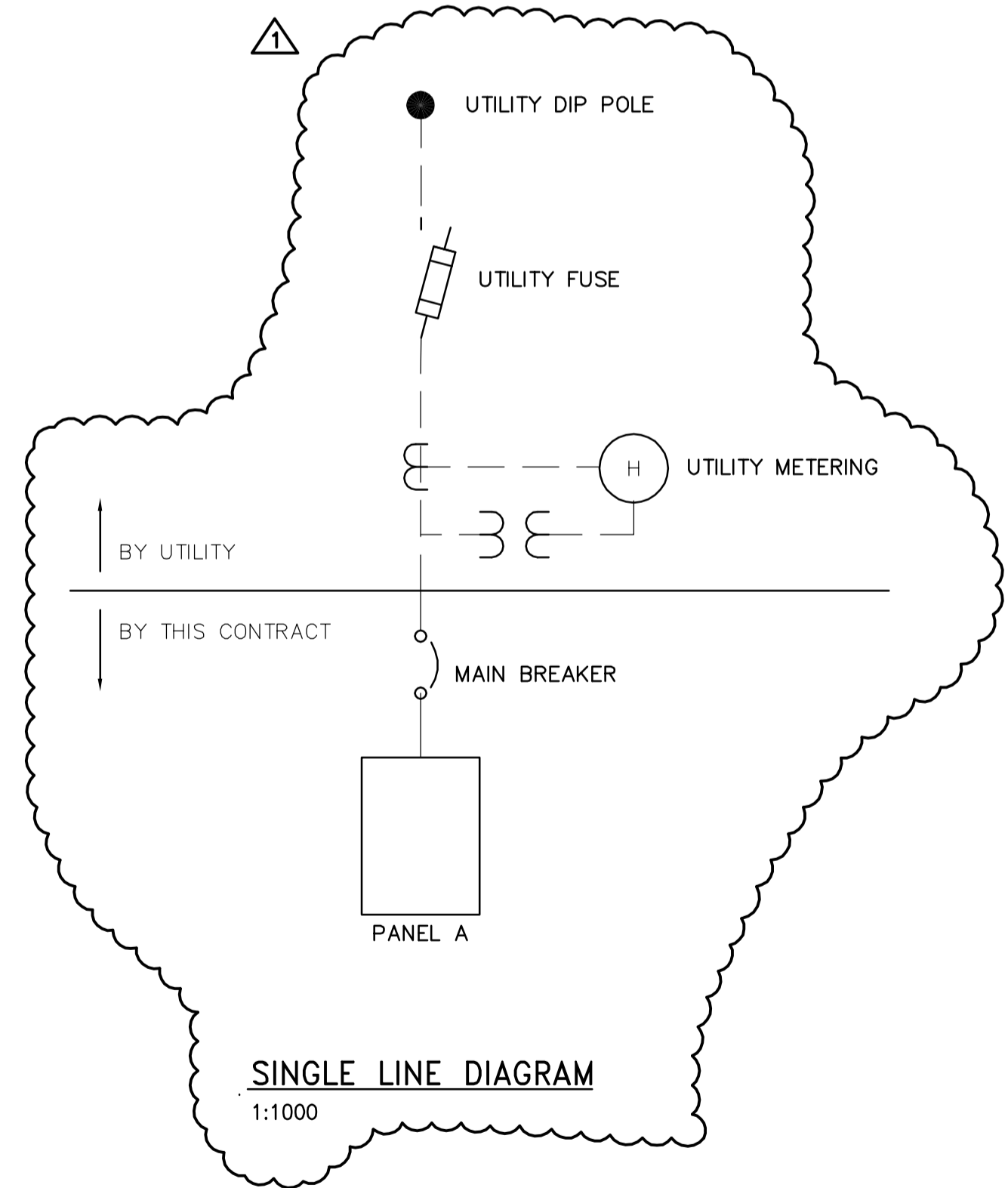
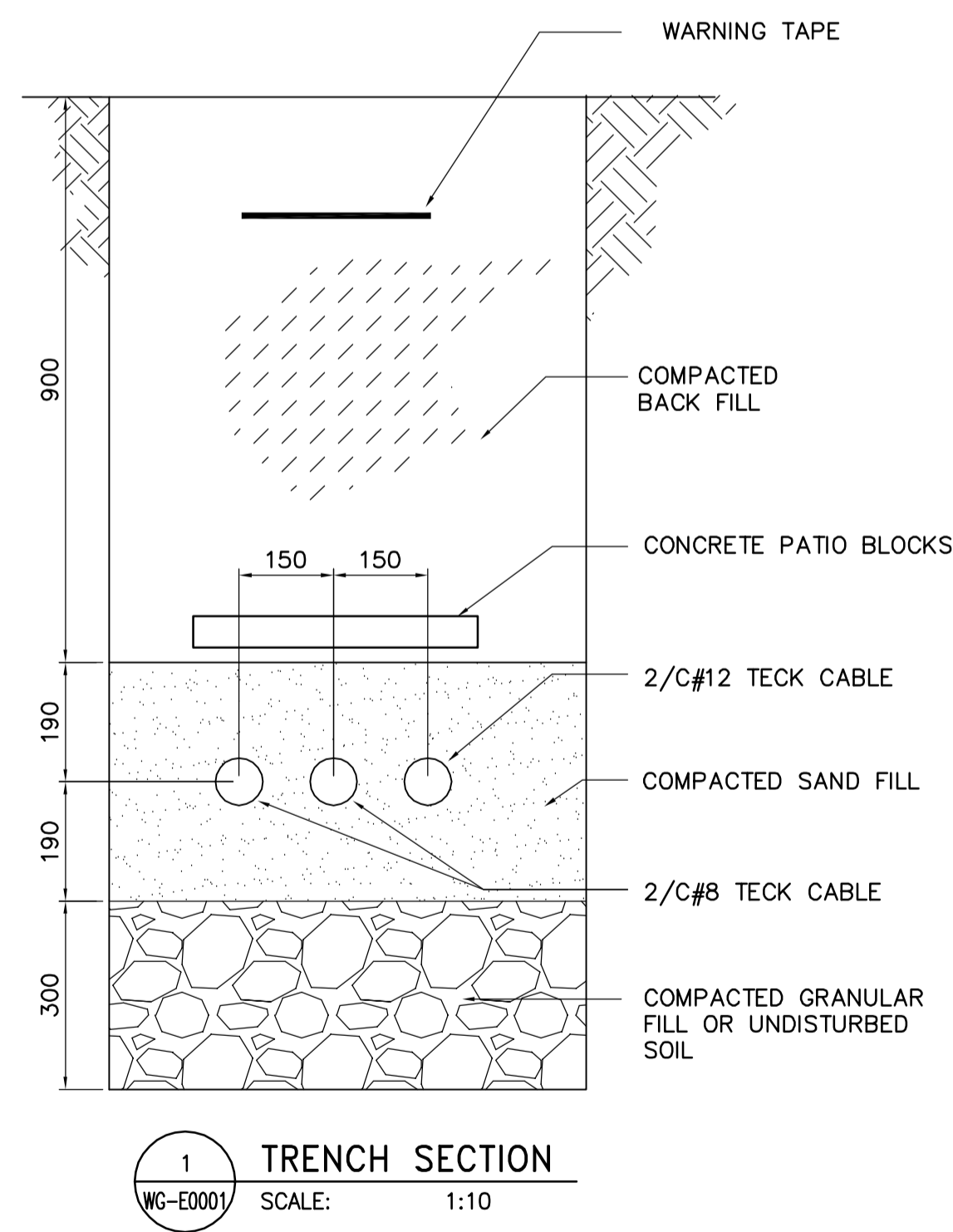


LEGEND:

- FIXTURE TYPE IDENTIFIER
- FLUORESCENT LUMINAIRE
- 250W MH, 120V POLE MOUNTED
- WALL MOUNTED FIXTURE
- SINGLE POLE SWITCH - 3 INDICATES 3-WAY SWITCH
- PHOTOCELL
- WALL MOUNTED EXIT LIGHT - ARROWS AS REQUIRED
- BATTERY PACK C/W HEADS AS INDICATED
- WALL MOUNTED EMERGENCY REMOTE HEADS
- DUPLEX RECEPTACLE
- SINGLE RECEPTACLE
- SPECIAL PURPOSE EQUIPMENT CONNECTION
- MOTOR/MECHANICAL LOAD
- DISCONNECT SWITCH
- DOOR CONTACT
- MOTION DETECTOR
- C.C.T.V. CAMERA
- TRANSIENT VOLTAGE SURGE SUPPRESSOR
- TELEPHONE OUTLET
- DATA OUTLET



 APECM Certificate of Authorization Earth Tech Canada Inc. No. 730	B.M. ELEV.	 Frederickson Cooper ARCHITECTS	 EarthTech A Tyco International Ltd. Company	ENGINEER'S SEAL	 THE CITY OF WINNIPEG WATER AND WASTE DEPARTMENT SOLID WASTE SERVICES DIVISION BRADY RD. LANDFILL NEW ENTRANCE AND SCALE FACILITY ELECTRICAL SITE PLAN AND LEGEND	CITY FILE NUMBER
		DESIGNED BY: GSN	CHECKED BY: PS	ORIGINAL SIGNED BY: P. STRYK		SHEET OF
		DRAWN BY: ERC	APPROVED BY: TGS	2007/07/20		
		SCALE: ERC	RELEASED FOR CONSTRUCTION BY: V. JEANCART	CONSULTANT DRAWING NO. E1.01		CITY DRAWING NUMBER SWD-D-388
	01 357-2007 ADDENDUM 1 07/07/31 ERC					
	00 ISSUED FOR TENDER 07/07/20 ERC					
	NO. REVISIONS	DATE	BY	DATE		
				2006/08/31		
				2007/07/20		