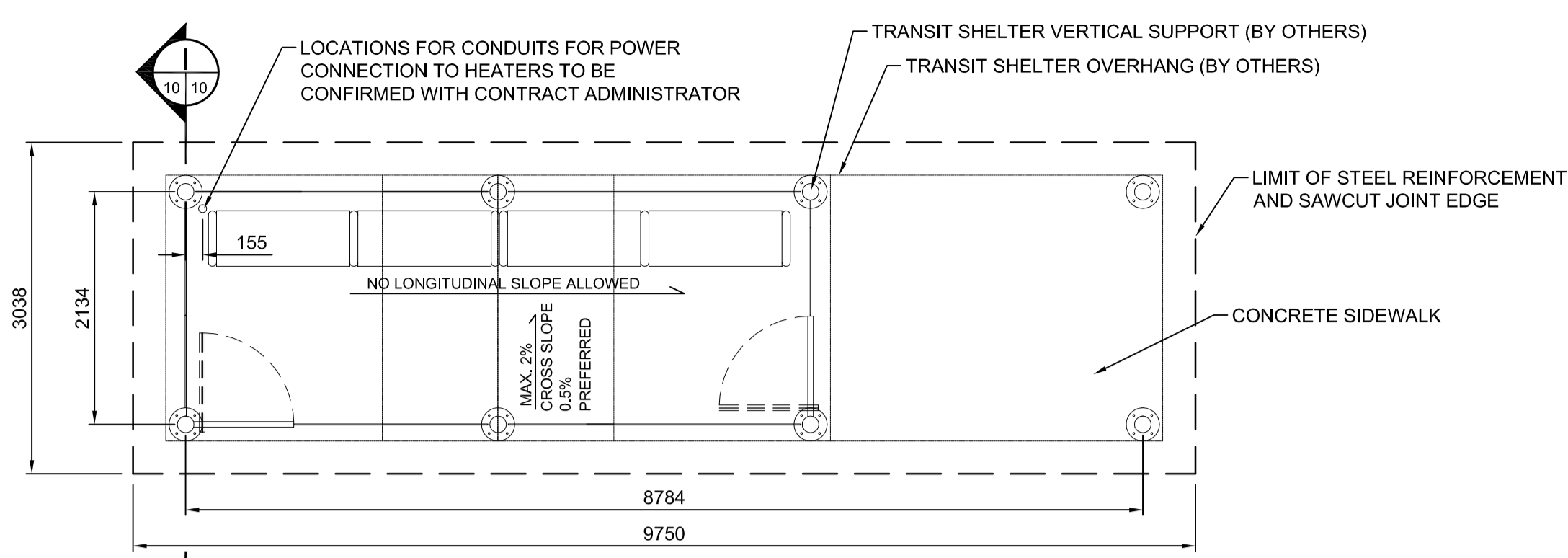


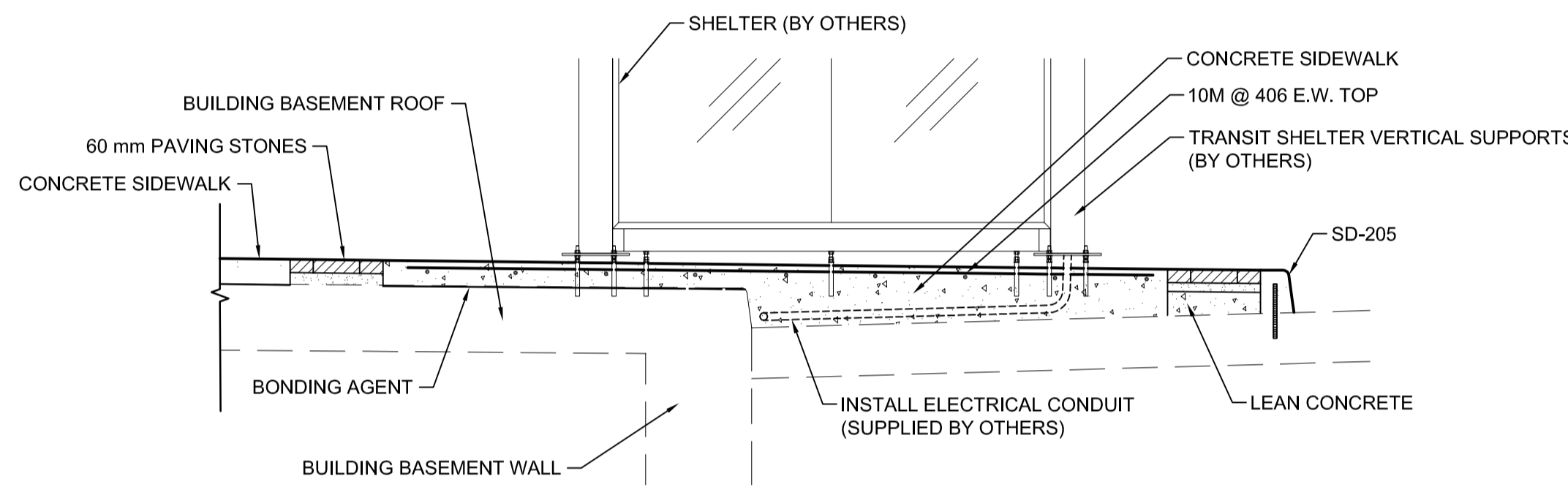
G BUS STOP FLAG BASE WITH CONCRETE SIDEWALK AND UNIT PAVERS
SCALE - 1:20



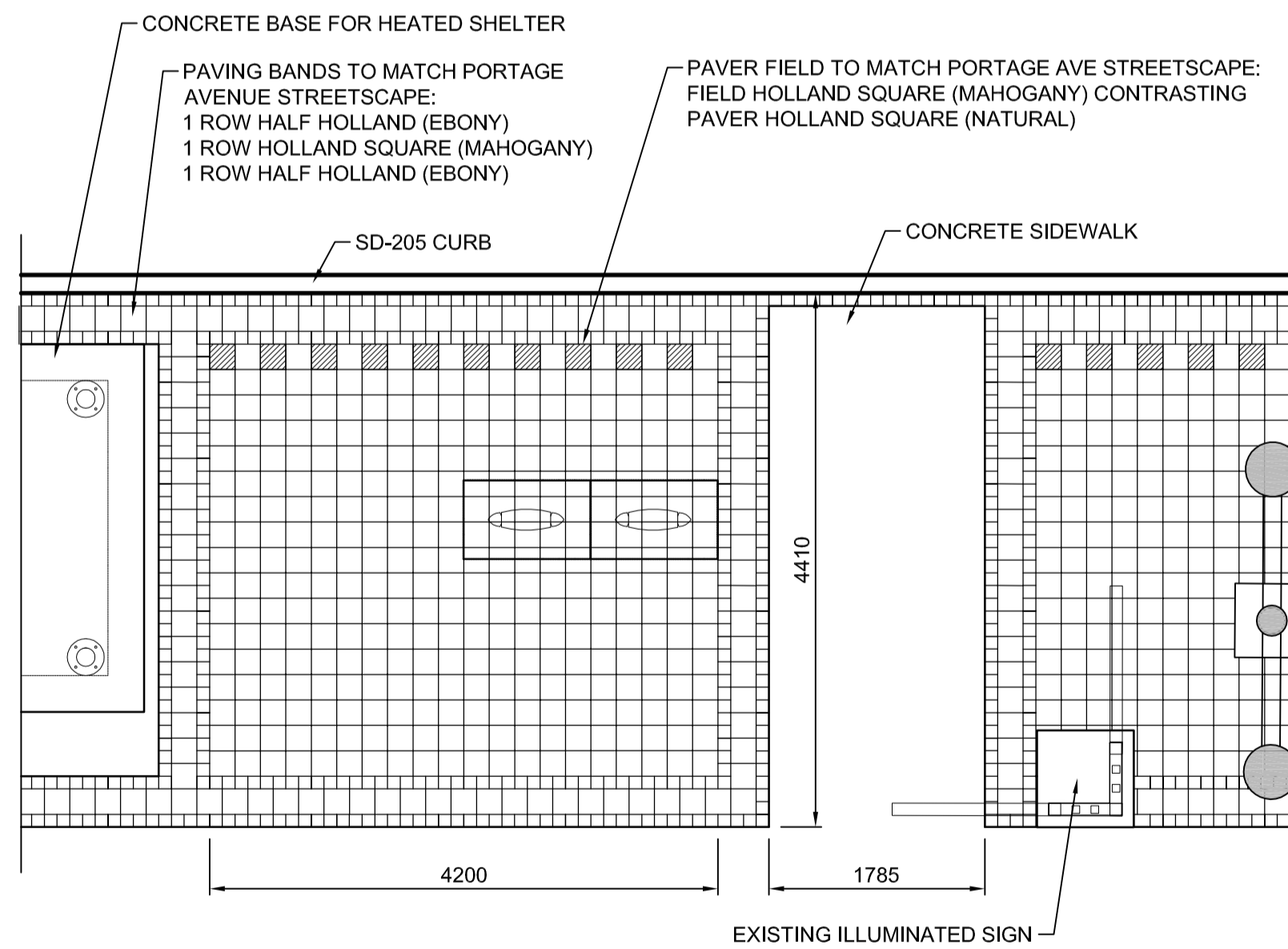
SHELTER BASE PLAN

NOTES:
CONFIRM FINAL CROSS SLOPE WITH CONTRACT ADMINISTRATOR PRIOR TO LAYOUT.
CONTRACTOR TO REPORT ANY DISCREPANCIES TO CONTRACT ADMINISTRATOR PRIOR TO LAYOUT.
CONTRACTOR TO VERIFY EXACT DIMENSIONS OF SHELTER PRIOR TO LAYOUT WITH SHELTER MANUFACTURER. CONTRACT ADMINISTRATOR TO SUPPLY CONTACT INFORMATION.

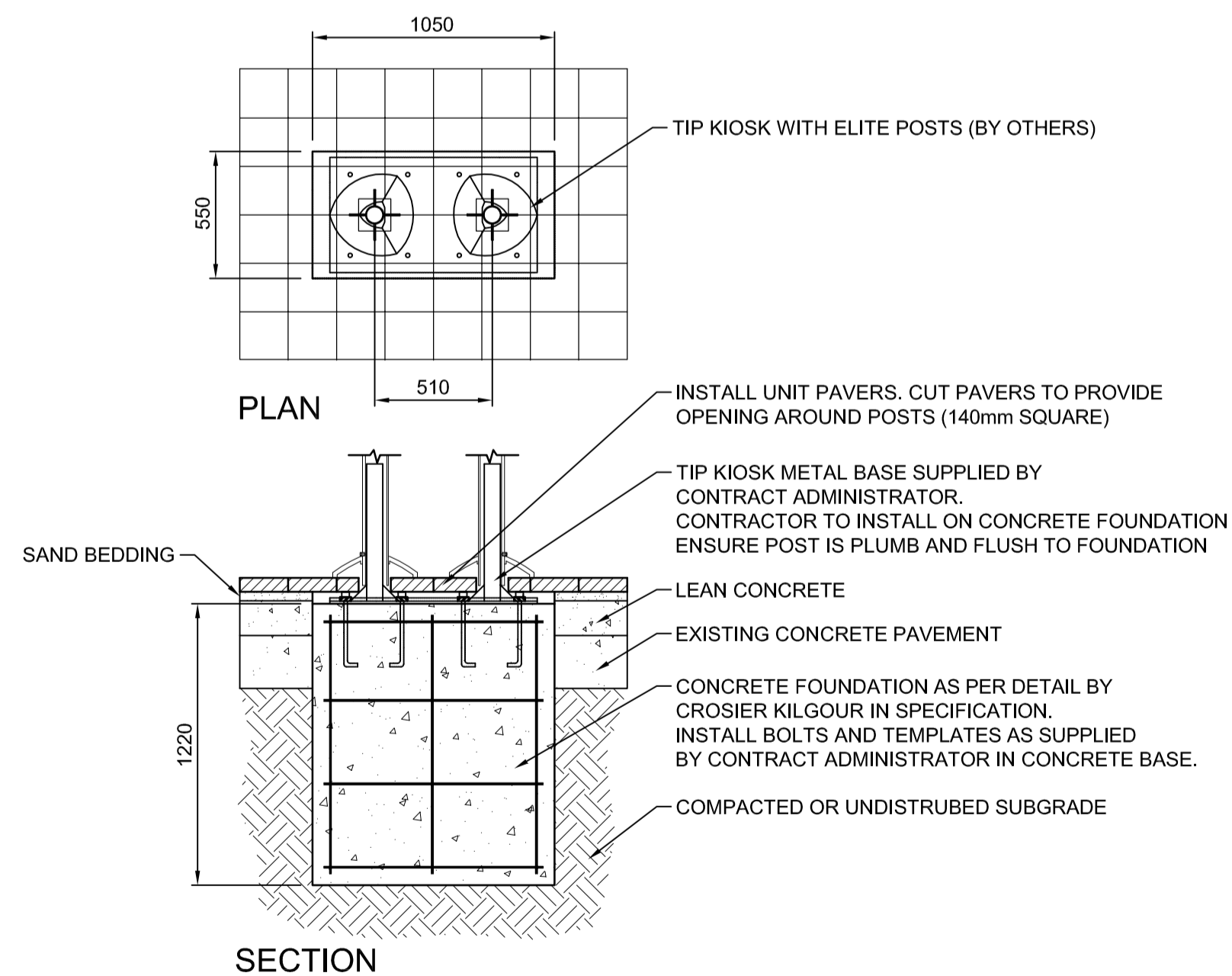
H CONCRETE BASE FOR HEATED SHELTER
SCALE - 1:50



I SHELTER BASE SECTION
SCALE - 1:25



J PORTAGESCAPE PAVING STONE PATTERN
SCALE - 1:50



K CONCRETE BASE FOR TIP KIOSK (x2)
SCALE - 1:25

- GENERAL CONCRETE NOTES**
1. ALL DIMENSIONS SHALL BE CHECKED AND VERIFIED PRIOR TO COMMENCING CONSTRUCTION.
 2. CONFIRM THE LOCATION OF ALL SUBGRADE SERVICES PRIOR TO COMMENCING SITE WORK.
 3. EXCAVATE ALL TOPSOIL, ORGANIC MATERIAL AND LOOSE OR UNSUITABLE FILL TO THE APPROVAL OF THE CONTRACT ADMINISTRATOR.
 4. EXCAVATE BELOW SLABS ON FILL TO PROVIDE A MINIMUM OF 150mm OF GRANULAR. FILL SHALL BE COMPACTED TO 95% MODIFIED PROCTOR DENSITY.
 5. CONSTRUCTION JOINT LOCATIONS ARE TO BE APPROVED BY THE CONTRACT ADMINISTRATOR.

- REINFORCING NOTES**
6. PERFORM CONCRETE REINFORCING WORK IN ACCORDANCE WITH CAN3-A23.3-M84 UNLESS INDICATED OTHERWISE.
 7. ALL REINFORCING BARS SHALL BE DEFORMED BARS WITH A MINIMUM SPECIFIED YIELD STRENGTH 400MPa FOR 20M BARS AND 300MPa FOR 15M AND 10M BARS IN ACCORDANCE WITH CAN 630.18 M92.
 8. COVER TO REINFORCING: SLABS 50mm CLEAR TOP AND BOTTOM.
 9. BEFORE PLACING ENSURE REINFORCING IS CLEAN, FREE OF LOOSE SCALE, DIRT, OR OTHER FOREIGN COATING WHICH WOULD REDUCE THE BOND TO CONCRETE.

- CONCRETE NOTES**
10. ALL CONCRETE WORK SHALL BE IN ACCORDANCE WITH CAN3-A23.1-M90 - CONCRETE MATERIALS AND METHODS OF CONCRETE CONSTRUCTION.
 11. PROPORTION NORMAL DENSITY CONCRETE IN ACCORDANCE WITH CON-A23.1-M90. REFER TO SPECIFICATION FOR DESIGN MIXES.
 12. CONSTRUCT FORMWORK, SHORING AND BRACING TO MEET DESIGN CODE AND CAN3-A23.1-M90 REQUIREMENTS, ACCURATELY, SO THAT RESULTANT FINISHED CONCRETE CONFORMS TO SHAPES, LINES AND DIMENSIONS INDICATED ON THE DRAWINGS.
 13. CONSTRUCTION JOINTS, POUR SCHEDULING AND WORK PROCEDURES SHALL BE DISCUSSED WITH THE CONSULTANT PRIOR TO COMMENCING CONSTRUCTION.
 14. FOR COLD WEATHER CONCRETING ALL ICE, SNOW AND FROST SHALL BE REMOVED FROM FORMWORK AND THE TEMPERATURES OF ALL CONTACT SURFACES SHALL BE RAISED ABOVE 10°C FOR 24 HOURS PRIOR TO CASTING CONCRETE. CONCRETE SHALL BE NOT LESS THAN 20°C NOR MORE THAN 30°C FOR 3 DAYS AND NOT LESS THAN 5°C FOR AN ADDITIONAL 4 DAYS.
 15. NOTIFY THE CONSULTANT 48 HOURS PRIOR TO POURING CONCRETE.

G:\CAD\09-1545\Contract Improvements\091545-PLAN.dwg

150 WM	WATERMAIN	150 WM	HYDRO	HYDRO	HYDRO	150 mm W.M.	WATERMAIN	150 mm W.M.
⊕	HYDRANT VALVE	⊕	MTS	MTS	+	+	HYDRANT VALVE	+
300 LDS	LAND DRAINAGE SEWER	300 LDS			300 mm L.D.S.	300 mm L.D.S.	LAND DRAINAGE SEWER	300 mm L.D.S.
250 WWS	WASTE WATER SEWER	250 WWS			250 mm W.W.S.	250 mm W.W.S.	WASTE WATER SEWER	250 mm W.W.S.
○	MANHOLE	●			- - - -	- - - -	PROFILE	- - - -
□	CATCH BASIN	■			▨	▨	NORTH/WEST GUTTER	▨
▽	CURB INLET	▽			▨	▨	SOUTH/EAST GUTTER	▨
+	JUNCTIONS	+			▨	▨	NORTH/WEST T/LANE	▨
+	CULVERT	+			▨	▨	SOUTH/EAST T/LANE	▨
100 GAS	GAS	100 GAS			▨	▨	PARAPLEGIC RAMP	▨
EXISTING	LEGEND-PLAN	PROPOSED	EXISTING	LEGEND-PLAN	PROPOSED	EXISTING	LEGEND-PROFILE	PROPOSED

UNDERGROUND STRUCTURES

SUPV. U/G STRUCTURES COMMITTEE DATE

NOTE:
LOCATION OF UNDERGROUND STRUCTURES AS SHOWN ARE BASED ON THE BEST INFORMATION AVAILABLE, BUT NO GUARANTEE IS GIVEN THAT ALL EXISTING UTILITIES ARE SHOWN OR THAT THE GIVEN LOCATIONS ARE EXACT. CONFIRMATION OF EXISTENCE AND EXACT LOCATION OF ALL SERVICES MUST BE OBTAINED FROM THE INDIVIDUAL UTILITIES BEFORE PROCEEDING WITH CONSTRUCTION.

B.M. ELEV.	DESIGNED BY	ENGINEER'S SEAL
	TJH	
	DBW	
	DBW	
2	ISSUED FOR TENDER	07-14-09 DBW
1	ISSUED FOR REVIEW	06-12-09 DBW
NO.	REVISIONS	DATE BY

DESIGNED BY	CHECKED BY	APPROVED BY	HOR. SCALE	VERTICAL	RELEASED FOR CONSTRUCTION
TJH	DBW	DBW	AS NOTED		

THE CITY OF WINNIPEG TRANSIT DEPARTMENT

Winnipeg

BUS STOP UPGRADE DETAILS DESIGNED BY MCGOWAN RUSSELL GROUP AND USED BY PERMISSION

ON STREET TRANSIT PRIORITY IMPROVEMENTS - PHASE 3

BUS STOP UPGRADE DETAILS

CITY DRAWING NUMBER: SHEET 10 OF 10

CONSULTANT PROJECT NUMBER: 09-1545

CONSULTANT DRAWING NUMBER