

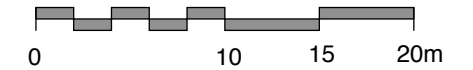


PLANT SPECIFICATION LIST

Qty.	Botanical/ Common Name	Size/Remarks
Deciduous Trees		
4	Acer negundo/ Manitoba Maple	50mm cal., 3.5-4.0 m ht., min. 10 major branches in well-formed head 2.0 m above grade. B&B or tree mover, wire basket.
4	Fraxinus americana 'Jefnor'/ Northern Blaze White Ash	60mm cal., 3.5-4.0 m ht., min. 11 major branches in well-formed head 2.0 m above grade. B&B or tree mover, wire basket.
3	Malus x 'Spring Snow'/ Spring Snow Rosybloom Crabapple	40mm cal., 3.0-3.5 m ht., min. 8 major branches in well-formed head 1.75 m above grade. B&B or tree mover, wire basket.
4	Populus x jaackii 'Northwest'/ Northwest Poplar	60mm cal., 3.5-4.0 m ht., min. 11 major branches in well-formed head 2.0 m above grade. B&B or tree mover, wire basket.
3	Tilia x flavescens 'Glenleven'/ Glenleven Hybrid Linden	60mm cal., 3.5-4.0 m ht., min. 11 major branches in well-formed head 2.0 m above grade. B&B or tree mover, wire basket.
4	Tilia mongolica 'Harvest Gold'/ Harvest Gold Linden	60mm cal., 3.5-4.0 m ht., min. 11 major branches in well-formed head 2.0 m above grade. B&B or tree mover, wire basket.

LEGEND

-  Planting Bed 300mm Depth w/Wood Chip Mulch
-  Topsoil & Sod 75mm Depth Topsoil Limits Shown are Approx. Repair all disturbed turf areas, blend to existing.



No.	Revision	Date

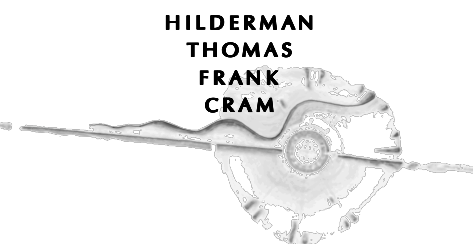
- THIS DRAWING MUST NOT BE SCALED.
- THE GENERAL CONTRACTOR SHALL VERIFY ALL DIMENSIONS, DATUMS AND LEVELS PRIOR TO COMMENCEMENT OF WORK. ALL ERRORS AND OMISSIONS TO BE REPORTED IMMEDIATELY TO THE LANDSCAPE ARCHITECT.
- VARIATIONS & MODIFICATIONS TO WORK SHOWN ON THESE DRAWINGS SHALL NOT BE CARRIED OUT WITHOUT WRITTEN PERMISSION FROM THE LANDSCAPE ARCHITECT.
- THIS DRAWING IS THE EXCLUSIVE PROPERTY OF THE LANDSCAPE ARCHITECTS AND CAN BE REPRODUCED ONLY WITH THE PERMISSION OF THE LANDSCAPE ARCHITECTS, IN WHICH CASE THE REPRODUCTION MUST BEAR THEIR NAME AS LANDSCAPE ARCHITECTS.

FORT GARRY COMMUNITY SKATEPARK Soft Landscaping

Project Title

Sod and Planting Beds

Drawing Title

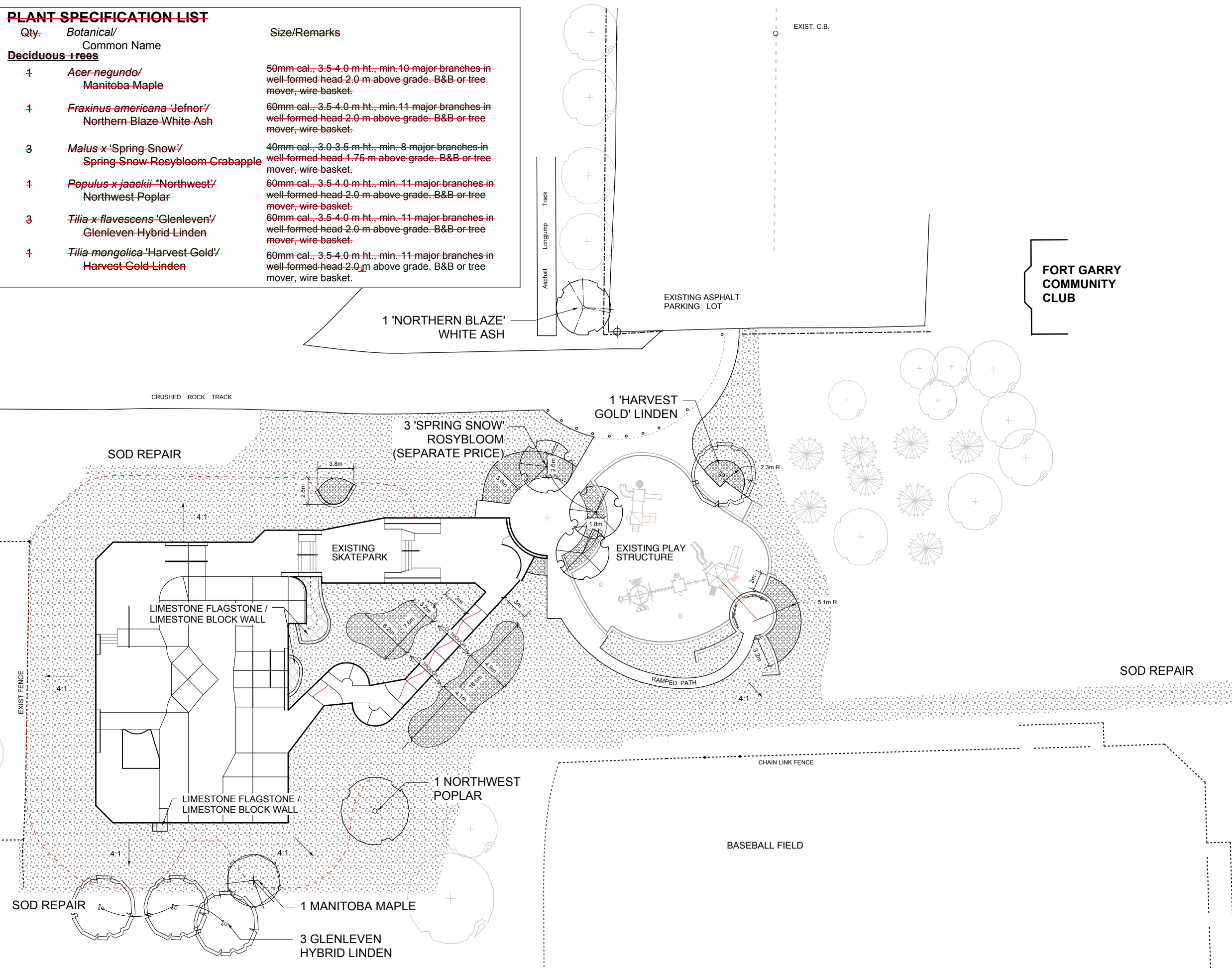


Landscape Architecture • Planning
500-115 Bannatyne Avenue East, Winnipeg, Manitoba R3B 0R3
Telephone: 204-944-9907 Facsimile: 204-957-1467

Drawn SA Approved NJ

Scale 1:400 @ 11x17 Date APRIL 8/09

Job 07 014 Drawing L1



FORT GARRY COMMUNITY CLUB

BASEBALL FIELD