



DEPTH (m)	SAMPLE #	SAMPLER	USCS	SOIL DESCRIPTION	Moisture M.C.		Penetrometer Unconfined Compression (kPa)		ELEV (m)			
					PL	LL	Field	Lab				
					Standard Penetration * Uncorrected Blow Count (N)		Vane Shear Insitu Peak Residual		Laboratory Torvane Disturbed			
					20	40	60	80	20	40	60	80
0.0	ES-1		SP	(0.00 - 0.30) Sand (FILL) - poorly graded, fine grained, loose, damp, dark brown, some gravel, trace clay	o							
			CH	(0.30 - 1.52) CLAY (FILL) - silty, high plastic, firm, moist, dark brown, some sand, trace gravel, trace organic inclusions, trace silt inclusions	o				75°			
1.0	ES-2											
			ML	(1.52 - 2.00) SILT - low plastic, loose, moist, light brown, trace clay, trace oxidation inclusions	o				100°			
2.0	ES-3			- some silt inclusions below 1.37m	o							
	ES-4		CH	(2.00 - 7.62) CLAY - silty, high plastic, stiff, moist, mottled grey and brown, some silt inclusions, trace sand	o							
3.0	ES-5			- soft to firm, trace silt inclusions below 2.6m	o							
	ES-6								50°			
4.0												
	ES-7			- firm, grey below 4.4m	o				75°			
5.0												
	ES-8			- soft below 5.94m	o				40°			
6.0												
7.0	ES-9				o							
END OF HOLE AT 7.62m IN CLAY.												
8.0	<ul style="list-style-type: none"> <li>- Test hole sloughed to 5.3 m below ground surface upon completion of drilling.</li> <li>- Water level measured at 1.4 m below grade two hours after completion of test hole.</li> <li>- Stand pipe piezometer installed adjacent to test hole.</li> <li>- Water level measured in stand pipe (2009 05 29) at 0.9 m below ground surface.</li> </ul>											

PRELIMINARY

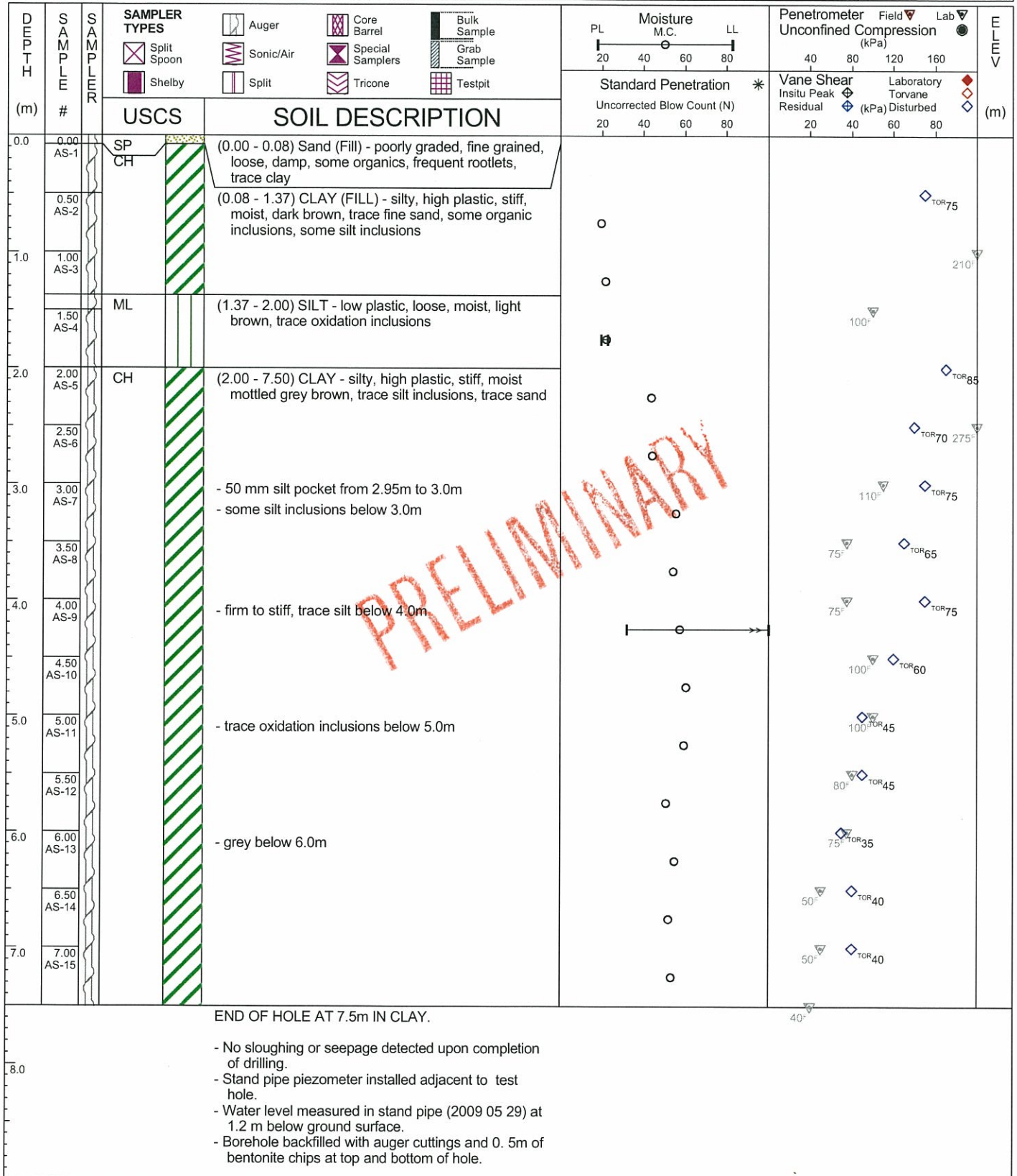
**WATER TABLE**  
Water Level Not Recorded

NORTH:  
EAST:  
TREND: -----  
PLUNGE: -90.0 (deg)  
ELEV G/S:

EQUIPMENT: MP5  
CONTRACTOR: Paddock Drilling  
DRILLER: Gord  
COMPLETION: 2009 05 27  
INSPECTOR: Mark Khan

DEPTH: 7.62 m  
ENGINEER:

MH6 1.032 GDT  
STD\_SOIL\_GEOTECH UCP200  
Printed: 2009/05/05 17:23 CPR MCPHILLIPS ST.GPJ



PRELIMINARY

<b>WATER TABLE</b> Water Level Not Recorded	NORTH: EAST: TREND: ----- PLUNGE: -90.0 (deg) ELEV G/S:	EQUIPMENT: MP5 CONTRACTOR: Paddock Drilling DRILLER: Gord COMPLETION: 2009 05 27 INSPECTOR: Mark Khan	DEPTH: 7.50 m ENGINEER:
--	---	---	----------------------------