

ECCLES STREET

ASHLAND AVENUE

CONSTRUCTION NOTES:

1. ALL PRODUCTS INCORPORATED IN THE WORK SHALL CONFORM TO THE CITY WINNIPEG "STANDARD CONSTRUCTION SPECIFICATIONS" AND BE REGISTERED IN THE CITY OF WINNIPEG LISTING OF APPROVED PRODUCTS OR AS SPECIFIED ON THIS DRAWING. ALL CONSTRUCTION SHALL CONFORM TO THE CITY OF WINNIPEG "STANDARD CONSTRUCTION SPECIFICATIONS", LATEST EDITION.
2. IT IS THE RESPONSIBILITY OF THE CONTRACTOR TO VERIFY THE LOCATIONS OF ALL UTILITIES, PIPES, SURVEY MARKERS, OR STRUCTURES, AND TO NOTIFY ALL RELEVANT UTILITIES PRIOR TO COMMENCEMENT OF CONSTRUCTION. THE CONTRACTOR SHALL NOTIFY THE CONTRACT ADMINISTRATOR OF ANY ERROR OR OMISSION PRIOR TO CONSTRUCTION.
3. IN ACCORDANCE TO THE CITY OF WINNIPEG SURVEY INFRASTRUCTURE PROTECTION PROGRAM, THE CONTRACTOR SHALL NOTIFY THE GEOMATICS BRANCH A MINIMUM 3 DAYS PRIOR TO START OF CONSTRUCTION.
4. DESCRIPTION OF PROPERTY LIMITS, AND EXISTING AND/OR PROPOSED FEATURES RELATIVE TO THESE LIMITS AS SHOWN ON THIS DRAWING DO NOT REPRESENT A LEGAL SURVEY. GENIVAR MAKES NO REPRESENTATION OR GUARANTEE THAT THE PROPERTY LIMIT INFORMATION IS ACCURATE. GENIVAR ACCEPTS NO RESPONSIBILITY FOR DAMAGES, IF ANY, SUFFERED BY ANY THIRD PARTY AS A RESULT OF DECISIONS OR ACTIONS BASED ON THIS DRAWING.
5. ALL AREAS AFFECTED BY CONSTRUCTION TO BE RESTORED TO THE ORIGINAL CONDITION OR BETTER UNLESS NOTED OTHERWISE ON THE DRAWING. ALL REGRADED/DISTURBED SOD AREAS TO RECEIVE TOPSOIL AND SOD UNLESS NOTED OTHERWISE.

RIVERVIEW ASHLAND CHILD CARE (112 ASHLAND AVE.)

RIVERVIEW COMMUNITY CENTRE (90 ASHLAND AVE.)



METRIC
WHOLE NUMBERS INDICATE MILLIMETRES
DECIMALIZED NUMBERS INDICATE METRES

150 mm WM	WATERMAIN	150 mm WM	---	GAS	150 mm WM	WATERMAIN	150 mm WM
○	HYDRANT	●	---	HYDRO	+	HYDRANT	+
⊙	VALVE	⊙	---	M.T.S.	X	VALVE	X
300 mm LDS	LAND DRAINAGE SEWER	300 mm LDS	⊠	PEDESTAL	300 mm LDS	SEWER	300 mm LDS
250 mm CS	WASTE WATER SEWER	250 mm CS	⊠	GROUND ELEVATION	240.00	MANHOLE	240.00
○	MANHOLE	⊠	⊠	PAVEMENT ELEVATION	(240.00)	---	---
□	CATCH BASIN	■	⊠	PROPERTY LINE	---	---	---
△	CURB INLET	⊠	⊠	SURVEY BAR	---	---	---
▽	SIGN	⊠	⊠	CURB STOP	---	---	---
○	LAMP STANDARD	⊠	⊠	TESTHOLE	---	---	---
•	UTILITY POLE	⊠	⊠	---	---	---	---
EXISTING	LEGEND - PLAN	PROPOSED	EXISTING	LEGEND - PLAN	PROPOSED	EXISTING	LEGEND - PROFILE

LOCATION APPROVED UNDERGROUND STRUCTURES

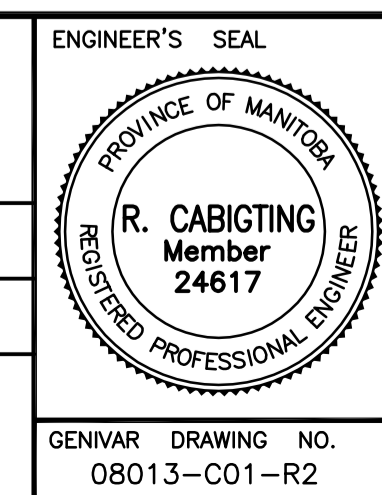
SUPV. U/G STRUCTURES COMMITTEE DATE

NOTE:
LOCATION OF UNDERGROUND STRUCTURES AS SHOWN ARE BASED ON THE BEST INFORMATION AVAILABLE BUT NO GUARANTEE IS GIVEN THAT ALL EXISTING UTILITIES ARE SHOWN OR THAT THE GIVEN LOCATIONS ARE EXACT. CONFIRMATION OF EXISTENCE AND EXACT LOCATION OF ALL SERVICES MUST BE OBTAINED FROM THE INDIVIDUAL UTILITIES BEFORE PROCEEDING WITH CONSTRUCTION.

C.W.B.M. 53-027..... 230.243m
S.E. CORNER OF ASHLAND AVE. & ECCLES ST., TBLT.
IN N. CONG. FOUNDATION OF No. 90 ASHLAND AVE.,
0.7 m W. & 0.1 m BELOW STUCCO FROM N.E.
CORNER OF BUILDING.

GENIVAR
10 PRAIRIE WAY WINNIPEG, MANITOBA R2J 3J8
PH: (204)-477-8650 FAX: (204)-474-2864

DESIGNED BY R.C.	CHECKED BY D.T.B.
DRAWN BY R.C.	APPROVED BY B.D.E.
HOR. SCALE: 1:150	RELEASED FOR CONSTRUCTION
VERT. SCALE:	DATE
ISSUED FOR TENDER NO. REVISIONS	DATE BY



THE CITY OF WINNIPEG
PLANNING, PROPERTY & DEVELOPMENT DEPARTMENT

**RIVERVIEW COMMUNITY CENTRE
PARKING LOT & DRAINAGE IMPROVEMENT PROJECT**

EXISTING SITE/DEMOLITION PLAN

CITY DRAWING NO. 276-2009-C01
SHEET 1 OF 2
REV. 1 0

GENIVAR DRAWING NO. 08013-C01-R2