

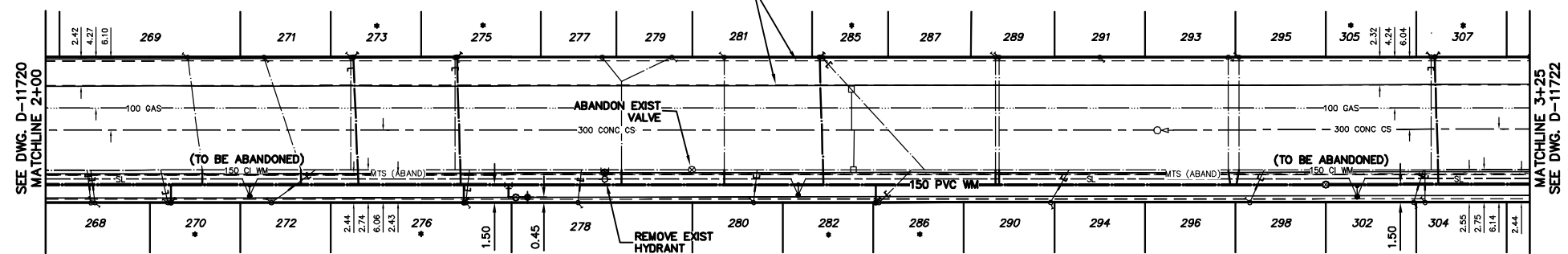
- CONSTRUCTION NOTES**
1. EXPOSE EXISTING WATERMAIN & CONFIRM INVERTS PRIOR TO CONSTRUCTION.
 2. CONFIRM LOCATION OF ALL SERVICES IN THE FIELD.
 3. INSTALL WATERMAIN BY TRENCHLESS METHODS.
 4. TRENCHES AND EXCAVATIONS WITHIN 1 METRE OF A PAVED AREA INCLUDING SIDEWALKS SHALL BE CLASS 3 BACKFILL.
 5. ALL MATERIALS SHALL CONFORM TO THE CITY OF WINNIPEG STANDARD CONSTRUCTION SPECIFICATIONS.
 6. MINIMUM COVER TO TOP OF WATERMAIN SHALL BE 2.4 m.
 7. REPLACE ALL EXISTING LEAD SERVICES FROM PROPOSED WATERMAIN TO E.
 8. NOTIFY ALL AFFECTED RESIDENTS AND BUSINESSES 24 HOURS IN ADVANCE OF ANY WATER SHUTDOWNS OR DISRUPTION OF SERVICE.

WATER SERVICE INFORMATION					
ADDRESS	SIZE(mm) & TYPE (STREET)	SIZE(mm) & TYPE (PROP)	SHORT & LONG MEASUREMENT	CORP. LOCATION	REMARKS
268 HARBISON AVE RESIDENTIAL	20 COPPER	12 LEAD	3.74 WEL HSE 104.11 EEL BRAZIER	0.3 W OF S/C	RECONNECT SERVICE
269 HARBISON AVE RESIDENTIAL	20 COPPER	12 LEAD	2.15 WEL HSE 111.89 EEL BRAZIER	1.2 E OF S/C	RECONNECT SERVICE
270 HARBISON AVE RESIDENTIAL	12 COPPER	20 LEAD	0.75 WEL HSE 110.15 EEL BRAZIER	0.6 W OF S/C	RENEW TO R W/20 COPPER
271 HARBISON AVE RESIDENTIAL	20 COPPER	12 LEAD	0.31 WEL HSE 118.39 EEL BRAZIER	3.1 E OF S/C	RECONNECT SERVICE
272 HARBISON AVE RESIDENTIAL	20 COPPER	20 COPPER	1.73 WEL HSE 119.08 EEL BRAZIER	3.6 E OF S/C	RECONNECT SERVICE
273 HARBISON AVE RESIDENTIAL	12 COPPER	12 LEAD	0.64 WEL HSE 125.79 EEL BRAZIER	OPP S/C	RENEW TO R W/20 COPPER
275 HARBISON AVE RESIDENTIAL	12 LEAD	12 LEAD	2.10 WEL HSE 134.48 EEL BRAZIER	OPP S/C	RENEW TO R W/20 COPPER
276 HARBISON AVE RESIDENTIAL	12 LEAD	12 LEAD	1.84 WEL HSE 135.37 EEL BRAZIER	0.3 E OF S/C	RENEW TO R W/20 COPPER
277 HARBISON AVE RESIDENTIAL	20 COPPER	12 LEAD	0.61 WEL HSE 146.79 EEL BRAZIER	1.6 E OF S/C	DBL. SERV. W/279 RECONNECT SERVICE
278 HARBISON AVE RESIDENTIAL	20 COPPER	20 COPPER	2.79 WEL HSE 144.72 EEL BRAZIER	0.3 E OF S/C	RECONNECT SERVICE
279 HARBISON AVE RESIDENTIAL	20 COPPER	20 COPPER	3.98 WEL HSE 152.71 EEL BRAZIER	4.2 W OF S/C	DBL. SERV. W/277 RECONNECT SERVICE
280 HARBISON AVE RESIDENTIAL	20 COPPER	12 LEAD	4.37 WEL HSE 159.81 EEL BRAZIER	0.4 E OF S/C	RECONNECT SERVICE
281 HARBISON AVE RESIDENTIAL	20 COPPER	12 LEAD	2.14 WEL HSE 157.21 EEL BRAZIER	OPP S/C	RECONNECT SERVICE
282 HARBISON AVE RESIDENTIAL	16 COPPER	12 LEAD	6.87 WEL HSE 170.18 EEL BRAZIER	2.8 E OF S/C	DBL. SERV. W/286 RECONNECT SERVICE
285 HARBISON AVE RESIDENTIAL	16 COPPER	20 LEAD	OPP WL HSE 133.73 WML ROOF	8.6 E OF S/C	RENEW TO R W/20 COPPER
286 HARBISON AVE RESIDENTIAL	16 COPPER	12 LEAD	1.19 WML HSE 170.18 EEL BRAZIER	2.8 E OF S/C	DBL. SERV. W/282 RECONNECT SERVICE
287 HARBISON AVE RESIDENTIAL	20 COPPER	20 COPPER	8.30 WEL HSE 119.17 WML ROOF	OPP S/C	RECONNECT SERVICE
289 HARBISON AVE RESIDENTIAL	20 COPPER	20 COPPER	8.81 WEL HSE 118.88 WML ROOF	OPP S/C	RECONNECT SERVICE
290 HARBISON AVE RESIDENTIAL	20 COPPER	12 LEAD	5.31 WEL HSE 114.14 WML ROOF	1.6 E OF S/C	DBL. SERV. W/294 RECONNECT SERVICE
291 HARBISON AVE RESIDENTIAL	20 COPPER	12 LEAD	114.14 WML ROOF	1.2 E OF S/C	RECONNECT SERVICE
293 HARBISON AVE RESIDENTIAL	20 COPPER	20 COPPER	2.26 WEL HSE 110.10 WML ROOF	OPP S/C	RECONNECT SERVICE
294 HARBISON AVE RESIDENTIAL	20 COPPER	12 LEAD	5.45 WEL HSE 99.53 WML ROOF	OPP S/C	RECONNECT SERVICE
295 HARBISON AVE RESIDENTIAL	20 COPPER	12 LEAD	1.61 WML HSE 114.14 WML ROOF	1.6 E OF S/C	DBL. SERV. W/290 RECONNECT SERVICE
296 HARBISON AVE RESIDENTIAL	20 COPPER	12 LEAD	1.51 WML HSE 89.88 WML ROOF	OPP S/C	RECONNECT SERVICE
298 HARBISON AVE RESIDENTIAL	20 COPPER	12 LEAD	1.71 EEL HSE 97.80 WML ROOF	1.2 E OF S/C	DBL. SERV. W/298 RECONNECT SERVICE
299 HARBISON AVE RESIDENTIAL	20 COPPER	12 LEAD	1.09 WML HSE 97.80 WML ROOF	1.2 E OF S/C	DBL. SERV. W/296 RECONNECT SERVICE
300 HARBISON AVE RESIDENTIAL	20 COPPER	12 LEAD	0.30 EEL HSE 83.96 WML ROOF	0.8 E OF S/C	RECONNECT SERVICE
302 HARBISON AVE RESIDENTIAL	20 COPPER	20 COPPER	0.50 WEL HSE 83.02 WML ROOF	OPP S/C	RECONNECT SERVICE
303 HARBISON AVE RESIDENTIAL	16 COPPER	12 LEAD	7.31 WEL HSE 82.53 WML ROOF	OPP S/C	DBL. SERV. W/307 RECONNECT SERVICE
307 HARBISON AVE RESIDENTIAL	16 COPPER	20 LEAD	OPP WL HSE 82.53 WML ROOF	OPP S/C	DBL. SERV. W/305 RECONNECT SERVICE

NOTE: CHAINAGES SHOWN ARE ALONG S R OF HARBISON AVE

CAUTION: GAS ON N SIDE OF HARBISON AVE

HARBISON AVENUE (WEST)



CAUTION: SL ON S SIDE OF HARBISON AVE

* SERVICES TO BE RENEWED TO R UPON CONFIRMATION BY THE CONTRACTOR OF EXISTING LEAD SERVICE. OBTAIN APPROVAL FROM CONTRACT ADMINISTRATOR PRIOR TO RENEWAL.

METRIC
WHOLE NUMBERS INDICATE MILLIMETRES
DECIMALIZED NUMBERS INDICATE METRES

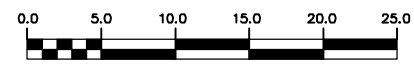
NOTE: ALL VALVES TO BE INSTALLED COUNTERCLOCKWISE TO CLOSE

WARNING

IF POWER EQUIPMENT OR EXPLOSIVES ARE TO BE USED FOR EXCAVATION ON THIS PROJECT THE CONTRACTOR MUST:

- 1) NOTIFY THE GAS COMPANY OF THE PROPOSED LOCATION OF EXCAVATION.
- 2) TAKE PRECAUTION TO AVOID DAMAGE TO GAS COMPANY INSTALLATIONS.

SEE PROVINCIAL REGULATION 210/72 FOR DETAILS



200 WM	WATERMAIN	200 WM	SL, HYDRO	150 WM	WATERMAIN	150 WM
⊕	HYDRANT	⊕	MTS	⊕	HYDRANT	⊕
⊙	VALVE	⊙	TRAFFIC SIGNALS	⊙	VALVE	⊙
525 LDS	LAND DRAINAGE SEWER	525 LDS	GAS	50 GAS	300 LDS	LAND DRAINAGE SEWER
375 WWS	WASTEWATER SEWER	375 WWS	SURVEY BAR	250 WWS	WASTEWATER SEWER	250 WWS
○	MANHOLE	●	FENCE	⊖	PROFILE	⊖
□	CATCH BASIN	■	POLE - HYDRO, MTS	⊖	GROUND ABOVE PIPE	⊖
▽	CURB INLET	▽	CURB STOP	⊖	⊖ DITCH (NORTH & WEST)	⊖
∇	REDUCER	∇	GUY ANCHOR	⊖	⊖ DITCH (SOUTH & EAST)	⊖
X	COUPLER	X	LIGHT STANDARD	⊖	⊖ GUTTER (NORTH & WEST)	⊖
⊖	ANODE	⊖	TREE	⊖	⊖ GUTTER (SOUTH & EAST)	⊖
EXISTING	LEGEND-PLAN	PROPOSED	EXISTING	LEGEND-PLAN	PROPOSED	EXISTING

LOCATION APPROVED UNDERGROUND STRUCTURES

SUPV. U/G STRUCTURES COMMITTEE DATE

NOTE: LOCATION OF UNDERGROUND STRUCTURES AS SHOWN ARE BASED ON THE BEST INFORMATION AVAILABLE BUT NO GUARANTEE IS GIVEN THAT ALL EXISTING UTILITIES ARE SHOWN OR THAT THE GIVEN LOCATIONS ARE EXACT. CONFIRMATION OF EXISTENCE AND EXACT LOCATION OF ALL SERVICES MUST BE OBTAINED FROM THE INDIVIDUAL UTILITIES BEFORE PROCEEDING WITH CONSTRUCTION.

B.M. ELEV.	FIELD BOOK #:
POSTED TO LBS	
NO. REVISIONS	DATE BY

CITY OF WINNIPEG WATER AND WASTE ENGINEERING DIVISION

DESIGNED BY: NC CHECKED BY: NC

DRAWN BY: C/JH APPROVED BY: KZ

HOR. SCALE: 1:250
VERTICAL: 1:50

RELEASED FOR CONSTRUCTION

DATE: 2009 03 12 DATE:

ENGINEER'S SEAL

ORIGINAL SIGNED BY: K.R. ZUREK 09/03/12

BID OPPORTUNITY 196-2009
FILENAME: D-11721.dwg
PLOT DATE: 2009 03 13

THE CITY OF WINNIPEG WATER AND WASTE DEPARTMENT

2009 WATERMAIN RENEWALS CONTRACT 4
HARBISON AVENUE (WEST)
100 E OF BRAZIER STREET TO 75 W OF ROCH STREET

SHEET 4 OF 10
CITY DRAWING NUMBER: D-11721