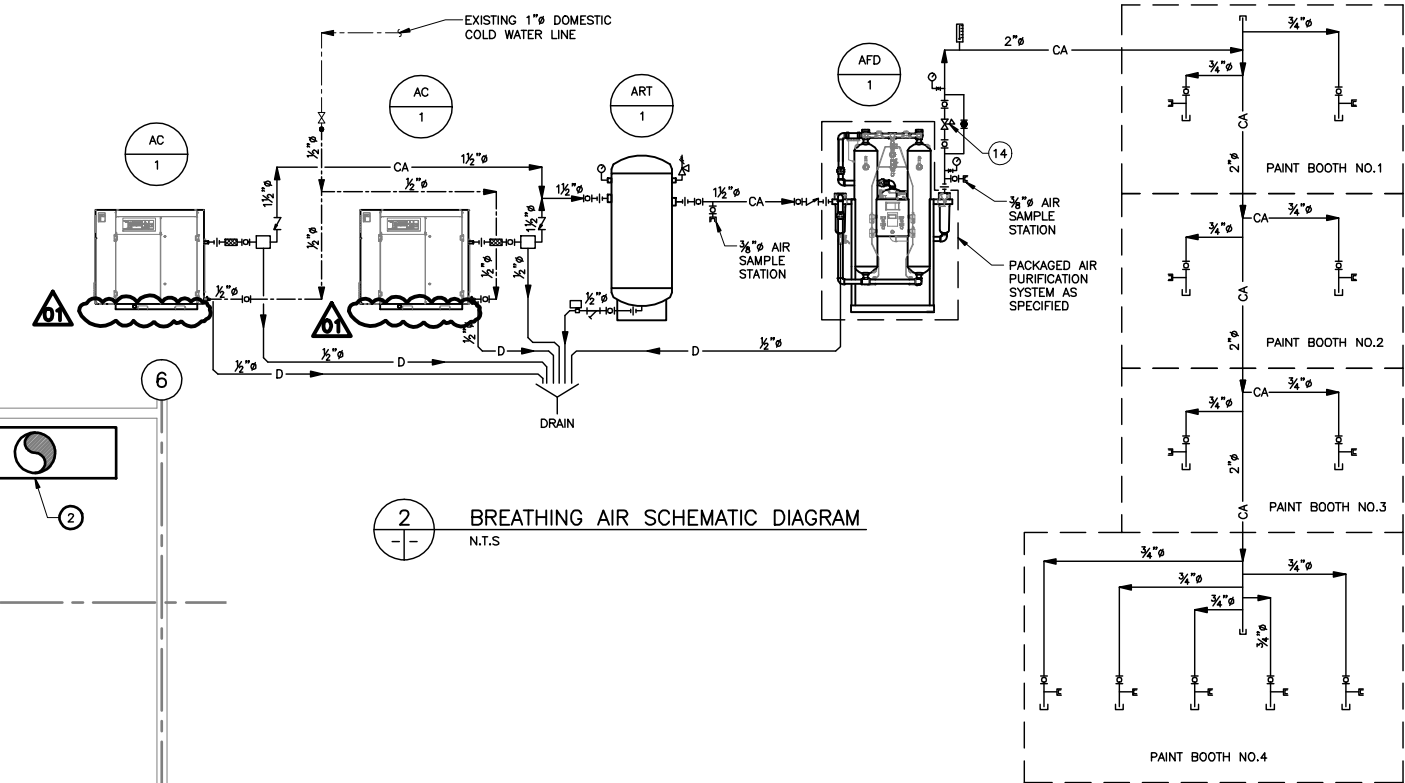


1
--
PARTIAL MAIN FLOOR PLAN
1/8" = 1'-0"



2
--
BREATHING AIR SCHEMATIC DIAGRAM
N.T.S.

GENERAL NOTES:

- DIMENSIONS ARE IN INCHES UNLESS NOTED OTHERWISE.
- CONTRACTOR SHALL FIELD VERIFY ALL DIMENSIONS AND ELEVATIONS PRIOR TO INSTALLATION.
- PROVIDE 2% SLOPE IN DIRECTION OF FLOW ON NEW COMPRESSOR DRAIN LINES.

DRAWING NOTES:

- AFTER THE COMPLETE INSTALLATION AND COMMISSIONING OF THE NEW BREATHING AIR SYSTEM, REMOVE EXISTING BREATHING AIR COMPRESSOR UNITS INCLUDING INTAKE AIR AND SUPPLY PIPING, COMPRESSOR WALL SUPPORTS AND CONTROL PANEL. PATCH AND SEAL INTAKE AIR PIPE OPENING ON ROOF AND PATCH ALL WALL PIPE PENETRATIONS.
- EXISTING WATER WASH PAINT BOOTH EXHAUST.
- EXISTING AIR RECEIVER TANK.
- EXISTING FLOOR DRAIN.
- CONNECT NEW 1/2" DOMESTIC COLD WATER LINE APPROXIMATELY THIS LOCATION FROM THE EXISTING 1" DCW LINE. INSULATE MAIN LINE TAPPING POINT WITH FIBERGLAS AND WITH THE SAME THICKNESS AS EXISTING.
- EXISTING PLANT AIR COMPRESSOR.
- EXISTING REFRIGERATED AIR DRYER.
- EXISTING GUARDRAIL TO REMAIN.
- REMOVE AND REINSTALL EXISTING GUARDRAIL. RELOCATE TO NEW LOCATION. SEE DRAWING NOTE 10.
- NEW LOCATION OF GUARDRAIL.
- 1/2" DOMESTIC COLD WATER LINE TO SERVE WATER-INJECTED AIR COMPRESSOR UNITS.
- BREATHING AIR HOSE CONNECTING STATION C/W BALL VALVE AND QUICK-CONNECT COUPLING.
- PATCH ALL WALL PIPE PENETRATIONS.
- FISHER MODEL 95H-209 PRESSURE REDUCING VALVE. 125 PSI NOMINAL INLET PRESSURE AND 5-80 PSIG ADJUSTABLE OUTLET PRESSURE.

LEGEND

- CA — COMPRESSED AIR LINE
- D — DRAIN LINE
- DCW — DOMESTIC COLD WATER LINE
- — BALL VALVE
- ∇ — CHECK VALVE
- ∩ — PRESSURE REDUCING VALVE
- ⊥ — AUTO DRAIN
- ⊥ — PRESSURE RELIEF VALVE
- ⊥ — PRESSURE GAUGE
- ⊥ — CAP
- ⊥ — FLEXIBLE PIPE CONNECTION
- ⊥ — QUICK-CONNECT COUPLING
- ⊥ — THERMOMETER

01	ISSUED FOR ADDENDUM #1	08.10.23	LS
00	ISSUED FOR TENDER	08.10.09	LS
NO.	DESCRIPTION	DATE	ISSUED BY

REVISIONS/ISSUE
 THE CONTENT OF THIS DOCUMENT IS NOT INTENDED FOR THE USE OF, NOR IS IT INTENDED TO BE RELIED UPON BY ANY PERSON, FIRM OR CORPORATION, OTHER THAN THE CLIENT AND WARDROP ENGINEERING INC. WARDROP ENGINEERING INC. AND WARDROP ENGINEERING INC. ACCEPTS NO LIABILITY WHATSOEVER TO OTHER PARTIES FOR DAMAGES OR INJURY SUFFERED BY SUCH THIRD PARTY ARISING FROM USE OF THIS DOCUMENT BY THEM. WITHOUT THE EXPRESS PRIOR WRITTEN AUTHORITY OF WARDROP ENGINEERING AND OUR CLIENT, THIS DOCUMENT IS SUBJECT TO FURTHER RESTRICTIONS IMPOSED BY THE CONTRACT BETWEEN THE CLIENT AND WARDROP ENGINEERING INC. AND THESE PARTIES' PERMISSION MUST BE SOUGHT REGARDING THIS DOCUMENT IN ALL OTHER CIRCUMSTANCES.

**CITY OF WINNIPEG
TRANSIT DEPARTMENT**

WARDROP | Engineering Inc.

PROJECT NAME
**WINNIPEG TRANSIT - OSBORNE STREET GARAGE
PAINT BOOTH BREATHING AIR SYSTEM UPGRADE**

DRAWING DESCRIPTION
**PARTIAL MAIN FLOOR PLAN
AND SCHEMATIC
COMPRESSED BREATHING AIR**

PRELIMINARY DRAWING	DESIGNED BY: WGN/LS	DRAWN BY: WGN	CHECKED BY: LS
	APPROVED BY: AR		
NOT TO BE USED FOR CONSTRUCTION	SCALE: AS NOTED	DATE: 08.03.20	
	DRAWING NO. 0829720102-DWG-M0001	REV. 01	



1/8" = 1'-0" 5 0 5 10ft.