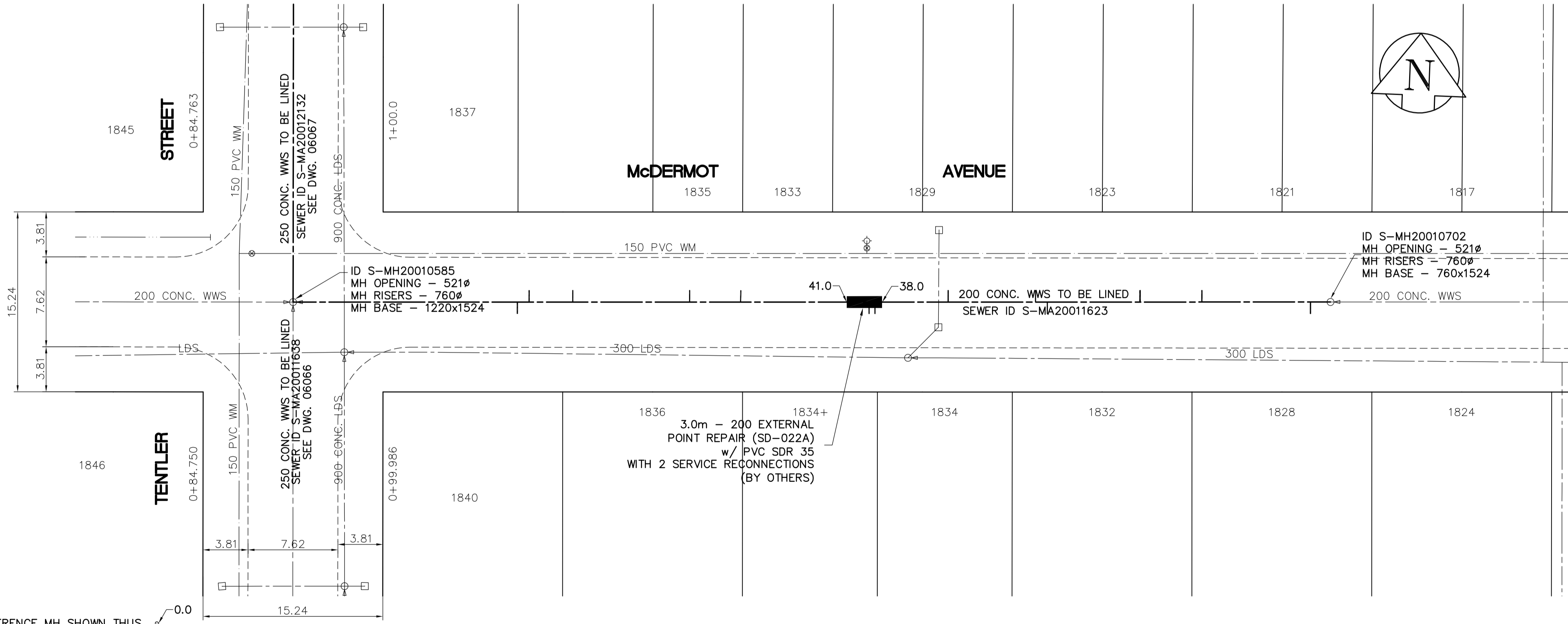


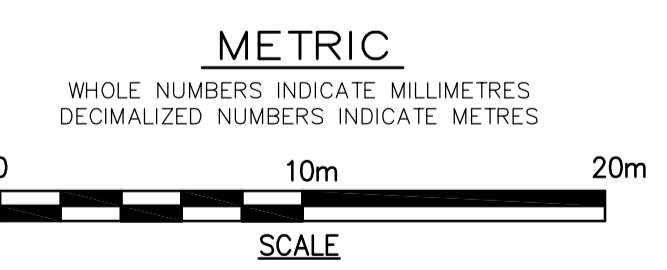
NOTE: CHAINAGES SHOWN ARE ALONG THE N R OF McDERMOT

SEWER JUNCTION INFORMATION FROM VIDEO INSPECTION S-MA2001633	
DISTANCE FROM S-MH20010702	
1.7m WEST - 100mm CONNECTION SOUTH	
10.9m WEST - 100mm INTRUDING CONNECTION NORTH	
16.1m WEST - 100mm CONNECTION NORTH	
24.0m WEST - 150mm CONNECTION SOUTH	
25.0m WEST - 150mm CONNECTION NORTH	
32.4m WEST - 100mm INTRUDING CONNECTION NORTH	
38.6m WEST - 150mm CONNECTION SOUTH	
39.1m WEST - 100mm INTRUDING CONNECTION SOUTH	
DISTANCE FROM S-MH20010585	
19.0m EAST - 100mm INTRUDING CONNECTION SOUTH	
20.0m EAST - 100mm INTRUDING CONNECTION NORTH	
23.7m EAST - 100mm CONNECTION NORTH	
33.6m EAST - 100mm CONNECTION NORTH	
37.9m EAST - 100mm CONNECTION NORTH	
23m-48m - POOR VISIBILITY, UNABLE TO CONFIRM CONDITION OF SEWER	



LEGEND  
 -52.0 MEASUREMENT TO REPAIR FROM REFERENCE MH SHOWN THUS...  
 - TO BE LINED

**APCGM**  
 Certificate of Authorization  
 Earth Tech Canada Inc.  
 No. 730 Expiry: April 30, 2008



EXISTING	LEGEND - PLAN	PROPOSED	EXISTING	LEGEND - PLAN	PROPOSED	EXISTING	LEGEND - PROFILE	PROPOSED
	WATERMAIN			HYDRO TELEPHONE			WATERMAIN HYDRANT	
	HYDRANT VALVE			LAND DRAINAGE SEWER			LAND DRAINAGE SEWER	
	WASTEWATER SEWER			WASTEWATER SEWER			WASTEWATER SEWER	
	MANHOLE			CATCH BASIN			CURB INLET	
	JUNCTIONS			CULVERT			GAS	
	SURVEY BAR			PROPERTY LINE			TREE	
	CURB STOP			CONCRETE SIDEWALK			FENCE	

LOCATION APPROVED UNDERGROUND STRUCTURES  
 SUPV. U/G STRUCTURES DATE COMMITTEE  
 NOTE:  
 LOCATION OF UNDERGROUND STRUCTURES AS SHOWN ARE BASED ON THE BEST INFORMATION AVAILABLE, BUT NO GUARANTEE IS GIVEN THAT ALL EXISTING UTILITIES ARE SHOWN OR THAT THE GIVEN LOCATIONS ARE EXACT. CONFIRMATION OF EXISTENCE AND EXACT LOCATION OF ALL SERVICES MUST BE OBTAINED FROM THE INDIVIDUAL UTILITIES BEFORE PROCEEDING WITH CONSTRUCTION.

NO.	REVISIONS	DATE	BY
B	ISSUED FOR TENDER	2007/07/19	DA
A	ISSUED FOR REVIEW	2007/07/17	PL

**EARTH TECH**  
 A tyco INTERNATIONAL LTD. COMPANY  
 Earth Tech (Canada) Inc. Winnipeg, Manitoba 204-477-5381

DESIGNED BY: PL	CHECKED BY: GSK
DRAWN BY: GDL	APPROVED BY:
HOR. SCALE: 1:250	RELEASED FOR CONSTRUCTION BY: K. ZUREK
VERTICAL SCALE: 1:50	DATE: 2007/04/11
DATE: 2007/07/19	DATE: 2007/07/19

ENGINEER'S SEAL  
 PROVINCE OF MANITOBA  
 ORIGINAL SIGNED BY  
**K.W. FITCHETT**  
 2007/07/19  
 REGISTERED PROFESSIONAL ENGINEER  
 CONSULTANT DRAWING NO. 99943-C03

**THE CITY OF WINNIPEG**  
 Winnipeg WATER AND WASTE DEPARTMENT

**2007 SEWER RENEWAL BY CIPP LINING**

McDERMOT AVENUE  
 1st M.H. W of BECKER ST  
 TO M.H. at TENTLER ST

SHEET 3 OF 12  
 CITY DRAWING NUMBER 06059