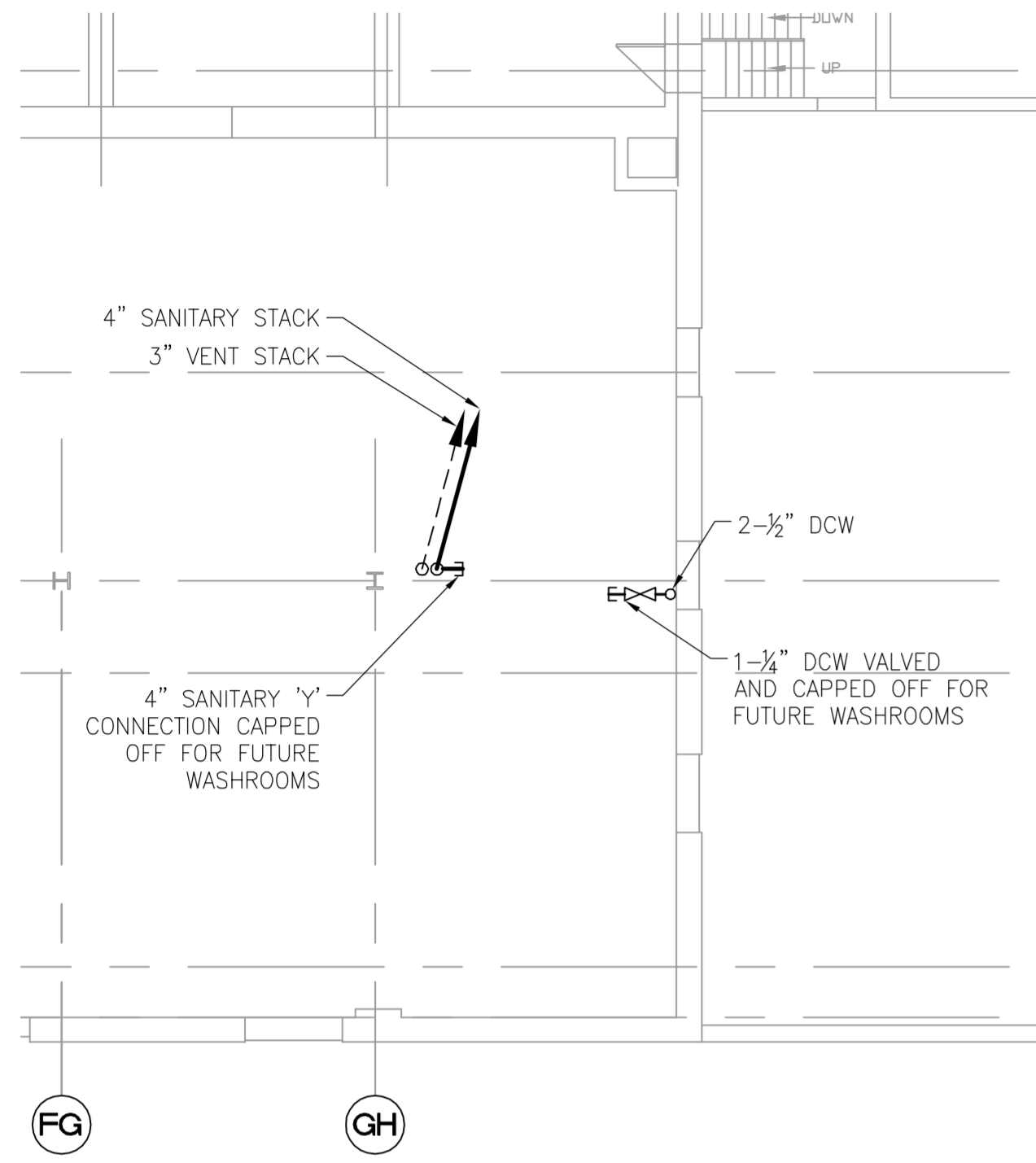
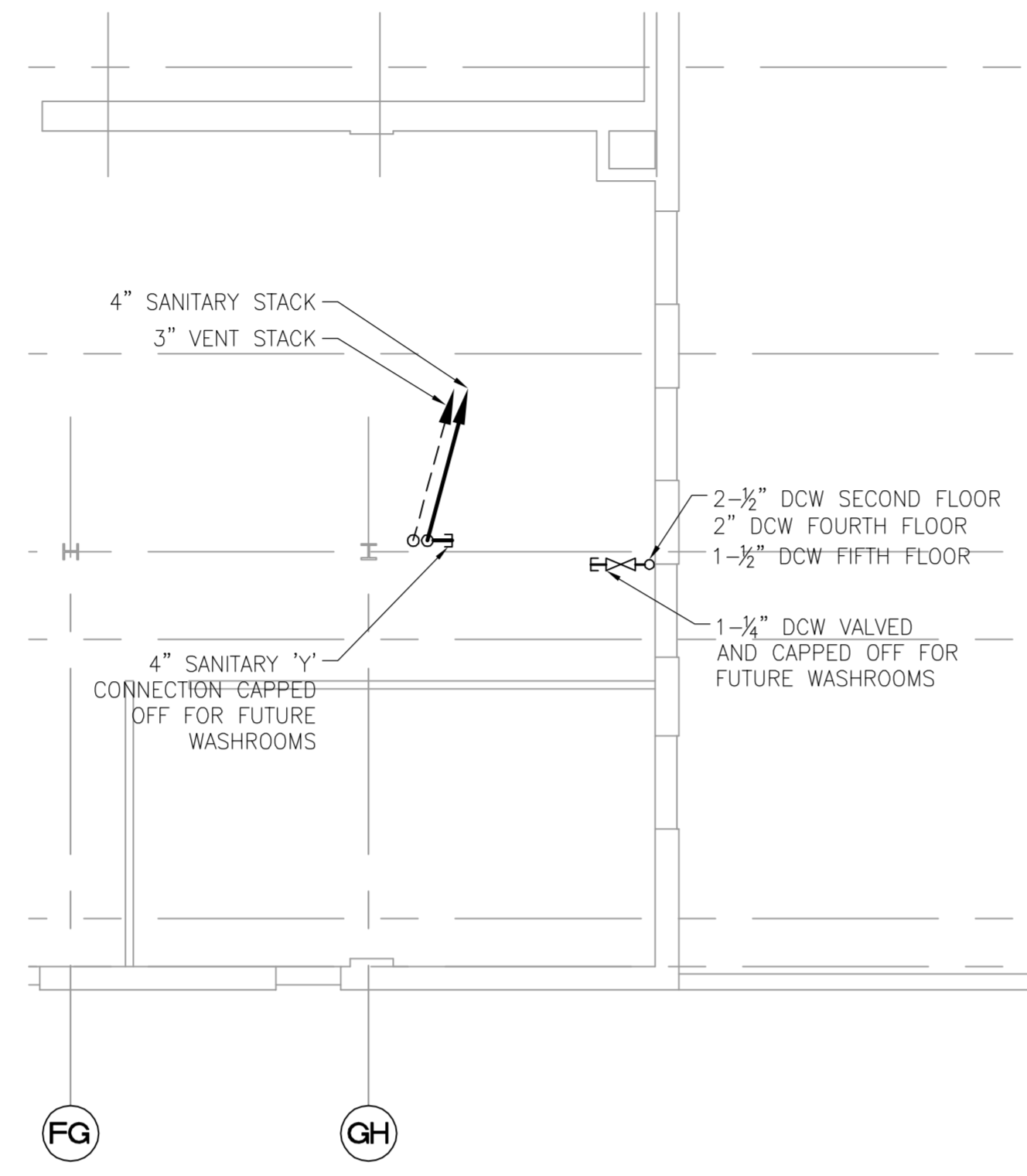


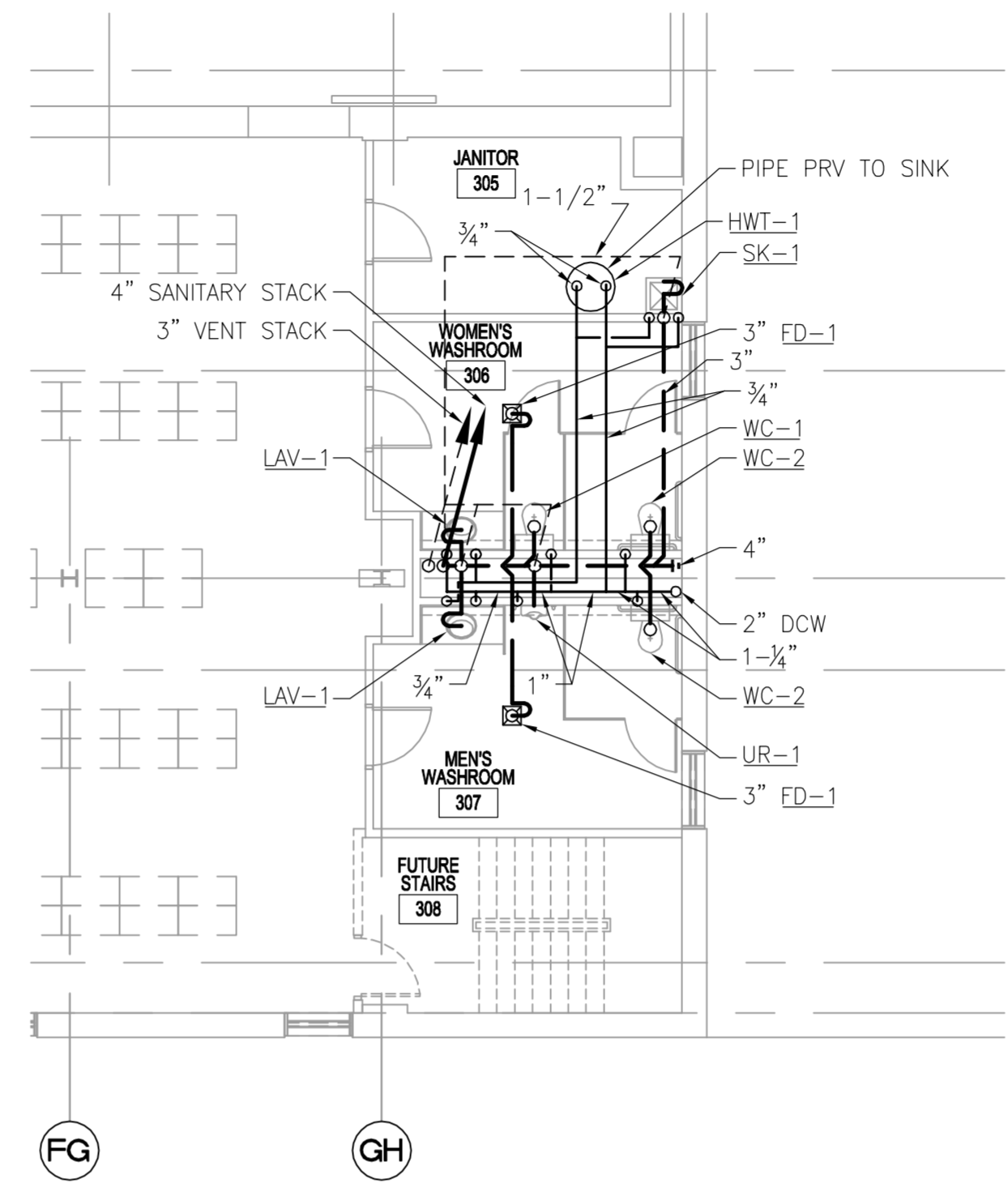
FILE NAME: DATE: DESCRIPTION: PROJECT No: ADDRESS:



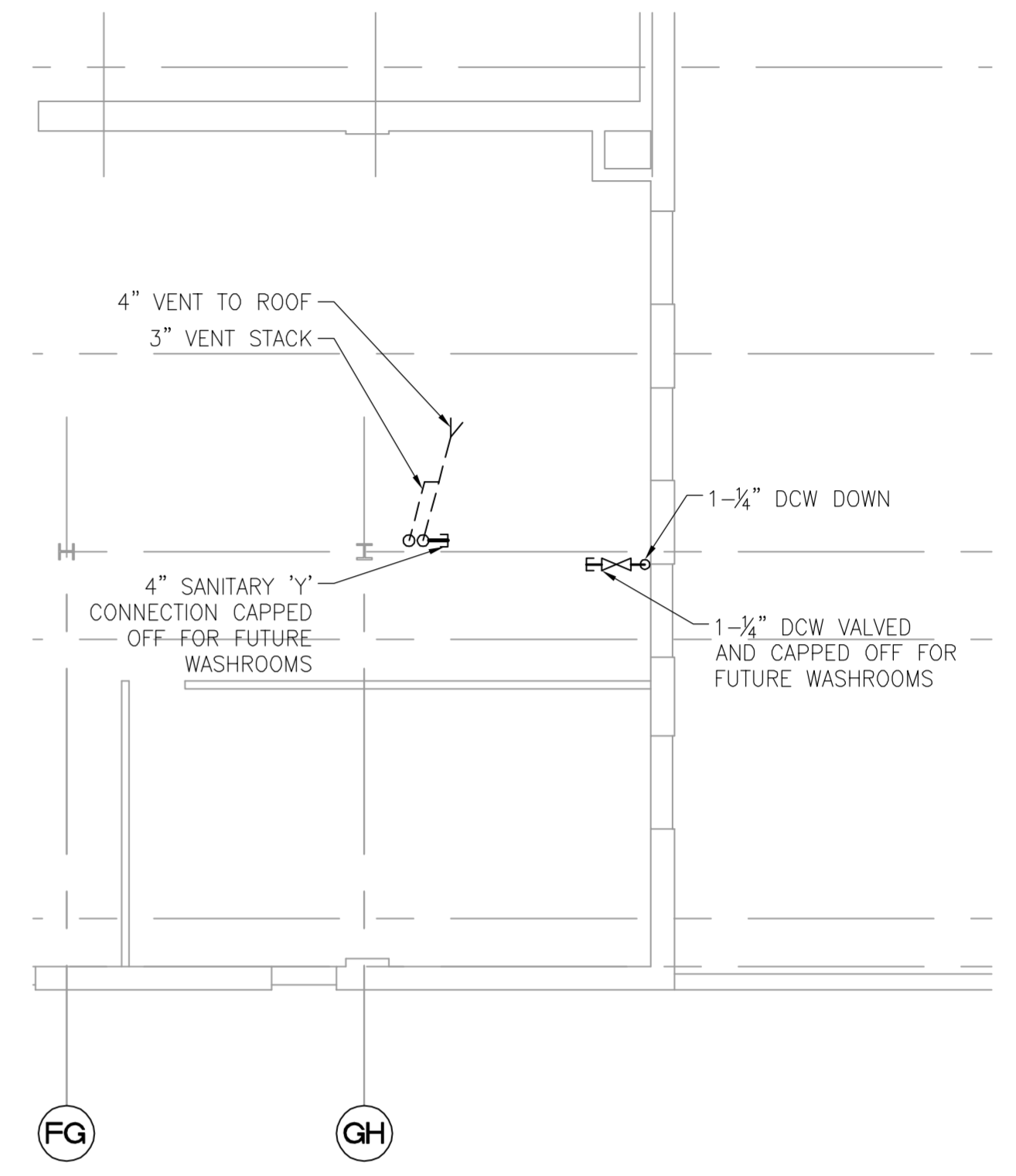
1 PARTIAL MAIN FLOOR PLAN
M-1.1 SCALE: 1/8" = 1'-0"



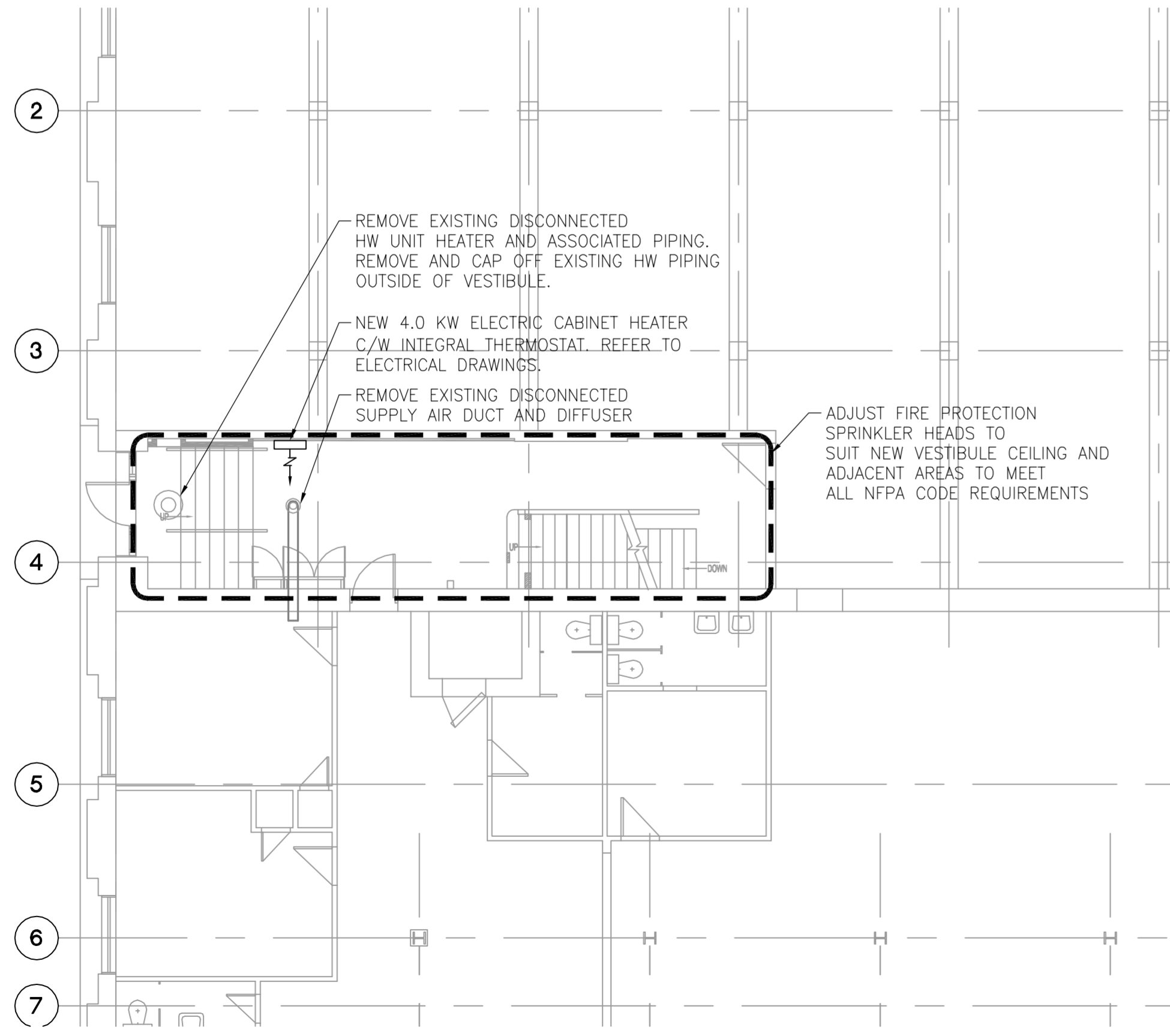
2 PARTIAL TYPICAL FLOOR PLAN
M-1.1 SCALE: 1/8" = 1'-0"



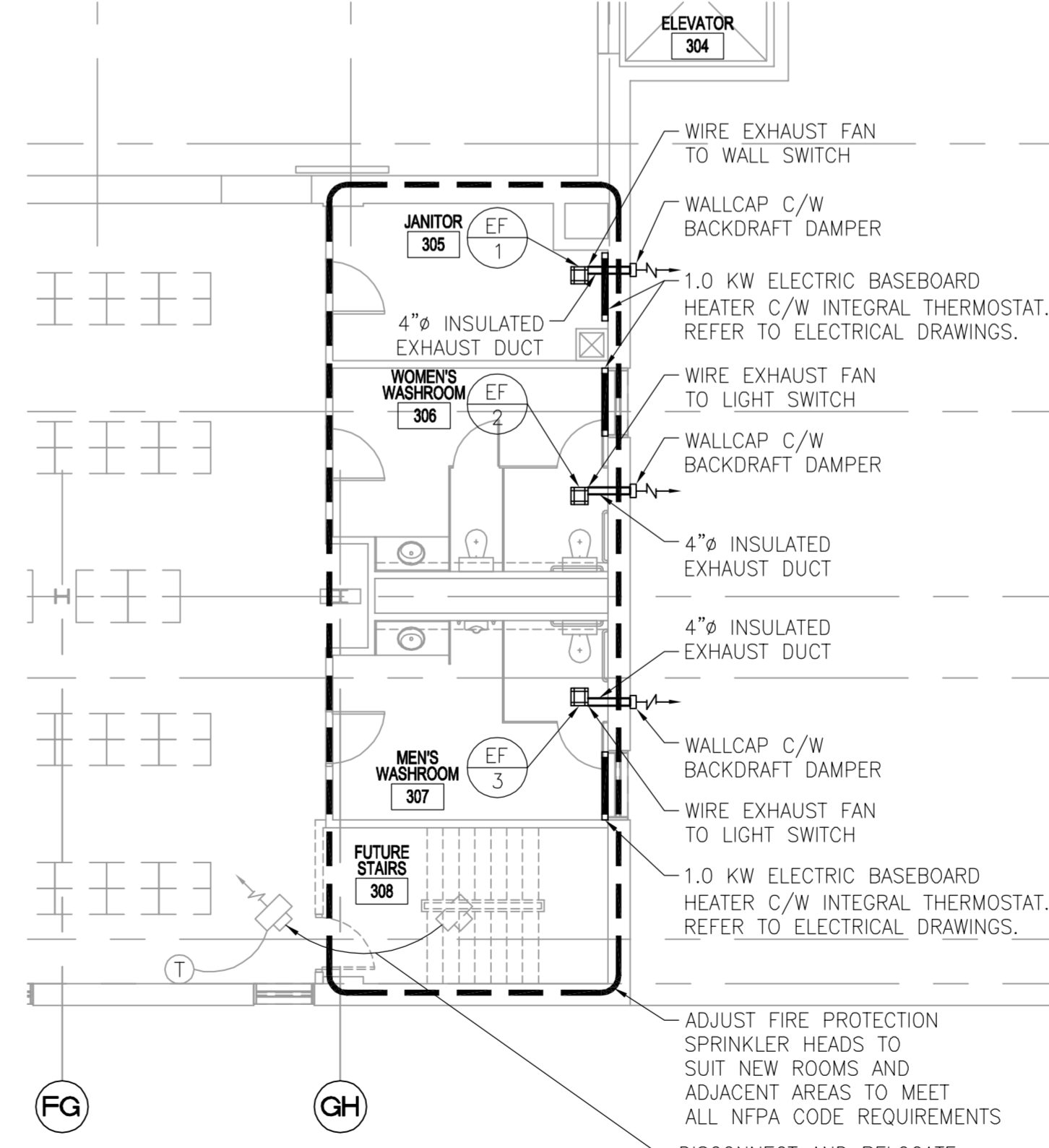
3 PARTIAL THIRD FLOOR PLAN
M-1.1 SCALE: 1/8" = 1'-0"



4 PARTIAL SIXTH FLOOR PLAN
M-1.1 SCALE: 1/8" = 1'-0"



5 PARTIAL MAIN FLOOR PLAN
M-1.1 SCALE: 1/8" = 1'-0"



6 PARTIAL THIRD FLOOR PLAN
M-1.1 SCALE: 1/8" = 1'-0"

ORIGINAL STAMPED BY: M.H. DATE: 11/30/06			
1	ISSUED FOR TENDER	11/30/06	LJR
NO.	REVISION/DESCRIPTION	DATE	BY

DRAWN BY	LJR	CHECKED BY	LJR	APPROVED BY	MH
DATE	11/30/06	USER APPROVAL			

CONSULTANT
These design documents are prepared solely for the use by the party with whom the design professional has entered into a contract and there are no representations of any kind made by the design professional to any party with whom the design professional has not entered into a contract. Any use of the drawing, disk, or electronic data without the expressed written permission of Tower Engineering Group is strictly prohibited. The contractor is responsible to verify all dimensions with conditions on the site and report discrepancies to Tower Engineering for adjustment. All prints to be returned.

TOWER PROJECT NO. 6179

TOWER ENGINEERING GROUP
208 - 897 CORYDON AVE. WINNIPEG, MB R3M 0W7
TEL: (204) 925-1150 FAX: (204) 925-1155
EMAIL: towereng@towereng.ca WEB: www.towereng.ca

CITY OF WINNIPEG
PLANNING, PROPERTY & DEVELOPMENT DEPARTMENT
CIVIC ACCOMMODATIONS DIVISION
300 - 65 GARRY ST. R3C 4K4

PROJECT
City of Winnipeg Surplus Storage Facility

311 ROSS AVENUE

SEALS

PEGM
Certificate of Authorization
Tower Engineering Group
No. 1919 Expiry: April 30, 2007

SHEET TITLE		
MECHANICAL TYPICAL FLOOR LAYOUT		
SCALE	PROJECT NO.	SHEET NO.
AS SHOWN	2006-069	M-1.1