

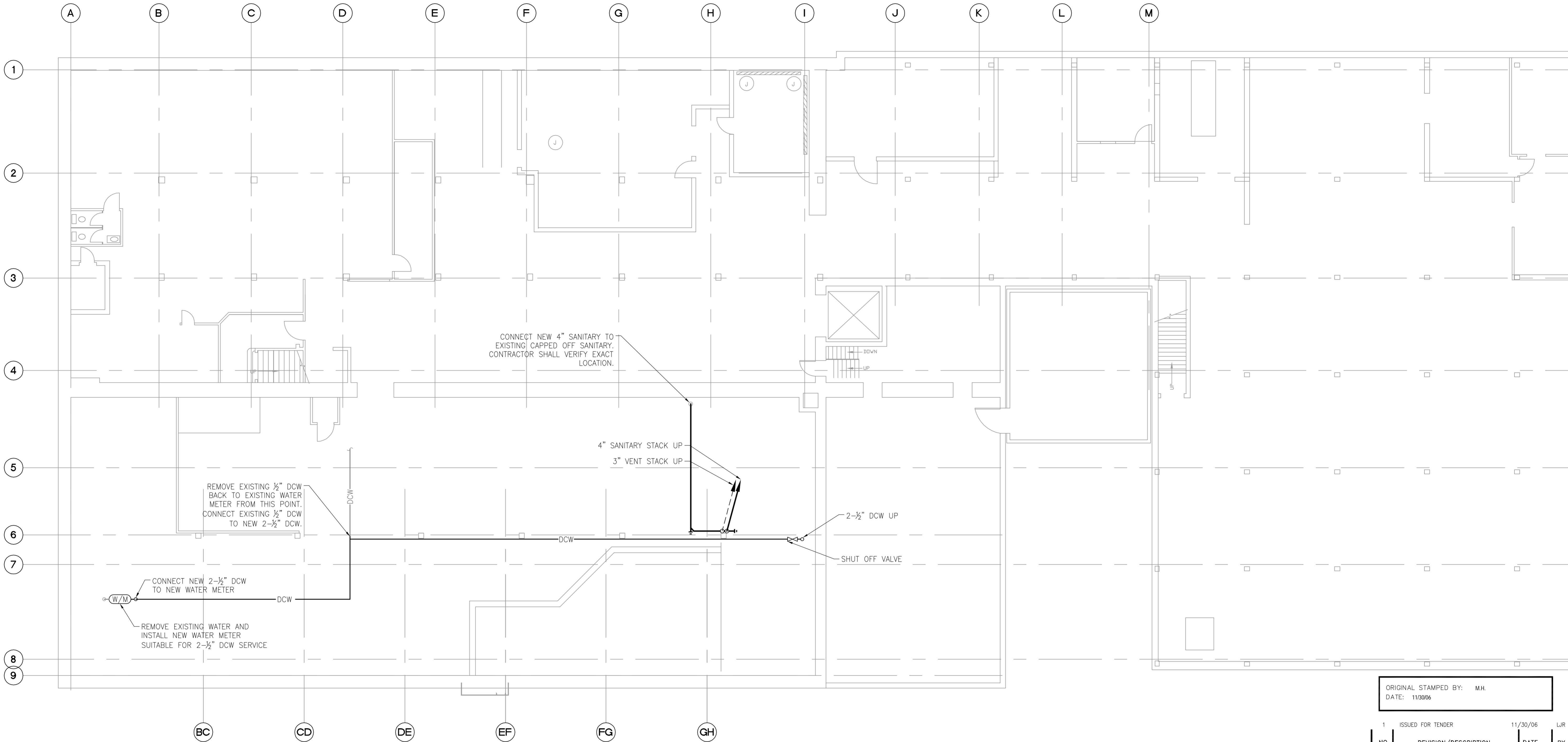
FILE NAME:

DATE:

DESCRIPTION:

PROJECT No.:

ADDRESS:



ORIGINAL STAMPED BY: M.H.
DATE: 11/30/06

NO.	REVISION/DESCRIPTION	DATE	BY
1	ISSUED FOR TENDER	11/30/06	LJR

1 BASEMENT FLOOR PLAN
M-1.0 SCALE: 1/8" = 1'-0"

CONSULTANT <small>These design documents are prepared solely for the use by the party with whom the design professional has entered into a contract and there are no representations of any kind made by the design professional to any party with whom the design professional has not entered into a contract. Any use of the drawing, disk, or electronic data without the expressed written permission of Tower Engineering Group is strictly prohibited. The contractor is responsible to verify all dimensions with conditions on the site and report discrepancies to Tower Engineering for adjustment. All prints to be returned.</small> TOWER ENGINEERING GROUP 208 - 897 CORYDON AVE. WINNIPEG, MB R3M 0W7 TEL: (204) 925-1150 FAX: (204) 925-1155 EMAIL: towereng@towereng.ca WEB: www.towereng.ca	DRAWN BY: LJR CHECKED BY: LJR APPROVED BY: MH
	DATE: 11/30/06 USER APPROVAL CITY OF WINNIPEG PLANNING, PROPERTY & DEVELOPMENT DEPARTMENT CIVIC ACCOMMODATIONS DIVISION 300 - 65 GARRY ST. R3C 4K4 PROJECT City of Winnipeg Surplus Storage Facility 311 ROSS AVENUE
SEALS 	SHEET TITLE MECHANICAL BASEMENT FLOOR LAYOUT
SCALE AS SHOWN	PROJECT NO. 2006-069
SHEET NO. M-1.0	