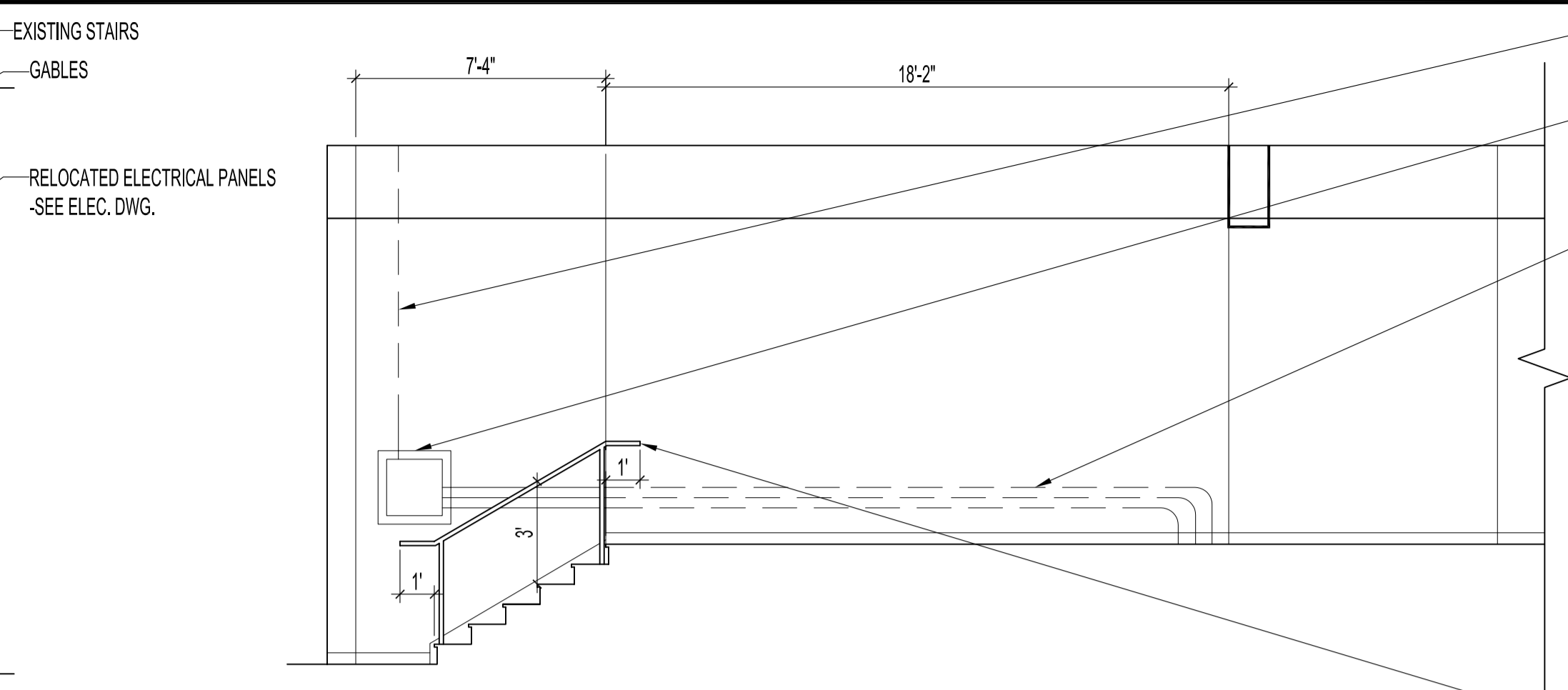
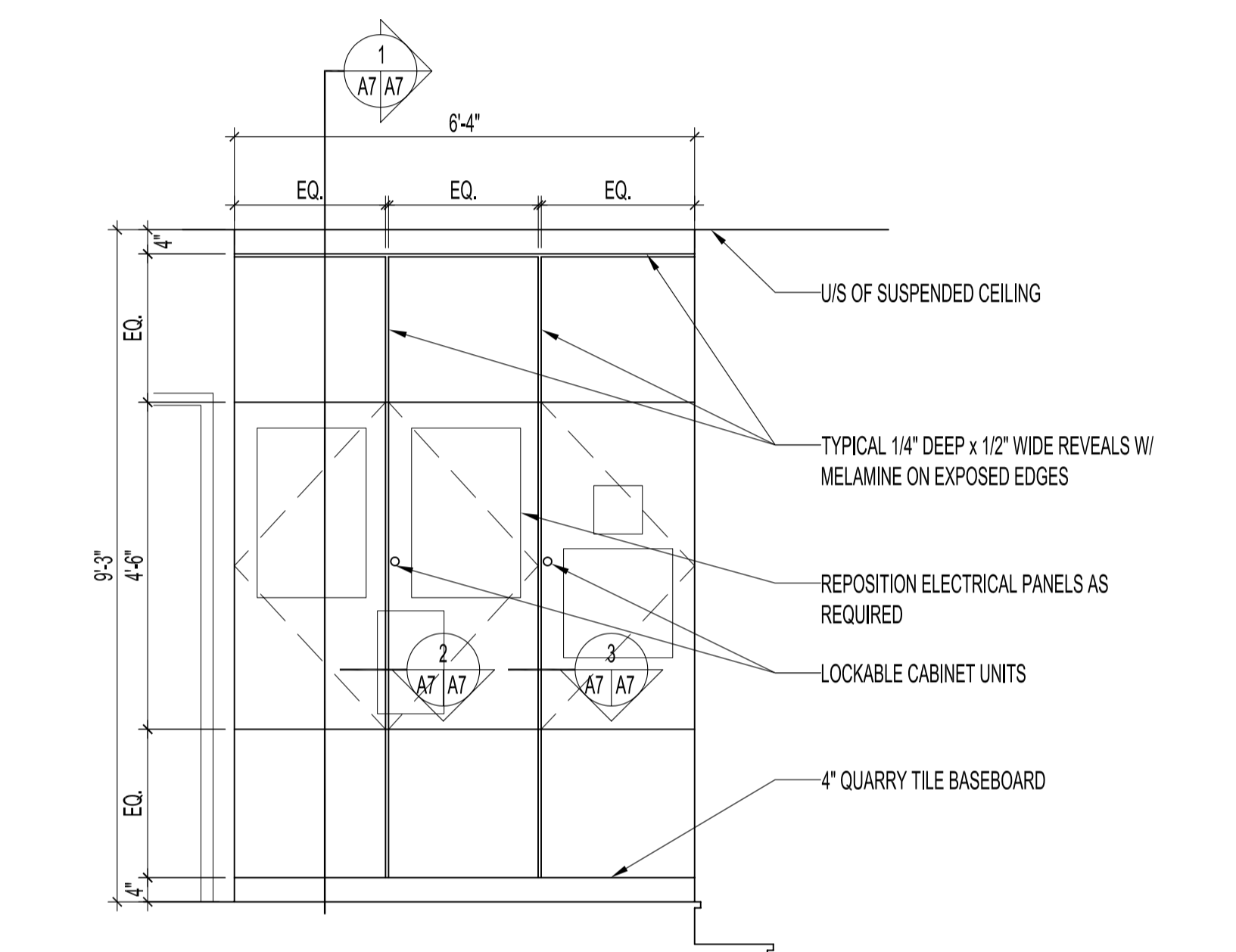


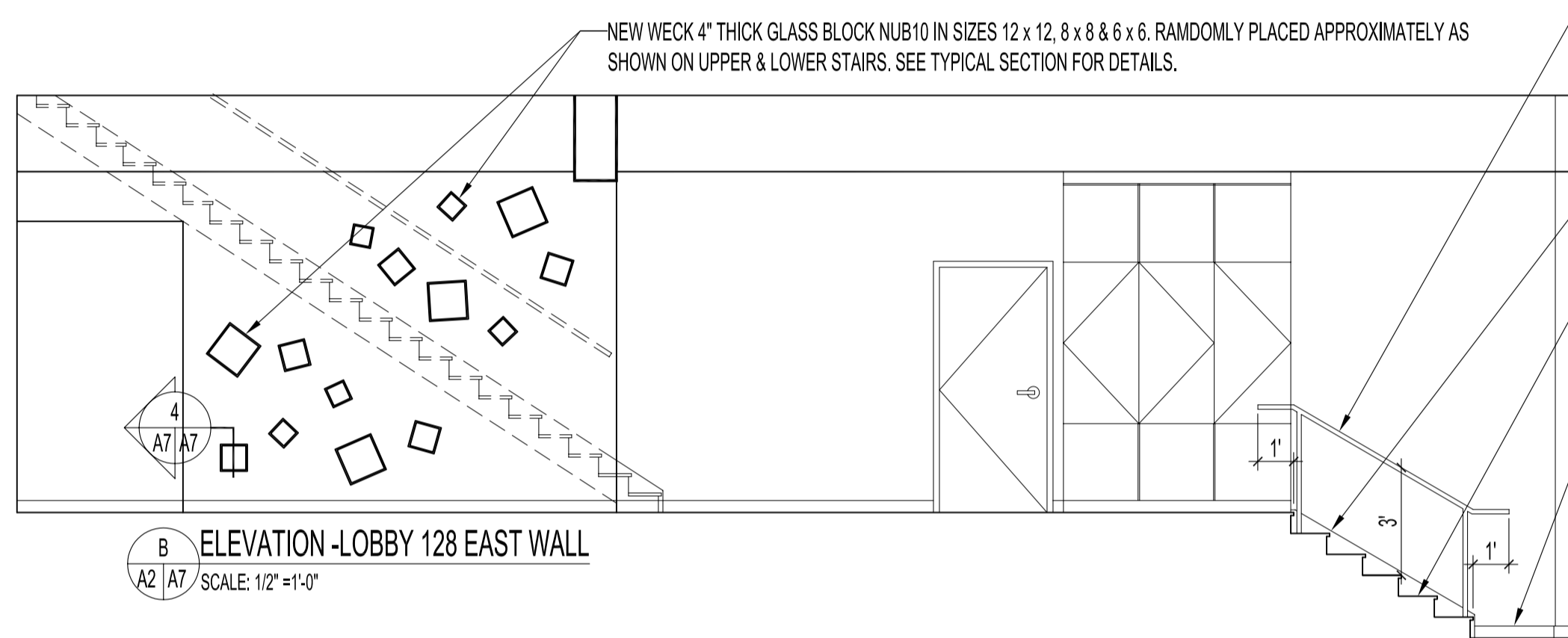
1 LOBBY 128 - ENLARGED MILLWORK PLAN  
A2 | A7 / SCALE: 1/2" = 1'-0"



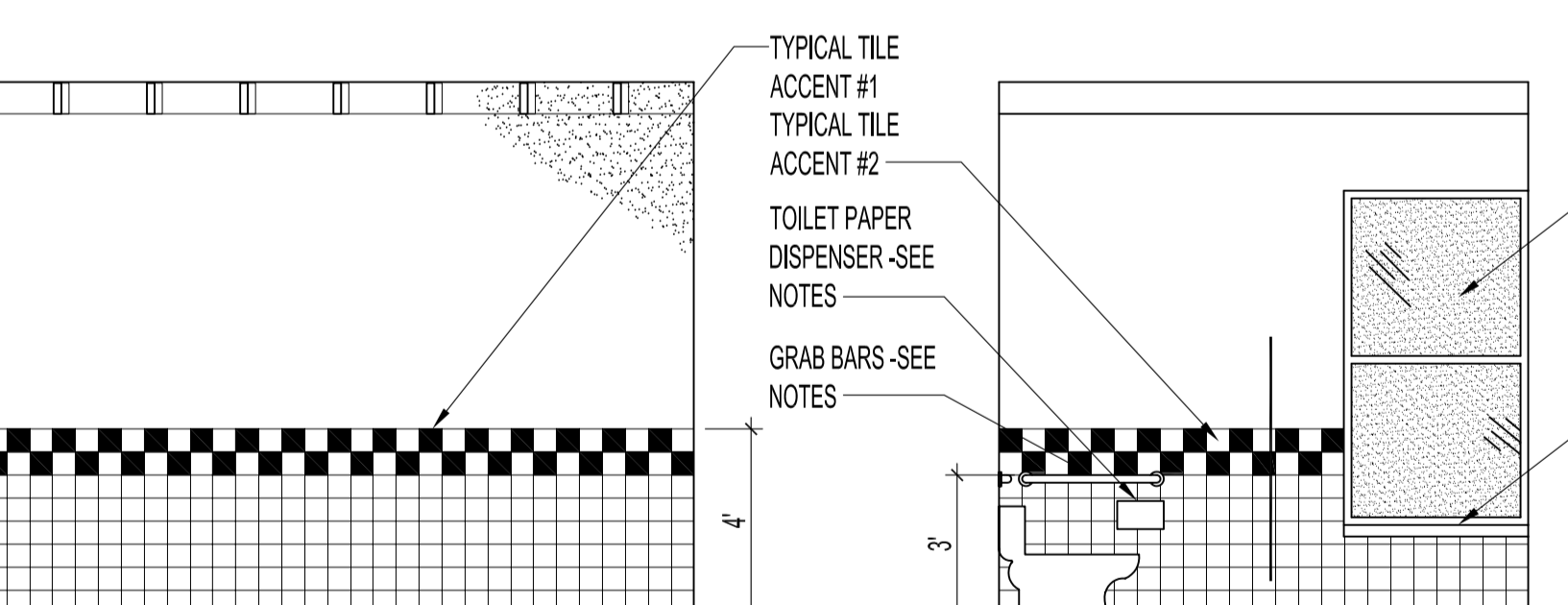
A ELEVATION - LOBBY 128 WEST WALL  
A2 | A7 / SCALE: 1/2" = 1'-0"



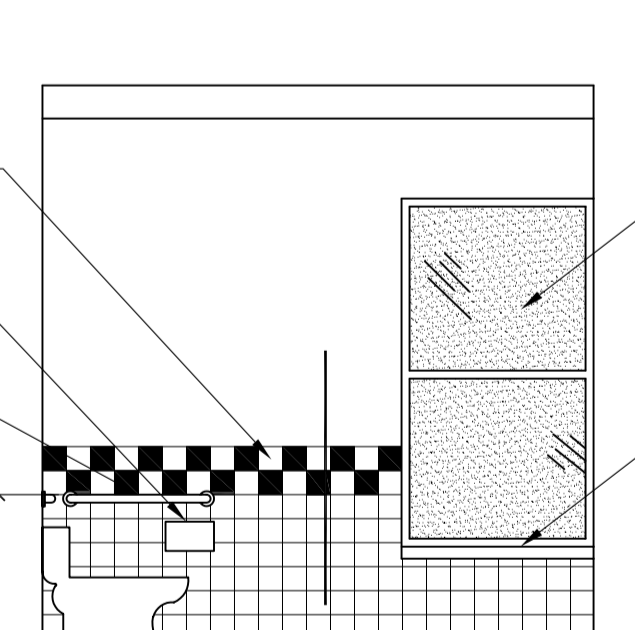
A ELEVATION - LOBBY 128 MILLWORK CABINET  
A7 | A7 / SCALE: 1/2" = 1'-0"



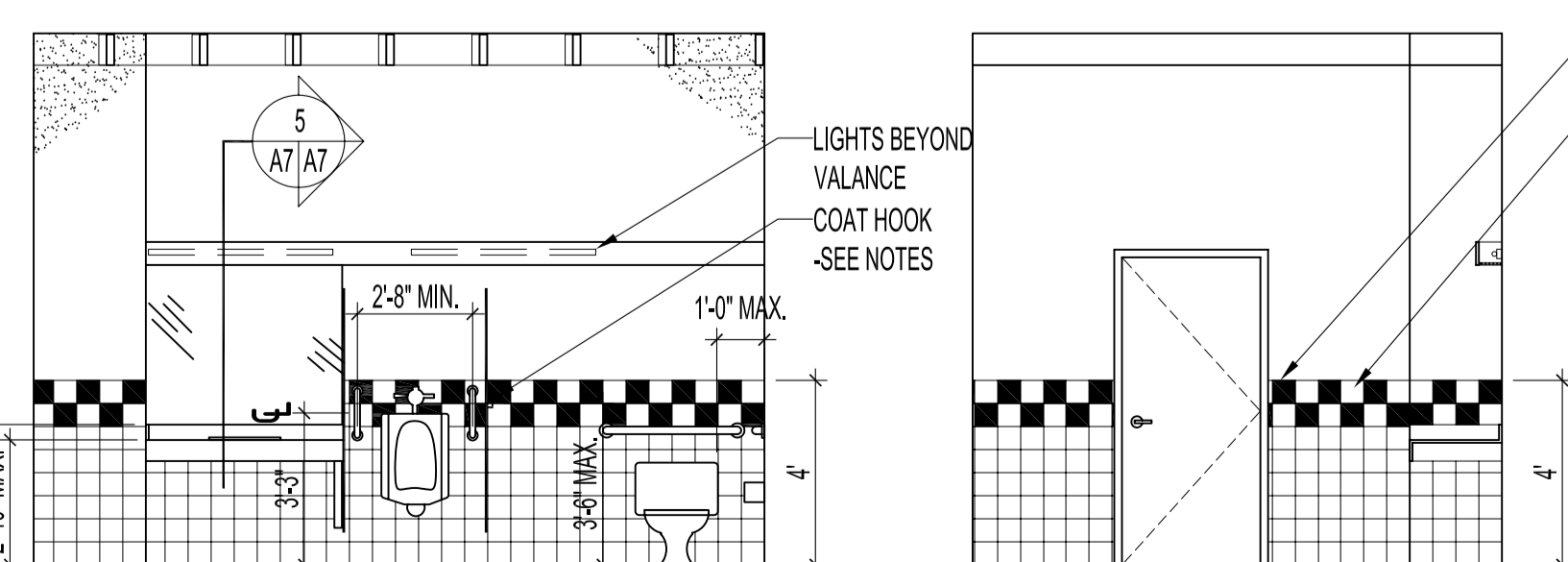
B ELEVATION - LOBBY 128 EAST WALL  
A2 | A7 / SCALE: 1/2" = 1'-0"



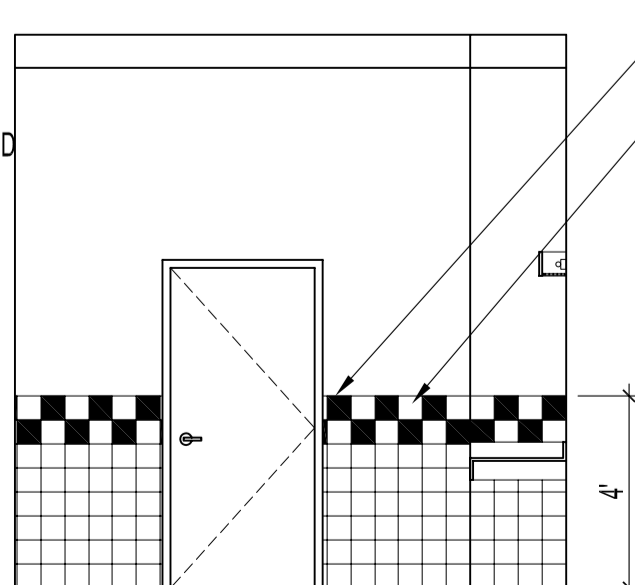
A ELEVATION - WASHROOMS 306 & 307  
A3 | A7 / SCALE: 1/2" = 1'-0"



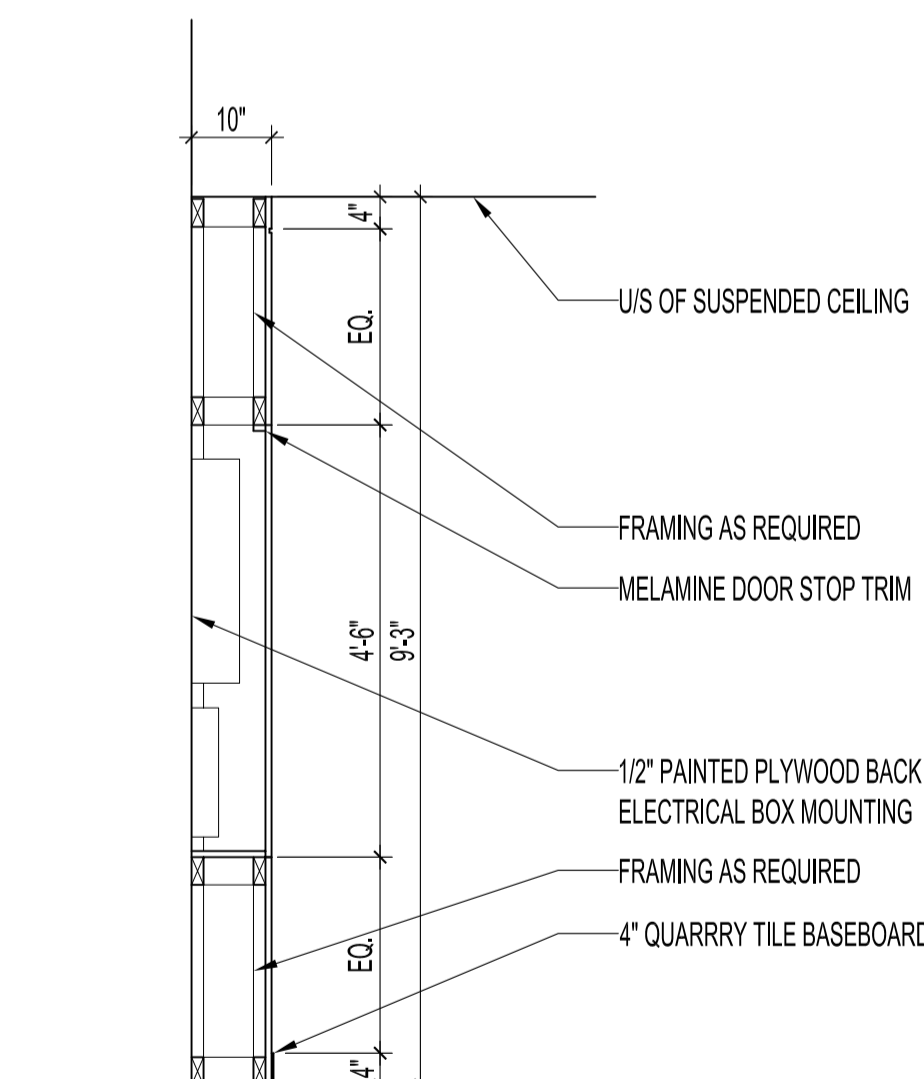
B ELEVATION - WASHROOMS 306 & 307  
A3 | A7 / SCALE: 1/2" = 1'-0"



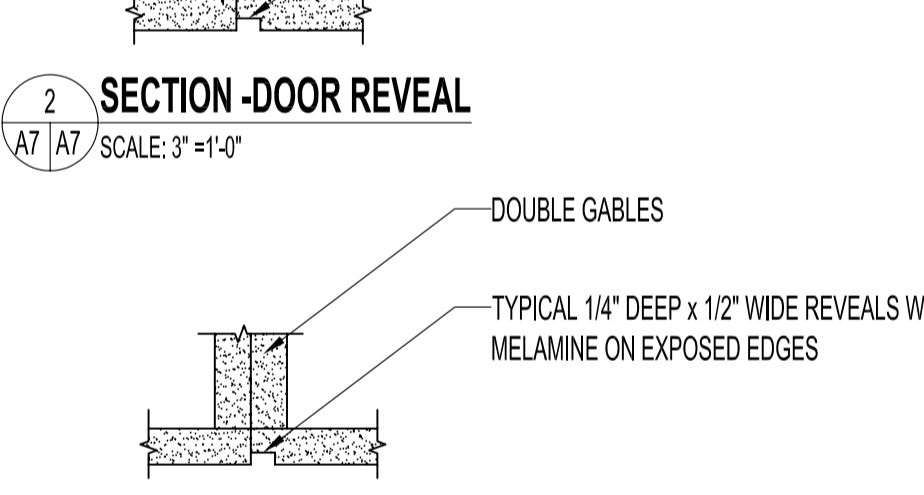
C ELEVATION - WASHROOMS 306 & 307  
A3 | A7 / SCALE: 1/2" = 1'-0"



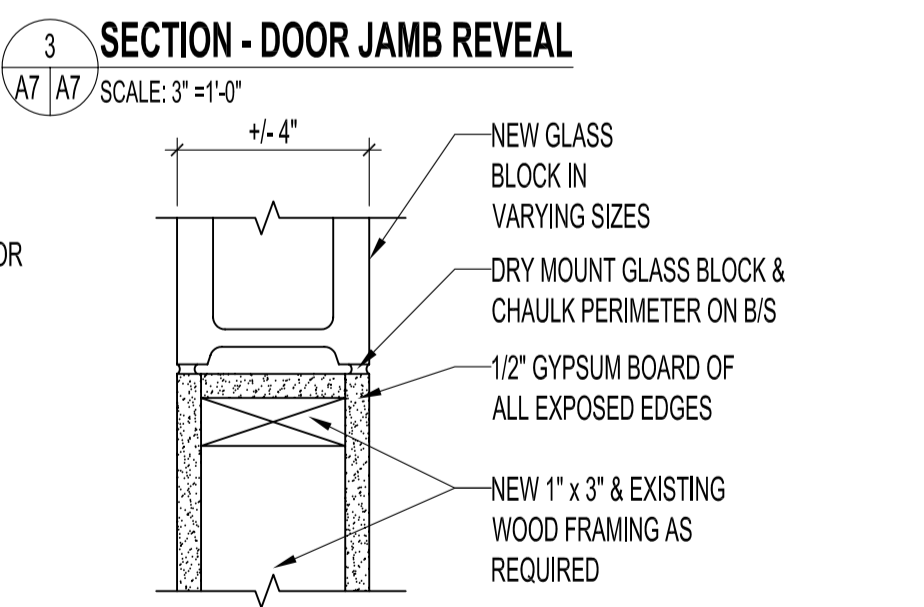
D ELEVATION - WASHROOMS 306 & 307  
A3 | A7 / SCALE: 1/2" = 1'-0"



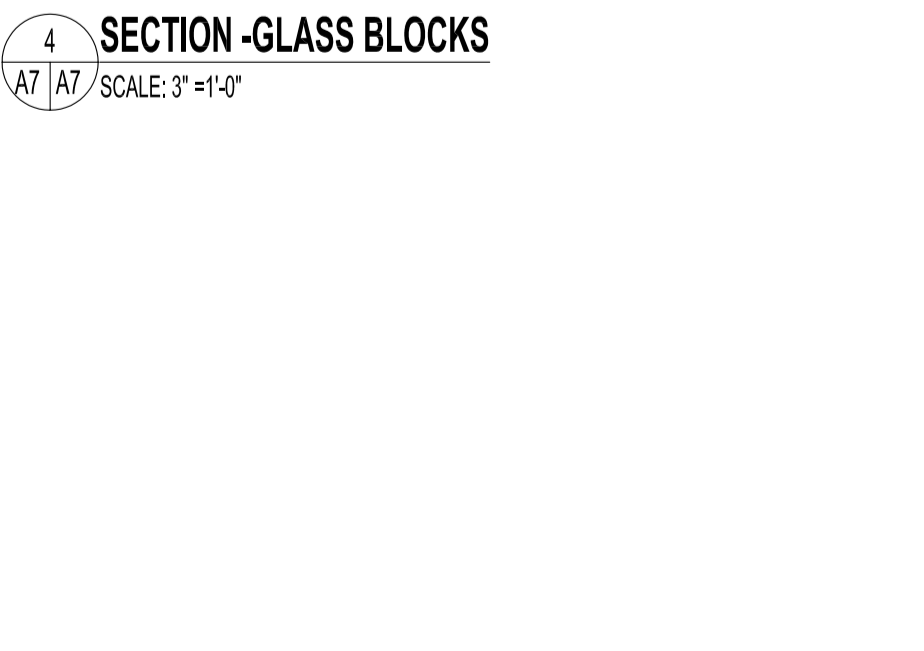
1 SECTION - LOBBY MILLWORK CABINET  
A7 | A7 / SCALE: 1/2" = 1'-0"



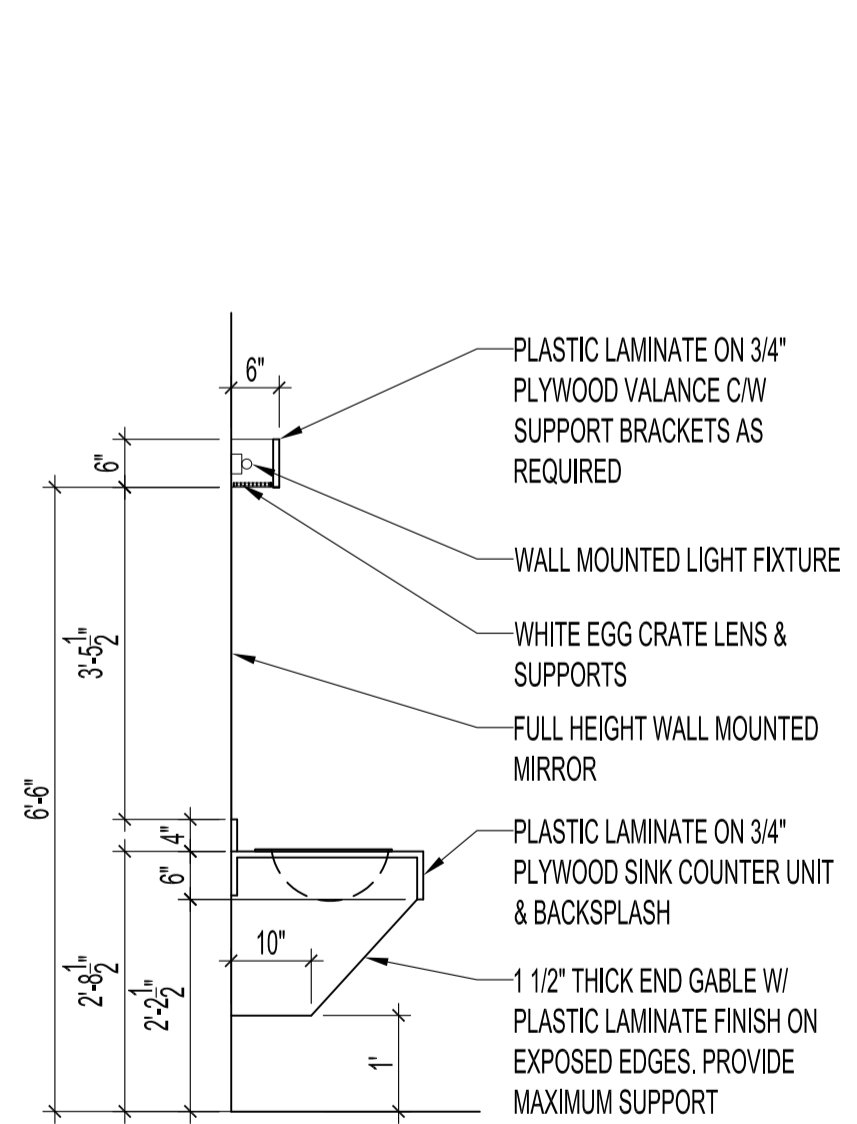
2 SECTION - DOOR REVEAL  
A7 | A7 / SCALE: 3" = 1'-0"



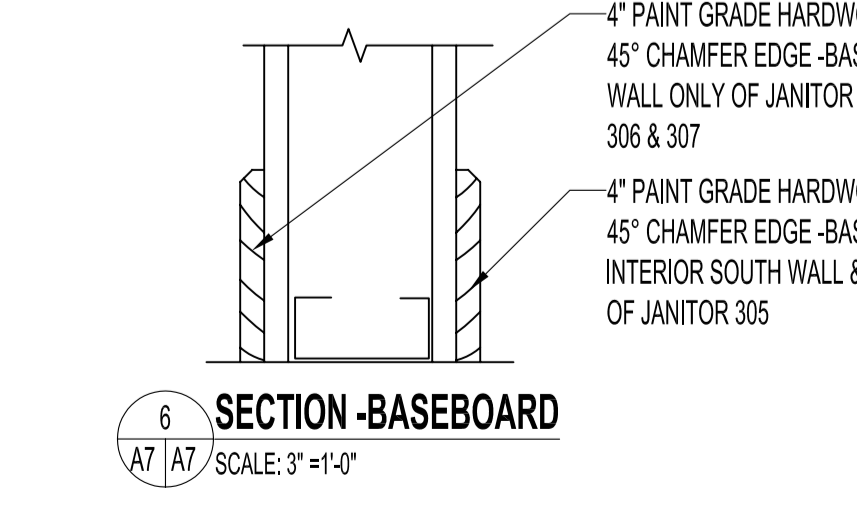
3 SECTION - DOOR JAMB REVEAL  
A7 | A7 / SCALE: 3" = 1'-0"



4 SECTION - GLASS BLOCKS  
A7 | A7 / SCALE: 3" = 1'-0"



5 SECTION - VALANCE & SINK  
A7 | A7 / SCALE: 1/2" = 1'-0"



6 SECTION - BASEBOARD  
A7 | A7 / SCALE: 3" = 1'-0"

**NOTES :**  
**GENERAL NOTES:**

- ALL ACCESSORIES, PLUMBING FIXTURES TO BE INSTALLED AT STANDARD HEIGHTS UNLESS NOTED OTHERWISE.
- ALL ACCESSORIES, PLUMBING FIXTURES IN BARRIER FREE WASHROOMS TO BE INSTALLED TO THE LATEST MANITOBA BUILDING CODE STANDARDS FOR BARRIER-FREE ACCESS.

**FINISHES, ACCESSORIES & HARDWARE**  
ALL PAINT COLOURS TO BE DETERMINED BY CONTRACT ADMINISTRATOR AT A LATER DATE.

**LOBBY 128**

**GLASS BLOCK**  
NEW WECK 4" THICK GLASS BLOCK NUB10  
IN SIZES 12 x 12, 8 x 8 & 6 x 6. RANDOMLY PLACED APPROXIMATELY AS SHOWN ON UPPER & LOWER STAIRS. SEE TYPICAL SECTION & ELEVATION.

**MILLWORK CABINET**  
-EXTERIOR CABINET MADE OF 3/4" MELAMINE (TAFISA L456 SERENITY) W/ MELAMINE TAPE ON ALL EXPOSED EDGES.

**HARDWARE**  
-HINGES TO BE BLUM 170° FULL EXTENSION CUP HINGES NICKEL PLATED ( 1 1/2" PAIR PER DOOR)  
-HAFFLE NON MAGNETIC PRESSURE CATCH #245.50.301  
-STEEL ELBOW CATCH FOR DOUBLE DOORS  
-SEE FLOOR FINISH PLAN ON A2 FOR QUARRY TILE, LOBBY ENTRANCE STAIRS, STAIRS 126 (BASEMENT), STAIRS 127

**WASHROOMS 306 & 307**  
BOBRICK ACCESSORIES  
ROLL PAPER TOWEL DISPENSER B-72860  
MATRIX SERIES WASTE RECEPTACLE B-6277  
CLASSIC SERIES SOAP DISPENSER B-40  
CLASSIC SERIES TOILET PARTITIONS 1540 -COLOUR 1530 BEIGE  
CLASSIC SERIES TWIN JUMBO-ROLL TOILET TISSUE DISPENSER B-2892  
MATRIX SERIES SANITARY NAPKIN DISPOSAL B-5270  
GRAB BARS -SERIES B-5806.99 x 36"  
GRAB BARS -SERIES B-5806.99 x 24"  
CLOTHES HOOK B-233  
PULLS -PROVIDE PULL HANDLES ON BIS OF BARRIER FREE CUBICLE DOOR  
SIGNAGE -PROVIDE ONE EACH BARRIER-FREE WASHROOM SIGN FOR THE WOMEN'S & MEN'S WASHROOM. REQUIREMENTS ARE TO FOLLOW CODES NOTED ABOVE.  
CERAMIC TILE -ACCENT TILE #1 -6" x 6" OLYMPIA TILE EXCELLENCE MATTE FINISH IN COLOUR SPRING GREEN # 60620  
ACCENT TILE #2 -6" x 6" OLYMPIA TILE EXCELLENCE MATTE FINISH IN COLOUR COTTO # 60680  
PLASTIC LAMINATE FOR SINK UNITS & WASHROOM WINDOW SILLS  
-NEVAMAR MARRAKESH MARKET KH50101 TEXTURED

ORIGINAL STAMPED BY: RJK.FOK LJ Arch.  
DATE: 2006.12.01

NO.	REVISION/DESCRIPTION	BY	DATE
<b>SEALS</b>			
<b>DRAWN BY</b>	<b>CHECKED BY</b>	<b>APPROVED</b>	
MMK	USER	APPROVAL	
<b>DATE</b>	2006.12.01		
<b>CITY OF WINNIPEG PLANNING, PROPERTY &amp; DEVELOPMENT DEPARTMENT CIVIC ACCOMMODATIONS DIVISION 300 - 65 GARRY ST. R3C 4K4</b>			
<b>PROJECT</b> SURPLUS STORAGE FACILITY REDEVELOPMENT OF MAIN FLOOR & THIRD FLOOR 311 ROSS AVENUE			
<b>SHEET TITLE</b>			
MILLWORK PLAN, ELEVATIONS & SECTIONS			