

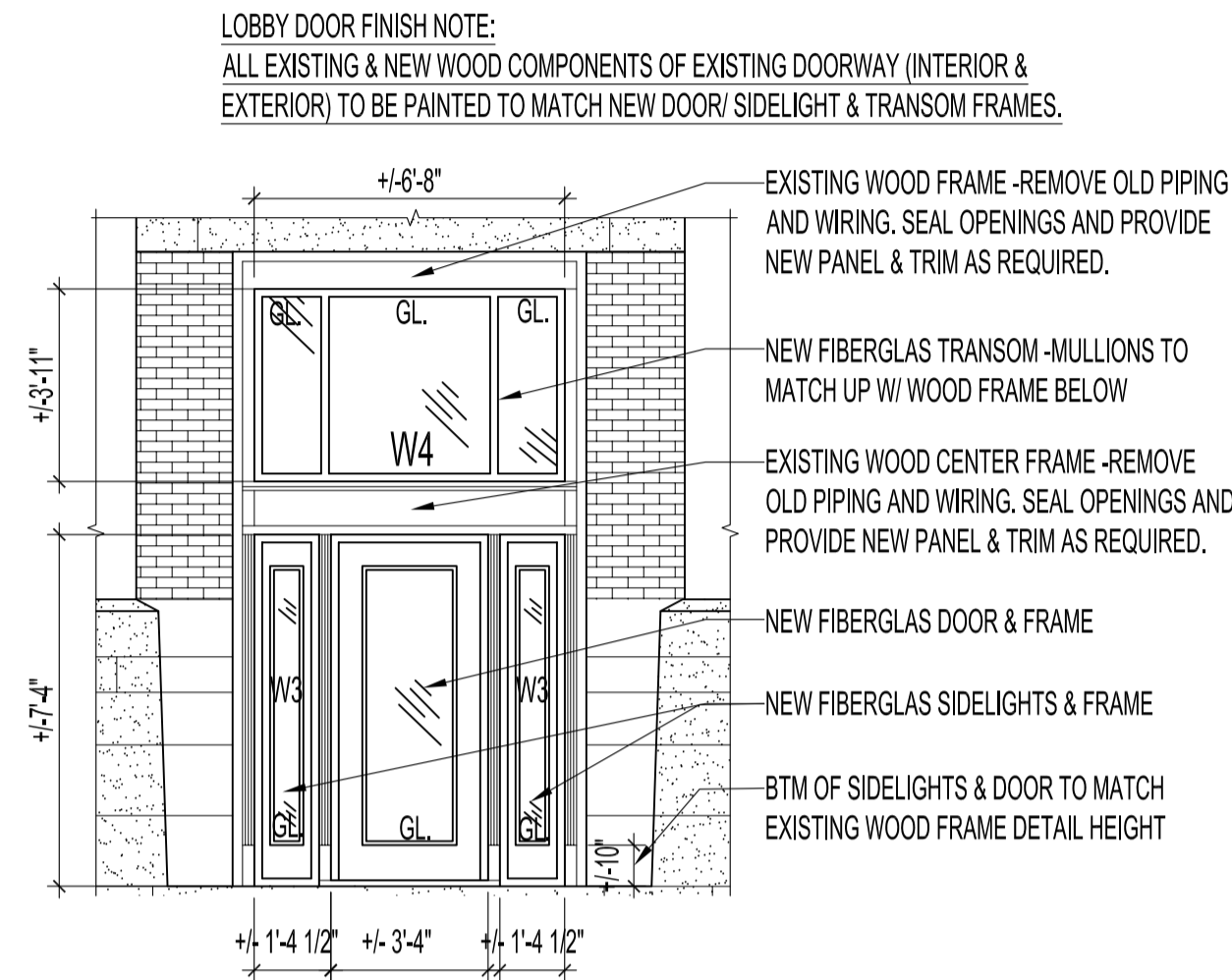
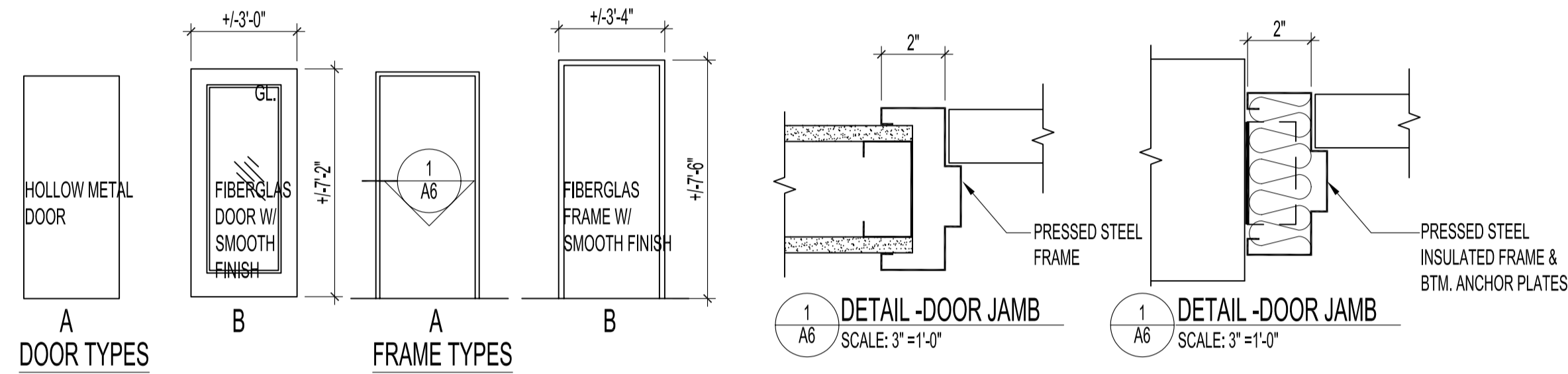
DOOR SCHEDULE										
DOOR NO.	DOOR				FRAME			RATING	HARDWARE GROUP	NOTES
	TYPE	WIDTH	HEIGHT	THICKNESS	MATERIAL	FINISH	TYPE			
MAIN FLOOR										
D128A	B	3'-0" x 7'-2" x 1 3/4"		FG.	PF.	B	FG.	PF.	1	DOOR & FRAME TO FIT EXISTING OPENING
D128B	A	3'-0" x 6'-10" x 1 3/4"		H.M.	PT.	A	P.S.	PT.	1 1/2 HOUR	DOOR & FRAME TO FIT EXISTING OPENING
D128C	EXISTING				PT.			PT.		
THIRD FLOOR										
D301	A	2'-10" x 6'-10" x 1 3/4"		H.M.	PT.	A	P.S.	PT.	3/4 HOUR	DOOR & FRAME TO FIT EXISTING OPENING
D305	A	3'-0" x 7'-0" x 1 3/4"		H.M.	PT.	A	P.S.	PT.	3/4 HOUR	
D306	A	3'-0" x 7'-0" x 1 3/4"		H.M.	PT.	A	P.S.	PT.		
D307	A	3'-0" x 7'-0" x 1 3/4"		H.M.	PT.	A	P.S.	PT.		
D310A	EXISTING				PT.			PT.		
D310B	EXISTING				PT.			PT.		

HARDWARE GROUPS	
#1	1A-2B-5A-6A-8A-8B-8D
#2	1A-2A-5A-6A-7A-8B-8C
#3	1A-2A-5A-6A-8B-8D
#4	1A-2A-5A-7A-8B-8C
#5	1A-3A-3B-3A

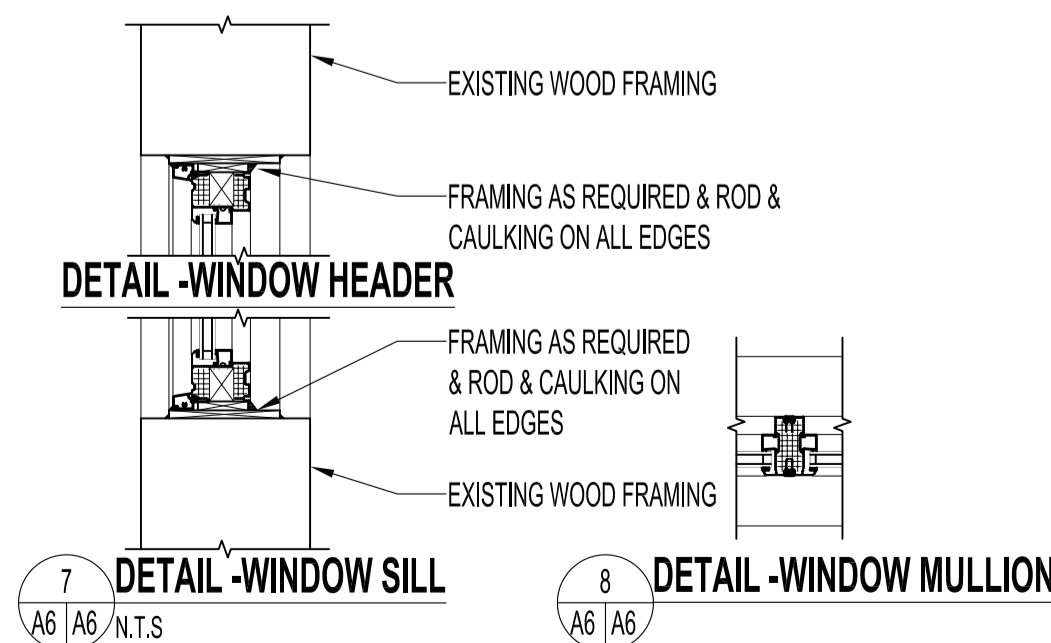
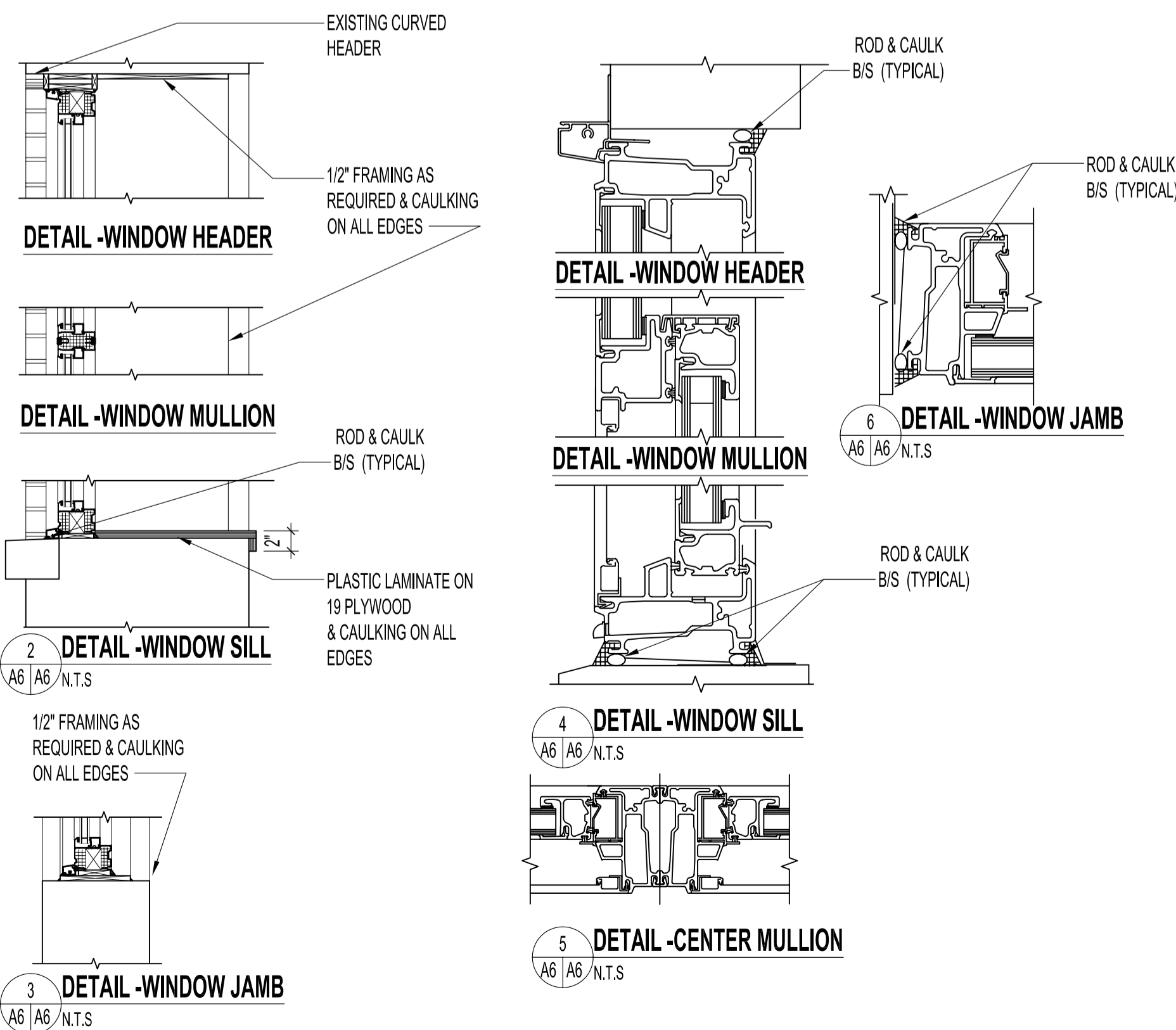
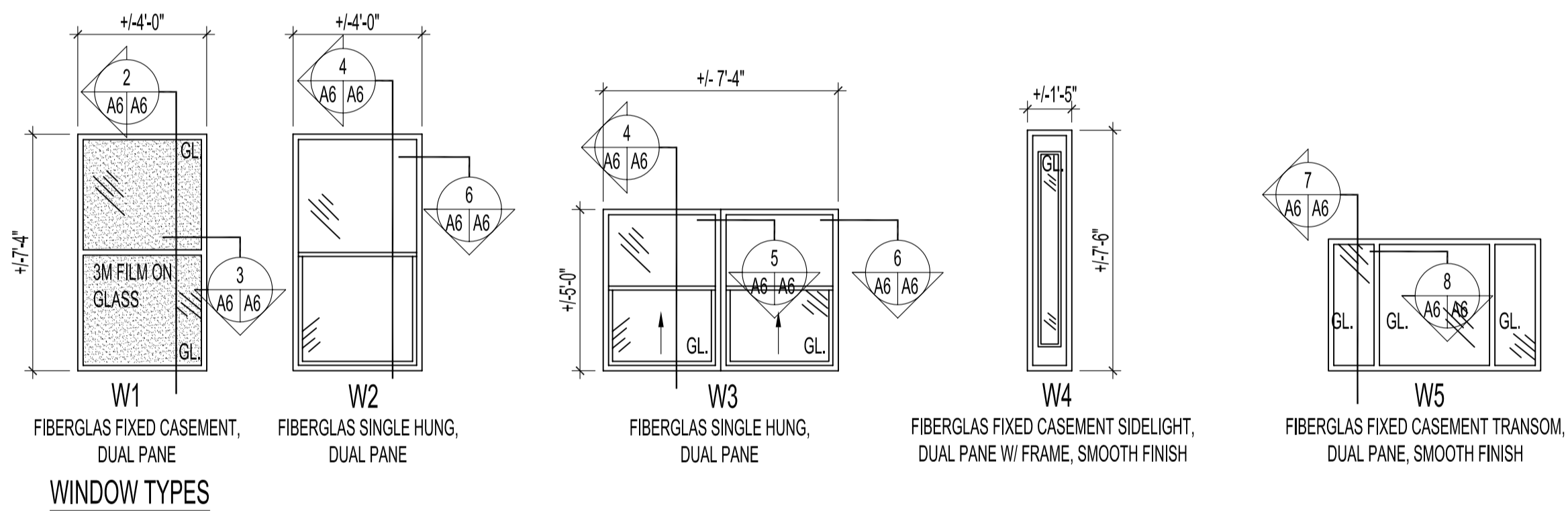
HARDWARE CODES:

- 1A HINGES -MCKINNEY TA 714 4 1/2" x 4" STANDARD WEIGHT BEARING -STEEL 626 FINISH
- 2A -SCHLAGE S-SERIES STANDARD DUTY COMMERCIAL LOCK -JUPITER 626 FINISH
- 2B LOCKABLE SET - S80 PD F86
- 3A PUSH PLATE -K13 PUSH PLATE HALF ROUND STANDARD METAL
- 3B PULL W/ PLATE -STAINLESS STEEL .2412B 630 SATIN STAINLESS STEEL .3/4" x 12" PULL /062 PLATE
- 5A CLOSER -LGN 1461 SERIES SLIM LINE COVER INCLUDED NON-HANDED
- 6A FLOOR STOP -STANDARD METAL 626
- 7A KICKPLATE K10A 12 x 34 626 FINISH
- 8A WEATHERSTRIP -W29 689
- 8B DOOR SWEEP -W13S 689
- 8C SMOKE SEAL -W21BLACK
- 8D THRESHOLD -CT-32

DOOR ABBREVIATIONS					
H.M.	-HOLLOW METAL	FG.	-FIBERGLAS	PF.	-PREFINISHED
P.S.	-PRESSED STEEL	PT.	-PAINT		



ELEVATION -FRONT LOBBY ENTRANCE  
SCALE: 1/4"=1'-0"



NOTES :

LOBBY DOOR FINISH NOTE:  
ALL EXISTING & NEW WOOD COMPONENTS OF EXISTING DOORWAY (INTERIOR & EXTERIOR) TO BE PAINTED TO MATCH NEW DOOR/ SIDELIGHT & TRANSOM FRAMES.

ORIGINAL STAMPED BY: R.K.FOK LI Arch.  
DATE: 2006.12.01

NO.	REVISION/DESCRIPTION	BY	DATE
SEALS			

DRAWN BY: MKK  
DATE: 2006.12.01  
CHECKED BY: USER APPROVAL  
APPROVED

CITY OF WINNIPEG  
PLANNING, PROPERTY & DEVELOPMENT DEPARTMENT  
CIVIC ACCOMMODATIONS DIVISION  
300 - 65 GARRY ST. R3C 4K4

PROJECT  
SURPLUS STORAGE FACILITY  
REDEVELOPMENT OF MAIN FLOOR AND THIRD FLOOR  
311 ROSS AVENUE

SHEET TITLE  
DOOR SCHEDULE & DETAILS

SCALE: AS SHOWN  
PROJECT NO.: 2006-089  
SHEET NO.: A6