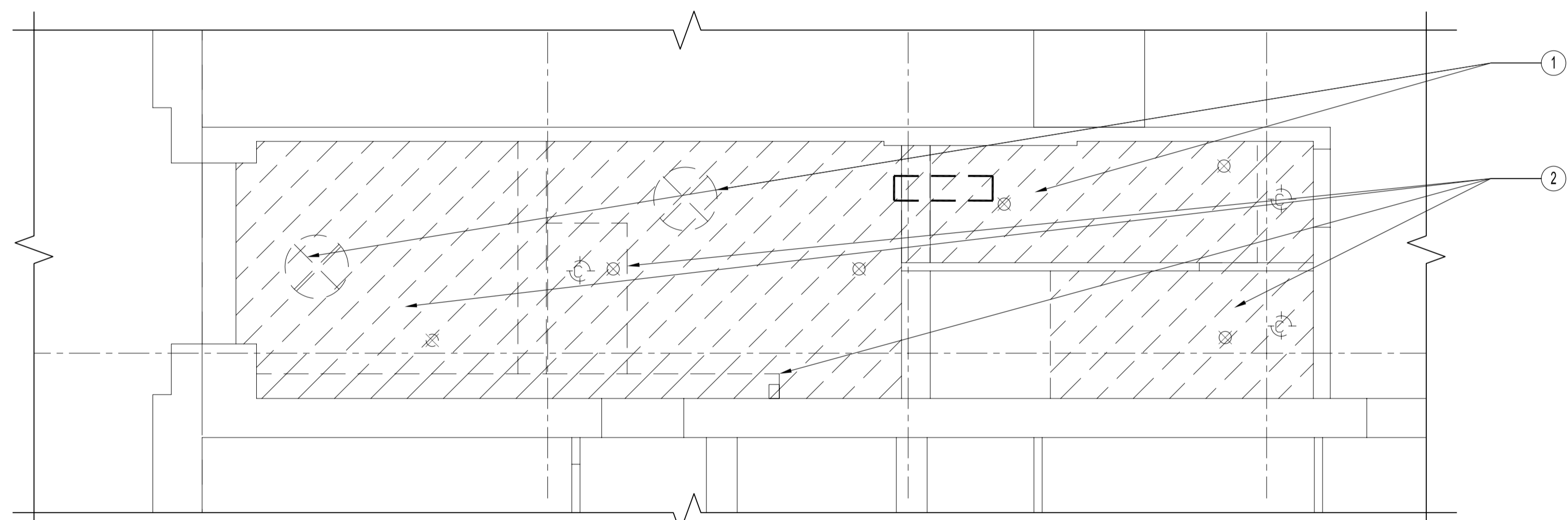
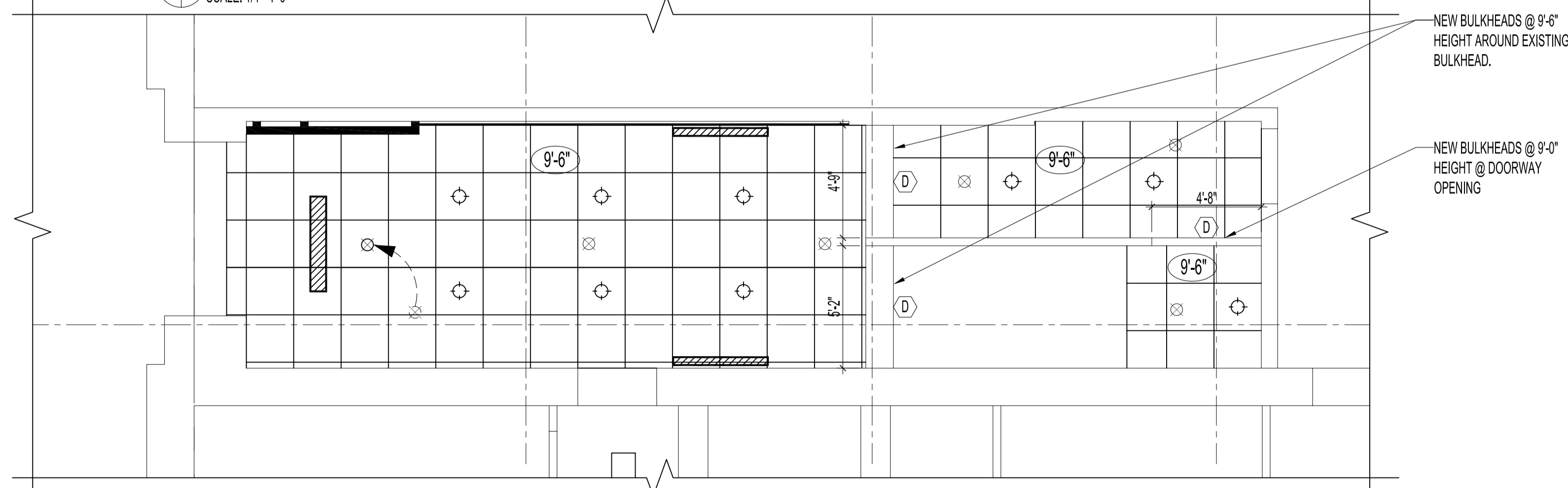


PARTIAL MAIN FLOOR PLAN - REFLECTED CEILING PLAN
SCALE: 1/16"=1'-0"



1 PARTIAL MAIN FLOOR PLAN: ENLARGED LOBBY PLAN - REFLECTED CEILING DEMOLITION
SCALE: 1/4"=1'-0"



2 PARTIAL MAIN FLOOR PLAN: ENLARGED LOBBY PLAN - REFLECTED CEILING RENOVATION
SCALE: 1/4"=1'-0"

REFLECTED CEILING DEMOLITION NOTES

- 1 REMOVE ALL OLD MECHANICAL, LIGHTING & WIRING. SEE MECHANICAL & ELECTRICAL DEMOLITION DRAWINGS.
- 2 REMOVE ALL EXISTING 12 x 12 CEILING TILE, FRAMING, TRIM AND ALL OTHER OBTRUSIVE OBJECTS FROM EXISTING CEILING DOWN TO ORIGINAL CEILING & BEAMS BEYOND.

CEILING LEGEND

- CEILING HEIGHT
- 12 x 48 FLUORESCENTS TO BE REMOVED
- INCANDESCENT CEILING LIGHTS TO BE REMOVED
- ACOUSTIC CEILING SYSTEM**
ARMSTRONG DESIGNER SECOND LOOK II #2754 24 x 48 x 3/4"
ANGLED TEGULAR & SHADOW MOLDING @ WALLS - COLOUR WHITE
- 8 x 48 SUSPENDED INDIRECT FLUORESCENTS
- 4 x 48 WALL MOUNTED FLUORESCENTS
- NEW POTLIGHTS
- AIR RETURNS TO BE REMOVED
- SPRINKLER HEADS TO BE RELOCATED
- SPRINKLER HEADS TO BE EXTENDED TO ACOUSTIC CEILING

NEW BULKHEADS @ 9'-6" HEIGHT AROUND EXISTING BULKHEAD.

NEW BULKHEADS @ 9'-0" HEIGHT @ DOORWAY OPENING

NOTES :
GENERAL NOTE:
1. FOR SPRINKLER LAYOUT, SEE MECHANICAL DRAWING.
2. FOR LIGHTING & MISC. ELECTRICAL LAYOUT, SEE ELECTRICAL DRAWING.

ORIGINAL STAMPED BY: R.K.FOK LI Arch.
DATE: 2006.12.01

NO.	REVISION/DESCRIPTION	BY	DATE
SEALS			

DRAWN BY: MKK CHECKED BY: USER APPROVAL
DATE: 2006.12.01

CITY OF WINNIPEG
PLANNING, PROPERTY & DEVELOPMENT DEPARTMENT
CIVIC ACCOMMODATIONS DIVISION
300 - 65 GARRY ST. R3C 4K4

PROJECT
SURPLUS STORAGE FACILITY
REDEVELOPMENT OF MAIN FLOOR AND THIRD FLOOR
311 ROSS AVENUE

SHEET TITLE
MAIN FLOOR LOBBY
REFLECTED CEILING PLAN - DEMOLITION & RENOVATION

SCALE	PROJECT NO.	SHEET NO.
AS SHOWN	2006-069	A5