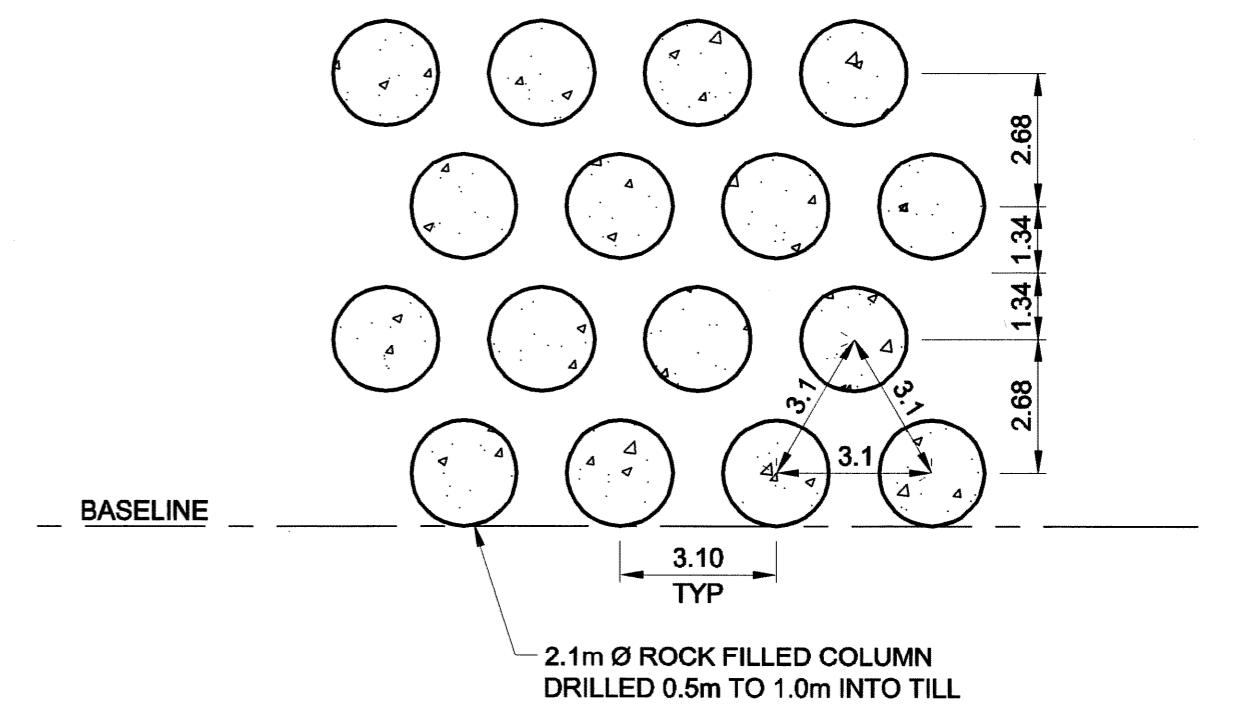
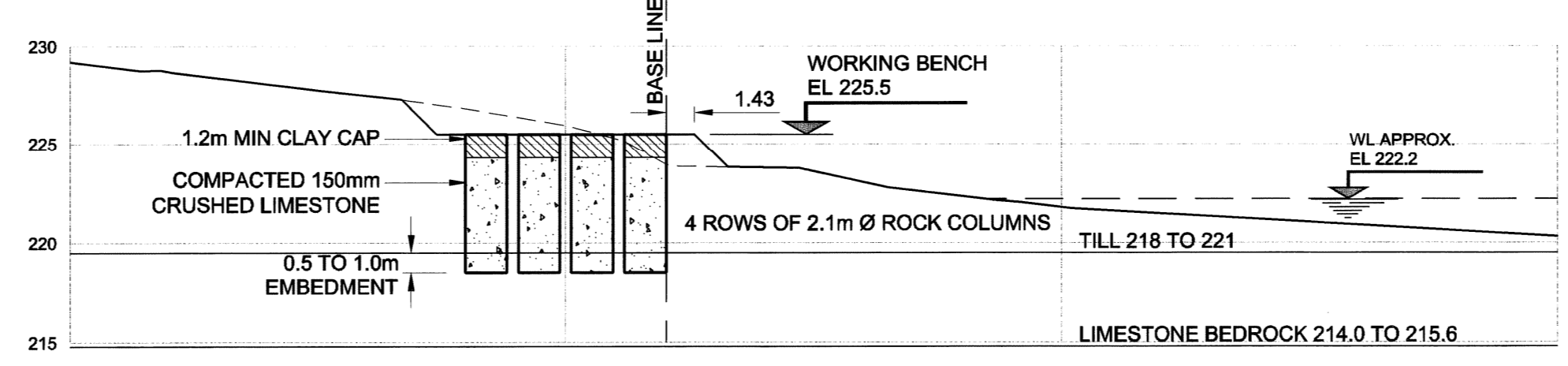
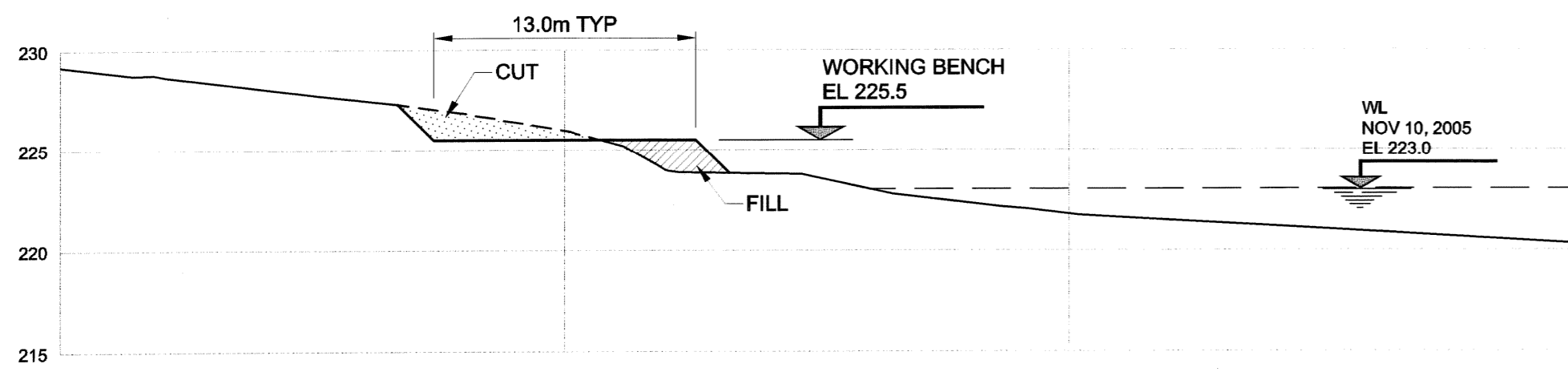
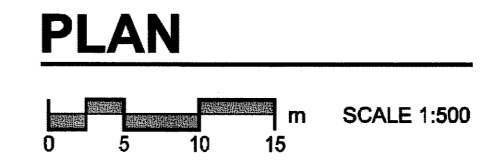


- LEGEND**
- CREST OF RIVER BANK
 - OPEN TENSION CRACK SUMMER 2004
 - OUTLINE OF INSTABILITY 1988
 - GEORGE MCGREGOR PROPERTY OWNER (NAMES PROVIDED BY CITY OF WINNIPEG)
 - SI - 04 - 04 SLOPE INCLINOMETER
 - SP - 04 - 01 PIEZOMETER
 - TH - 05 - 07 1.5 DIAMETER TEST HOLES



APECM
Certificate of Authorization
UMA Engineering Ltd.
No. 256 Expiry: April 30, 2007

PROFESSIONAL'S SEAL
PROVINCE OF MANITOBA
REGISTERED PROFESSIONAL ENGINEER
J. E. TALLIN
29 Nov 04
CONSULTANT DRAWING NO. 002
0265-371-03

THE CITY OF WINNIPEG
PUBLIC WORKS DEPARTMENT

RIVERBANK STABILIZATION
PEMBINA HWY AT GRANDMONT BLVD
PHASE 2

ROCK COLUMNS
PLAN AND DETAILS

CITY DRAWING NUMBER: X000-00-00
SHEET 2 OF 4
REV 0
P3262-3

TENDER NO. 0000

LOCATION APPROVED UNDERGROUND STRUCTURES

SUPPL. U/G STRUCTURES	DATE	COMMITTEE

NOTE: LOCATION OF UNDERGROUND STRUCTURES AS SHOWN ARE BASED ON THE BEST INFORMATION AVAILABLE. BUT NO GUARANTEE IS GIVEN THAT ALL EXISTING UTILITIES ARE SHOWN OR THAT THE GIVEN LOCATIONS ARE EXACT. CONFIRMATION OF EXISTENCE AND EXACT LOCATION OF ALL SERVICES MUST BE OBTAINED FROM THE INDIVIDUAL UTILITIES BEFORE PROCEEDING WITH CONSTRUCTION.

NO.	REVISIONS	YYMMDD	BY
0	ISSUED FOR CONSTRUCTION	06/11/29	LJV

UMA | AECOM

© 2005 UMA ENGINEERING LTD. ALL RIGHTS RESERVED.

DESIGNED BY	CHECKED BY
JET	

DRAWN BY	APPROVED BY
LJV	

HOR. SCALE	AS NOTED	RELEASED FOR CONSTRUCTION
	NA	

VERT. SCALE	DATE