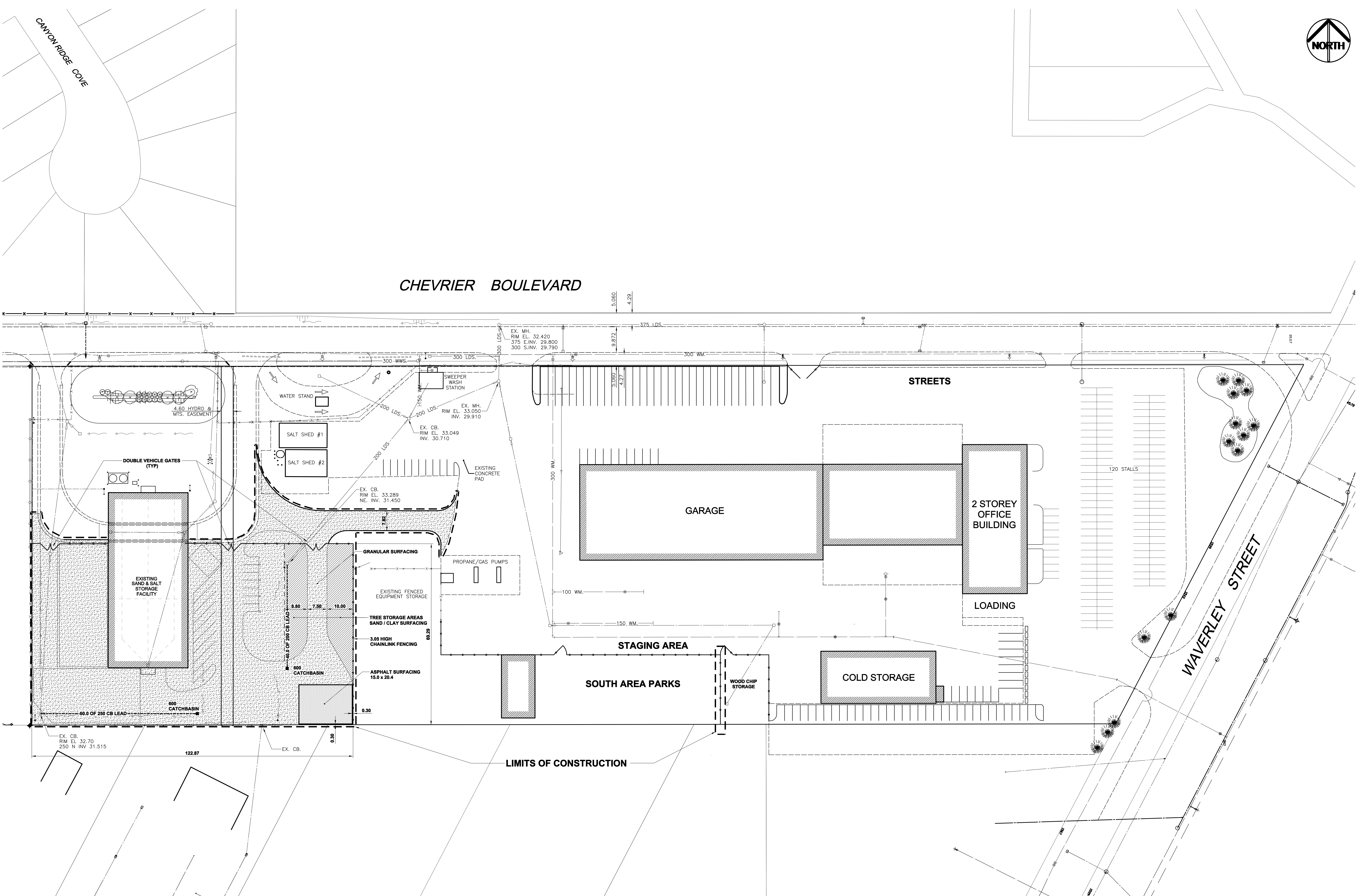


FILE NAME: XXXXXXXX.dwg DATE: 2006.11.08 DESCRIPTION: SITEPLAN PROJECT No: SCHEMATIC ADDRESS: PROJECT ADDRESS

NOTES:



CHEVRIER BOULEVARD

STREETS

WAVERLEY STREET

GARAGE

2 STOREY OFFICE BUILDING

LOADING

COLD STORAGE

STAGING AREA

SOUTH AREA PARKS

LIMITS OF CONSTRUCTION

120 STALLS

DOUBLE VEHICLE GATES (TYP)

EXISTING SAND & SALT STORAGE FACILITY

SALT SHED #1

SALT SHED #2

GRANULAR SURFACING

EXISTING FENCED EQUIPMENT STORAGE

TREE STORAGE AREAS SAND / CLAY SURFACING

3.05 HIGH CHAINLINK FENCING

ASPHALT SURFACING 15.0 x 20.4

600 CATCHBASIN

600 CATCHBASIN

PROPANE/GAS PUMPS

SWEEPER WASH STATION

EXISTING CONCRETE PAD

WOOD CHIP STORAGE

EX. MH. RIM EL. 32.420 375 E. INV. 29.800 300 S. INV. 29.790

EX. MH. RIM EL. 33.050 INV. 29.910

EX. CB. RIM EL. 33.049 INV. 30.710

EX. CB. RIM EL. 33.289 NE. INV. 31.450

EX. CB. RIM EL. 32.70 250 N INV. 31.515

122.87

EX. CB.

0.30

EX. MH. RIM EL. 32.420 375 E. INV. 29.800 300 S. INV. 29.790

5.060 4.29

9.872

3.027 4.27

EX. MH. RIM EL. 32.420 375 E. INV. 29.800 300 S. INV. 29.790

EX. MH. RIM EL. 33.050 INV. 29.910

EX. CB. RIM EL. 33.049 INV. 30.710

EX. CB. RIM EL. 33.289 NE. INV. 31.450

EX. CB. RIM EL. 32.70 250 N INV. 31.515

122.87

EX. CB.

0.30

EX. MH. RIM EL. 32.420 375 E. INV. 29.800 300 S. INV. 29.790

EX. MH. RIM EL. 33.050 INV. 29.910

EX. CB. RIM EL. 33.049 INV. 30.710

EX. CB. RIM EL. 33.289 NE. INV. 31.450

EX. CB. RIM EL. 32.70 250 N INV. 31.515

122.87

EX. CB.

0.30

NO.	REVISION/DESCRIPTION	BY	DATE
SEALS			

UMA AECOM

©2006 UMA ENGINEERING LTD. ALL RIGHTS RESERVED.

DRAWN BY	DATE	CHECKED BY	APPROVED
WJ	2006.10.31	USER APPROVAL	

CITY OF WINNIPEG
 PLANNING, PROPERTY &
 DEVELOPMENT DEPARTMENT
 CIVIC ACCOMMODATIONS DIVISION
 300 - 65 GARRY ST. R3C 4K4

PROJECT
 DRAINAGE IMPROVEMENTS &
 YARD UPGRADING AT 1539 WAVERLEY ST
 PROJECT ADDRESS

SHEET TITLE
 SCHEMATIC SITE PLAN

SCALE	PROJECT NO.	SHEET NO.
1:500	0285-388-03	001

DRAWING SHEET SIZE: A0 (1189mm x 841mm) PLOT 1:1