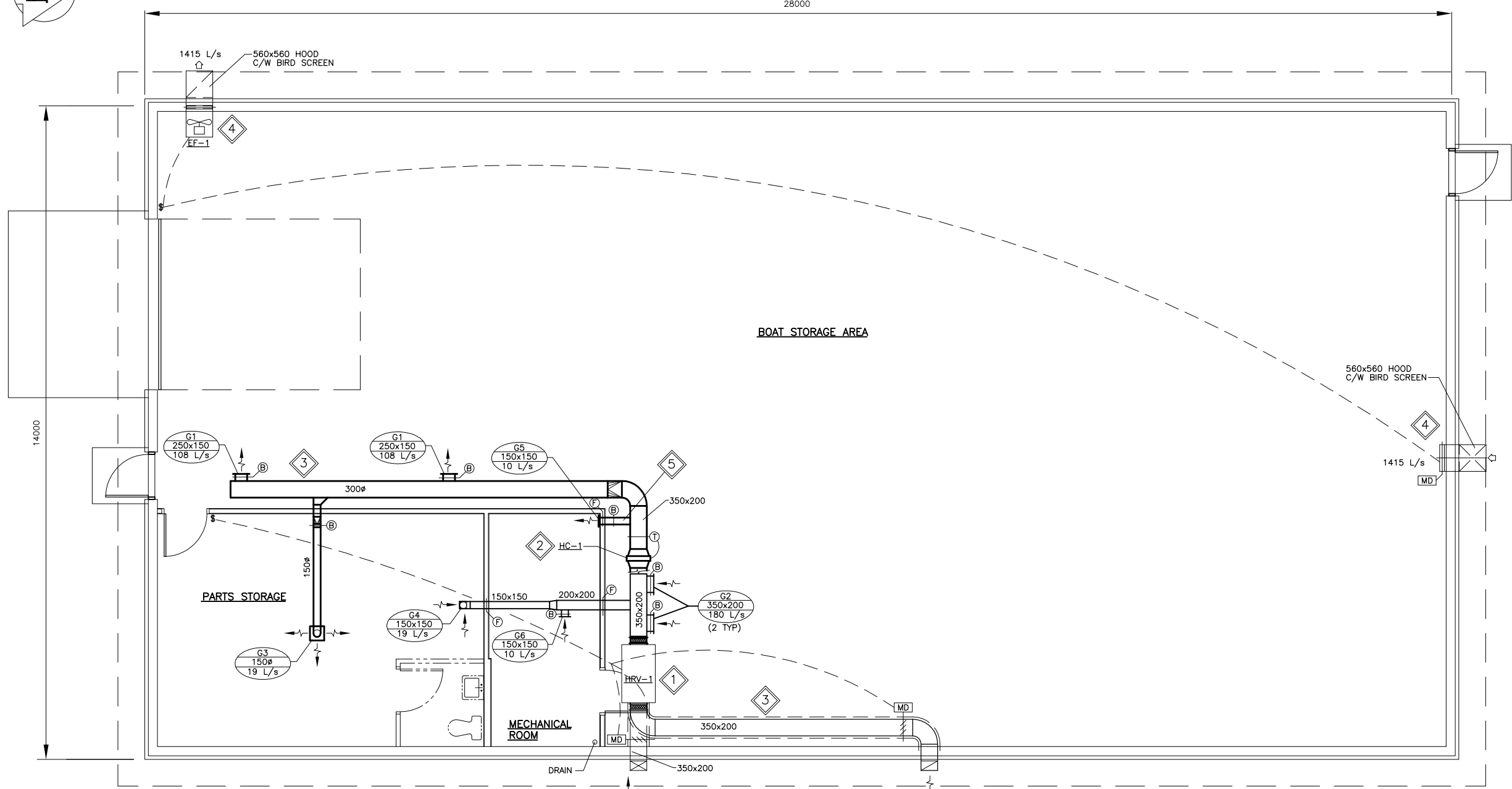




28000

14000



**GENERAL NOTES:**

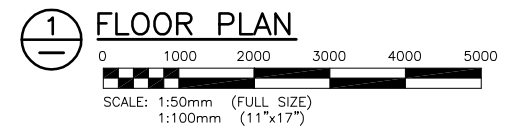
1. PERFORM WORK IN ACCORDANCE WITH ALL APPLICABLE CODES AND REGULATIONS.
2. REVIEW EQUIPMENT LOCATIONS WITH CONTRACT ADMINISTRATOR PRIOR TO INSTALLATION.
3. DUCT ROUTING INDICATED ON DRAWINGS ARE APPROXIMATE ONLY. CONFIRM IN FIELD. REROUTE DUCTING TO ELIMINATE FIELD INTERFERENCES WITH BUILDING STRUCTURES, ELECTRICAL ETC. CONFIRM CHANGES WITH CONTRACT ADMINISTRATOR.  
\*\*\* CO-ORDINATE WORK WITH OTHER TRADES \*\*\*
4. CONFORM TO SMACNA STANDARDS FOR SUPPLY AND INSTALLATION OF DUCTWORK.
5. SEAL ALL WALL PENETRATIONS AND DUCTWORK WATER AND AIR TIGHT.
6. PROVIDE ALL WALL PENETRATIONS.

**KEY NOTES:**

1. INSTALL NEW HEAT RECOVERY VENTILATOR HRV-1 AS SHOWN. PROVIDE 25# COPPER DRAIN LINE FROM HRV TO DRAIN. HRV-1 AND ASSOCIATED MOTORIZED DAMPERS SHALL BE OPERATED FROM A MANUAL WALL SWITCH. WHEN HRV IS "ON", MOTORIZED DAMPERS SHALL BE OPEN. WHEN HRV IS "OFF", MOTORIZED DAMPERS SHALL BE CLOSED. PROVIDE CONTROL WIRING.
2. INSTALL NEW SCR CONTROLLED HEATING COIL HC-1 AS SHOWN. PROVIDE DUCT MOUNTED THERMOSTAT AND CONTROLS.
3. INSTALL NEW DUCTWORK AS SHOWN. PROVIDE EXTERNAL DUCT INSULATION WHERE INDICATED.
4. INSTALL NEW SUMMER VENTILATION FAN EF-1 AND AIR INTAKE C/W MOTORIZED DAMPER AS SHOWN. PROVIDE HOODS. (FAN COME COMPLETE WITH BUILT-IN MOTORIZED DAMPER).
5. 150x150 SUPPLY DUCTWORK TO MECHANICAL ROOM IS REQUIRED FOR HEATING OPTION 1 ONLY. PRICE SEPARATELY AND INCLUDE WITH HEATING OPTION 1 PRICE.

**LEGEND:**

- G1 250x150 108 L/s — GRILLE NO., NECK SIZE, AIR FLOW
- G2 350x200 180 L/s — GRILLE NO., NECK SIZE, AIR FLOW
- G3 150x150 19 L/s — GRILLE NO., NECK SIZE, AIR FLOW
- G4 150x150 19 L/s — GRILLE NO., NECK SIZE, AIR FLOW
- G5 150x150 10 L/s — GRILLE NO., NECK SIZE, AIR FLOW
- G6 150x150 10 L/s — GRILLE NO., NECK SIZE, AIR FLOW
- (B) — BALANCE DAMPER
- (T) — THERMOSTAT
- (F) — FIRE DAMPER (1.5 HOUR C/W ACCESS DOOR)
- (MD) — MOTORIZED DAMPER
- \$ — MANUAL WALL SWITCH
- ==== EXTERNALLY INSULATED DUCTWORK
- ELECTRICAL CONTROL WIRING



GRILLE No.	E.H. PRICE DESIGNATION	COMMENTS
G1	250x150/520D/F/L/A/B15	LOUVERED SUPPLY GRILLE
G2	350x200/530D/F/L/A/B15	LOUVERED RETURN GRILLE
G3	150#/300x300/SCD/31/3C/B12	SQUARE CONE DIFFUSER
G4	150x150/80/F/A/B12	EGG CRATE RETURN (DUCTED)
G5	150x150/520D/F/L/A/B15	LOUVERED SUPPLY GRILLE
G6	150x150/530D/F/L/A/B15	LOUVERED RETURN GRILLE

KGS FILE NO.: P:\PROJECTS\2006\06-0107-17\MECH\DWGS\06-0107-17M004.dwg  
PLOT SIZE: 1:1



NO.	REVISIONS	DATE	BY
0	ISSUED FOR TENDER	NOV.16/06	PSS

**KGS GROUP** CONSULTING ENGINEERS & PROJECT MANAGERS  
WINNIPEG (204) 896-1209  
THUNDER BAY (807) 345-2233

DESIGNED BY PSS	CHECKED BY RBB
DRAWN BY VJH	APPROVED BY
HOR. SCALE	RELEASED FOR CONSTRUCTION
VERTICAL AS NOTED	
DATE NOV. 2006	DATE



CONSULTANT DRAWING NO. 06-0107-17M4

**THE CITY OF WINNIPEG**  
PLANNING PROPERTY AND DEVELOPMENT  
Winnipeg SERVICES DEPARTMENT

**RIVER PATROL BOAT STORAGE BUILDING**  
VENTILATION PLAN

SHEET 4 OF 8
CAD FILE DRAWING NUMBER 06-107-17M004.dwg
PROJECT NUMBER 2005-081