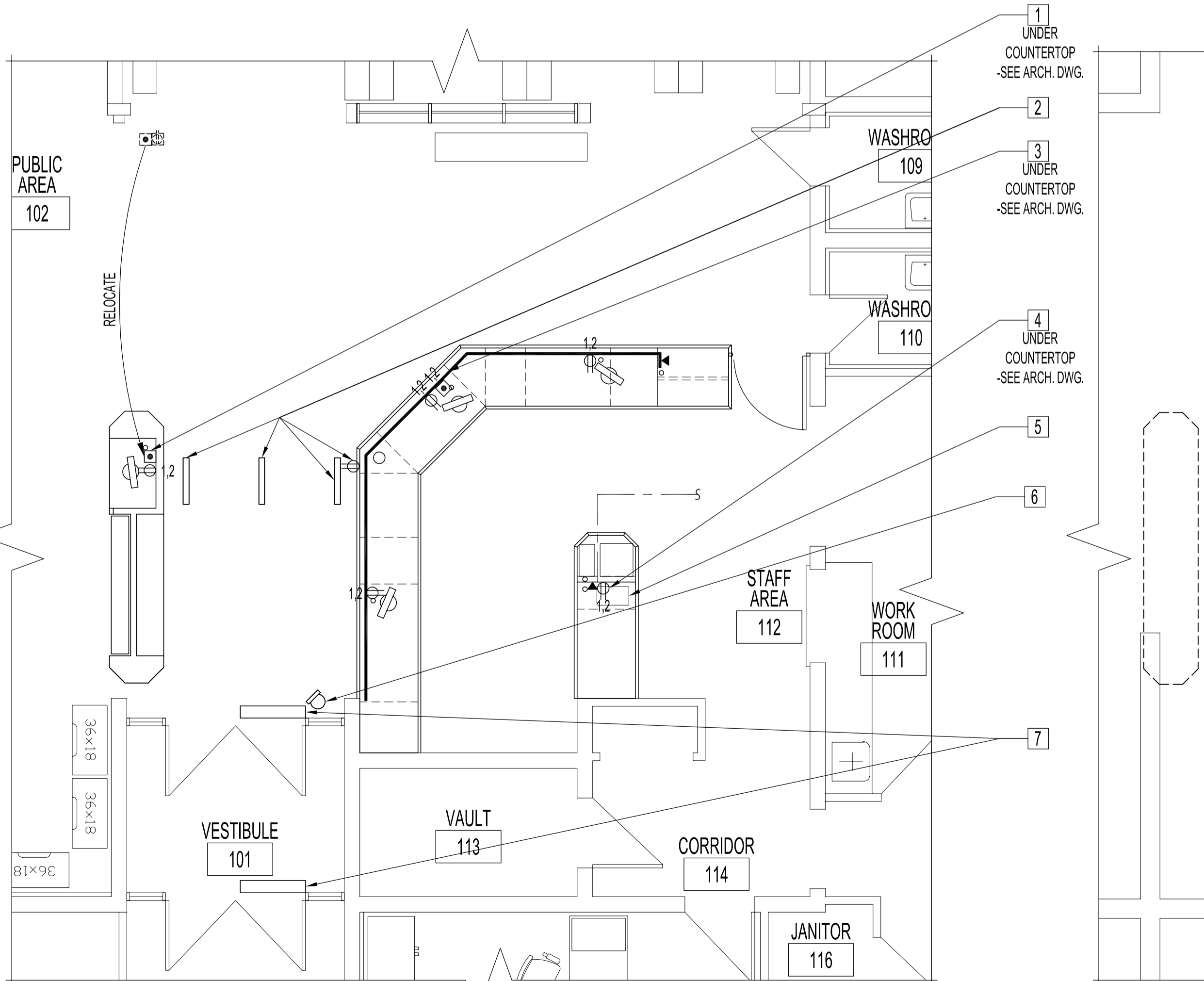


PARTIAL MAIN FLOOR PLAN - ELECTRICAL DEMOLITION  
SCALE: 1/4"=1'-0"



PARTIAL MAIN FLOOR PLAN - ELECTRICAL RENOVATION  
SCALE: 1/4"=1'-0"

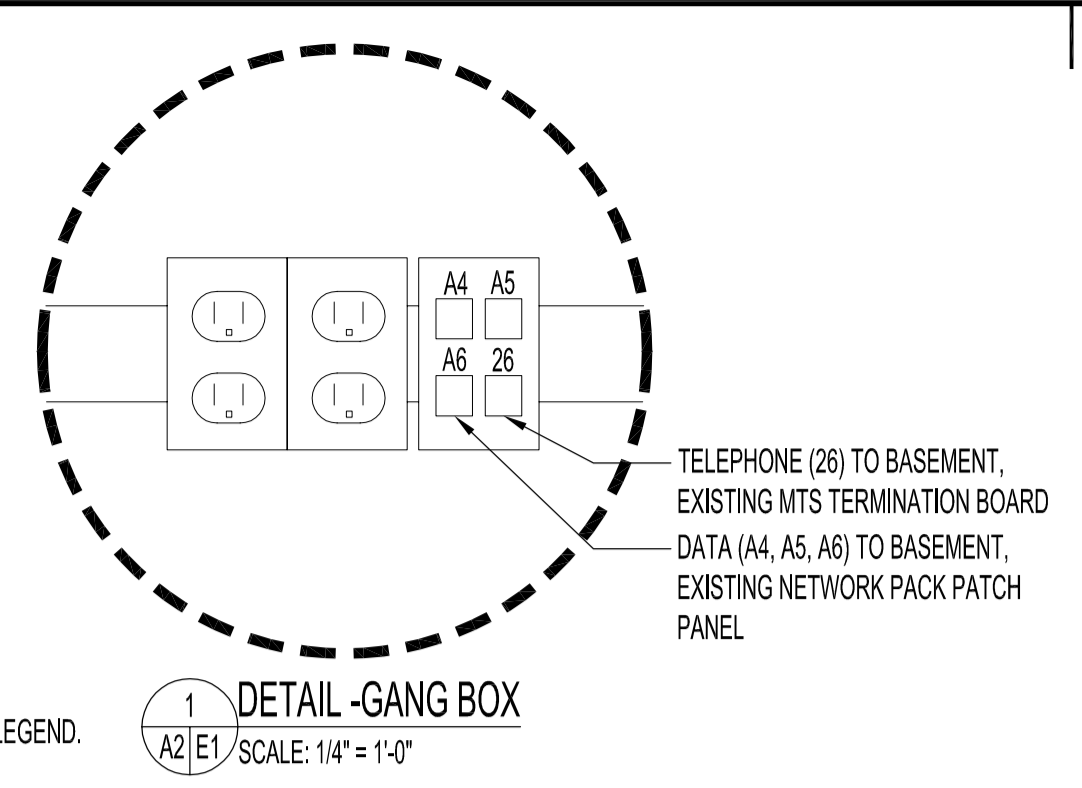
**ELECTRICAL DEMOLITION NOTES**

- 1 PHONE DISCONNECTION.
- 2 DISCONNECT ALL RECEPTACLES & COMPUTER CONNECTIONS & RELOCATE AS PER ELECTRICAL RENOVATION.
- 3 DISCONNECT EXISTING INTERCOM BOX & RELOCATE AS PER ELECTRICAL RENOVATION.
- 4 EXISTING WALL DUPLEX TO REMAIN.
- 5 DISCONNECT POWER DOOR OPERATOR PEDESTAL & RELOCATE AS PER ELECTRICAL RENOVATION.
- 6 DISCONNECT & REMOVE FLOOR MOUNTED SECURITY GATES & RECEPTACLE & RELOCATE AS PER ELECTRICAL RENOVATION.

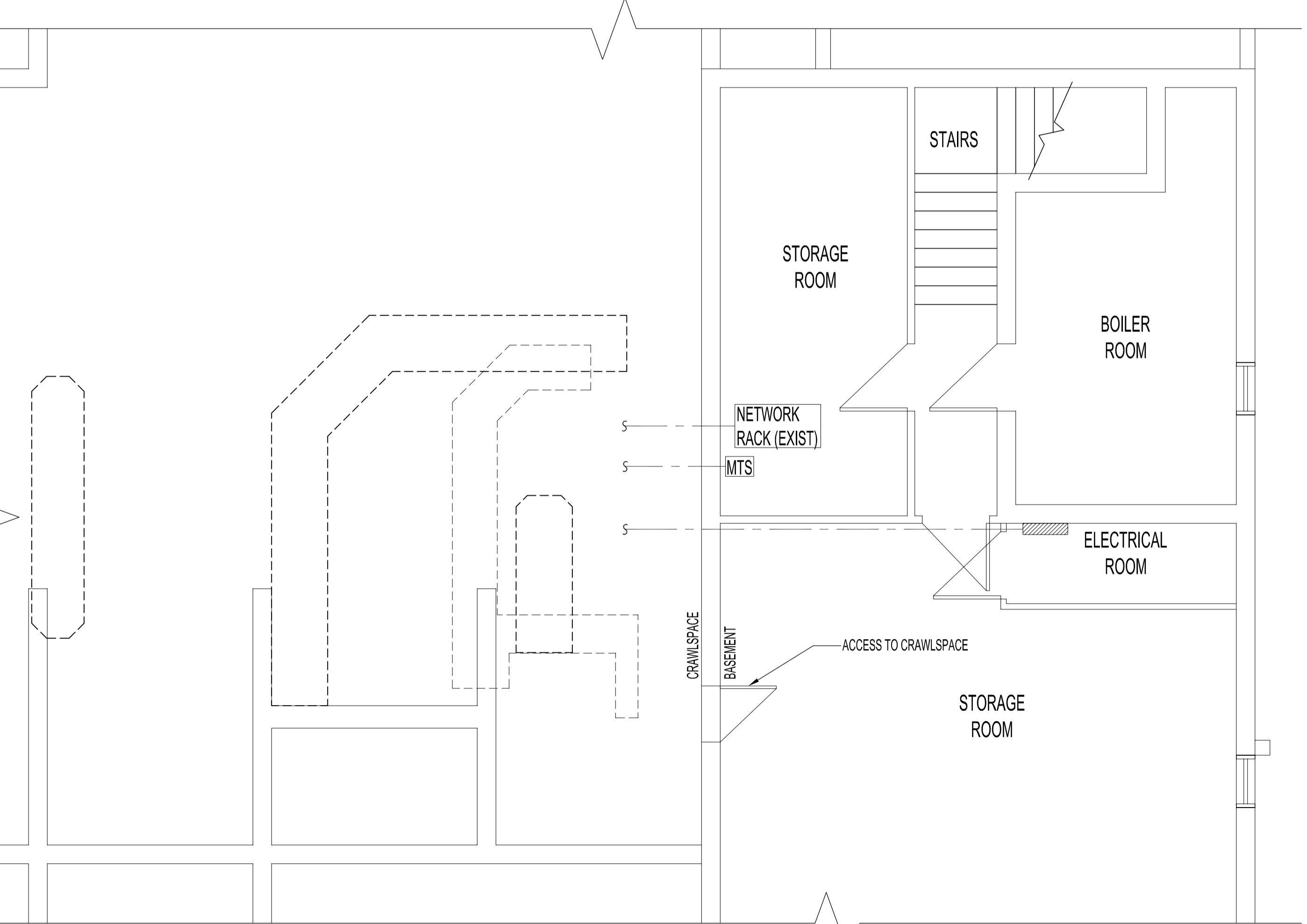
**ELECTRICAL RENOVATION NOTES**

- 1 SUPPLY & INSTALL DOUBLE-GANG ELECTRICAL BOX & SINGLE 2 PORT DATA BOX. SEE ARCHITECTURAL DWG. FOR LOCATION. SEE ELECTRICAL LEGEND.
- 2 NEW LOCATION OF SECURITY GATES & SECURITY GATE DUPLEX RECEPTACLE. SEE ARCHITECTURAL FOR LOCATION. RECEPTACLE TO BE RECESSED INTO CIRCULATION COUNTER.
- 3 SUPPLY & INSTALL DOUBLE-GANG ELECTRICAL BOX & 4-PORT COMMUNICATION BOX. SEE ELECTRICAL LEGEND & GANG BOX DETAIL.
- 4 SUPPLY & INSTALL DOUBLE-GANG ELECTRICAL BOX & SINGLE 2-PORT DATA BOX. SEPARATE CIRCUIT FROM OTHER ELECTRICAL OUTLETS. SEE ELECTRICAL LEGEND.
- 5 NEW LOCATION OF INTERCOM & MICROPHONE. SEE ELEVATIONS. RELOCATE EXISTING SPEAKER TERMINAL PANEL FROM EXISTING FRONT COUNTER TO THIS LOCATION.
- 6 NEW LOCATION OF ELECTRONIC HANDICAP POWER DOOR OPERATOR.
- 7 ADJUST EXISTING POWER DOOR OPERATOR TO FUNCTION WITH POWER-ASSIST MODE.

ELECTRICAL LEGEND	
---	DENOTES DEMOLITION
⊖	DUPLEX RECEPTACLE
⊖	DUPLEX RECEPTACLE (FLOOR MOUNT)
⊖ 1,2	MULTI-DUPLEX RECEPTACLE (1,2 DENOTES 1-SINGLE, 2-DUPLEX GANG BOX) -MAXIMUM 2 WORKSTATIONS PER CIRCUIT -FOR NON-METALLIC SURFACE RACEWAY INSTALLATION. COLOUR-OFFICE WHITE HUBBELL MODEL MEDIATRAX PW2 TWO-CHANNEL, SINGLE PIECE SYSTEM OR EQUIVALENT. COMPLETE WITH CONNECTORS, ALL RACEWAY FITTINGS, ADAPTERS & FACE PLATES (SUPPLY & INSTALL).
⊖ 1,2	COMMUNICATION -DUPLEX (1,2 DENOTES 1-SINGLE, DOUBLE GANG BOX) -FOR NON-METALLIC SURFACE RACEWAY INSTALLATION. COLOUR-OFFICE WHITE HUBBELL MODEL MEDIATRAX PW2 TWO-CHANNEL, SINGLE PIECE SYSTEM OR EQUIVALENT. COMPLETE WITH CONNECTORS, ALL RACEWAY FITTINGS, ADAPTERS & FACE PLATES (SUPPLY & INSTALL). -FIRST GANG BOX HAS 4-PORT DATA USING ONLY 3 PORTS, 4TH PORT TO BE SPARE. RECONNECT ALL DATA TO EXISTING CONNECTIONS ON PATCH PANEL IN BASEMENT NETWORK RACK WITH NEW CAT 5 CABLES, CONNECTORS & FITTINGS. -SECOND GANG BOX HAS 4-PORT FOR TELEPHONE. SUPPLY & INSTALL. ONLY ONE PORT IS CONNECTED.
⊖	2-PORT SURFACE HOUSING, SUPPLY & INSTALL. RECONNECT TO EXISTING PATCH PANEL PORT IN BASEMENT NETWORK RACK WITH NEW CABLE, CONNECTORS & FITTINGS.
⬅	TELEPHONE, CONNECT TO NEW BOX OR HOUSING SHOWN.



1 DETAIL -GANG BOX  
A2/E1 SCALE: 1/4"=1'-0"



PARTIAL BASEMENT FLOOR & PARTIAL CRAWL SPACE PLAN -PANEL LOCATIONS  
SCALE: 1/4"=1'-0"

**NOTES :**

THESE DRAWINGS SHALL NOT BE SCALED.

THE CONTRACTOR SHALL VISIT THE SITE AND SATISFY ONESELF ALL DIMENSIONS, DATUM, AND DETAILED INFORMATION SHOWN ARE CORRECT.

THE CONTRACTOR IS TO REVIEW AND CO-ORDINATE ALL ARCHITECTURAL, MECHANICAL, ELECTRICAL AND STRUCTURAL DRAWINGS FOR ADDITIONAL OPENINGS THROUGH FLOORS, WALLS, AND CEILINGS FOR DUCT, PIPE & ELECTRICAL RISERS AND ALL OPENINGS NOT SHOWN ON DRAWINGS.

ALL OPENINGS THROUGH FIRE ASSEMBLIES ARE TO BE FIRE STOPPED AND SEALED WITH ULC APPROVED FIRE STOPPING TO MAINTAIN THE INTEGRITY OF THE FIRE SEPARATION, AND PROVIDE A SMOKE-TIGHT BARRIER.

ALL PRODUCTS AND MATERIALS TO BE USED AND INSTALLED SHALL CONFORM WITH MANUFACTURER'S SPECIFICATIONS & APPLICABLE CODES.

THE CONTRACTOR SHALL BE RESPONSIBLE TO PATCH AND MAKE GOOD ALL EXISTING CONSTRUCTION AFFECTED BY THE REMOVAL OF ALL ITEMS FORMING THE PART OF THE RENOVATION WORK.

WHERE NEW FLOORING AND BASE IS TO BE INSTALLED IN EXISTING AREAS (REFER TO FLOOR PLANS). THE EXISTING FLOORING SURFACE AND BASE MUST BE REMOVED, UNLESS OTHERWISE NOTED. ALL FLOOR SURFACES SHALL BE PREPARED IN ACCORDANCE TO MANUFACTURER'S RECOMMENDATIONS FOR INSTALLATION OF NEW FLOOR.

WHERE PAINTING OF EXISTING WALLS IS INDICATED ON THE ROOM SCHEDULE, THESE WALLS MUST BE CLEANED OF ANY EXISTING WALL COVERING, PATCHED & PREPARED TO ACCEPT NEW MATERIAL, UNLESS OTHERWISE NOTED.

SUPPLY & INSTALL LAMACOID NAME PLATES ON ALL GANG BOXES, BOXES, PANEL BOARDS & TRIM PLATES. A NEW PANEL SCHEDULE SHALL BE TYPED & INSERTED TO INSIDE OF ASSOCIATED PANEL DOOR SLEEVE PROTECTOR.

NO CABLING OR WIRING SHALL RUN THROUGH ENCLOSED "BOXED BAG HOLDER" UNLESS ENCLOSED AND MOUNTED SECURELY TO CABINET. SEE ARCHITECTURAL DRAWING.

ALL ELECTRICAL, DATA, COMMUNICATION COMPONENTS & RENOVATIONS SHALL BE INSTALLED & TESTED IN ACCORDANCE WITH THE LATEST EDITIONS OF BUILDING CODES & ELECTRICAL CODES.

NO.	REVISION/DESCRIPTION	BY	DATE
SEALS			
DRAWN BY: MMK DATE: 2005.10.21			
CHECKED BY: USER APPROVAL			
APPROVED			
CITY OF WINNIPEG PLANNING, PROPERTY & DEVELOPMENT DEPARTMENT CIVIC ACCOMMODATIONS DIVISION 300 - 65 GARRY ST. R3C 4K4			
PROJECT FORT GARRY LIBRARY CIRCULATION COUNTER			
1360 PEMBINA HIGHWAY			
SHEET TITLE PARTIAL MAIN FLOOR PLAN, BASEMENT & CRAWLSPACE ELECTRICAL			
SCALE AS SHOWN	PROJECT NO. 2005-044	SHEET NO. E1	