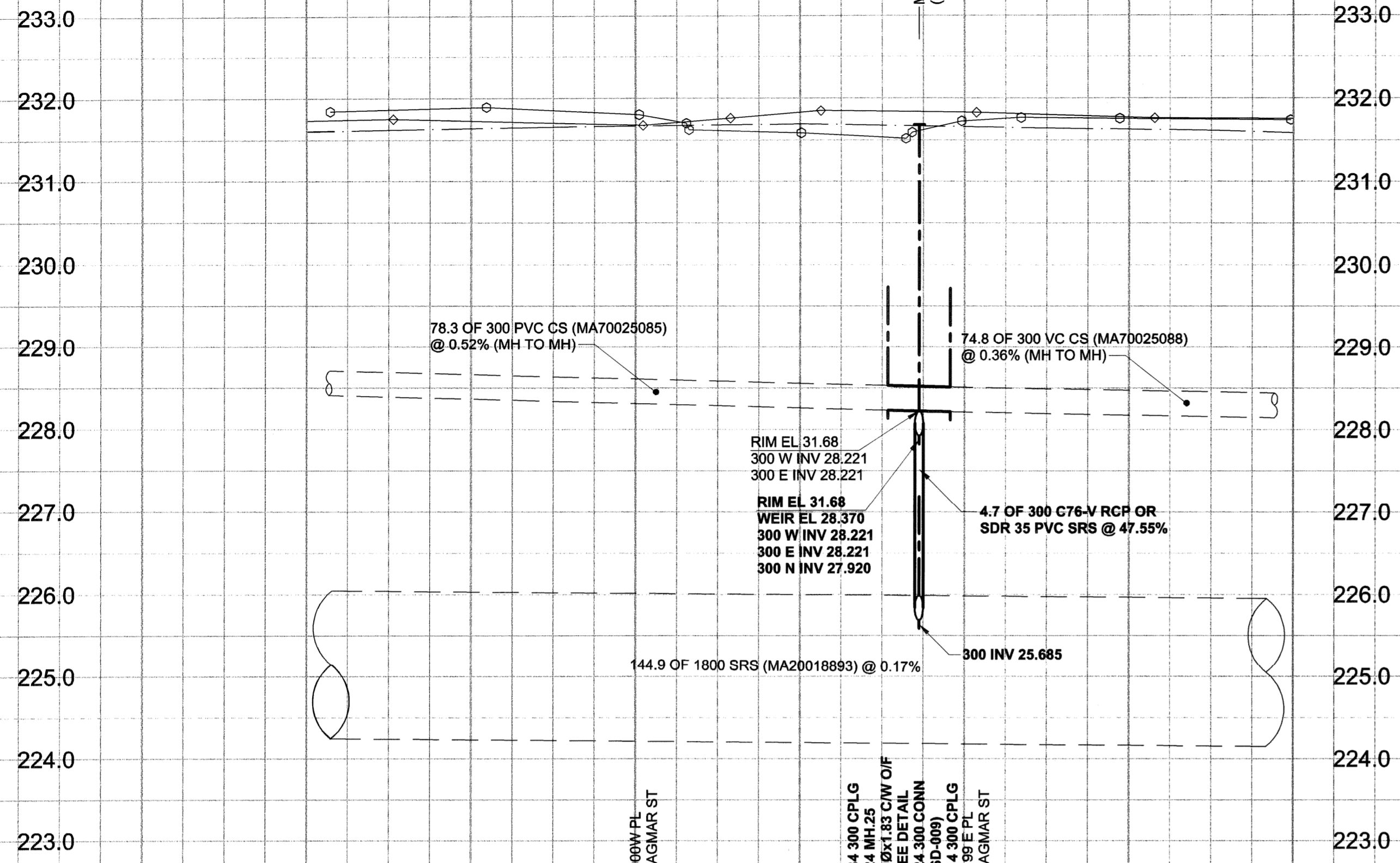


D SIZE 22" x 34" (569mm x 864mm)

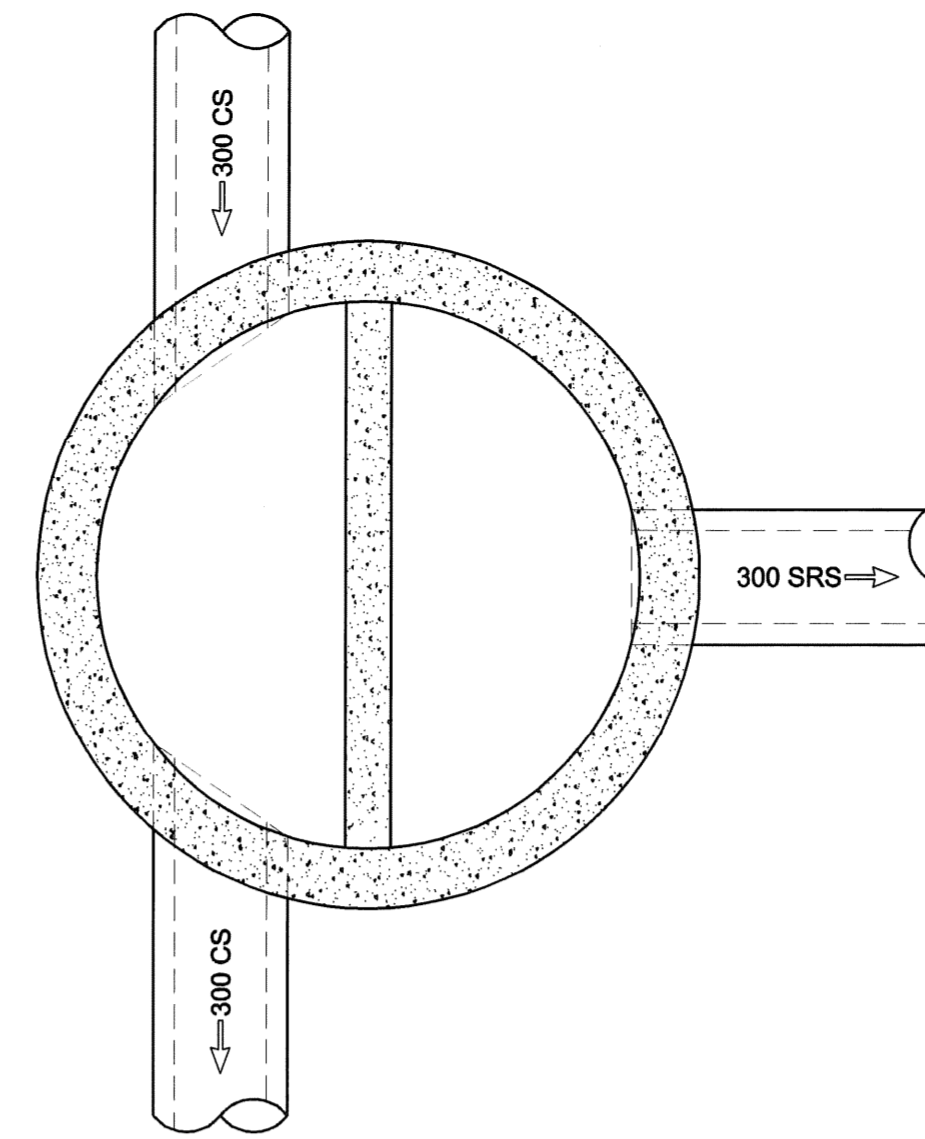
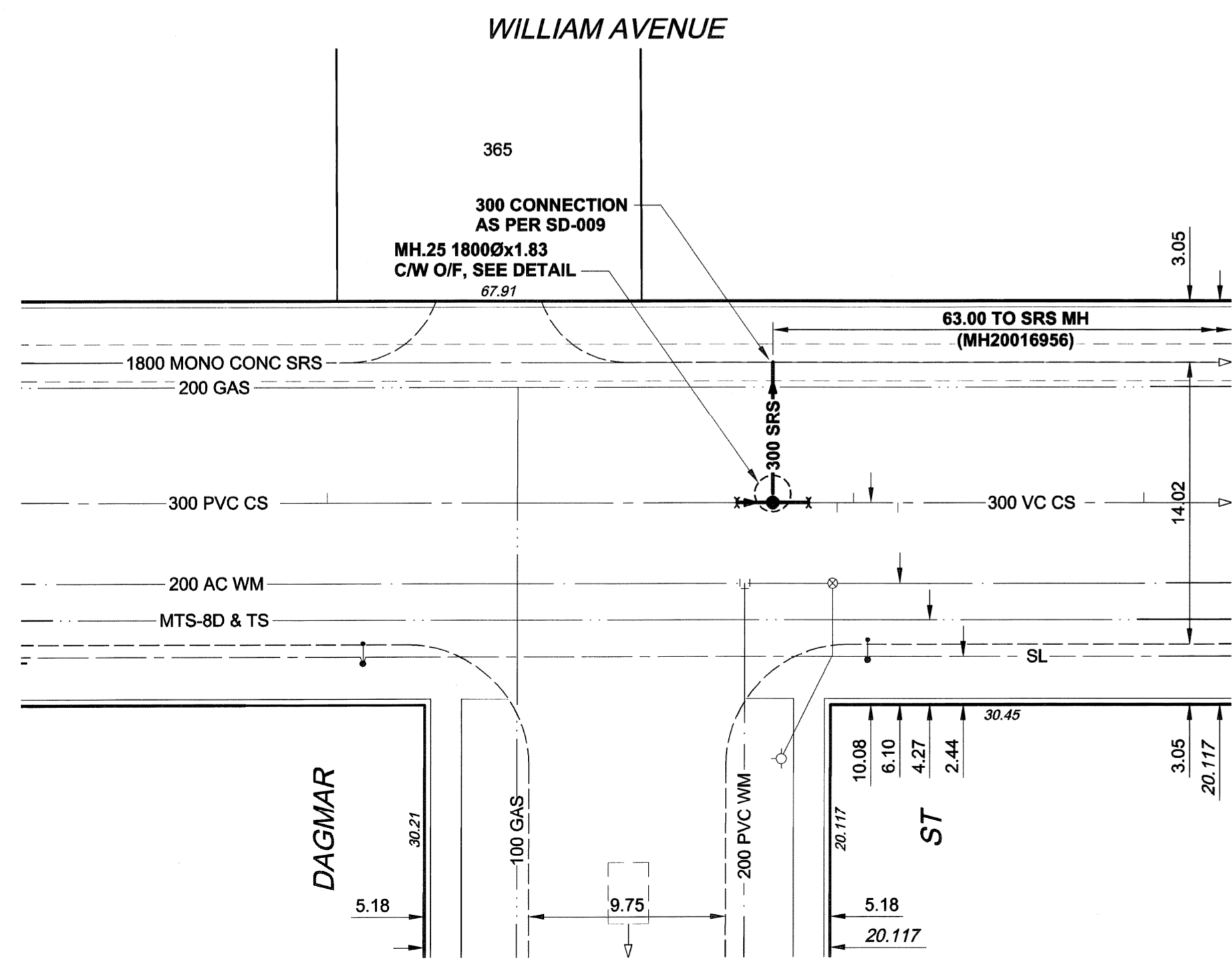
PLOT: 06/11/28 2:51:35 PM

UMA FILE NAME: D265-177-04\_01-C-1013\_RX.dwg Saved By: lberard

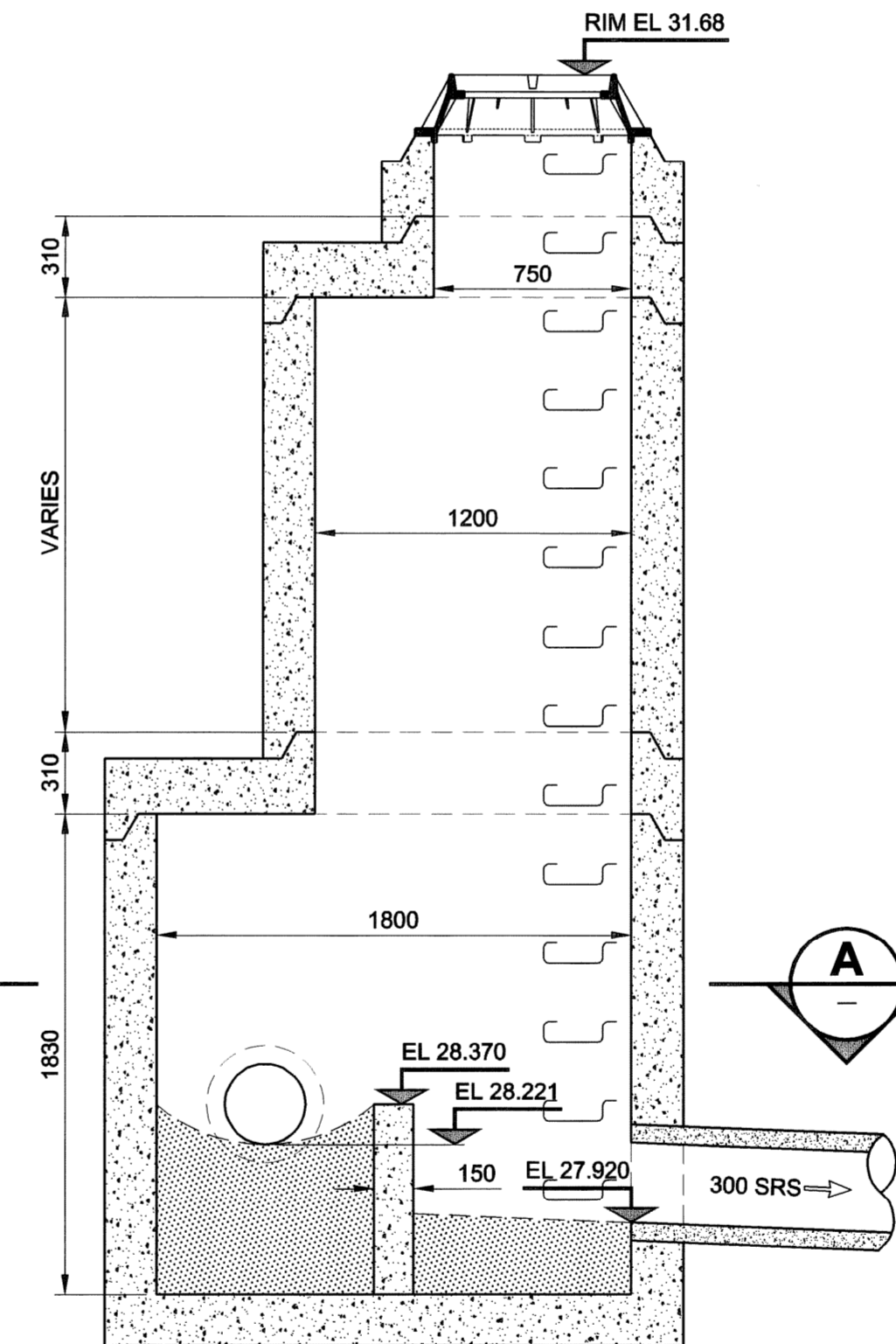
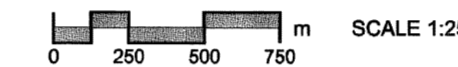
EXISTING FEATURES



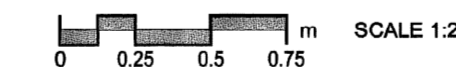
CHAINAGE ALONG S PL



SECTION A



MANHOLE 25 OVERFLOW DETAIL



TYPICAL MANHOLE REQUIREMENTS AS PER SD-010

**WARNING**

IF POWER EQUIPMENT OR EXPLOSIVES ARE TO BE USED FOR EXCAVATION ON THIS PROJECT, THE CONTRACTOR MUST:

- 1) NOTIFY THE GAS COMPANY OF THE PROPOSED LOCATION OF EXCAVATION.
- 2) TAKE PRECAUTION TO AVOID DAMAGE TO GAS COMPANY INSTALLATIONS.

SEE PROVINCIAL REGULATION 140/92 FOR DETAILS

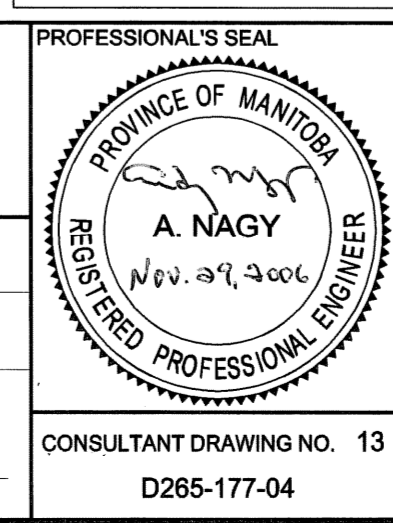
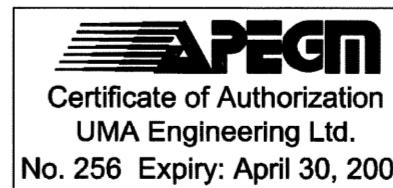
150 mm WM	WATERMAIN	150 mm WM	EXISTING	LEGEND - PLAN	NEW	EXISTING	LEGEND - PROFILE	NEW
	HYDRANT							
	LAND DRAINAGE SEWER							
	SURVEY BAR							
	LAND DRAINAGE SEWER							
	SURVEY BAR							
	LAND DRAINAGE SEWER							
	SURVEY BAR							

**LOCATION APPROVED UNDERGROUND STRUCTURES**

NOTE: LOCATION OF UNDERGROUND STRUCTURES AS SHOWN ARE BASED ON THE BEST INFORMATION AVAILABLE. BUT NO GUARANTEE IS GIVEN THAT ALL EXISTING UTILITIES ARE SHOWN OR THAT THE GIVEN LOCATIONS ARE EXACT. CONFIRMATION OF EXISTENCE AND EXACT LOCATION OF ALL SERVICES MUST BE OBTAINED FROM THE INDIVIDUAL UTILITIES BEFORE PROCEEDING WITH CONSTRUCTION.

NO.	REVISIONS	DATE	BY
0	ISSUED FOR CONSTRUCTION	06/11/28	KMB

DESIGNED BY	GEB / DME	CHECKED BY	APPROVED BY
DRAWN BY	KMB		
HOR. SCALE	1:250	RELEASED FOR CONSTRUCTION	
VERT. SCALE	1:50		
DATE	06/11/23		



**THE CITY OF WINNIPEG WATER AND WASTE DEPARTMENT**

**ALEXANDER/BANNATYNE COMBINED SEWER RELIEF CONTRACT 4**

WILLIAM AVENUE  
40m E OF ELLEN STREET  
TO DAGMAR STREET

SHEET 13 OF 15  
CITY DRAWING NUMBER LD-3445  
REV 0

CONSULTANT DRAWING NO. 13  
D265-177-04

BID OPPORTUNITY NO. 690-2006

- CONSTRUCTION NOTES:**
1. FOR DETAILED TEST HOLE INFORMATION, SEE SPECIFICATION.
  2. THE LOCATION OF ALL SERVICES IS TO BE CONFIRMED IN THE FIELD.
  3. INSTALL NEW SEWERS AND CATCHBASIN LEADS BY TRENCHLESS METHODS WHEREVER POSSIBLE.
  4. RENEW/REHABILITATE CATCHBASINS & RENEW CATCHBASIN LEADS WHERE NOTED.

**METRIC**  
WHOLE NUMBERS INDICATE MILLIMETRES  
DECIMALIZED NUMBERS INDICATE METRES



© 2005 UMA ENGINEERING LTD. ALL RIGHTS RESERVED.