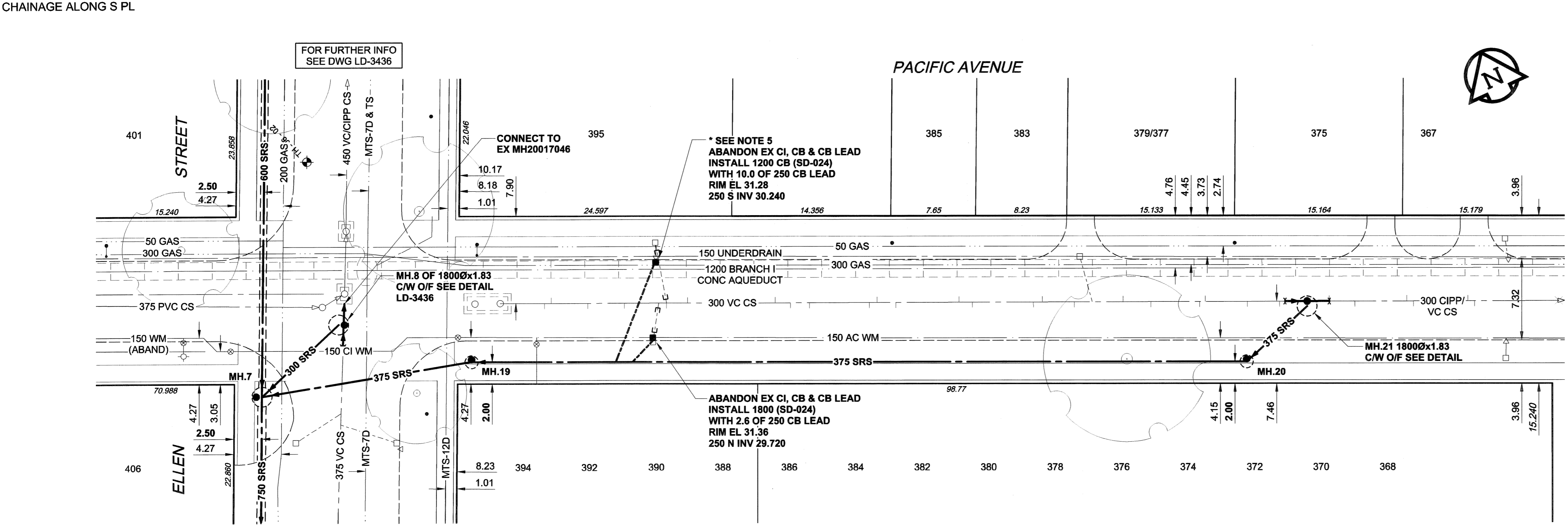
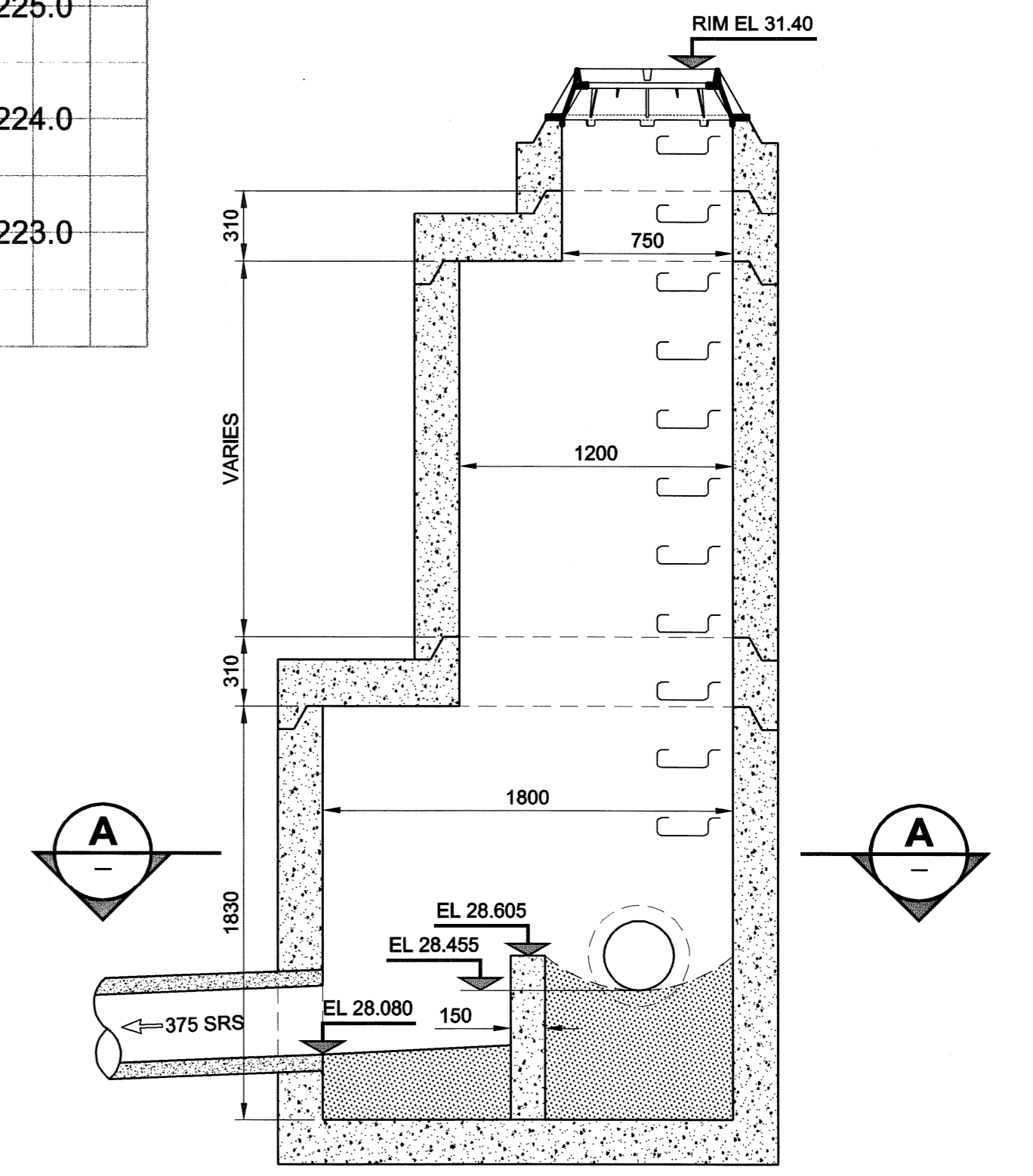
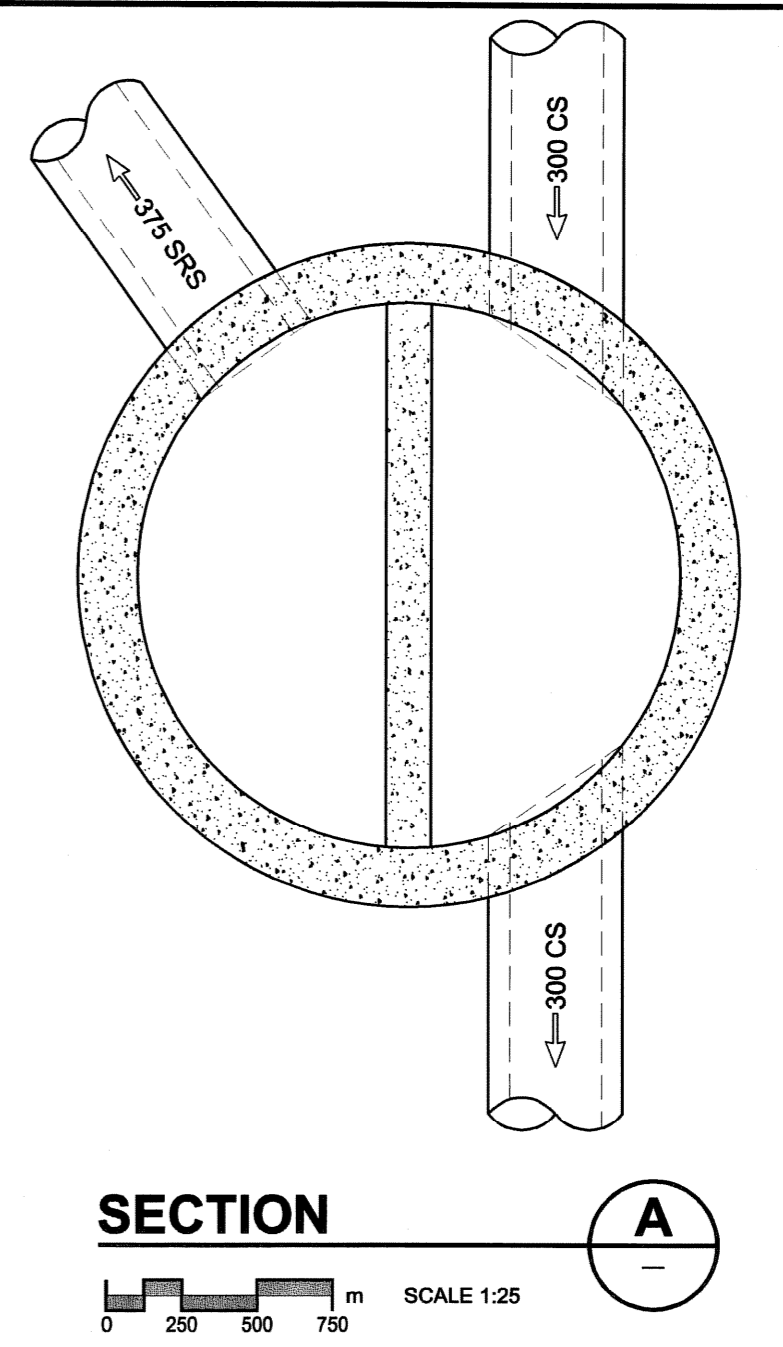
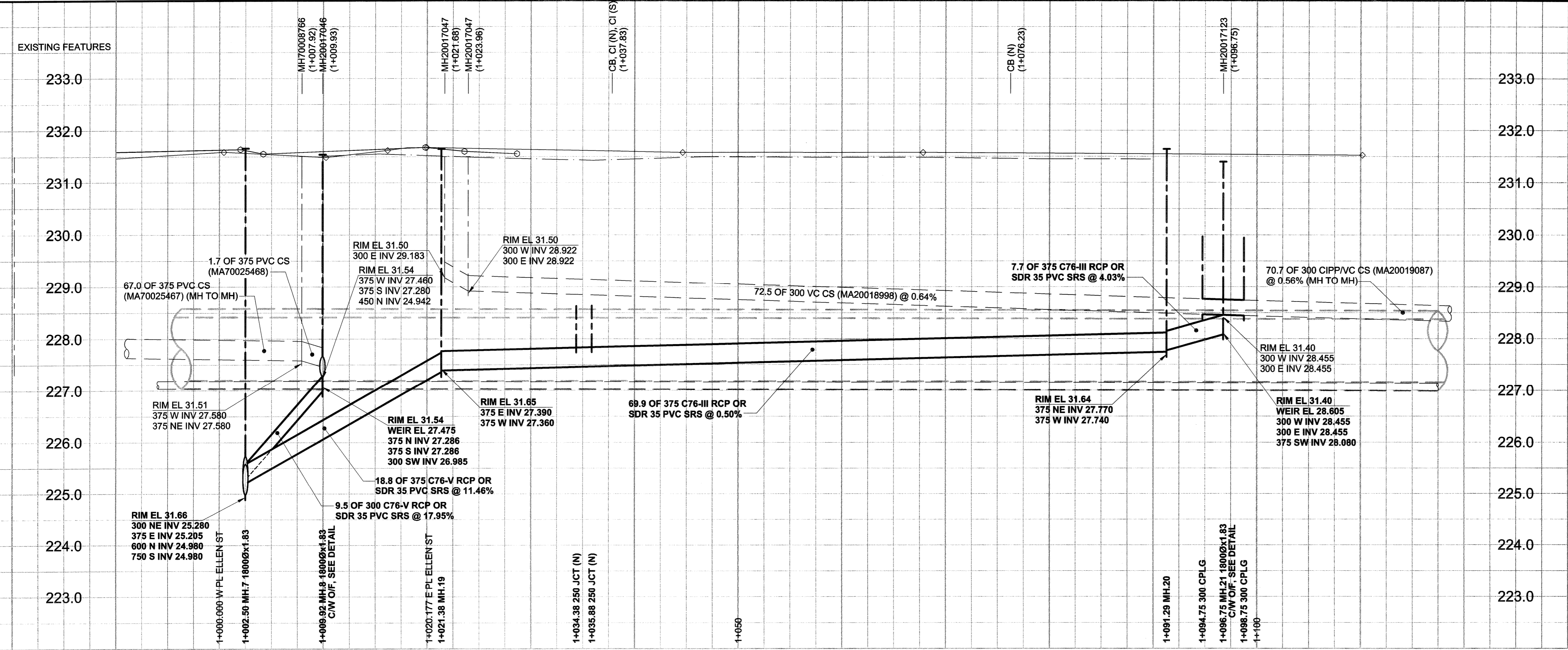


D SIZE 22" x 34" (569mm x 864mm) PLOT: 06/11/29 2:53:02 PM UMA FILE NAME: D265-177-04_01-C-1010_RX.dwg Saved By: lbarand



WARNING

IF POWER EQUIPMENT OR EXPLOSIVES ARE TO BE USED FOR EXCAVATION ON THIS PROJECT, THE CONTRACTOR MUST:

- NOTIFY THE GAS COMPANY OF THE PROPOSED LOCATION OF EXCAVATION.
- TAKE PRECAUTION TO AVOID DAMAGE TO GAS COMPANY INSTALLATIONS.

SEE PROVINCIAL REGULATION 140/92 FOR DETAILS

150 mm WM	WATERMAIN	150 mm WM	CURB STOP	150 mm WM	WATERMAIN	150 mm WM	LOCATION APPROVED UNDERGROUND STRUCTURES
⊕	HYDRANT	⊕	REDUCER	⊕	HYDRANT	⊕	SUPR. U/G STRUCTURES DATE COMMITTEE
⊗	VALVE	⊗	COUPLING	⊗	VALVE	⊗	NOTE: LOCATION OF UNDERGROUND STRUCTURES AS SHOWN ARE BASED ON THE BEST INFORMATION AVAILABLE. BUT NO GUARANTEE IS GIVEN THAT ALL EXISTING UTILITIES ARE SHOWN OR THAT THE GIVEN LOCATIONS ARE EXACT. CONFIRMATION OF EXISTENCE AND EXACT LOCATION OF ALL SERVICES MUST BE OBTAINED FROM THE INDIVIDUAL UTILITIES BEFORE PROCEEDING WITH CONSTRUCTION.
⊙	LAND DRAINAGE SEWER	⊙	ANODE	⊙	LAND DRAINAGE SEWER	⊙	
⊚	WASTE WATER SEWER	⊚	HYDRO	⊚	WASTE WATER SEWER	⊚	
○	MANHOLE	○	MTS	○	PAVEMENT CROWN	○	
□	CATCH BASIN	□	GAS	□	N/W PROPERTY LINE	□	
△	CURB INLET	△	TESTHOLE	△	S/E PROPERTY LINE	△	
▭	CULVERT	▭	LAMP STANDARD	▭	N/W GUTTER	▭	
—	PIPE ABANDONMENTS	—	TREE	—	S/E GUTTER	—	
⊕	SURVEY BAR	⊕		⊕		⊕	
⊕	EXISTING	⊕	LEGEND - PLAN	⊕	LEGEND - PROFILE	⊕	
⊕	NEW	⊕		⊕		⊕	

NO.	ISSUED FOR CONSTRUCTION	REVISIONS	DATE	BY
0	ISSUED FOR CONSTRUCTION		06/11/28	KMB

DESIGNED BY	APPROVED BY	HOR. SCALE	VERT. SCALE	DATE
GEB / DME	KMB	1:250	1:50	06/11/29

METRIC

WHOLE NUMBERS INDICATE MILLIMETRES
DECIMALIZED NUMBERS INDICATE METRES

UMA | AECOM

© 2005 UMA ENGINEERING LTD. ALL RIGHTS RESERVED.

DESIGNED BY: GEB / DME
APPROVED BY: KMB
DATE: 06/11/29

THE CITY OF WINNIPEG WATER AND WASTE DEPARTMENT

ALEXANDER/BANNATYNE COMBINED SEWER RELIEF CONTRACT 4

PACIFIC AVENUE
ELLEN STREET
TO 155m WEST OF PAULIN STREET

SHEET 10 OF 15
CITY DRAWING NUMBER LD-3442
REV 0

PROFESSIONAL'S SEAL
A. NAGY
REGISTERED PROFESSIONAL ENGINEER
CONSULTANT DRAWING NO. 10
D265-177-04

BID OPPORTUNITY NO. 690-2006