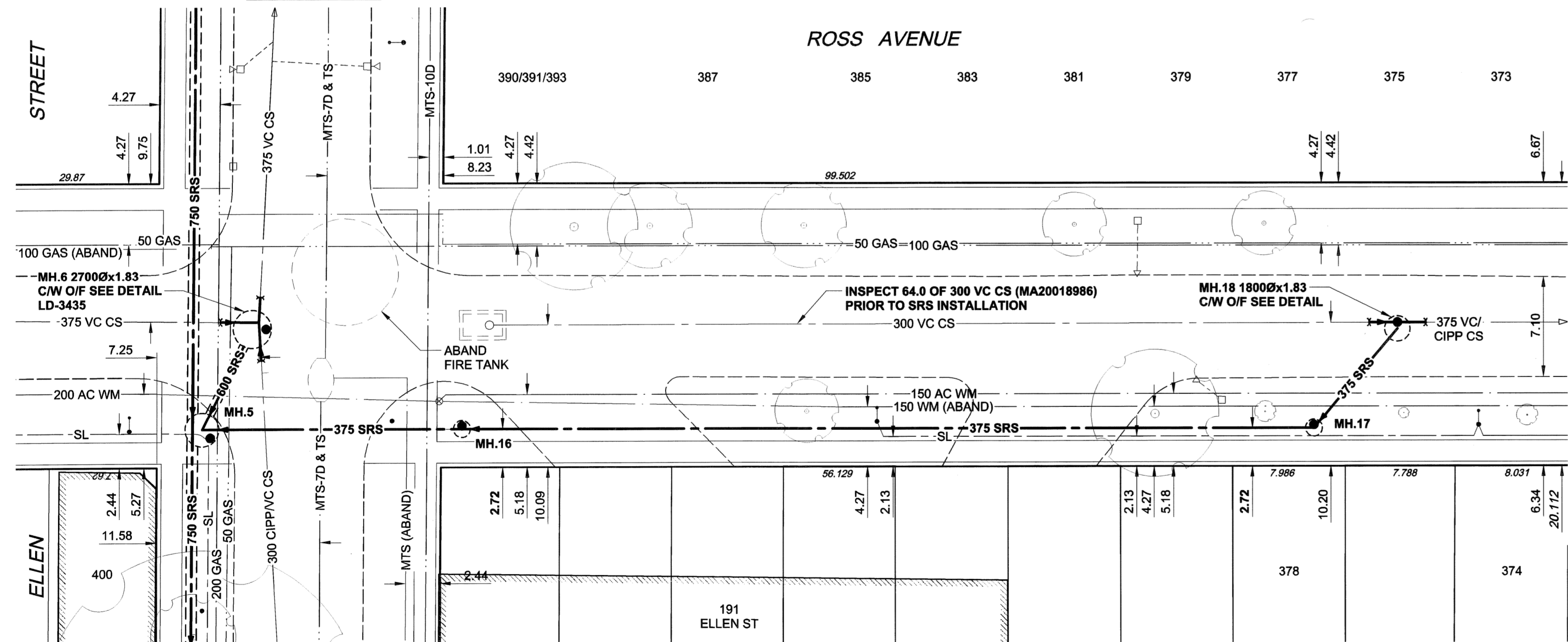
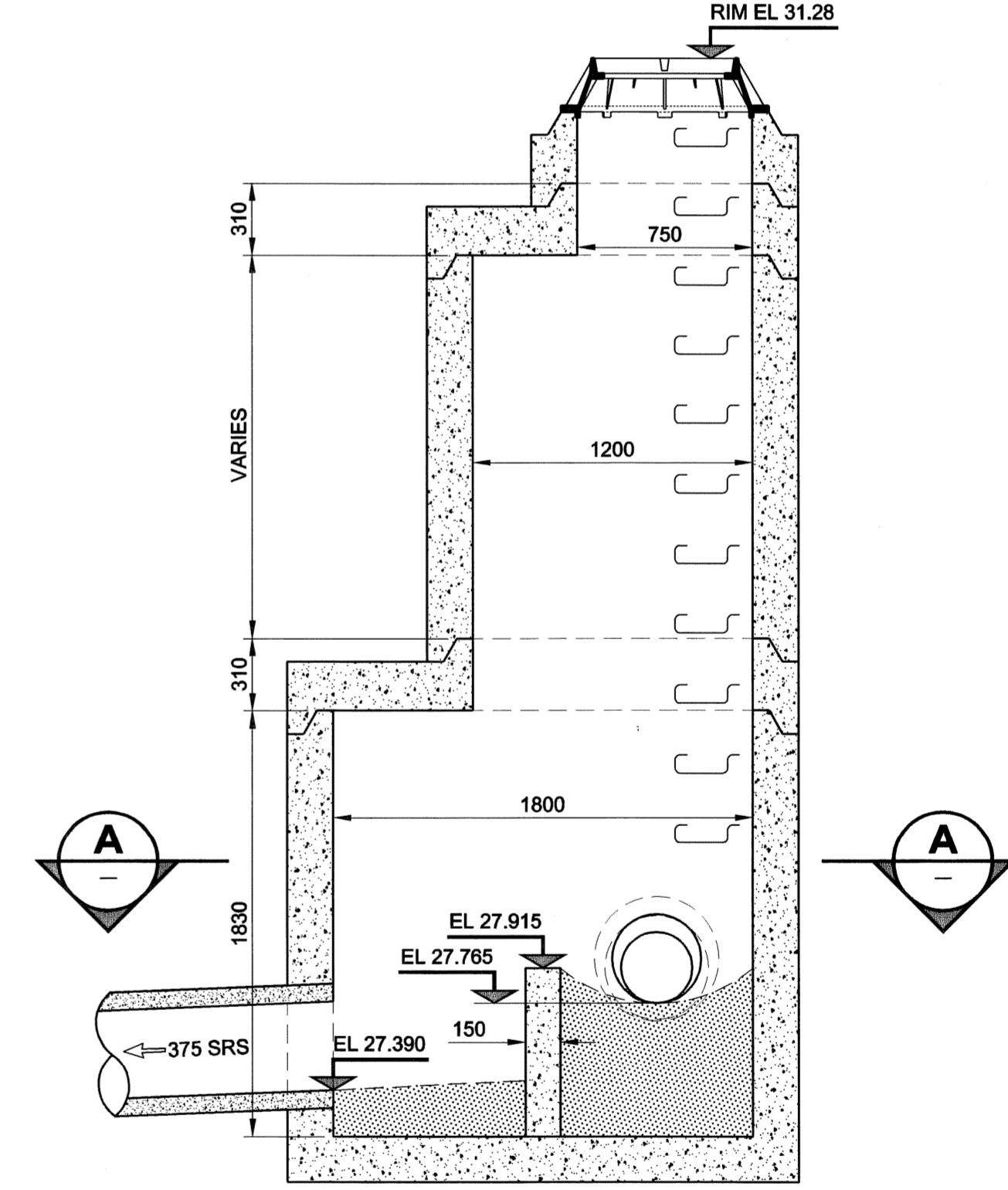
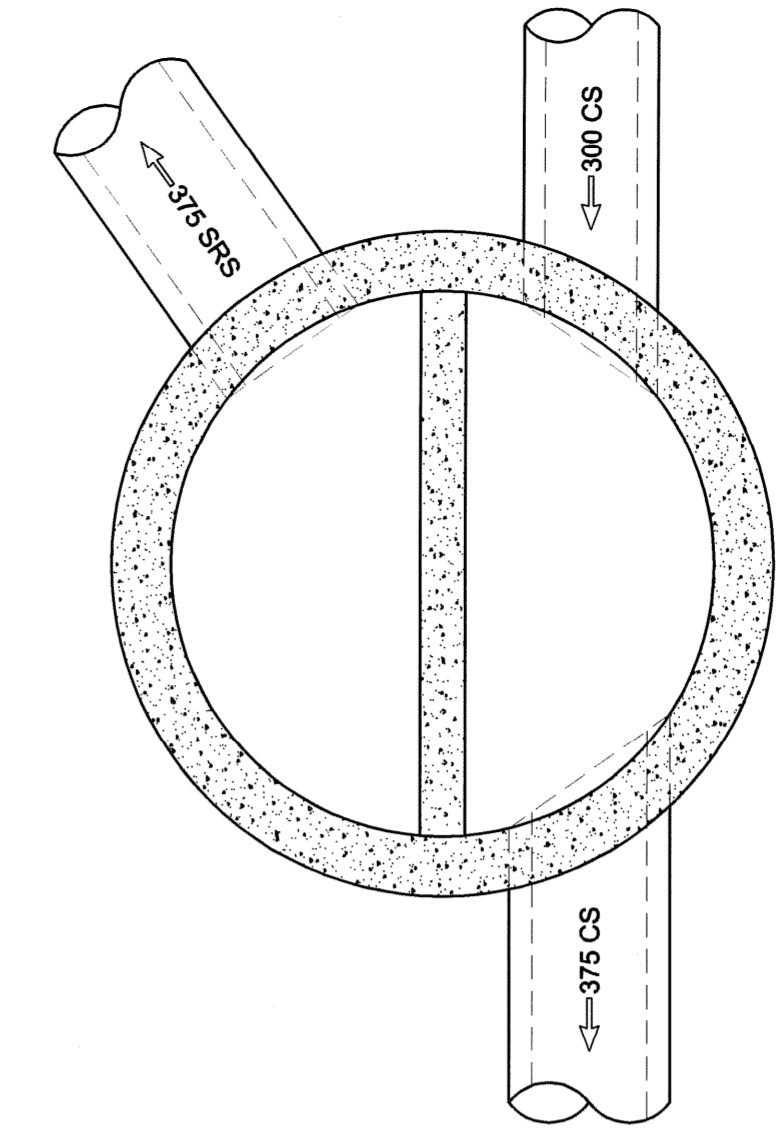
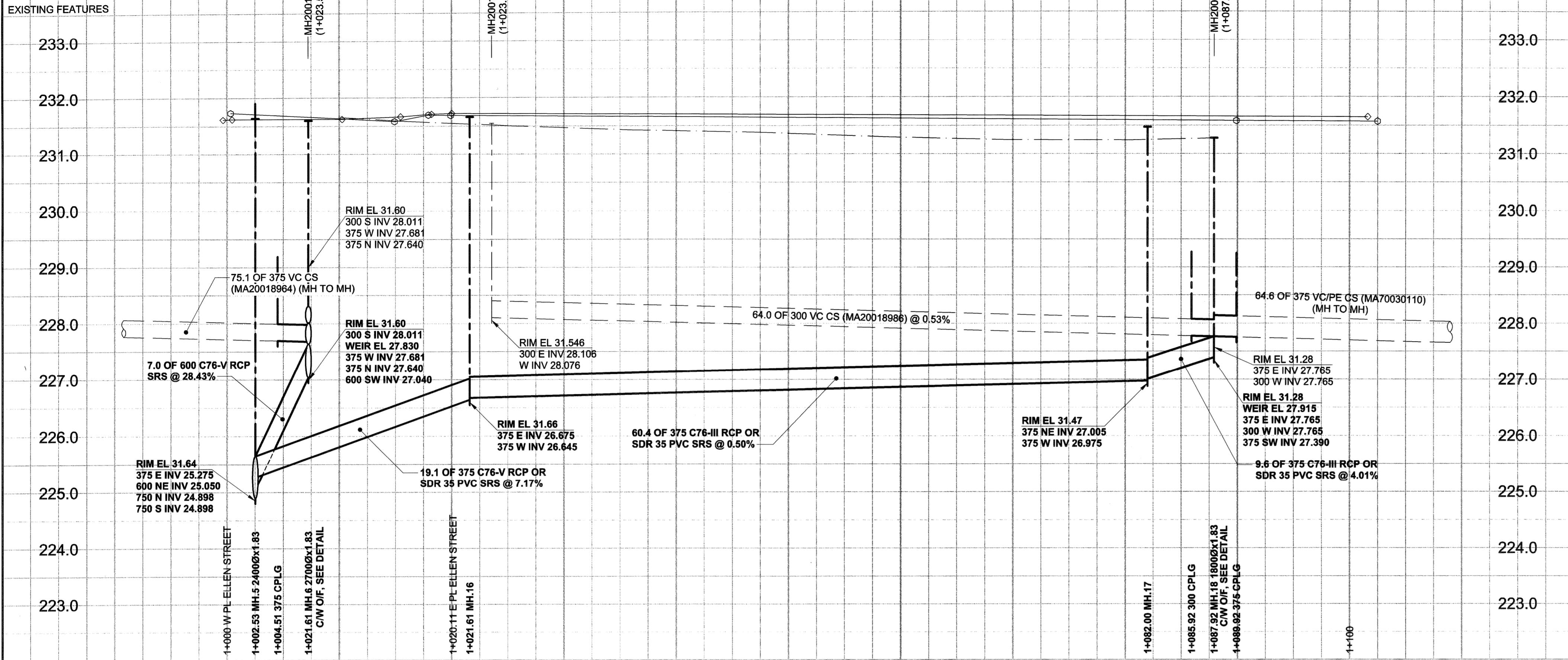


D SIZE 22" x 34" (559mm x 864mm)

PLOT: 06/11/29 3:51:52 PM

UMA FILE NAME: D265-177-04_01-C-1009_PX.dwg Saved By: labard



WARNING

IF POWER EQUIPMENT OR EXPLOSIVES ARE TO BE USED FOR EXCAVATION ON THIS PROJECT, THE CONTRACTOR MUST:

- 1) NOTIFY THE GAS COMPANY OF THE PROPOSED LOCATION OF EXCAVATION.
- 2) TAKE PRECAUTION TO AVOID DAMAGE TO GAS COMPANY INSTALLATIONS.

SEE PROVINCIAL REGULATION 140/92 FOR DETAILS

150 mm WM	WATERMAIN	150 mm WM	CURB STOP	150 mm WM	WATERMAIN	150 mm WM	LOCATION APPROVED UNDERGROUND STRUCTURES
+	HYDRANT	+	REDUCER	+	HYDRANT	+	SUPR. U/G STRUCTURES DATE COMMITTEE
+	VALVE	+	COUPLING	+	VALVE	+	NOTE: LOCATION OF UNDERGROUND STRUCTURES AS SHOWN ARE BASED ON THE BEST INFORMATION AVAILABLE. BUT NO GUARANTEE IS GIVEN THAT ALL EXISTING UTILITIES ARE SHOWN OR THAT THE GIVEN LOCATIONS ARE EXACT. CONFIRMATION OF EXISTENCE AND EXACT LOCATION OF ALL SERVICES MUST BE OBTAINED FROM THE INDIVIDUAL UTILITIES BEFORE PROCEEDING WITH CONSTRUCTION.
+	LAND DRAINAGE SEWER	+	ANODE	+	LAND DRAINAGE SEWER	+	
+	WASTE WATER SEWER	+	MTS	+	WASTE WATER SEWER	+	
+	MANHOLE	+	GAS	+	PAVEMENT CROWN	+	
+	CATCH BASIN	+	TESTHOLE	+	N/W PROPERTY LINE	+	
+	CURB INLET	+	LAMP STANDARD	+	S/E PROPERTY LINE	+	
+	CULVERT	+	TREE	+	N/W GUTTER	+	
+	PIPE ABANDONMENTS	+		+	S/E GUTTER	+	
+	SURVEY BAR	+		+		+	
+	EXISTING	+	LEGEND - PLAN	+	LEGEND - PROFILE	+	

NO.	ISSUED FOR CONSTRUCTION	DATE	BY
0	ISSUED FOR CONSTRUCTION	06/11/28	KMB
	REVISIONS	YYMMDD	BY

DESIGNED BY	GEB / DME	CHECKED BY
DESIGNED BY		
DRAWN BY	KMB	
HOR. SCALE	1:250	
VERT. SCALE	1:50	
DATE	06/11/29	

METRIC

WHOLE NUMBERS INDICATE MILLIMETRES
DECIMALIZED NUMBERS INDICATE METRES

UMA | AECOM

© 2005 UMA ENGINEERING LTD. ALL RIGHTS RESERVED.

DESIGNED BY: GEB / DME
CHECKED BY: [Signature]
APPROVED BY: [Signature]
RELEASED FOR CONSTRUCTION: [Signature]
DATE: 06/11/29

PROFESSIONAL'S SEAL

Certificate of Authorization
UMA Engineering Ltd.
No. 256 Expiry: April 30, 2007

THE CITY OF WINNIPEG
WATER AND WASTE DEPARTMENT

ALEXANDER/BANNATYNE
COMBINED SEWER RELIEF
CONTRACT 4

ROSS AVENUE
ELLEN STREET TO
165m W OF PAULIN STREET

SHEET 9 OF 15
CITY DRAWING NUMBER
LD-3441

BID OPPORTUNITY NO. 690-2006

- CONSTRUCTION NOTES:**
1. FOR DETAILED TEST HOLE INFORMATION, SEE SPECIFICATION.
 2. THE LOCATION OF ALL SERVICES IS TO BE CONFIRMED IN THE FIELD.
 3. INSTALL NEW SEWERS AND CATCHBASIN LEADS BY TRENCHLESS METHODS WHEREVER POSSIBLE.
 4. RENEW/REHABILITATE CATCHBASINS & RENEW CATCHBASIN LEADS WHERE NOTED.