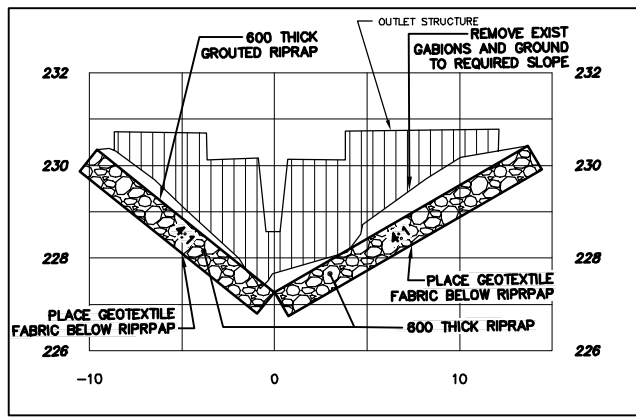
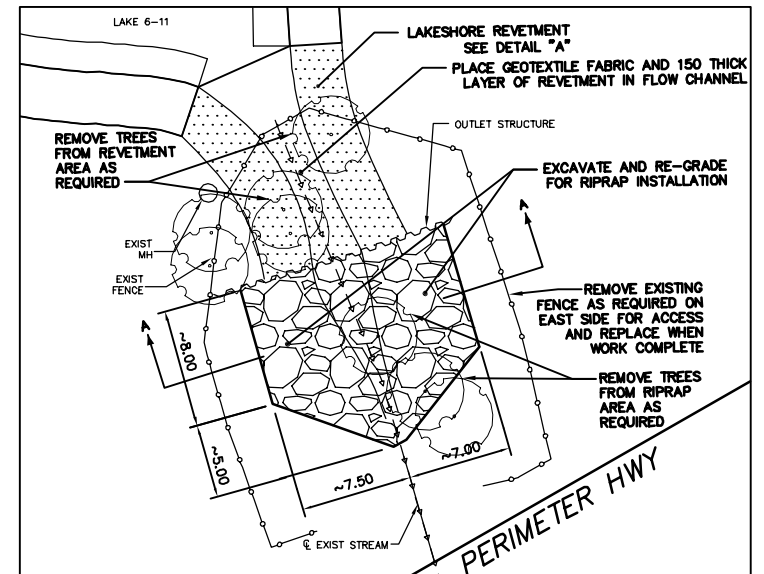
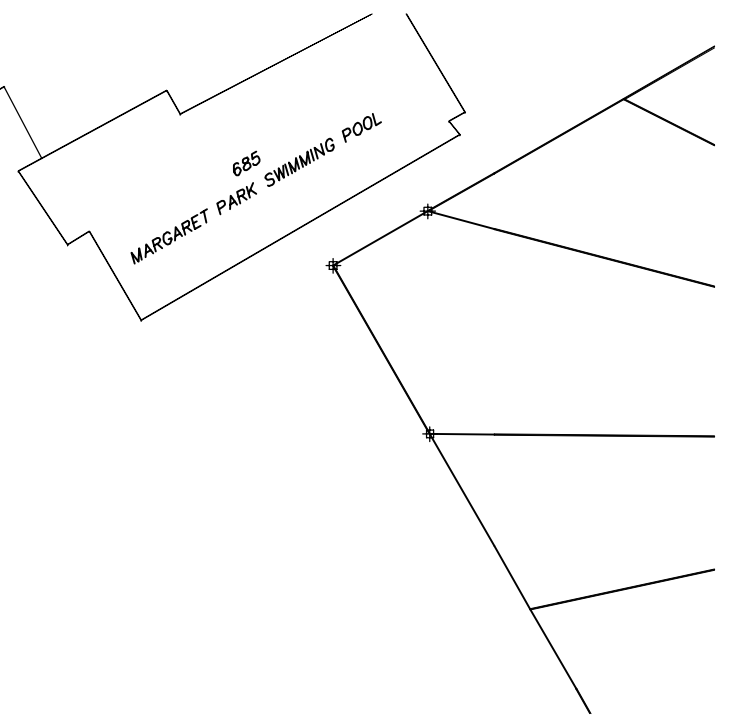
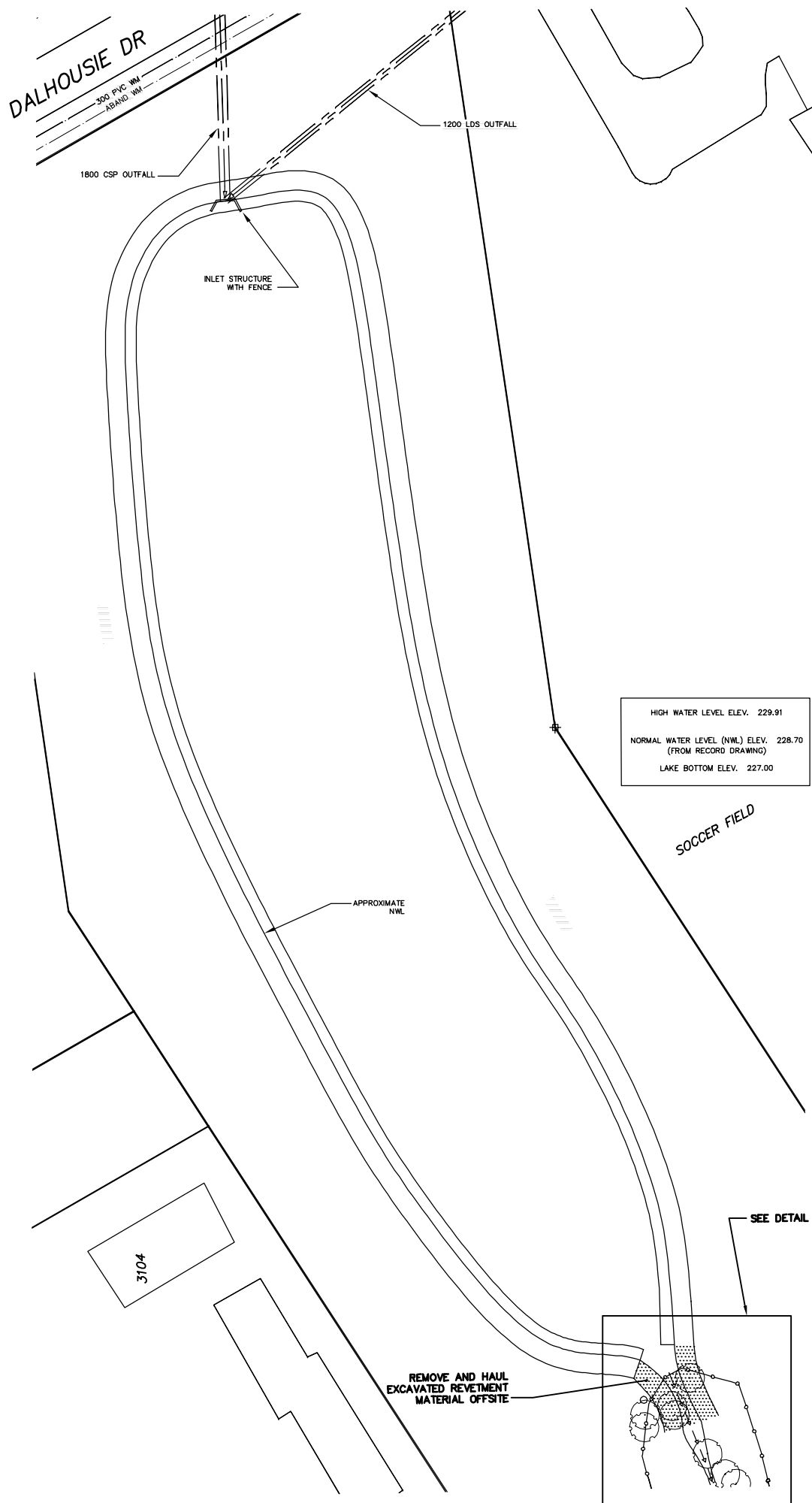


DALHOUSIE DR



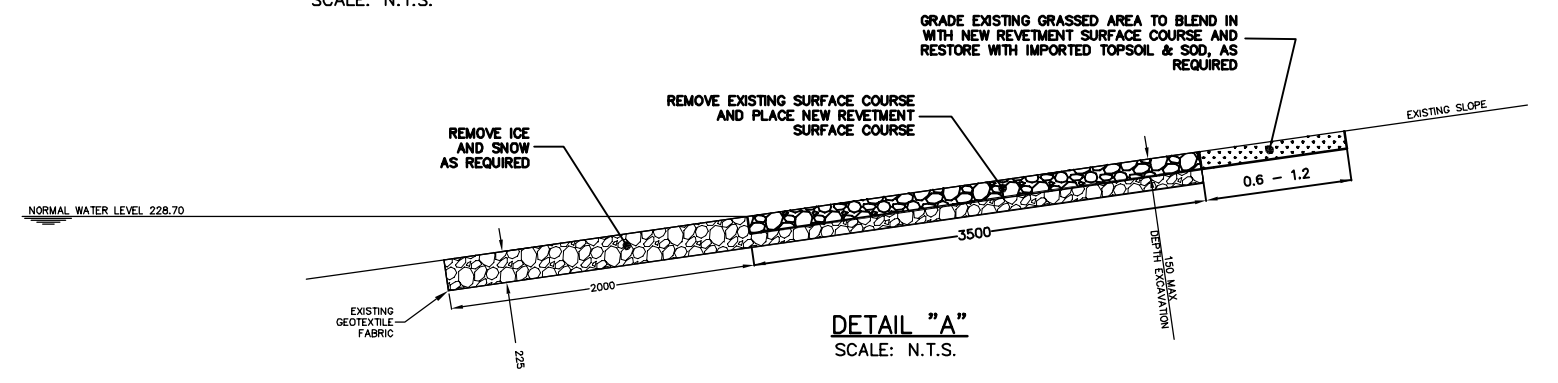
- NOTES:**
1. CONTRACTOR TO LAYOUT AND MARK EXISTING OUTFALL PIPES.
 2. CONSTRUCTION ACCESS FROM DALHOUSIE DRIVE ONLY.
 3. RESTORATION OF GRASSED AREAS TO BE WITH SOD USING IMPORTED TOPSOIL IN ACCORDANCE WITH CW 3510
 4. RESTRICT CONSTRUCTION ACTIVITIES TO CITY PROPERTIES.



DETAIL "B"
SCALE: N.T.S.

LEGEND

REMOVE AND HAUL EXCAVATED REVETMENT MATERIAL OFF-SITE



DETAIL "A"
SCALE: N.T.S.

HIGH WATER LEVEL ELEV. 229.91
NORMAL WATER LEVEL (NWL) ELEV. 228.70
(FROM RECORD DRAWING)
LAKE BOTTOM ELEV. 227.00

SOCCER FIELD

SEE DETAIL "B"

REMOVE AND HAUL EXCAVATED REVETMENT MATERIAL OFFSITE

PERIMETER HWY

METRIC
WHOLE NUMBERS INDICATE MILLIMETRES
DECIMALIZED NUMBERS INDICATE METRES

B.M. ELEV.	FIELD BOOK #	CITY OF WINNIPEG WATER AND WASTE ENGINEERING DIVISION		ENGINEER'S SEAL	 THE CITY OF WINNIPEG WATER AND WASTE DEPARTMENT	SHEET 2 OF 4 CITY DRAWING NUMBER LD-3422
POSTED TO LBIS		DESIGNED BY DEB	CHECKED BY TW	ORIGINAL SIGNED BY KAS ZUREK 06/10/19		
		DRAWN BY PB/CJH/WKT	APPROVED BY KZ		2006 STORMWATER RETENTION BASIN REVETMENT REPLACEMENT LAKE 6-11	
		HOR. SCALE 1:500	RELEASED FOR CONSTRUCTION			
		VERTICAL				
NO. REVISIONS	DATE BY	DATE	2006 10 19	DATE		
					BID OPPORTUNITY: 664-2006 FILENAME: LAKE_6-10.dwg PLOT DATE: 2006 10 19	