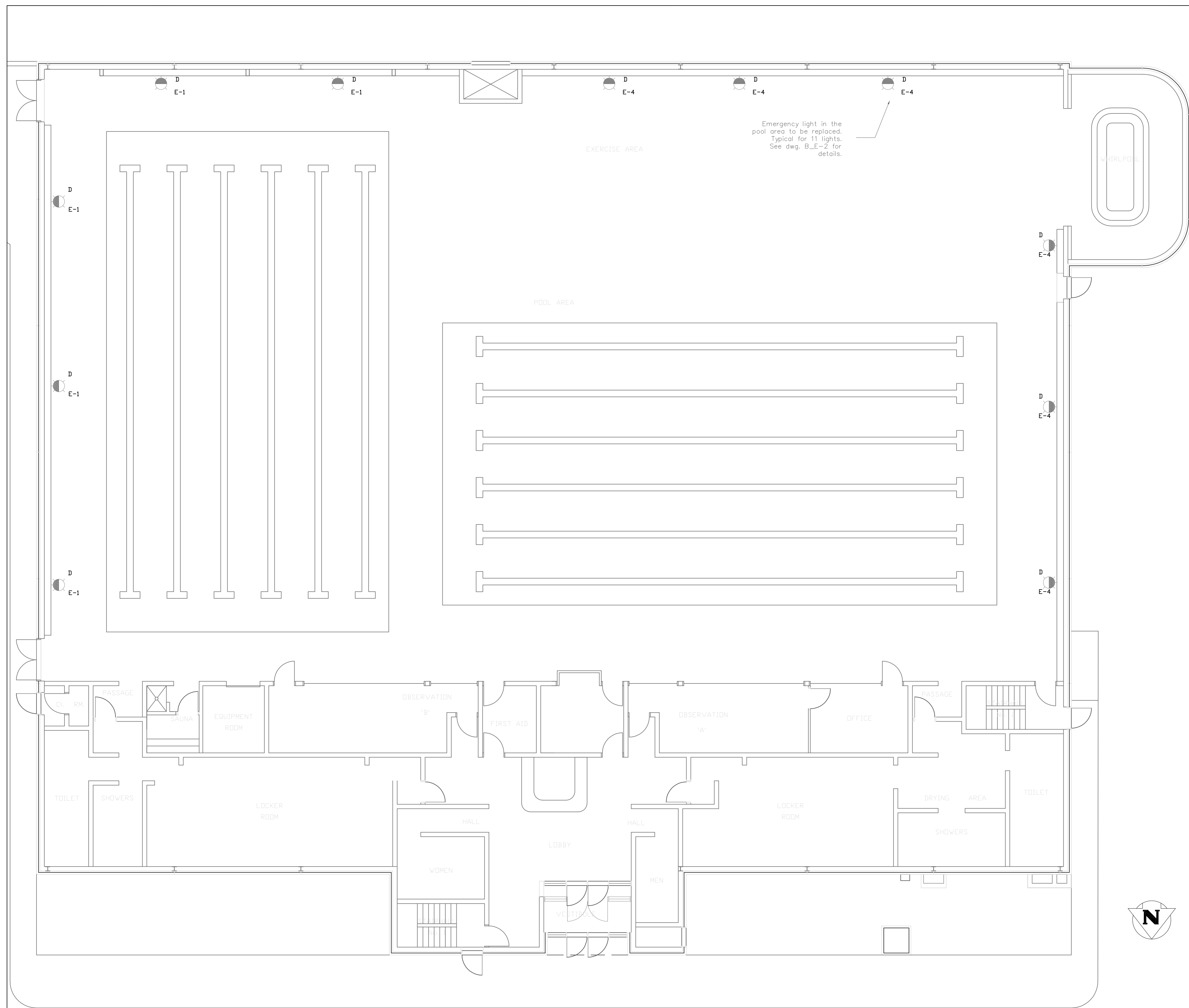


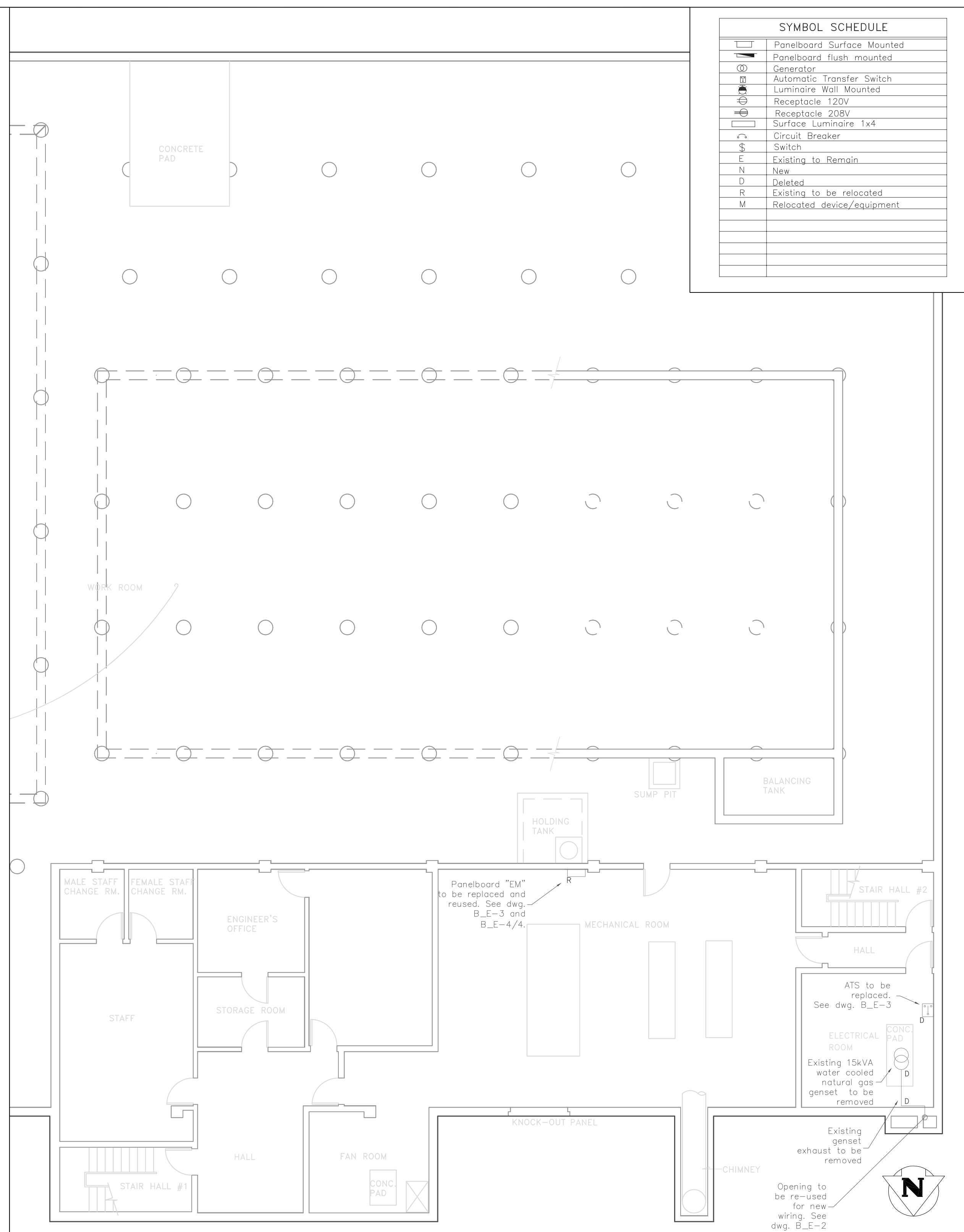
SYMBOL SCHEDULE	
	Panelboard Surface Mounted
	Panelboard flush mounted
	Generator
	Automatic Transfer Switch
	Luminaire Wall Mounted
	Receptacle 120V
	Receptacle 208V
	Surface Luminaire 1x4
	Circuit Breaker
	Switch
	Existing Luminaire
	New
	Deleted
	Existing to be relocated
	Relocated device/equipment



- DESCRIPTION OF WORK
- The Contractor will be responsible for coordinating the delivery of materials to Site, unloading the materials at Site, and arranging the storage and insurance of such materials upon arrival.
 - Supply and install new weatherproof enclosed generator set to replace old one. Generator/enclosure to be installed externally as indicated on dwg. B_E-2.
 - Supply and install fence to protect generator set.
 - Supply and install emergency panel to replace existing two. One existing panel to be deleted, the other to be re-used.
 - Provide UPS and connect to emergency panelboard "EM" to feed pool lights.
 - Supply and install new genset ccts from normal power and rewire non-emergency circuits to normal power.

- Notes:
- Coordinate shutdown with pool staff prior to disconnecting panel/lighting.
 - Patch and paint walls/floor to match existing where equipment has been removed/replaced.
 - Patch and seal both sides of walls/floor where existing wiring/conduit/piping have been removed.
 - Contractor to check with Contract Administrator prior to disposal of removed equipment.
 - Wiring to be reused where possible.

1 Demolition Plan Main Floor
E-1 SCALE: 1:100



- Notes:
- Coordinate shutdown with pool staff prior to disconnecting panel/lighting.
 - All existing wiring and conduit associated with equipment being deleted to be removed back to source.
 - Natural gas and water lines to be removed to source.
 - Patch and paint walls/floor to match existing where equipment has been removed/replaced.
 - Patch and seal both sides of walls/floor where existing wiring/conduit/piping have been removed.

2 Demolition Plan Basement
E-1 SCALE: 1:100

Rev.	By:	DATE:

THE CITY OF WINNIPEG
PUBLIC WORKS DEPARTMENT
BUILDING SERVICES DIVISION
100 MAIN STREET, MAIN FLOOR
Winnipeg WPC, MB, R3C 1A4 (204) 986-7266

PROJECT: Emergency System Upgrade
Bonivital Pool, 1215 Archibald St.

SHEET TITLE: Demolition

ENG. STAMP: G.W. ALCOCK
PROVINCE OF MANITOBA REGISTERED PROFESSIONAL ENGINEER

PROJECT NO: 663-2006
DRAWN BY: VC CHECKED BY: GWA APPROVED BY: GWA
SCALE: 1:100 DATE: 24 October, 2006
DWG. NO: B_E-1 REV: 0