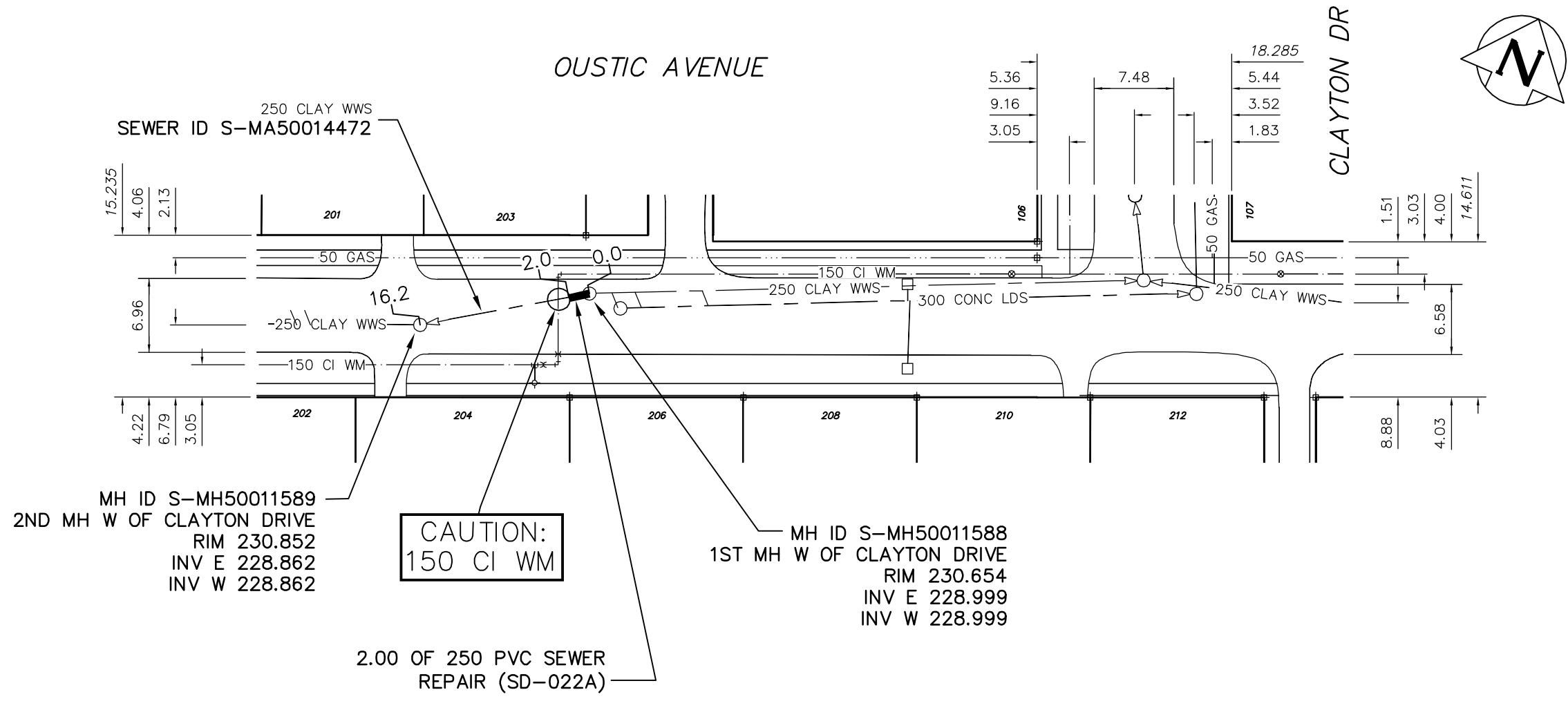


NOTES:  
 1. CONTRACTOR TO VERIFY LIMITS OF SEWER REPAIRS PRIOR TO EXCAVATION BY MEANS OF VIDEO INSPECTION.  
 2. CONTRACTOR TO PROVIDE VIDEO INSPECTION OF SEWER SERVICES WITHIN LIMITS OF REPAIR IN PRESENCE OF CONTRACT ADMINISTRATOR TO DETERMINE IF SERVICE RENEWAL IS REQUIRED.



SEWER JUNCTION INFORMATION	
DISTANCE FROM MH AT KILLARNEY STREET (ID S-MH50011471)	
NO SERVICES WITHIN REPAIR	

INFORMATION FROM SEWER VIDEO INSPECTION

SEWER SERVICE INFORMATION		
ADDRESS	SIZE	P DIST JUNCTION TIE
-	-	NO SERVICES WITHIN REPAIR
-	-	-

ENGINEER'S SEAL

ORIGINAL SIGNED BY  
 K.R. ZUREK  
 10/20/06

BID OPPORTUNITY No: 638-2006  
 FILENAME : 05978.dwg  
 PLOT DATE : 2006 10 23

LEGEND:  
 52.0 | MEASUREMENT TO REPAIR FROM REFERENCE MH SHOWN THUS...

**METRIC**  
 WHOLE NUMBERS INDICATE MILLIMETRES  
 DECIMALIZED NUMBERS INDICATE METRES

B.M. ELEV.	FIELD BOOK #:	<b>CITY OF WINNIPEG WATER AND WASTE ENGINEERING DIVISION</b>		<b>THE CITY OF WINNIPEG WATER AND WASTE DEPARTMENT</b>	
POSTED TO LBIS		DESIGNED BY: NC	CHECKED BY: TW	2006 COMBINED SEWER RENEWALS AND SEWER REPAIRS	
		DRAWN BY: CJH	APPROVED BY: KZ	OUSTIC AVENUE	
		HOR. SCALE: 1:500	RELEASED FOR CONSTRUCTION	2ND MH E OF ST ANNE'S ROAD TO 1ST MH E OF ST ANNE'S ROAD	
		VERTICAL		SHEET 12 OF 17	
NO.	REVISIONS	DATE	BY	CITY DRAWING NUMBER	
		DATE	2006 10 20	05978	