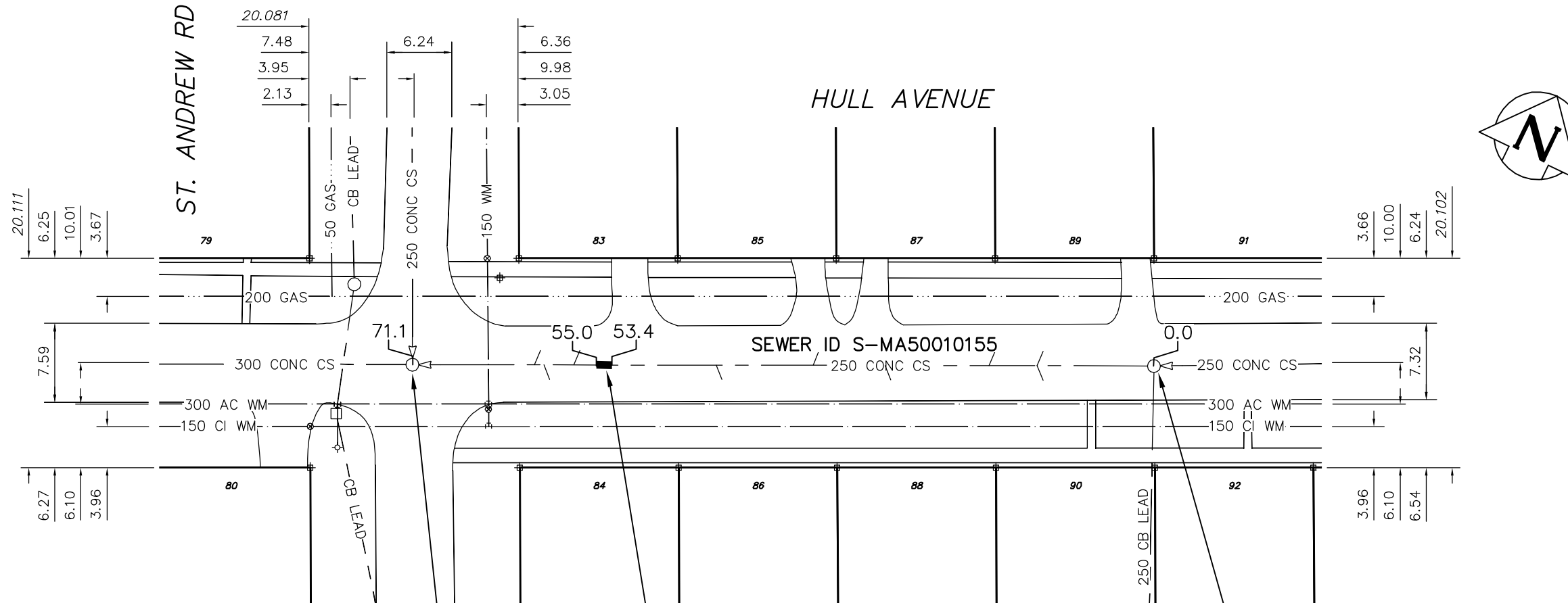


NOTES:
 1. CONTRACTOR TO VERIFY LIMITS OF SEWER REPAIRS PRIOR TO EXCAVATION BY MEANS OF VIDEO INSPECTION.
 2. CONTRACTOR TO PROVIDE VIDEO INSPECTION OF SEWER SERVICES WITHIN LIMITS OF REPAIR IN PRESENCE OF CONTRACT ADMINISTRATOR TO DETERMINE IF SERVICE RENEWAL IS REQUIRED.



MH ID S-MH50008308
 MH AT ST. ANDREW RD
 RIM 231.023
 INV N 228.663
 INV E 228.663
 INV W 228.663

-1.50 OF 250 DR 35 PVC SEWER REPAIR (SD-022A) WITH 1 SERVICE RECONNECTION.
 -1.50 OF 20 COPPER WATER SERVICE THROUGH PIPE TO BE REPAIRED AND REROUTED OVER NEW PIPE.

MH ID S-MH50008307
 1ST MH E OF ST. ANDREW RD
 RIM 230.830
 INV E 228.680
 INV W 228.680

ENGINEER'S SEAL

 ORIGINAL SIGNED BY
 K.R. ZUREK
 10/20/06

BID OPPORTUNITY No: 638-2006
 FILENAME : 05974.dwg
 PLOT DATE : 2006 10 23

SEWER JUNCTION INFORMATION FROM SEWER VIDEO INSPECTION S-MA50010155				
DISTANCE FROM MH ID S-MH50008308				
11.70	E	150ø	NORTH	-
12.60	E	150ø	SOUTH	84 ST ANDREWS
15.50	E	150ø	NORTH	83 ST ANDREWS

SEWER SERVICE INFORMATION		
ADDRESS	SIZE	R DIST JUNCTION TIE
83 HULL AVE RESIDENTIAL	150	- 15.5 E OF MH AT ST ANDREWS RD
84 HULL AVE RESIDENTIAL	150	- 12.6 E OF MH AT ST ANDREWS RD

LEGEND:
 52.0 | MEASUREMENT TO REPAIR FROM REFERENCE MH SHOWN THUS... 0.0

METRIC
 WHOLE NUMBERS INDICATE MILLIMETRES
 DECIMALIZED NUMBERS INDICATE METRES

B.M. ELEV.	FIELD BOOK #:	CITY OF WINNIPEG WATER AND WASTE ENGINEERING DIVISION		THE CITY OF WINNIPEG WATER AND WASTE DEPARTMENT	
POSTED TO LIS		DESIGNED BY: NC	CHECKED BY: TW	2006 COMBINED SEWER RENEWALS AND SEWER REPAIRS	
		DRAWN BY: CJH	APPROVED BY: KZ	HULL AVENUE	
		HOR. SCALE: 1:500	RELEASED FOR CONSTRUCTION	MH AT ST. ANDREW ROAD TO 1ST MH E OF ST. ANDREW ROAD	
		VERTICAL		SHEET 8 OF 17	
NO.	REVISIONS	DATE	BY	DATE	2006 10 20
				CITY DRAWING NUMBER: 05974	