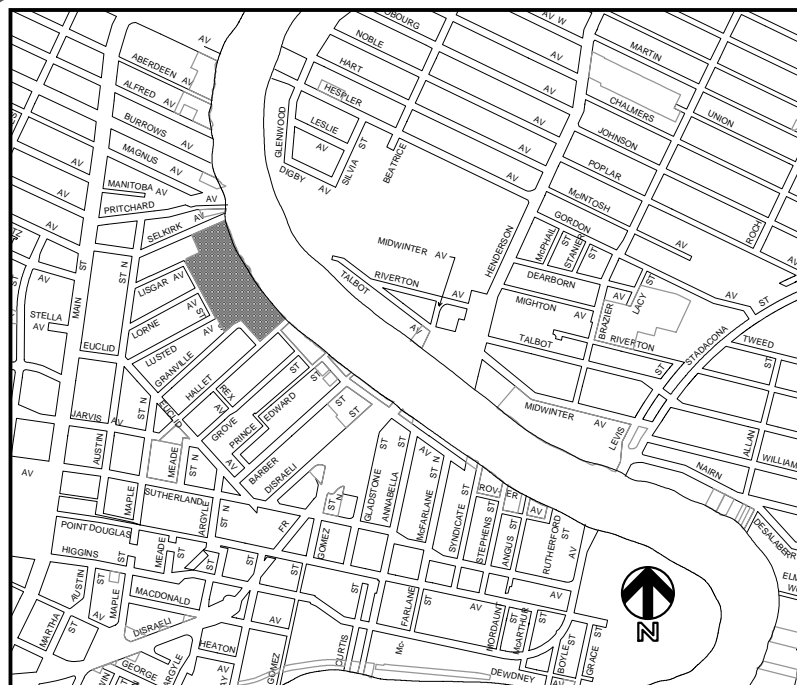
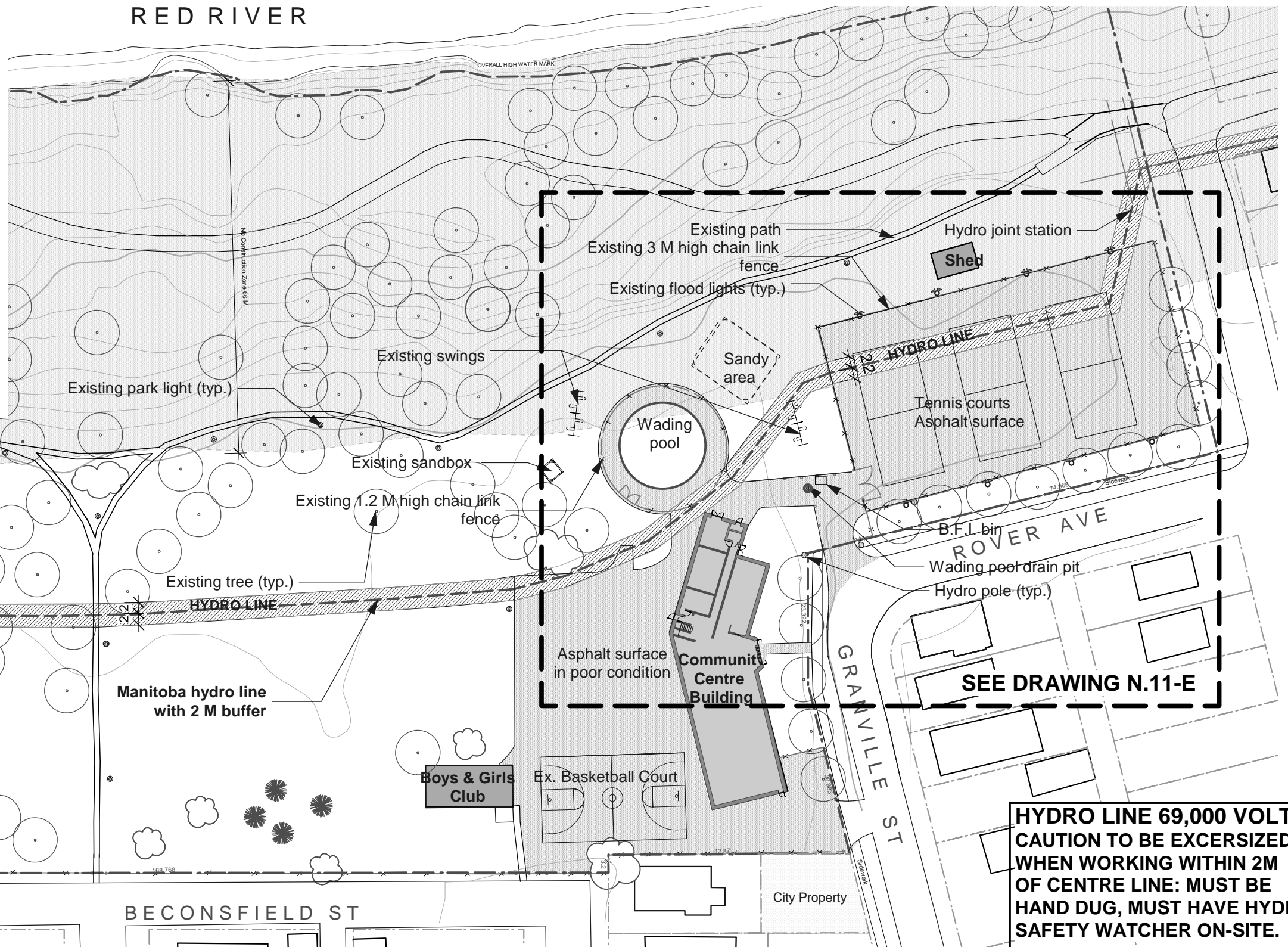


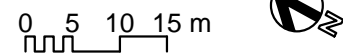
RED RIVER



Location Plan N.T.S.



HYDRO LINE 69,000 VOLT - CAUTION TO BE EXERCISED WHEN WORKING WITHIN 2M OF CENTRE LINE: MUST BE HAND DUG, MUST HAVE HYDRO SAFETY WATCHER ON-SITE.



CONTRACTOR TO CONFIRM ALL DIMENSIONS AND REPORT ANY DISCREPANCIES TO CONTRACT ADMINISTRATOR PRIOR TO CONSTRUCTION. LOCATION OF UNDERGROUND STRUCTURES AS SHOWN ARE BASED ON THE BEST INFORMATION AVAILABLE BUT NO GUARANTEE IS GIVEN THAT ALL EXISTING UTILITIES ARE SHOWN OR THAT THE GIVEN LOCATIONS ARE EXACT. CONFIRMATION OF EXISTENCE AND EXACT LOCATION OF ALL SERVICES MUST BE OBTAINED FROM THE INDIVIDUAL UTILITIES BEFORE PROCEEDING WITH CONSTRUCTION.

<p>THE CITY OF WINNIPEG Planning, Property and Development Department Planning and Land Use Division Unit 15 - 30 Fort Street, Winnipeg, MB, (R3C 4X5)</p>	DESIGNED BY	BB/DB	CHECKED BY		DRAWING TITLE NORQUAY COMMUNITY CENTRE	DRAWING NO. N.11-C	
	DRAWN BY	BB	APPROVED BY	MANAGER, PARK AND OPEN SPACES			DATE
	HORIZ. SCALE	1:800				Existing Site Conditions	BID OPPORTUNITY NO. 631-2006
	DATE	August 03, 2006		MANAGER, PLANNING AND LAND USE DIVISION	DATE		