

- NOTES:**
1. STATIONING IN CENTER OF ST. MARY'S RD. R.O.W. UNLESS NOTED OTHERWISE.
  2. S.E. PROPERTY LINE OF ST. MARY'S RD. AND GREENWOOD AVE. = STA. 0+100.0.
  3. SEE DWG. P3257-11 FOR TYPICAL CROSS SECTIONS AND DETAILS.
  4. FINAL CURB HEIGHT TO BE 150mm OR LOWER IN AREAS WHERE DRAINAGE MUST BE MAINTAINED.
  5. ALL DIMENSIONS ARE TO BACK OF CURB.
  6. ISOLATE MISCELLANEOUS ITEMS IN NEW CONCRETE WORKS AS PER SD-228C.
  7. PLANE EXISTING ASPHALT OVERLAY WITHIN CONTRACT LIMITS TO DEPTHS INDICATED BY THE CONTRACT ADMINISTRATOR. NOT ALL AREAS WILL REQUIRE PLANING.
  8. LEGAL PLAN AND UNDERGROUND INFORMATION FROM CITY OF WINNIPEG LBIS.
  9. MOISTURE BARRIER/STRESS ABSORPTION GEOTEXTILE FABRIC INSTALLED ON BOTH SOUTHBOUND LANES BETWEEN STA. 0+510 AND 0+615.

**METRIC**  
WHOLE NUMBERS INDICATE MILLIMETRES  
DECIMALIZED NUMBERS INDICATE METRES

150 mm W.M.	WATERMAIN	150 mm W.M.	HYDRO	150 mm W.M.	WATERMAIN	150 mm W.M.	WATERMAIN
300 mm L.O.S.	LAND DRAINAGE SEWER	300 mm L.O.S.	CONCRETE	300 mm L.O.S.	LAND DRAINAGE SEWER	300 mm L.O.S.	LAND DRAINAGE SEWER
250 mm W.W.S.	WASTE WATER SEWER	250 mm W.W.S.	ASPHALT	250 mm W.W.S.	WASTE WATER SEWER	250 mm W.W.S.	WASTE WATER SEWER
○	MANHOLE	●	PLANNING	○	MANHOLE	○	MANHOLE
□	CATCH BASIN	■	PAVING STONES	□	CATCH BASIN	□	CATCH BASIN
▽	CURB INLET	▽	PARTIAL DEPTH REPAIR	▽	CURB INLET	▽	CURB INLET
+	JUNCTIONS	+	PROPERTY LINE	+	JUNCTIONS	+	JUNCTIONS
—	CULVERT	—	SURVEY BAR	—	CULVERT	—	CULVERT
—	GAS	—	PARAPLEGIC RAMP	—	GAS	—	GAS
—	EXISTING LEGEND-PLAN	—	PROPOSED	—	EXISTING LEGEND-PROFILE	—	PROPOSED

**UNDERGROUND STRUCTURES**

SUPPLY U/G STRUCTURES COMMITTEE DATE

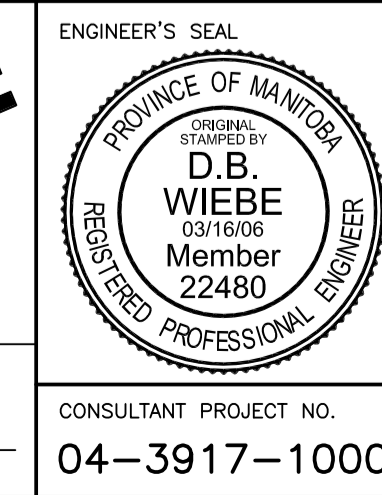
**NOTE:**  
LOCATION OF UNDERGROUND STRUCTURES AS SHOWN ARE BASED ON THE BEST INFORMATION AVAILABLE. BUT NO GUARANTEE IS GIVEN THAT ALL EXISTING UTILITIES ARE SHOWN OR THAT THE GIVEN LOCATIONS ARE EXACT. CONFIRMATION OF EXISTENCE AND EXACT LOCATION OF ALL SERVICES MUST BE OBTAINED FROM THE INDIVIDUAL UTILITIES BEFORE PROCEEDING WITH CONSTRUCTION.

BENCH MARK  
848755 - S.E. cor. of St. Mary's Rd. & Dakota St., tbl. on top of 0.5m dia. x 2.4m iron pipe, 1.1m E. of E.L. of St. Mary's Rd. & 1.8m N. of S.L. of Dakota St.

B.M.	62-037	DESIGNED BY	D.B. WIEBE
ELEV.	231.811m	DRAWN BY	A.J. PORCO
		CHECKED BY	D.P. KRAHN
		APPROVED BY	
2	ISSUED FOR TENDER	03/14/06	DBW
1	ISSUED FOR REVIEW	03/01/05	DBW
NO.	REVISIONS	DATE	BY
		11/15/04	

RELEASSED FOR CONSTRUCTION

DATE



**THE CITY OF WINNIPEG**  
PUBLIC WORKS DEPARTMENT

**Winnipeg**

**ST. MARY'S ROAD**  
STREET RENEWAL

DUNKIRK DR. TO GREENDELL AVE.  
STA. 0+300 TO STA. 0+450

CITY DRAWING NUMBER  
**P-3257-03**

SHEET **03** OF **16**

CONSULTANT PROJECT NO.  
**04-3917-1000**