

EXISTING WATER SERVICE LOCATION RECORDS				
ADDRESS	SIZE/TYPE	SHORT/LONG	CORP. LOCATION	COMMENTS
1621 ST. MARY'S ROAD	NO INFO AVAILABLE	3.4m E E/L BLDG 31.7m OUT FR COR OF BLDG	NO INFO AVAILABLE	SERVICED OFF VISTA
1622 ST. MARY'S ROAD	50 COPPER	3.0m L/R 4.6m FROM CURB	73.2m E. OF HYD	SERVICED OFF RIVER
1622 B ST. MARY'S ROAD	19 COPPER	3.0m L/R 4.6m FROM CURB	NO INFO AVAILABLE	SERVICED OFF RIVER

* SERVICE TO BE RENEWED, ALL OTHERS TO BE RECONNECTED

CONSTRUCTION NOTES:

1. EXPOSE EXISTING WATERMAIN & CONFIRM INVERTS PRIOR TO CONSTRUCTION.
2. CONFIRM LOCATION OF ALL SERVICES IN THE FIELD.
3. INSTALL WATERMAIN BY TRENCHLESS METHODS.
4. TRENCHES & EXCAVATIONS WITHIN 1 METRE OF A PAVED AREA INCLUDING SIDEWALKS SHALL BE CLASS 3 BACKFILL.
5. ALL MATERIALS SHALL CONFORM TO THE CITY OF WINNIPEG STANDARD CONSTRUCTION SPECIFICATIONS.
6. MINIMUM COVER TO TOP OF WATERMAIN SHALL BE 2.4 m.
7. REPLACE ALL EXISTING LEAD SERVICES FROM PROPOSED WATERMAIN TO PL.
8. NOTIFY ALL AFFECTED RESIDENTS AND BUSINESSES AT LEAST 24 HOURS IN ADVANCE OF ANY WATER SHUTDOWNS OR DISRUPTION OF SERVICE.

METRIC

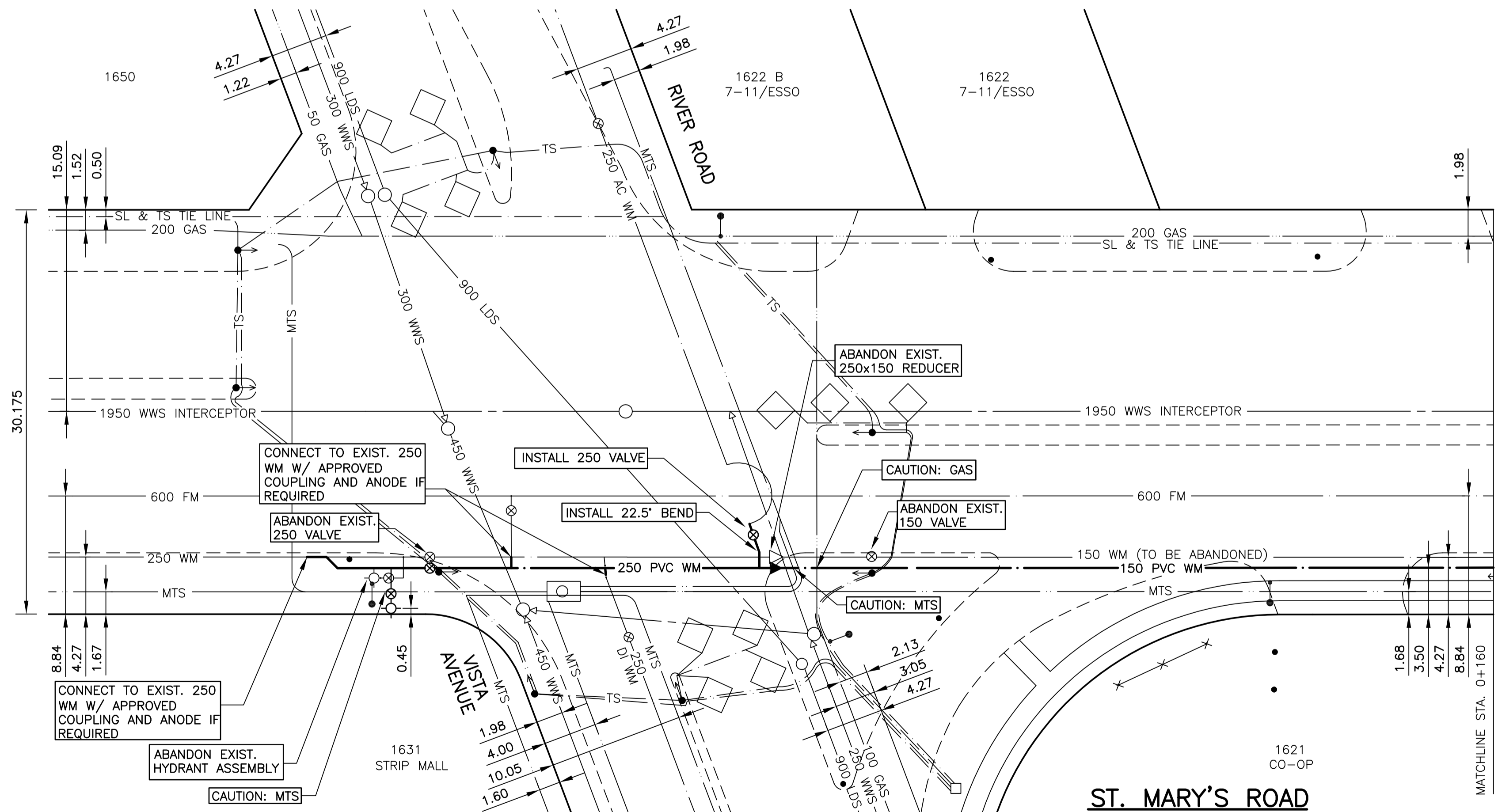
WHOLE NUMBERS INDICATE MILLIMETRES
DECIMALIZED NUMBERS INDICATE METRES

WARNING

IF POWER EQUIPMENT OR EXPLOSIVES ARE TO BE USED FOR EXCAVATION ON THIS PROJECT THE CONTRACTOR MUST:

1. NOTIFY THE GAS COMPANY OF THE PROPOSED LOCATION OF EXCAVATION.
2. TAKE PRECAUTION TO AVOID DAMAGE TO GAS COMPANY INSTALLATIONS
SEE PROVINCIAL REGULATION 210/72 FOR DETAILS

NOTE: CHAINAGE ALONG E. PL. OF ST. MARY'S RD.



150 mm W.M.	150 mm W.M.	150 mm W.M.	150 mm W.M.	150 mm W.M.	150 mm W.M.	150 mm W.M.	150 mm W.M.
WATERMAIN	WATERMAIN	HYDRANT	HYDRANT	LAND DRAINAGE SEWER	LAND DRAINAGE SEWER	WASTE WATER SEWER	WASTE WATER SEWER
HYDRANT VALVE	HYDRANT VALVE	CONCRETE ASPHALT	CONCRETE ASPHALT	PROPERTY LINE	PROPERTY LINE	SURVEY BAR	SURVEY BAR
MANHOLE	MANHOLE	CATCH BASIN	CATCH BASIN	CURB INLET	CURB INLET	JUNCTIONS	JUNCTIONS
CULVERT	CULVERT	GAS	GAS	EXISTING	EXISTING	LEGEND-PLAN	LEGEND-PLAN
PROPOSED	PROPOSED	EXISTING	EXISTING	LEGEND-PROFILE	LEGEND-PROFILE	PROPOSED	PROPOSED

UNDERGROUND STRUCTURES	DATE
SUPV. U/G STRUCTURES COMMITTEE	

NO.	REVISIONS	DATE	BY
2	ISSUED FOR TENDER	16/03/06	D.B.W.
1	SUBMITTED TO W&W FOR REVIEW	03/01/06	D.B.W.

DESIGNED BY	DRAWN BY	CHECKED BY	APPROVED BY
J.K. MORRIS	J.K. MORRIS		

DILLON CONSULTING

ENGINEER'S SEAL
PROVINCE OF MANITOBA
D.P. KRAHN
03/18/06
Member 4226
REGISTERED PROFESSIONAL ENGINEER

THE CITY OF WINNIPEG WATER AND WASTE DEPARTMENT

ST. MARY'S ROAD
WATERMAIN RENEWAL

WOODYDELL AVE. TO RIVER RD.
RIVER RD. TO STA. 0+160

CITY DRAWING NUMBER
D-8896

SHEET 15 OF 16

BID OPPORTUNITY
6-2006

CONSULTANT DRAWING NO.
04-3917-1000

RELEASED FOR CONSTRUCTION
(ORIGINAL SIGNED BY) KAZ ZUREK
DATE: MARCH 16, 2006