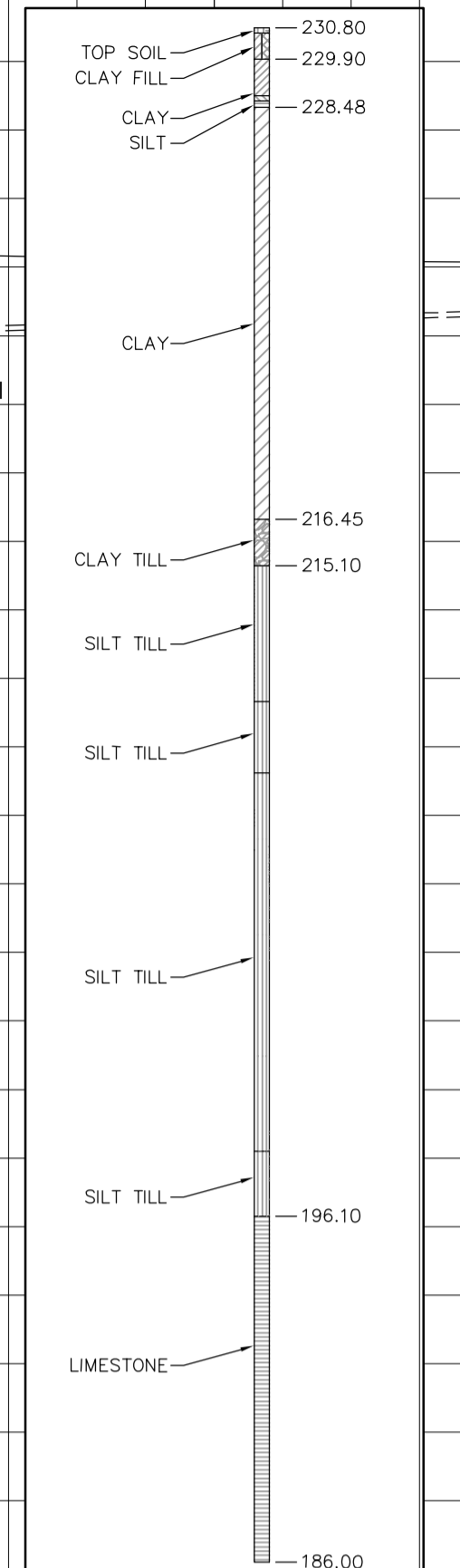
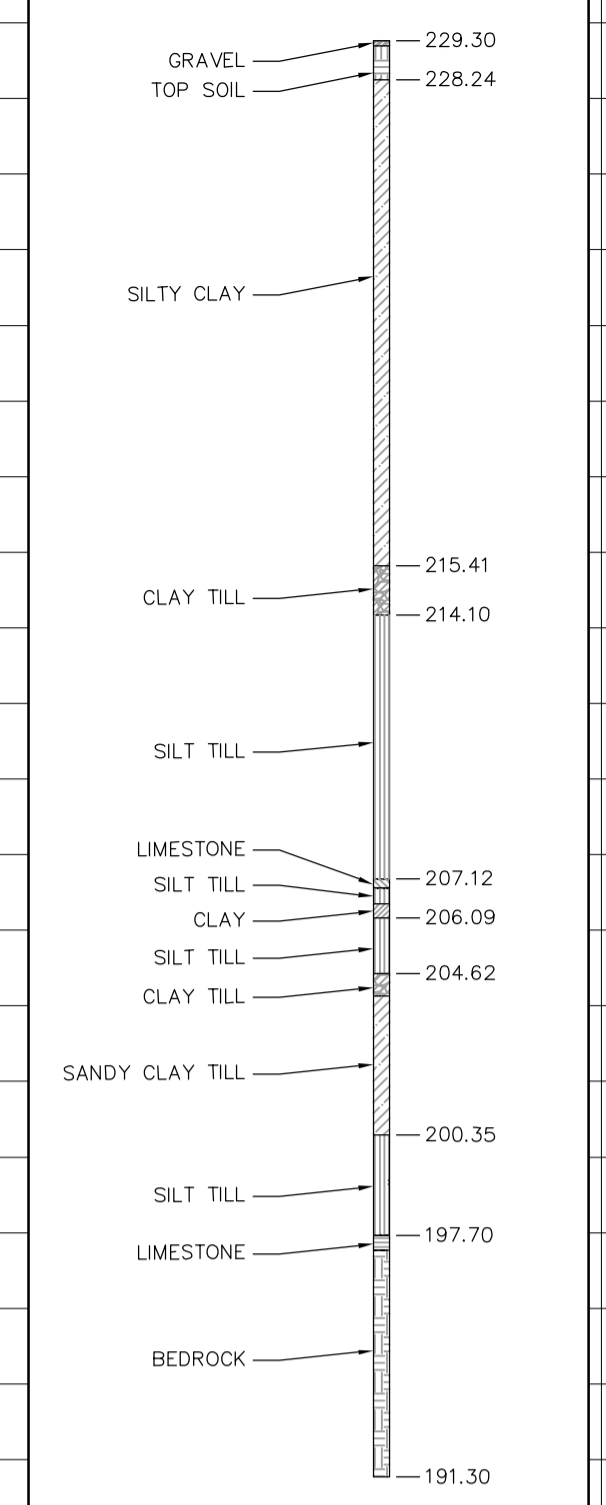


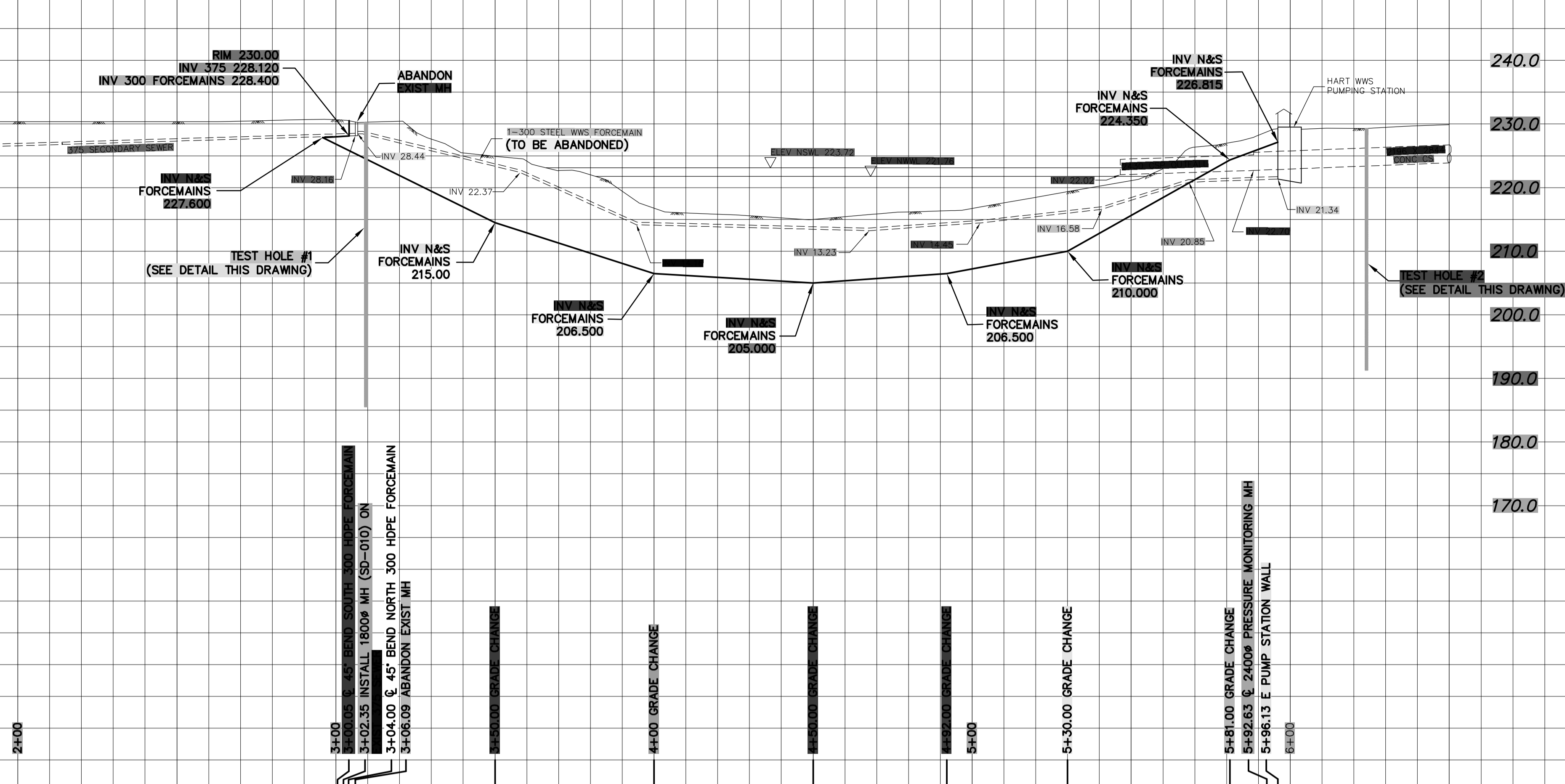
240.0
230.0
220.0
210.0
200.0
190.0
180.0
170.0



TEST HOLE #1 DETAIL
SCALE NTS

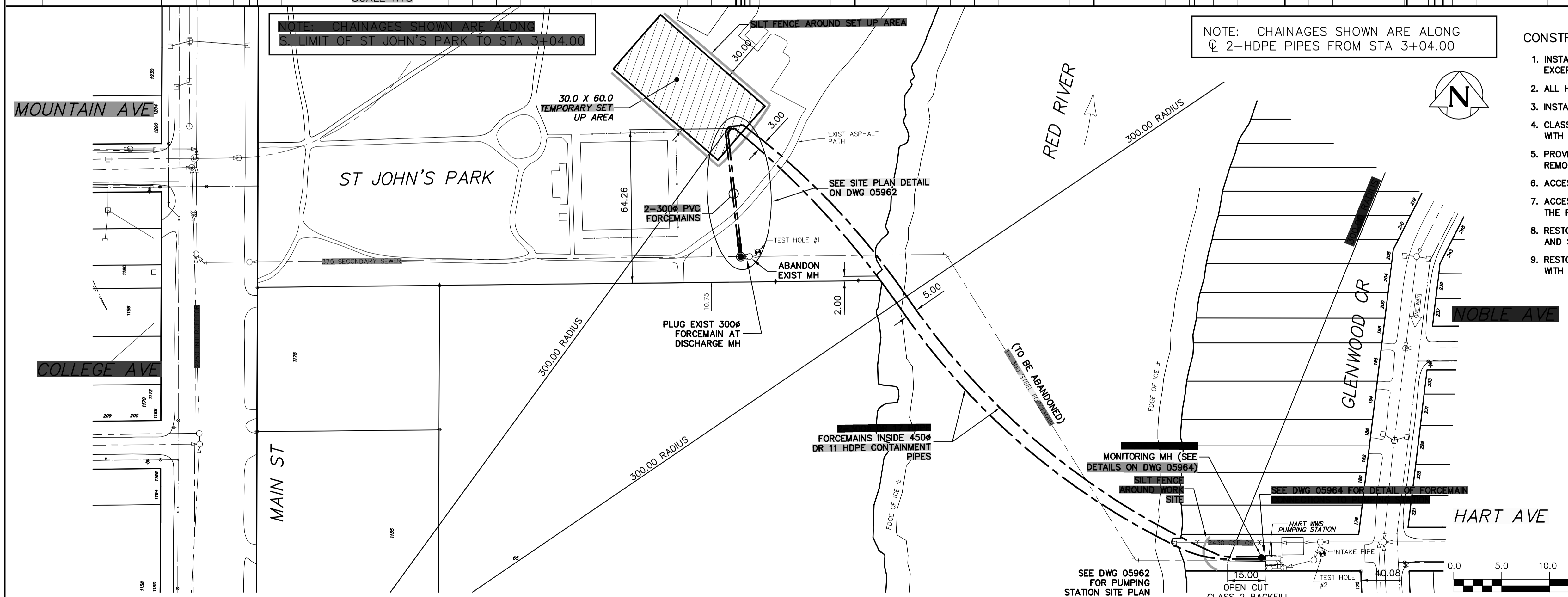


TEST HOLE #2 DETAIL
SCALE NTS



NOTE: CHAINAGES SHOWN ARE ALONG S LIMIT OF ST JOHN'S PARK TO STA 3+04.00

NOTE: CHAINAGES SHOWN ARE ALONG C 2-HDPE PIPES FROM STA 3+04.00



- CONSTRUCTION NOTES:**
1. INSTALL HDPE FORCEMAINS USING HORIZONTAL DIRECTIONAL DRILLING METHODS, EXCEPT AS NOTED.
 2. ALL HDPE PIPING AND FITTINGS TO BE SUPPLIED BY THE CITY.
 3. INSTALL PVC FORCEMAIN USING TRENCHLESS METHODS.
 4. CLASS 2 BACKFILL WITH TYPE 3 GRANULAR BEDDING IN ACCORDANCE WITH CW 2030 IN EXCAVATIONS.
 5. PROVIDE TREE PROTECTION IN ACCORDANCE WITH SPECIFICATIONS. DO NOT REMOVE TREES WITHOUT CONTRACT ADMINISTRATORS APPROVAL.
 6. ACCESS ST. JOHN'S PARK TEMPORARY SETUP AREA FROM ST. JOHN'S AVE.
 7. ACCESS CONSTRUCTION AREA AT HART PUMPING STATION FROM THE RED RIVER.
 8. RESTORE DISTURBED OR DAMAGED GRASSED AREAS WITH IMPORTED TOP SOIL AND SOD IN ACCORDANCE WITH CW 3150.
 9. RESTORE DISTURBED OR DAMAGED ASPHALT PATHWAYS IN ACCORDANCE WITH CW 3410.

METRIC
WHOLE NUMBERS INDICATE MILLIMETRES
DECIMALIZED NUMBERS INDICATE METRES

WARNING
IF POWER EQUIPMENT OR EXPLOSIVES ARE TO BE USED FOR EXCAVATION ON THIS PROJECT THE CONTRACTOR MUST:
1) NOTIFY THE GAS COMPANY OF THE PROPOSED LOCATION OF EXCAVATION.
2) TAKE PRECAUTION TO AVOID DAMAGE TO GAS COMPANY INSTALLATIONS.
SEE PROVINCIAL REGULATION 210/72 FOR DETAILS

200 WM	WATERMAIN	200 WM	SL, HYDRO	150 WM	WATERMAIN	150 WM	LOCATION APPROVED UNDERGROUND STRUCTURES
HYDRANT	HYDRANT	HYDRANT	MTS	HYDRANT	HYDRANT	HYDRANT	B.M. ELEV. FIELD BOOK #:
VALVE	VALVE	VALVE	TRAFFIC SIGNALS	VALVE	VALVE	VALVE	POSTED TO LBIS
525 LDS	LAND DRAINAGE SEWER	525 LDS	50 GAS	50 GAS	50 GAS	50 GAS	
375 WWS	WASTEWATER SEWER	375 WWS	SURVEY BAR	250 WWS	WASTEWATER SEWER	250 WWS	
MANHOLE	MANHOLE	MANHOLE	FENCE	C PROFILE	C PROFILE	C PROFILE	
CATCH BASIN	CATCH BASIN	CATCH BASIN	POLE - HYDRO, MTS	GROUND ABOVE PIPE	GROUND ABOVE PIPE	GROUND ABOVE PIPE	
CURB INLET	CURB INLET	CURB INLET	CURB STOP	C DITCH (NORTH & WEST)	C DITCH (NORTH & WEST)	C DITCH (NORTH & WEST)	
JUNCTIONS	JUNCTIONS	JUNCTIONS	GUY ANCHOR	GUY ANCHOR	GUY ANCHOR	GUY ANCHOR	
CULVERT	CULVERT	CULVERT	LIGHT STANDARD	GUTTER (NORTH & WEST)	GUTTER (NORTH & WEST)	GUTTER (NORTH & WEST)	
ANODE	ANODE	ANODE	TREE	GUTTER (SOUTH & EAST)	GUTTER (SOUTH & EAST)	GUTTER (SOUTH & EAST)	
EXISTING	LEGEND-PLAN	PROPOSED	EXISTING	LEGEND-PLAN	PROPOSED	EXISTING	

1	ISSUED FOR PIPE SUPPLY BID	09.18.06	CJH								
NO.	REVISIONS	DATE	BY	DATE	BY	DATE	BY	DATE	BY	DATE	BY

CITY OF WINNIPEG WATER AND WASTE ENGINEERING DIVISION

DESIGNED BY: TW
DRAWN BY: CJH
HOR. SCALE: 1:1000
VERTICAL: 1:50

CHECKED BY: TW
APPROVED BY: KZ
RELEASED FOR CONSTRUCTION

ENGINEER'S SEAL

ORIGINAL SIGNED BY
K.R. ZUREK
06/09/18

THE CITY OF WINNIPEG WATER AND WASTE DEPARTMENT

2006 RENEWAL OF THE HART WASTEWATER PUMPING STATION FORCEMAIN RED RIVER CROSSING AND STATION PIPING MODIFICATIONS

RED RIVER CROSSING
PLAN AND PROFILE

SHEET 1 OF 5
CITY DRAWING NUMBER
05961