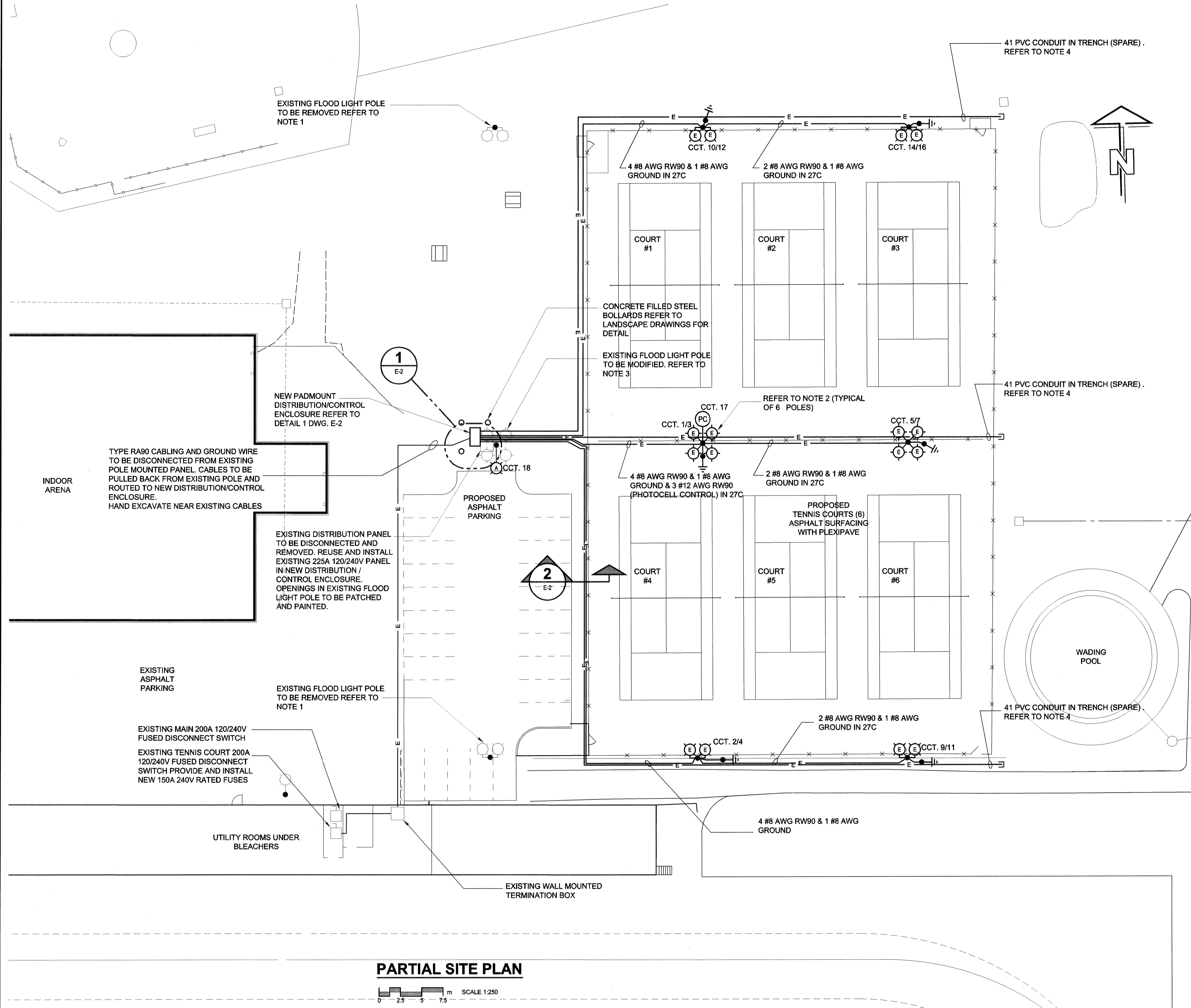


D SIZE 22" x 34" (559mm x 864mm)

PLOT: 06/09/12 3:47:29 PM

UMA FILE NAME: 0265-388-00_01-E-0001_RX.dwg Saved By: jiberg

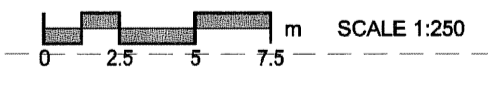


- NOTES**
- EXISTING FLOOD LIGHT POLE AND POLE MOUNTED LUMINAIRES TO BE TURNED OVER TO THE CITY. CONCRETE BASE TO BE REMOVED TO MINIMUM DEPTH OF 1m BELOW FIN. GRADE
 - PROVIDE AND INSTALL NEW LAMPS FOR EXISTING LUMINAIRES. CLEAN REFLECTOR AND LENS. VERIFY GASKETING IS NOT CRACKED OR BROKEN, REPLACE AS REQUIRED. VERIFY POWER CORDS FROM POLE TOP TO LUMINAIRE ARE NOT CRACKED OR WORN, REPLACE AS REQUIRED. EXISTING BURIED CABLING TO POLES TO BE DISCONNECTED AT HANDHOLE, PULLED BACK 600mm FROM POLE BASE CUT AND ABANDONED.
 - EXISTING FLOOD LIGHT POLE TO REMAIN. FLOOD LIGHTS TO BE REMOVED (TOTAL OF 4). INSTALL NEW COBRA HEAD STYLE LUMINAIRE ON 1800mm (6 ft.) DAVIT ARM. PROVIDE AND INSTALL NEW #12 AWG RW90 IN POLE FROM LUMINAIRE TO HAND HOLE. INSTALL 2 #12 AWG RW90 IN 27C IN TRENCH FROM NEW DISTRIBUTION/CONTROL ENCLOSURE TO EXISTING CONDUIT IN FLOOD LIGHT POLE CONCRETE BASE
 - PROVIDE EMPTY CONDUIT FROM NEW DISTRIBUTION/CONTROL ENCLOSURE FOR FUTURE EXPANSION OF TENNIS COURT LIGHTING. CONDUIT TO EXTEND PAST EAST FENCE 600mm AND CAPPED. PROVIDE NYLON PULL CORD IN CONDUIT. COORDINATE TRENCH AND CONDUIT LOCATION WITH CONTRACTOR.

- LEGEND**
- (A) LUMINAIRE, TYPE AS LISTED IN LUMINAIRE SCHEDULE
 - 20mm Ø x 3m LONG COPPER CLAD STEEL GROUND ROD. SET ROD VERTICALLY IN GRADE. TOP OF GROUND ROD AT 300mm BELOW FIN. GRADE
 - E ELECTRICAL FEEDER / CONDUIT
 - (PC) PHOTOCELL

LUMINAIRE SCHEDULE					
TYPE	MANUFACTURER	CAT. NO.	LAMP	VOLTAGE	REMARKS
A	AMERICAN ELECTRIC LIGHTING	115-15-S-RN-120-R3-FG-CSA-PC	150W HPS	120 V	COBRAHEAD, 120V, RECTOR BALLAST NORMAL POWER FACTOR, C/W PHOTOCELL & 1800 (6 ft.) DAVIT ARM
E	EXISTING	--	1000W MH	240 V	EXISTING POLE MTD. FLOOD LIGHT

PARTIAL SITE PLAN

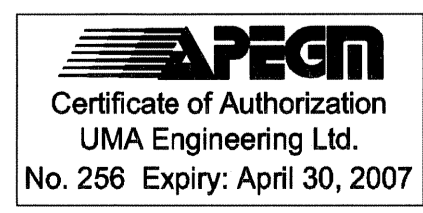


TENDER NO. 585-2006

LOCATION APPROVED
UNDERGROUND STRUCTURES

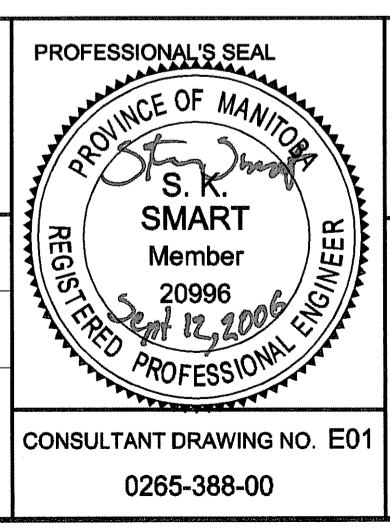
SUPR. U/G STRUCTURES DATE COMMITTEE

NOTE:
LOCATION OF UNDERGROUND STRUCTURES AS SHOWN ARE BASED ON THE BEST INFORMATION AVAILABLE. BUT NO GUARANTEE IS GIVEN THAT ALL EXISTING UTILITIES ARE SHOWN OR THAT THE GIVEN LOCATIONS ARE EXACT. CONFIRMATION OF EXISTENCE AND EXACT LOCATION OF ALL SERVICES MUST BE OBTAINED FROM THE INDIVIDUAL UTILITIES BEFORE PROCEEDING WITH CONSTRUCTION.



NO.	REVISIONS	DATE	BY
0	ISSUED FOR CONSTRUCTION	08/09/11	SCK

DESIGNED BY		CHECKED BY	
SCK			
DRAWN BY		APPROVED BY	
SCK			
HOR. SCALE		RELEASED FOR CONSTRUCTION	
VERT. SCALE			
DATE		DATE	



THE CITY OF WINNIPEG
PUBLIC WORKS DEPARTMENT

CINDY KLASSEN RECREATION COMPLEX
TENNIS COURT REDEVELOPMENT

PARTIAL SITE PLAN
LEGEND AND LUMINAIRE SCHEDULE

CITY DRAWING NUMBER X000-00-00
SHEET 1 OF 2
REV E1 0