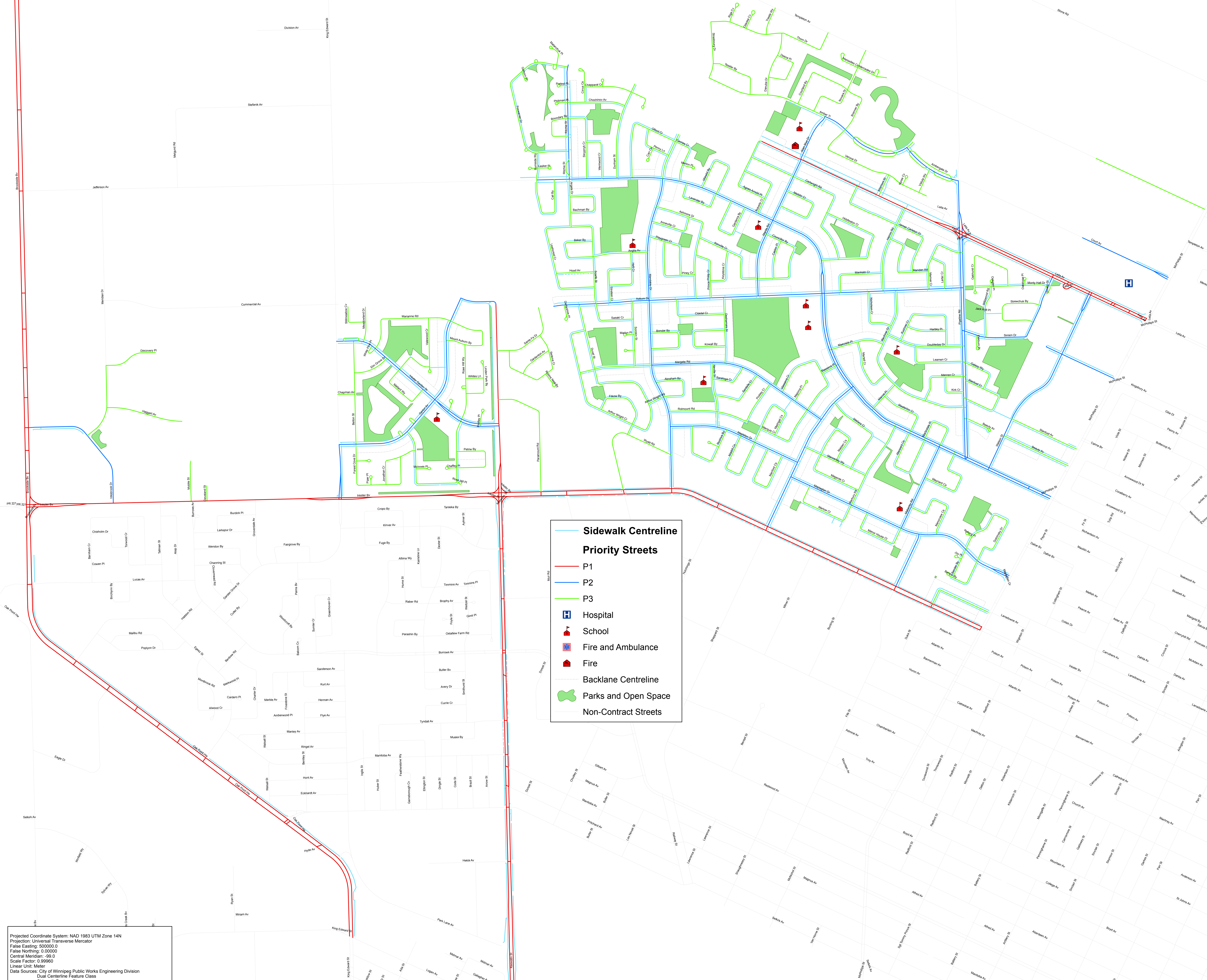
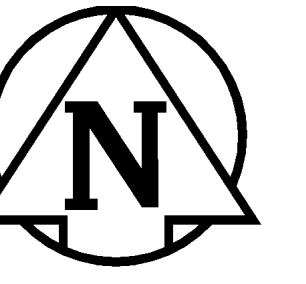


The City of Winnipeg North Area Northwest Snow Contract Zone Sidewalks (on P1, P2 and P3 Streets)



Projected Coordinate System: NAD 1983 UTM Zone 14N
 Projection: Universal Transverse Mercator
 False Easting: 500000.0
 False Northing: 0.00000
 Central Meridian: -99.0
 Scale Factor: 0.99960
 Linear Unit: Meter
 Data Sources: City of Winnipeg Public Works Engineering Division
 Dual Centerline Feature Class
 Sidewalk Feature Class
 Alley Centerline Feature Class
 Parks Feature Class
 City of Winnipeg Public Works Engineering Division
 City of Winnipeg Public Works Parks and Open Space Division
 Parks Feature Class