

**SEWER SERVICE INFORMATION (ID #42425) \***

DISTANCE FROM 3RD MH W. OF STADACONA ST (MH ID #79577)

1.9 W	SERVICE CONNECTION N
2.2 W	SERVICE CONNECTION S
9.1 W	SERVICE CONNECTION N
9.7 W	SERVICE CONNECTION S
16.8 W	SERVICE CONNECTION N
17.3 W	SERVICE CONNECTION S
22.7 W	SERVICE CONNECTION S
26.4 W	SERVICE CONNECTION N
29.4 W	SERVICE CONNECTION S
35.3 W	SERVICE CONNECTION N
38.4 W	SERVICE CONNECTION AT 12 O'CLOCK
40.9 W	SERVICE CONNECTION S
41.6 W	SERVICE CONNECTION N
44.7 W	SERVICE CONNECTION N
48.3 W	SERVICE CONNECTION S
53.9 W	SERVICE CONNECTION N
55.2 W	SERVICE CONNECTION N
56.3 W	SERVICE CONNECTION S
63.3 W	SERVICE CONNECTION N
63.9 W	SERVICE CONNECTION S
64.3 W	SERVICE CONNECTION N
71.2 W	SERVICE CONNECTION S
71.9 W	SERVICE CONNECTION N
78.8 W	SERVICE CONNECTION S
80.0 W	SERVICE CONNECTION S
80.8 W	SERVICE CONNECTION N
81.5 W	SERVICE CONNECTION N
90.1 W	SERVICE CONNECTION N
93.9 W	SERVICE CONNECTION S
99.0 W	SERVICE CONNECTION N

\* - INFORMATION FROM SEWER VIDEO INSPECTION

**GORDON AVENUE**

**GENERAL NOTES**

1. CONTRACTOR TO VERIFY LIMITS OF SEWER REPAIRS PRIOR TO EXCAVATION BY MEANS OF VIDEO INSPECTION.
2. CONTRACTOR TO ASSIST WITH VISUAL INSPECTION OF EXISTING SERVICES TO DETERMINE IF SERVICE RENEWAL IS REQUIRED.

**WARNING**

IF POWER EQUIPMENT OR EXPLOSIVES ARE TO BE USED FOR EXCAVATION ON THIS PROJECT THE CONTRACTOR MUST:

1. NOTIFY THE GAS COMPANY OF THE PROPOSED LOCATION OF EXCAVATION.
2. TAKE PRECAUTION TO AVOID DAMAGE TO GAS COMPANY INSTALLATIONS SEE PROVINCIAL REGULATION 210/72 FOR DETAILS

**METRIC**

WHOLE NUMBERS INDICATE MILLIMETRES  
DECIMALIZED NUMBERS INDICATE METRES

150 mm W.M.	WATERMAIN	150 mm W.M.	HYDRO	150 mm W.M.	WATERMAIN	150 mm W.M.
Hydrant	HYDRANT	Hydrant	M.T.S.	Hydrant	HYDRANT	Hydrant
Valve	VALVE	Valve	CONCRETE	Valve	VALVE	Valve
300 mm L.D.S.	LAND DRAINAGE SEWER	300 mm L.D.S.	ASPHALT	300 mm L.D.S.	LAND DRAINAGE SEWER	300 mm L.D.S.
250 mm W.W.S.	WASTE WATER SEWER	250 mm W.W.S.	PROPERTY LINE	250 mm W.W.S.	WASTE WATER SEWER	250 mm W.W.S.
Manhole	MANHOLE	Manhole	SURVEY BAR	Manhole	MANHOLE	Manhole
Catch Basin	CATCH BASIN	Catch Basin	SERVICE VALVE	Catch Basin	CATCH BASIN	Catch Basin
Curb Inlet	CURB INLET	Curb Inlet	I.P.S.	Curb Inlet	CURB INLET	Curb Inlet
Junctions	JUNCTIONS	Junctions	BUILDING	Junctions	JUNCTIONS	Junctions
Culvert	CULVERT	Culvert		Culvert	CULVERT	Culvert
Gas	GAS	Gas		Gas	GAS	Gas
EXISTING	LEGEND-PLAN	PROPOSED	EXISTING	LEGEND-PLAN	PROPOSED	EXISTING
				LEGEND-PROFILE	PROPOSED	

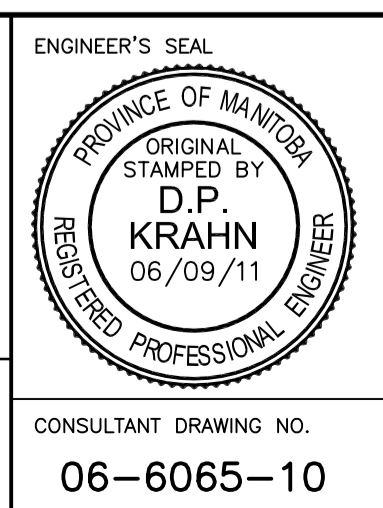
**UNDERGROUND STRUCTURES**

SUPPLY U/G STRUCTURES COMMITTEE DATE

NOTE:  
LOCATION OF UNDERGROUND STRUCTURES AS SHOWN ARE BASED ON THE BEST INFORMATION AVAILABLE. BUT NO GUARANTEE IS GIVEN THAT ALL EXISTING UTILITIES ARE SHOWN OR THAT THE GIVEN LOCATIONS ARE EXACT. CONFIRMATION OF EXISTENCE AND EXACT LOCATION OF ALL SERVICES MUST BE OBTAINED FROM THE INDIVIDUAL UTILITIES BEFORE PROCEEDING WITH CONSTRUCTION.

B.M. ELEV.				
DESIGNED BY	J.K.M.			
DRAWN BY	J.K.M.			
CHECKED BY	S.C.C.			
APPROVED BY				
HOR. SCALE	1:500			
VERTICAL				
2	RELEASED FOR CONSTRUCTION	06/09/06	S.C.C.	
1	SUBMITTED TO W&W FOR REVIEW	06/08/25	S.C.C.	
NO.	REVISIONS	DATE	BY	DATE

RELEASER FOR CONSTRUCTION	ORIGINAL SIGNED BY KAS ZUREK, P.Eng.	DATE	06/09/11
---------------------------	--------------------------------------	------	----------



**THE CITY OF WINNIPEG**  
WATER AND WASTE DEPARTMENT

2006 SEWER RENEWALS AND REPAIRS, CONTRACT 13  
GORDON AVENUE  
3RD MH W. OF STADACONA ST  
TO MH AT LACY ST

CITY DRAWING NUMBER **05942**  
SHEET 10 OF 23  
BID OPPORTUNITY 560-2006

CONSULTANT DRAWING NO. **06-6065-10**