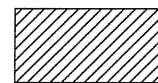
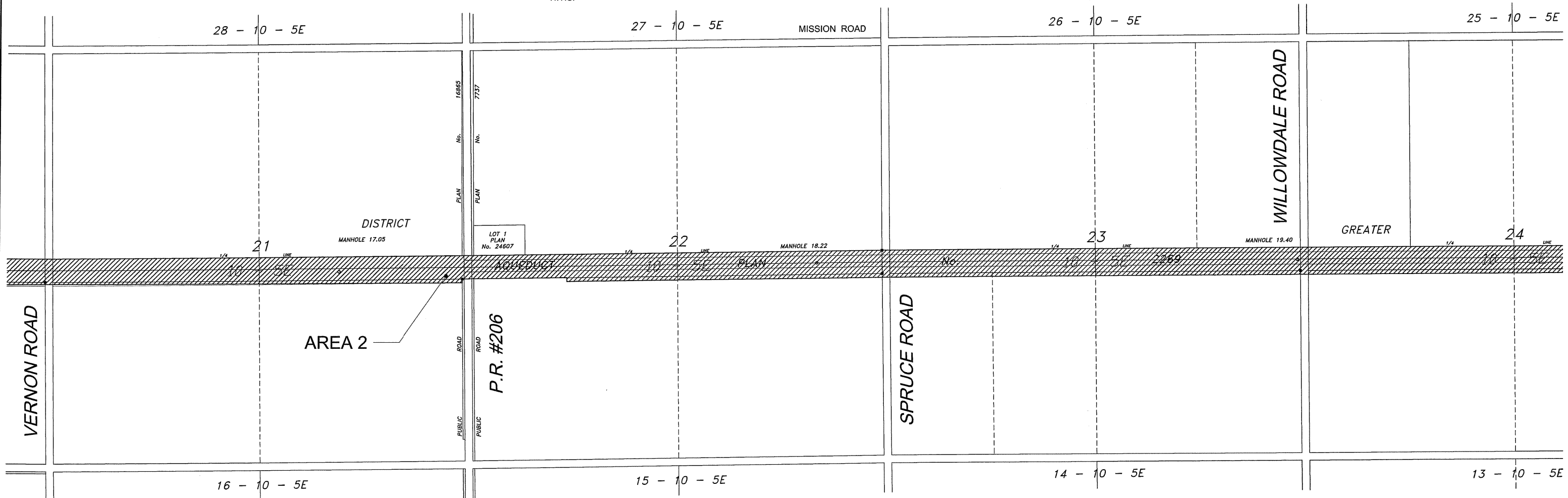
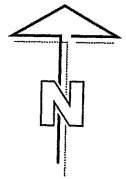


MILE 19.2  
TYPICAL SECTION at HYDRO TOWERS  
N.T.S.



AREAS TO BE MAINTAINED

**LOCATION APPROVED**  
UNDERGROUND STRUCTURES

SUPR. U/G STRUCTURES DATE COMMITTEE

**NOTE:**  
LOCATION OF UNDERGROUND STRUCTURES AS SHOWN ARE BASED ON THE BEST INFORMATION AVAILABLE. BUT NO GUARANTEE IS GIVEN THAT ALL EXISTING UTILITIES ARE SHOWN OR THAT THE GIVEN LOCATIONS ARE EXACT. CONFIRMATION OF EXISTENCE AND EXACT LOCATION OF ALL SERVICES MUST BE OBTAINED FROM THE INDIVIDUAL UTILITIES BEFORE PROCEEDING WITH CONSTRUCTION.

NO.	REVISIONS	YYMMDD	BY
0	ISSUED FOR CONSTRUCTION	06/08/14	KMB

UMA AECOM	
<small>© 2006 UMA ENGINEERING LTD. ALL RIGHTS RESERVED.</small>	
DESIGNED BY MJR	CHECKED BY <i>CCM</i>
DRAWN BY WJd	APPROVED BY <i>CCM</i>
HOR. SCALE NTS	RELEASED FOR CONSTRUCTION ORIGINAL SIGNED BY R. SOROKOWSKI
VERT. SCALE	DATE AUGUST 14, 2006

**APEGM**  
Certificate of Authorization  
UMA Engineering Ltd.  
No. 256 Expiry: April 30, 2007

PROFESSIONAL'S SEAL

C. C. MACEY  
REGISTERED ENGINEER

CONSULTANT DRAWING NO. 02  
D265-213-00

**THE CITY OF WINNIPEG**  
WATER AND WASTE DEPARTMENT

SHOAL LAKE AQUEDUCT  
RIGHT OF WAY MAINTENANCE  
MILE 12.87 to MILE 26.5

LOCATION PLAN  
MILE 16.3 to 19.9

SHEET 2 OF 4  
CITY DRAWING NUMBER  
SLA-02  
REV 0