

SEWER JUNCTION INFORMATION FROM SEWER VIDEO INSPECTION S-MA60008825

DISTANCE FROM MH S-MH60007240

21.30	E	150	SOUTH	298 BARTLET RESIDENTIAL
21.90	E	150	NORTH	297 BARTLET RESIDENTIAL
34.30	E	150	NORTH	CI LEAD
37.00	E	150	SOUTH	294 BARTLET RESIDENTIAL
37.60	E	150	NORTH	293 BARTLET RESIDENTIAL
47.30	E	150	SOUTH	CI LEAD
48.30	E	150	SOUTH	UNKNOWN
52.00	E	150	SOUTH	284 BARTLET RESIDENTIAL
52.60	E	150	NORTH	285 BARTLET RESIDENTIAL
67.20	E	150	SOUTH	280 BARTLET RESIDENTIAL
67.90	E	150	NORTH	281 BARTLET RESIDENTIAL
82.20	E	150	SOUTH	278 BARTLET RESIDENTIAL
82.80	E	150	NORTH	275 BARTLET RESIDENTIAL

SEWER SERVICE INFORMATION

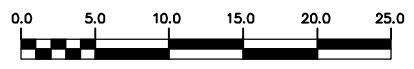
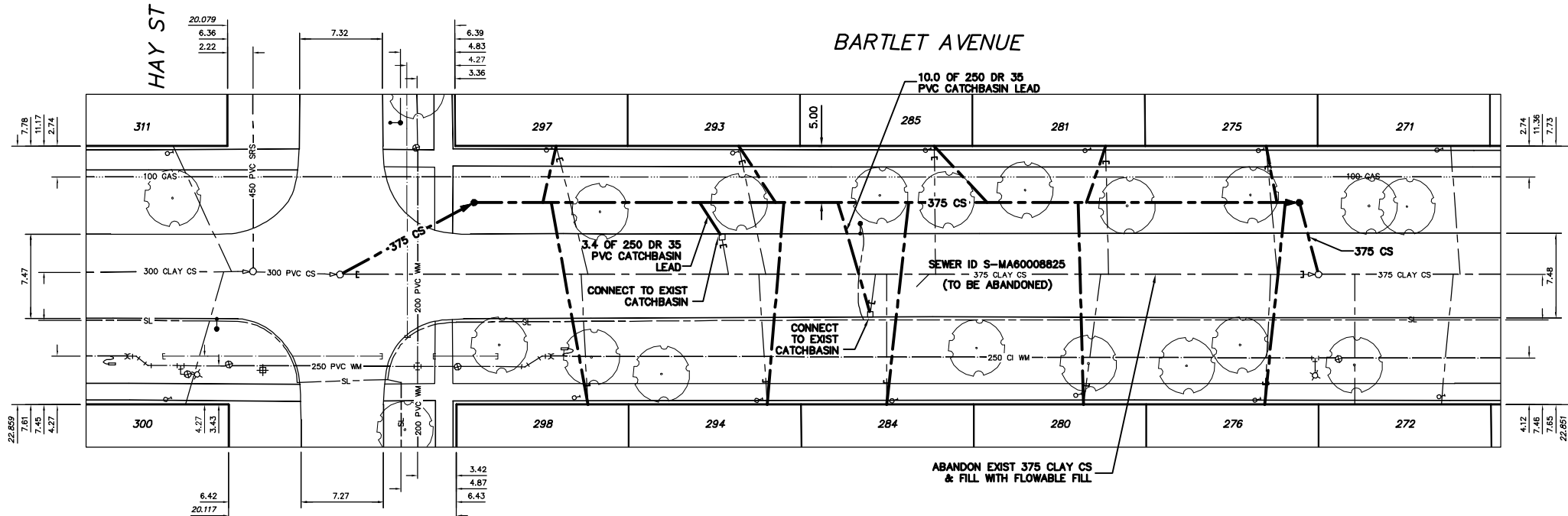
ADDRESS	SIZE	€ DIST	JUNCTION TIE
271 BARTLET AVE RESIDENTIAL	150	-	3.49 W OF EL
272 BARTLET AVE RESIDENTIAL	150	-	12.50 E 1ST MH E OF HAY
275 BARTLET AVE RESIDENTIAL	150	-	4.40 W OF EL
276 BARTLET AVE RESIDENTIAL	150	-	4.45 W OF EL
277 BARTLET AVE RESIDENTIAL	150	-	1.72 W 1ST MH E OF HAY
278 BARTLET AVE RESIDENTIAL	150	-	4.76 W OF EL
279 BARTLET AVE RESIDENTIAL	150	-	2.20 E 1ST MH E OF HAY
280 BARTLET AVE RESIDENTIAL	150	-	5.52 W OF EL
281 BARTLET AVE RESIDENTIAL	150	-	16.12 W 1ST MH E OF HAY
282 BARTLET AVE RESIDENTIAL	150	-	3.49 W OF EL
283 BARTLET AVE RESIDENTIAL	150	-	16.82 W 1ST MH E OF HAY
284 BARTLET AVE RESIDENTIAL	150	-	6.41 W OF EL
285 BARTLET AVE RESIDENTIAL	150	-	31.52 W 1ST MH E OF HAY
286 BARTLET AVE RESIDENTIAL	150	-	3.39 W OF EL
287 BARTLET AVE RESIDENTIAL	150	-	34.42 W 1ST MH E OF HAY
288 BARTLET AVE RESIDENTIAL	150	-	5.40 W OF EL
289 BARTLET AVE RESIDENTIAL	150	-	34.90 E OF MH AT HAY
290 BARTLET AVE RESIDENTIAL	150	-	2.99 W OF EL
291 BARTLET AVE RESIDENTIAL	150	-	23.50 E OF MH AT HAY
292 BARTLET AVE RESIDENTIAL	150	-	6.29 W OF EL
293 BARTLET AVE RESIDENTIAL	150	-	39.40 E OF MH AT HAY
294 BARTLET AVE RESIDENTIAL	150	-	3.60 W OF EL
295 BARTLET AVE RESIDENTIAL	150	-	24.20 E OF MH AT HAY
296 BARTLET AVE RESIDENTIAL	150	-	3.77 W OF EL
297 BARTLET AVE RESIDENTIAL	150	-	6.37 W MH ON W € HAY
298 BARTLET AVE RESIDENTIAL	150	-	4.80 W OF EL
299 BARTLET AVE RESIDENTIAL	150	-	7.59 W MH ON W € HAY

NOTE: CHAINAGES SHOWN ARE ALONG N CL OF BARTLET AVE.

WATER SERVICE INFORMATION

ADDRESS	SIZE(mm) & TYPE (STREET)	SIZE(mm) & TYPE (PROP)	SHORT & LONG MEASUREMENT	CORP. LOCATION	REMARKS
271 BARTLET AVE RESIDENTIAL	20 LEAD	12	-	OPP S/C	-
272 BARTLET AVE RESIDENTIAL	12 LEAD	12	86.66 EEL HAY	0.2 E OF S/C	-
275 BARTLET AVE RESIDENTIAL	20 COPPER	20	-	OPP S/C	-
276 BARTLET AVE RESIDENTIAL	12 COPPER	12	71.03 EEL HAY	0.2 W OF S/C	-
280 BARTLET AVE RESIDENTIAL	12 LEAD	12	70.51 EEL HAY	0.2 W OF S/C	-
281 BARTLET AVE RESIDENTIAL	20 COPPER	20	54.69 EEL HAY	OPP S/C	-
284 BARTLET AVE RESIDENTIAL	12 COPPER	12	56.64 EEL HAY	OPP S/C	-
285 BARTLET AVE RESIDENTIAL	12 LEAD	12	38.47 EEL HAY	OPP S/C	-
286 BARTLET AVE RESIDENTIAL	12 COPPER	12	41.54 EEL HAY	0.9 W OF S/C	-
287 BARTLET AVE RESIDENTIAL	20 COPPER	20	24.49 EEL HAY	OPP S/C	-
289 BARTLET AVE RESIDENTIAL	20 COPPER	20	26.48 EEL HAY	0.9 W OF S/C	-
293 BARTLET AVE RESIDENTIAL	20 COPPER	20	8.07 EEL HAY	2.4 E OF S/C	-
294 BARTLET AVE RESIDENTIAL	20 COPPER	20	10.42 EEL HAY	OPP S/C	-
297 BARTLET AVE RESIDENTIAL	20 COPPER	20	5.56 WML HAY	0.3 E OF S/C	-
298 BARTLET AVE RESIDENTIAL	20 COPPER	20	5.30 WML HAY	0.6 E OF S/C	-
299 BARTLET AVE RESIDENTIAL	20 COPPER	20	-	-	-

FOR CONSTRUCTION NOTES SEE DRAWING 05928



METRIC
WHOLE NUMBERS INDICATE MILLIMETRES
DECIMALIZED NUMBERS INDICATE METRES

WARNING
IF POWER EQUIPMENT OR EXPLOSIVES ARE TO BE USED FOR EXCAVATION ON THIS PROJECT THE CONTRACTOR MUST:
1) NOTIFY THE GAS COMPANY OF THE PROPOSED LOCATION OF EXCAVATION.
2) TAKE PRECAUTION TO AVOID DAMAGE TO GAS COMPANY INSTALLATIONS.
SEE PROVINCIAL REGULATION 210/72 FOR DETAILS

200 WM	WATERMAIN	200 WM	SL, HYDRO	150 WM	WATERMAIN	150 WM
⊕	HYDRANT	⊕	MTS	⊕	HYDRANT	⊕
⊙	VALVE	⊙	TRAFFIC SIGNALS	⊙	VALVE	⊙
525 LDS	LAND DRAINAGE SEWER	525 LDS	GAS	50 GAS	300 LDS	LAND DRAINAGE SEWER
375 WWS	WASTEWATER SEWER	375 WWS	SURVEY BAR	250 WWS	250 WWS	WASTEWATER SEWER
○	MANHOLE	○	FENCE	⊕	PROFILE	⊕
□	CATCH BASIN	□	POLE - HYDRO, MTS	⊕	GROUND ABOVE PIPE	⊕
▽	CURB INLET	▽	CURB STOP	⊕	⊕ DITCH (NORTH & WEST)	⊕
⊕	JUNCTIONS	⊕	GUY ANCHOR	⊕	⊕ DITCH (SOUTH & EAST)	⊕
⊕	CULVERT	⊕	LIGHT STANDARD	⊕	⊕ GUTTER (NORTH & WEST)	⊕
⊕	ANODE	⊕	TREE	⊕	⊕ GUTTER (SOUTH & EAST)	⊕
EXISTING	LEGEND-PLAN	PROPOSED	EXISTING	LEGEND-PLAN	PROPOSED	EXISTING
EXISTING	LEGEND-PROFILE	PROPOSED	EXISTING	LEGEND-PROFILE	PROPOSED	EXISTING

LOCATION APPROVED UNDERGROUND STRUCTURES

NOTE: LOCATION OF UNDERGROUND STRUCTURES AS SHOWN ARE BASED ON THE BEST INFORMATION AVAILABLE BUT NO GUARANTEE IS GIVEN THAT ALL EXISTING UTILITIES ARE SHOWN OR THAT THE GIVEN LOCATIONS ARE EXACT. CONFIRMATION OF EXISTENCE AND EXACT LOCATION OF ALL SERVICES MUST BE OBTAINED FROM THE INDIVIDUAL UTILITIES BEFORE PROCEEDING WITH CONSTRUCTION.

B.M. ELEV.	FIELD BOOK #:
POSTED TO LIS	
NO. REVISIONS	DATE BY

CITY OF WINNIPEG
WATER AND WASTE ENGINEERING DIVISION

DESIGNED BY: SC
CHECKED BY: TW

DRAWN BY: CJH
APPROVED BY: KZ

HOR. SCALE: 1:250
VERTICAL: 1:50

RELEASED FOR CONSTRUCTION

DATE: 2006 08 31

ENGINEER'S SEAL

ORIGINAL SIGNED BY S.R.J. COURNOYER 06/08/31

THE CITY OF WINNIPEG
WATER AND WASTE DEPARTMENT

2006 COMBINED SEWER RENEWALS AND SEWER REPAIRS
BARTLET AVENUE
MH AT Q HAY STREET TO 1ST MH E OF HAY STREET

SHEET 2 OF 11
CITY DRAWING NUMBER 05925

BID OPPORTUNITY: 540-2006
FILENAME: 05925.dwg
PLOT DATE: 2006 08 31