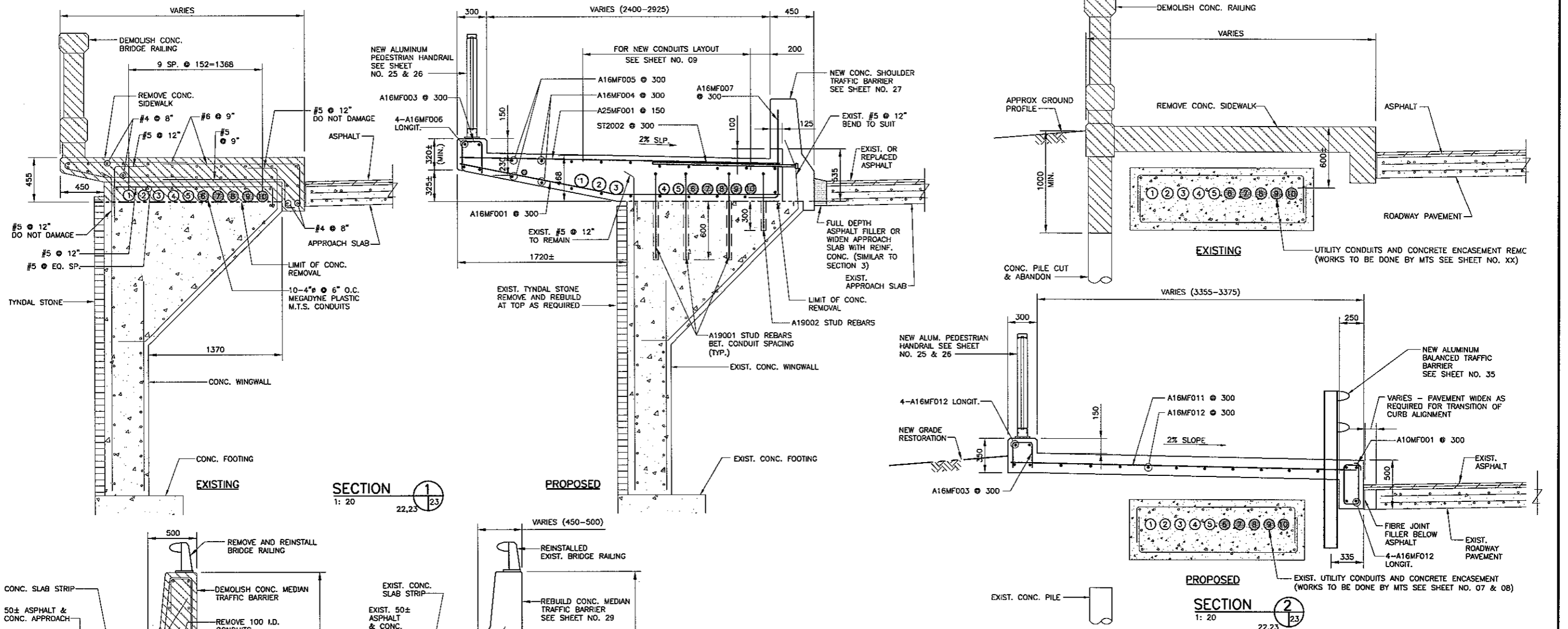
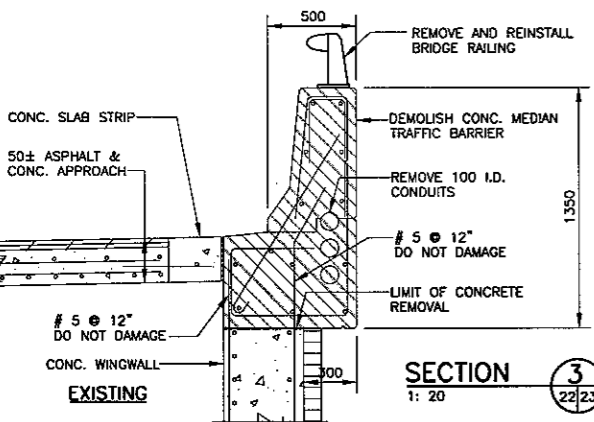


SOUTH END SIDEWALK ELEVATION
1:50 (LOOKING WEST)

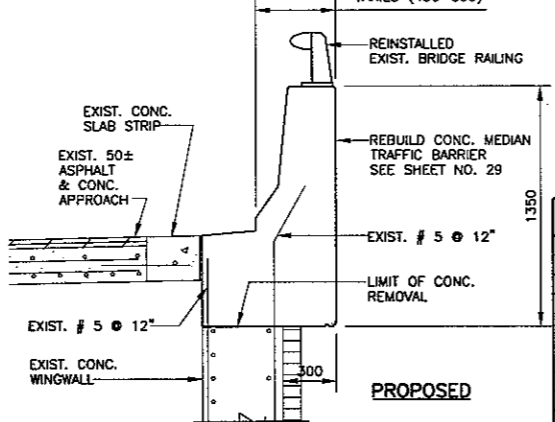


SECTION 1
1:20

SECTION 2
1:20



SECTION 3
1:20



SECTION 4
1:20

B.M. ELEV.	DESIGNED BY A.S.D.	 PROVINCE OF MANITOBA S.S. RIHAL REGISTERED PROFESSIONAL ENGINEER	 PROVINCE OF MANITOBA A.S. DERAJ REGISTERED PROFESSIONAL ENGINEER	THE CITY OF WINNIPEG PUBLIC WORKS DEPARTMENT MARYLAND TWIN BRIDGES REHABILITATION PROJECT EAST BRIDGE REHABILITATION	CITY DRAWING NUMBER 8108-06-23 SHEET 23 OF 38
	DRAWN BY N.B.G.				
	CHECKED BY R.A.W.				
	REVIEWED BY S.S.R.				
2 ISSUED FOR TENDER 1 ISSUED FOR CITY REVIEW	DATE 02/04/06 12/14/05	N.B.G.	HORIZ. SCALE AS NOTED VERTICAL AS NOTED	CONSULTANT PROJECT NO. 05-5069-1000	SOUTH APPROACH SECTIONS AND DETAILS