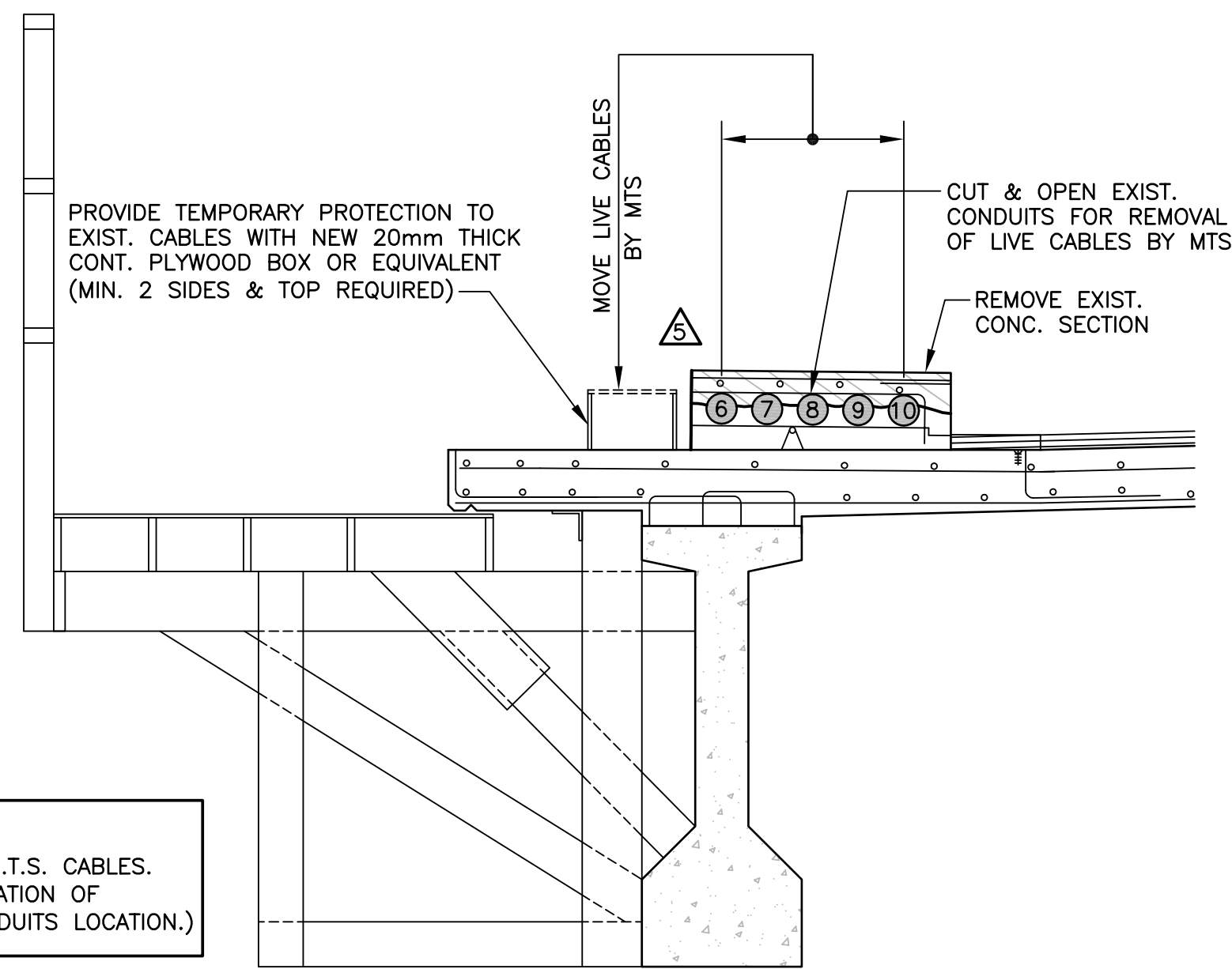


STAGE 1

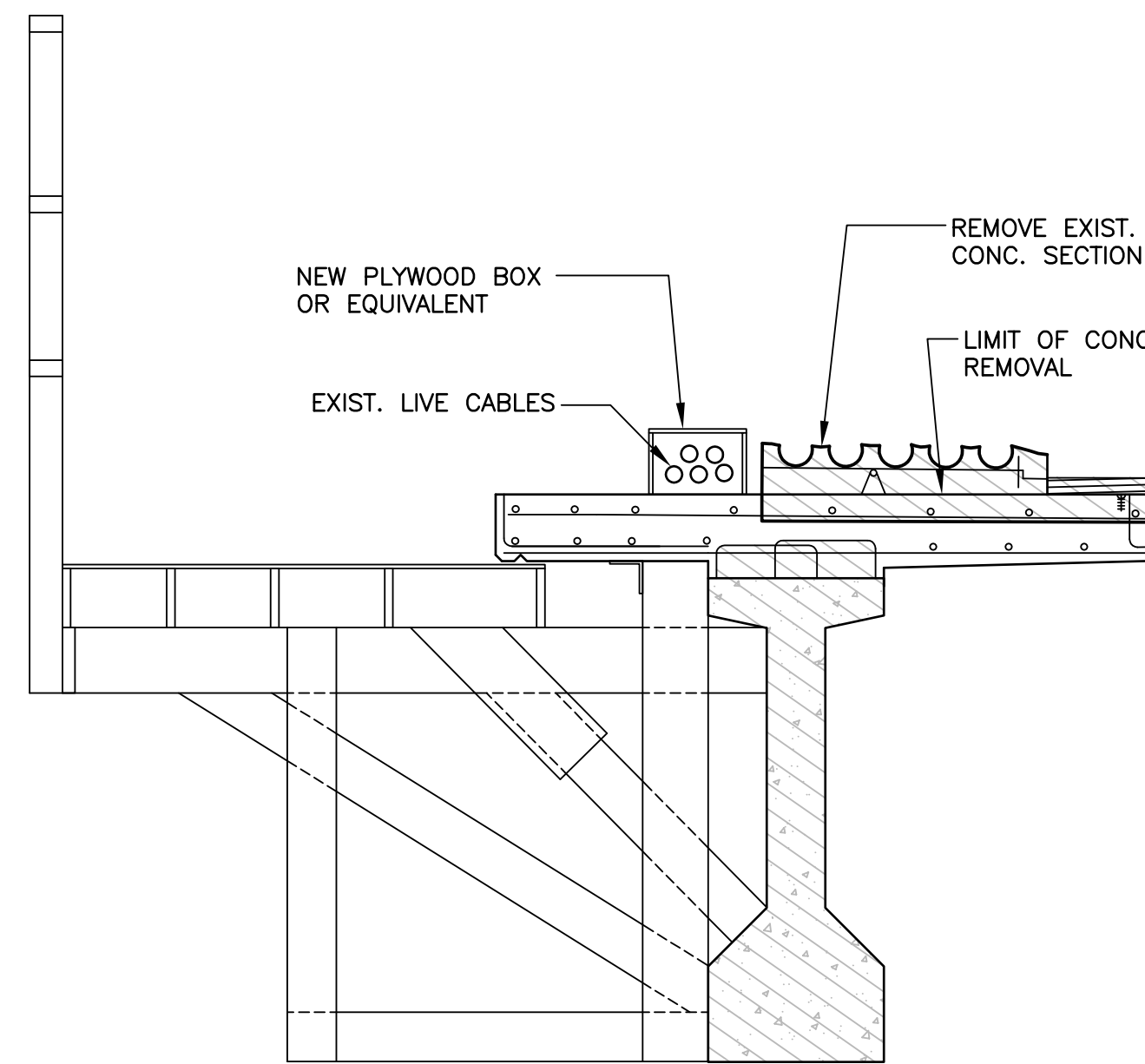
- A. INSTALL FALSEWORK PLATFORM. FALSEWORK SHOWN IS CONCEPTUAL ONLY AND IS TO BE DESIGNED BY THE CONTRACTOR.
- B. REMOVE CONCRETE AND CONDUITS 1 TO 5.

CAUTION:
DO NOT DAMAGE EXISTING M.T.S. CABLES. (DURING REMOVAL & RELOCATION OF LIVE CABLES INTO NEW CONDUITS LOCATION.)



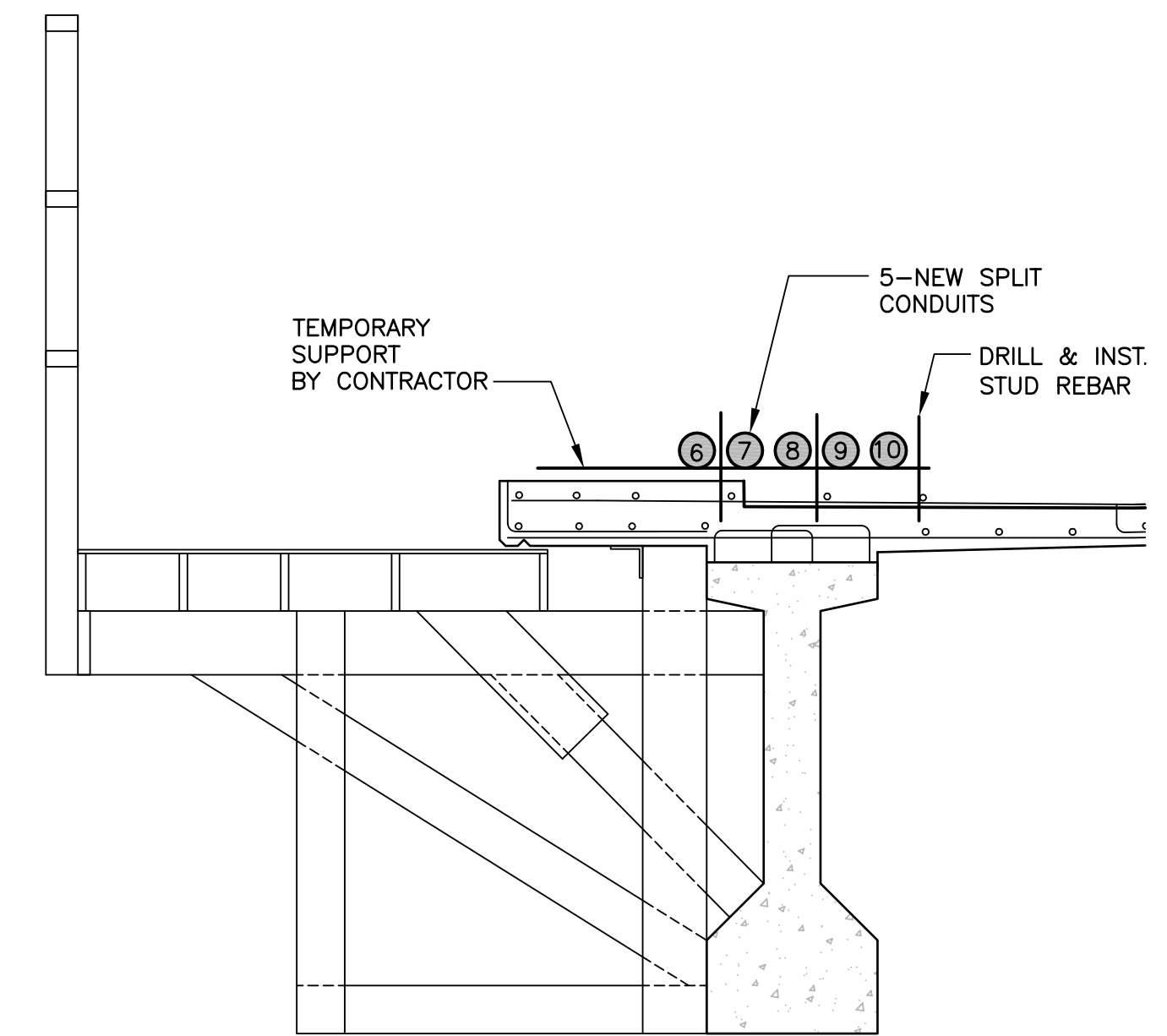
STAGE 2

- A. REMOVE CONCRETE AND OPEN TOP OF EXIST. CONDUITS 6 TO 10.
- B. MTS TO MOVE CABLES FROM OPENED CONDUITS TO TEMPORARY LOCATION.
- C. CONSTRUCT TEMPORARY PROTECTION BOX OVER CABLES. SAME DAY



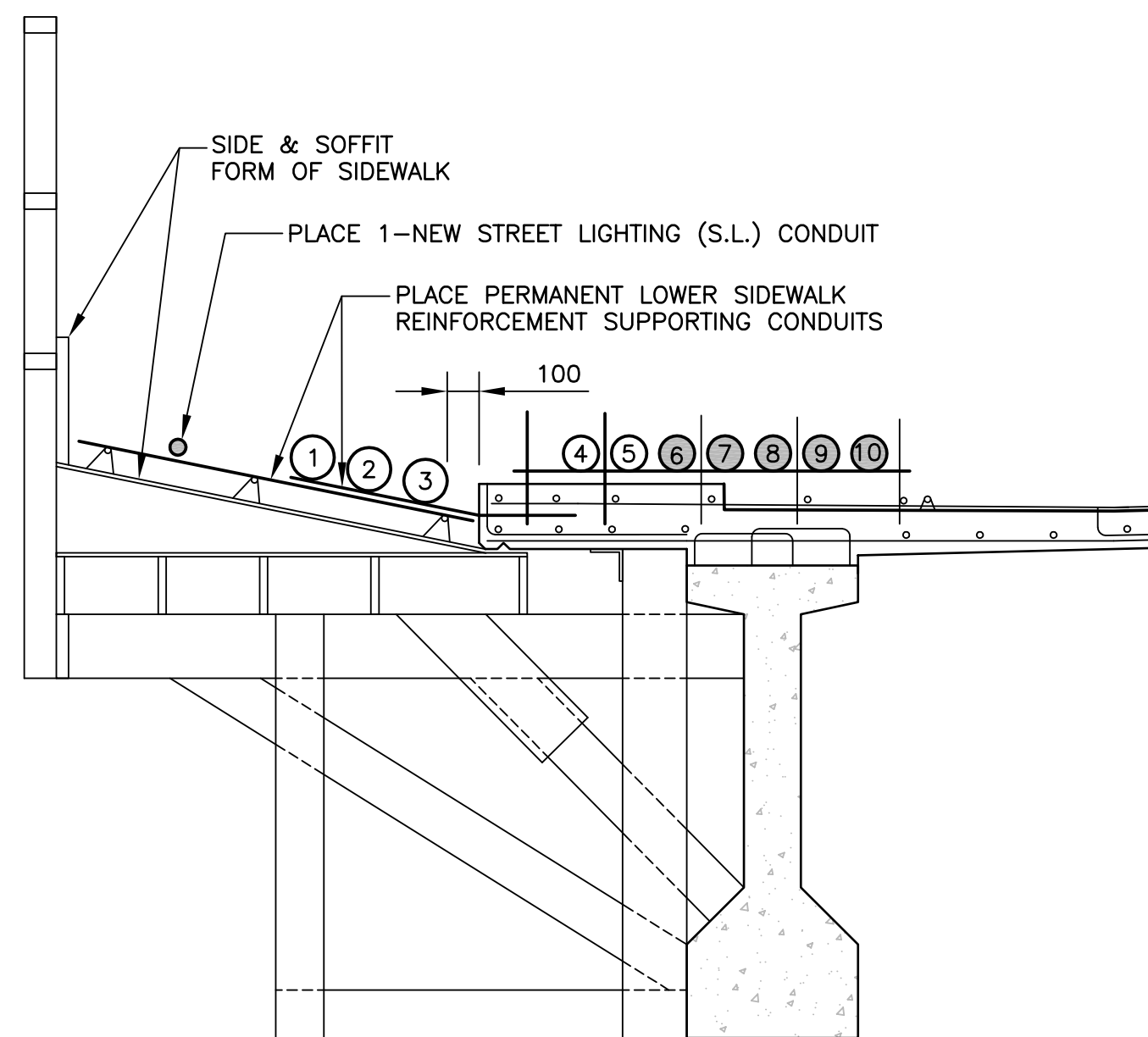
STAGE 3

- A. REMOVE REMAINING CONCRETE.



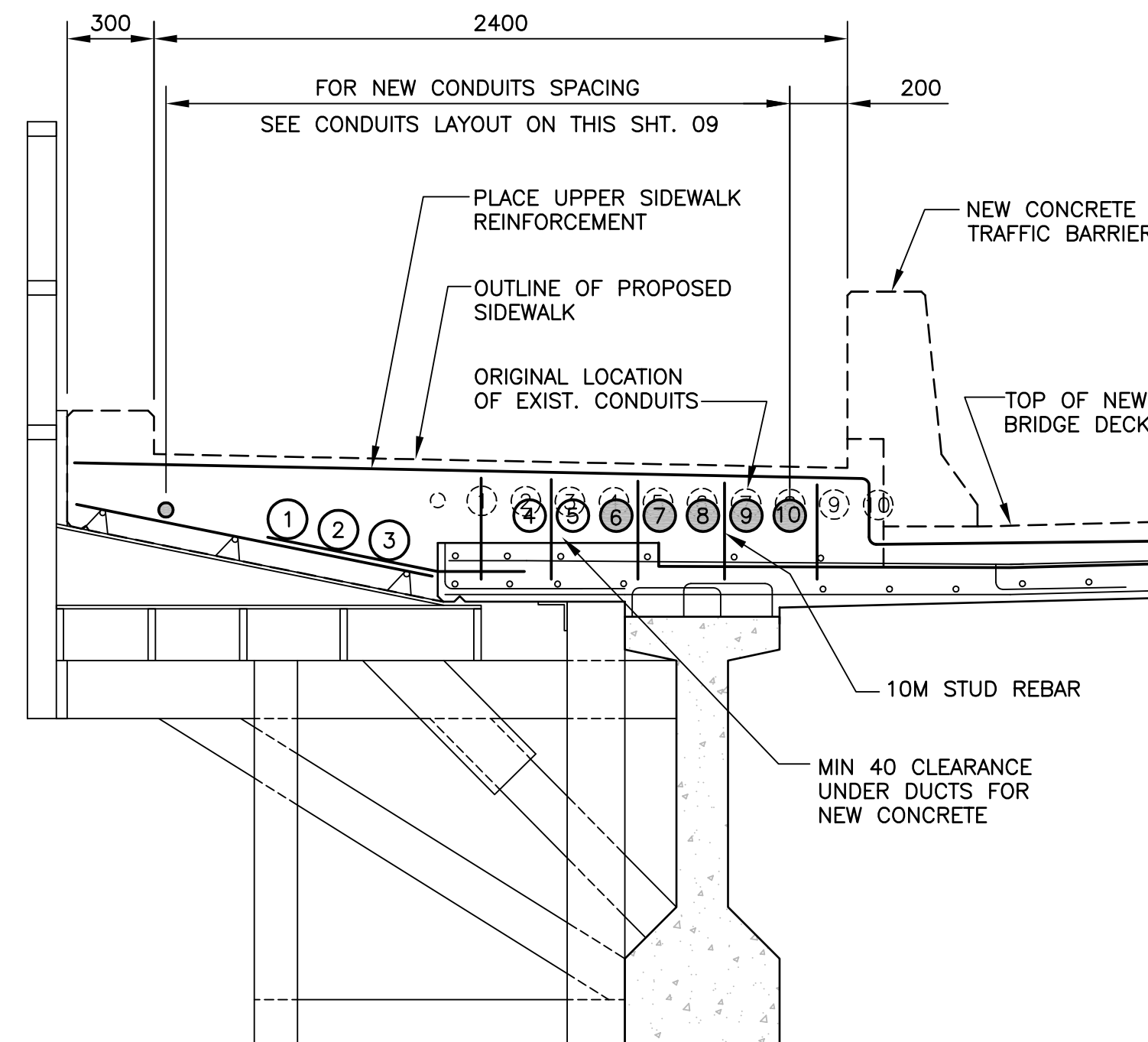
STAGE 4

- A. INSTALL 10M STUD REBAR.
- B. MTS TO MOVE CABLES FROM TEMPORARY LOCATION TO SPLIT CONDUITS.
- C. CLOSE CONDUITS 6 TO 10.



STAGE 5

- A. INSTALL REMAINING 10M STUD REBAR
- B. CONSTRUCT SIDE AND SOFFIT FORM OF SIDEWALK.
- C. PLACE PERMANENT LOWER SIDEWALK REINFORCING.
- D. PLACE NEW EMPTY CONDUITS 4 & 5.
- E. PLACE NEW EMPTY CONDUITS 1 TO 3



STAGE 6

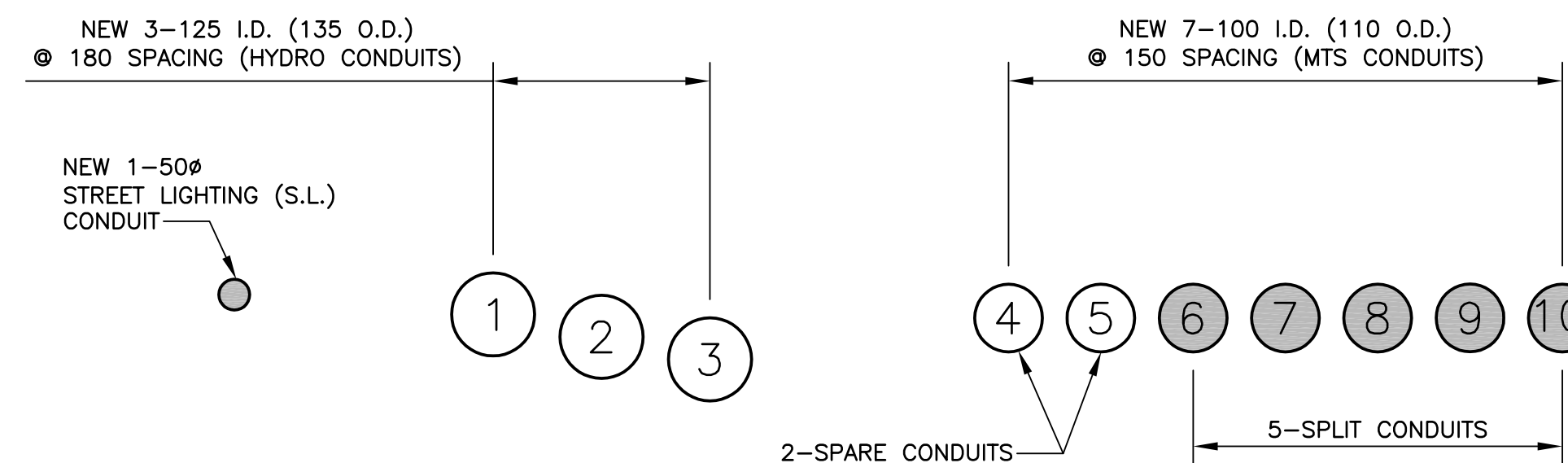
- A. PLACE UPPER SIDEWALK REINFORCEMENT AND CONCRETE.

LEGEND

- EXIST. CONC. REMOVAL
- OCCUPIED CONDUIT
- EMPTY CONDUIT

NOTES:

1. MTS CABLES EXIST IN CONDUIT NUMBERS 6 TO 10 AND ARE LIVE AND NOT TO BE DAMAGED DURING CONSTRUCTION. EXISTING CONDUITS 1 TO 5 ARE EMPTY AND ARE TO BE REMOVED WITHOUT SALVAGING.
2. SHOWN ON THIS DRAWING ARE STAGES OF REMOVAL AND PLACEMENT OF CONDUITS ON APPROACH SIDEWALK INTEGRAL WITH THE WINGWALLS.
3. THE FINAL METHOD OF FIXING UTILITY CONDUITS IN PLACE IS TO BE DESIGNED AND SUPPLIED BY THE CONTRACTOR.
4. EXTRA CONCRETE REMOVAL OVER GIRDER AT PIER NOT SHOWN HERE. REFER TO SHEET NO. 10 FOR THOSE DETAILS.



EAST STRUCTURE CONDUIT LAYOUT

1: 10

B.M. ELEV.	DESIGNED BY R.A.W.
	DRAWN BY N.B.G.
	CHECKED BY R.A.W.
	REVIEWED BY S.S.R.
	HOR. SCALE AS NOTED
	VERTICAL
NO. REVISIONS	DATE BY DATE

5	DIMENSION DELETED	02/22/06	N.B.G.
4	ISSUED FOR CITY TENDER	02/02/06	N.B.G.
3	ISSUED FOR CITY REVIEW	12/14/05	N.B.G.
2	FOR MTS & HYDRO REVIEW	11/23/05	N.B.G.
1	FOR MTS REVIEW	11/08/05	N.B.G.
NO. REVISIONS	DATE BY DATE	DEC. 2005	

DILLON CONSULTING

RELEASED FOR CONSTRUCTION
ORIGINAL SIGNED BY B. EBENSPANGER
DATE

ENGINEER'S SEAL
PROVINCE OF MANITOBA
ORIGINAL STAMPED BY
R. A. WIEBE
01/31/05
REGISTERED PROFESSIONAL ENGINEER

ENGINEER'S SEAL
PROVINCE OF MANITOBA
ORIGINAL STAMPED BY
S. S. RIHAL
01/31/05
REGISTERED PROFESSIONAL ENGINEER

THE CITY OF WINNIPEG
PUBLIC WORKS DEPARTMENT

Winnipeg

MARYLAND TWIN BRIDGES REHABILITATION PROJECT
EAST BRIDGE REHABILITATION

TYPICAL UTILITY CONDUITS ON BRIDGE DECK PLACING ARRANGEMENT AND LAYOUT
3 OF 3

CITY DRAWING NUMBER **B108-06-09**
SHEET **09** OF **38**

CONSULTANT PROJECT NO. **05-5069-1000**