

LUMINAIRE SCHEDULE

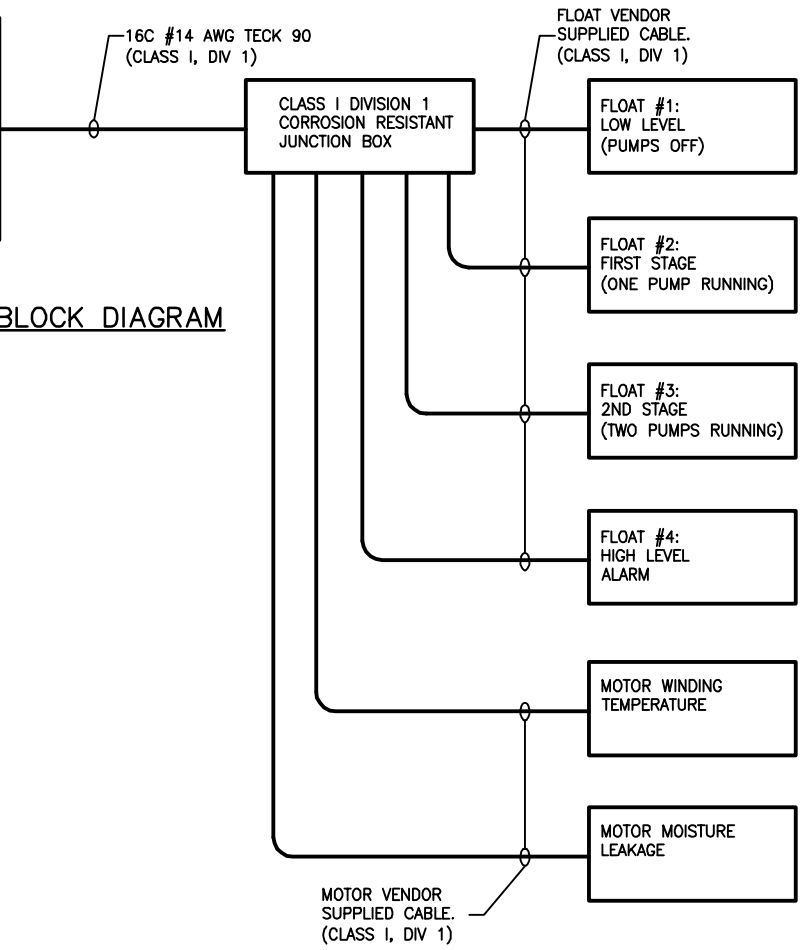
TYPE	MANUFACTURER	CATALOGUE NUMBER.	LAMPS		VOLTS	MOUNTING	COMMENTS	NOTES
			QTY.	TYPE				
A	CROUSE HINDS	EVCX-100W-A19 C/W WIRE GUARD	1	100W A19	120	S/W	CLASS I DIV I HAZARDOUS FIXTURE	

GENERAL NOTES:
1. PROVIDE ALL MOUNTING ACCESSORIES AS REQUIRED.

S = SURFACE W = WALL TB = T-BAR
R = RECESSED V = VALANCE DW = DRYWALL
C = CEILING P = PENDANT CH = CHAIN
SH = STEM HUNG IS = INSULATED SOFFIT

NEMA 1 PUMPING STATION DUPLEX PUMP CONTROLLER (IN WEATHERPROOF NEMA 4 ENCLOSURE). PRODUCT SHALL BE GOULDS SES SERIES CONTROLLER OR APPROVED EQUAL. CONTROLLER SHALL BE COMPLETE WITH 2 HOA SWITCHES, RED ALARM LIGHT, REMOTE ALARM CONTACTS FOR HIGH LEVEL, MOTOR WINDING TEMPERATURE, AND MOTOR MOISTURE INGRESS.

DUPLEX PUMP BLOCK DIAGRAM
SCALE: NTS



100A
2P

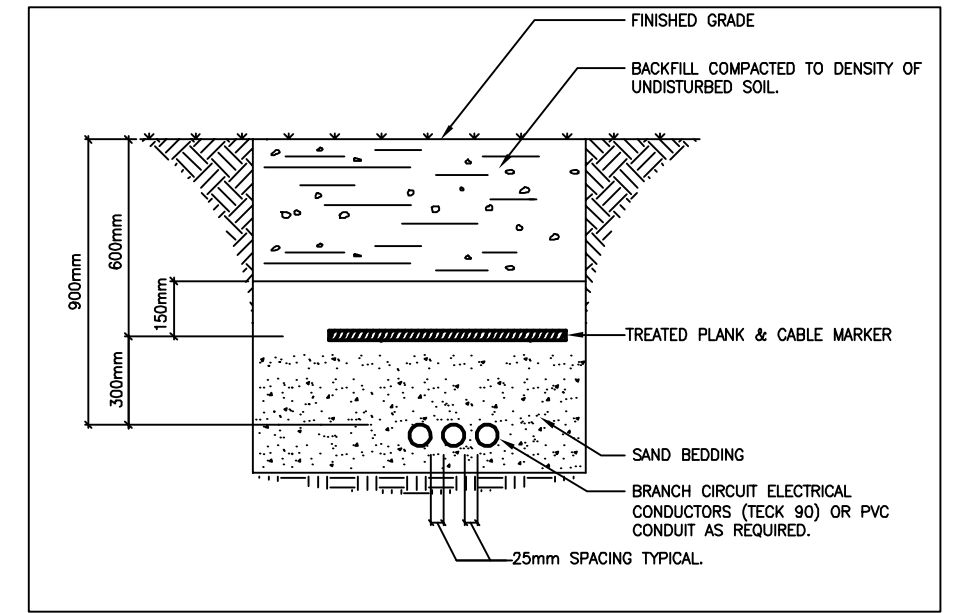
M

PANEL: MD1 VOLTAGE: 120/240
BUS: 100A PHASE: 1
WIRE: 3

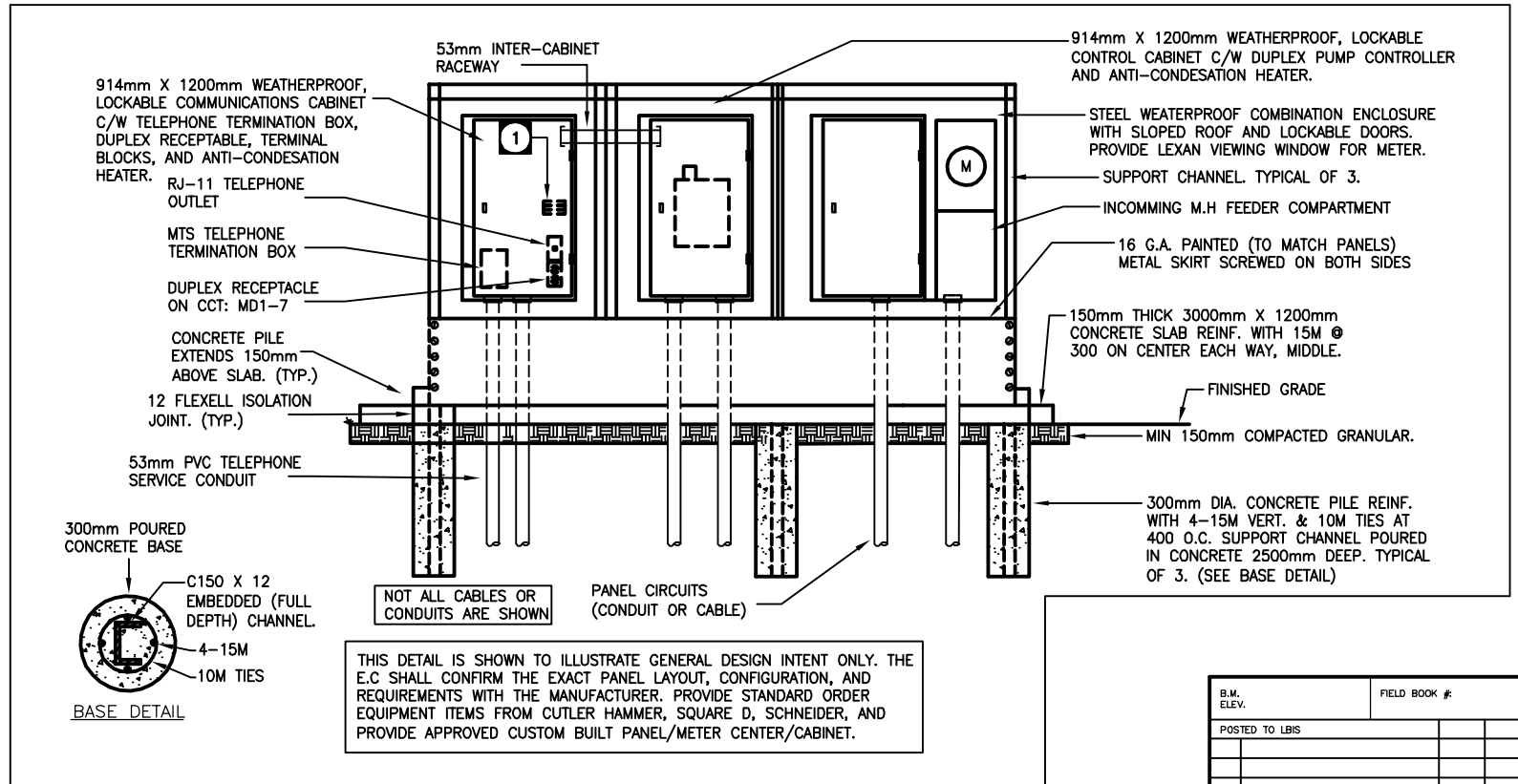
DESCRIPTION	LOAD WATTS	BKR SIZE	CIRCUIT	BKR SIZE	LOAD WATTS	DESCRIPTION
LIGHTING	800	15	1	2		
EXHAUST FAN: EF-1	667	15	3	4	60	DUPLEX CONTROL: 'DC1'
ANTI-CONDENSATION HEATER	200	15	5	6		SPACE
TELEPHONE CAB. RECEPTACLE	500	15	7	8		SPACE
SPARE		15	9	10		SPACE
SPARE		15	11	12		SPACE
SPACE			13	14		SPACE
SPACE			15	16		SPACE
SPACE			17	18		SPACE

MISC.	0.7 kW	LTG.	0.8 kW	MOT.	8487 kW	TOTAL	10 kW
-------	--------	------	--------	------	---------	-------	-------

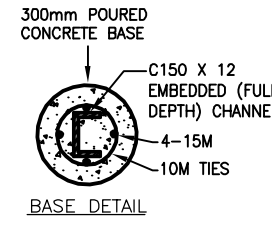
- GENERAL NOTES**
- CONFIRM ALL ELECTRICAL REQUIREMENTS WITH ALL DRAWINGS AND SPECIFICATIONS. PROVIDE ALL ELECTRICAL CONNECTIONS AS SPECIFIED THEREIN.
 - WIRING AND INSTALLATION METHODS SHALL COMPLY WITH ALL CODES AND STANDARDS TO SUIT THE AREA CLASSIFICATION INDICATED.
 - PROVIDE ALL DEVICES/ITEMS SHOWN HEREIN, PLUS ANY ADDITIONAL ACCESSORIES AS REQUIRED FOR A COMPLETE INSTALLATION.
 - PROVIDE CLASS I, DIV. 1 SEALS AT THE CABLE ENTRY POINTS INTO THE EXTERIOR PANELS / ENCLOSURES FOR ALL CABLES WHICH ENTER THE PUMPING STATION.
- CONCRETE NOTES**
- CONCRETE: TO CSA A23.1 LATEST EDITION, 30MPA TYPE 50 CEMENT, 20mm AGREGATE, 5-8% AIR.
 - REINFORCING STEEL: TO CSA G30.18 LATEST EDITION, GRADE 400W.
 - STRUCTURAL STEEL: TO CSA G40.21, LATEST EDITION, GRADE 300W OR 350W.
- SPECIFIC NOTES**
- PROVIDE SAK4 TERMINAL BLOCKS C/W ALL ACCESSORIES (SUCH AS MOUNTING RAIL, END BLOCKS, ETC), TERMINATE 6C#14 AWG ON TERMINAL BLOCKS FROM DUPLEX PUMP CONTROLLER HIGH LEVEL ALARM (ACTIVATED THROUGH FLOAT #4) RELAY OUTPUT ALARM, MOTOR WINDING TEMPERATURE ALARM, AND MOTOR MOISTURE ALARM CONTACTS.



BRANCH CIRCUIT TRENCH DETAIL
SCALE: NTS



WEATHERPROOF PANEL / CONTROL CABINET ENCLOSURES
SCALE: NTS



THIS DETAIL IS SHOWN TO ILLUSTRATE GENERAL DESIGN INTENT ONLY. THE E.C SHALL CONFIRM THE EXACT PANEL LAYOUT, CONFIGURATION, AND REQUIREMENTS WITH THE MANUFACTURER. PROVIDE STANDARD ORDER EQUIPMENT ITEMS FROM CUTLER HAMMER, SQUARE D, SCHNEIDER, AND PROVIDE APPROVED CUSTOM BUILT PANEL/METER CENTER/CABINET.

APCGM
Certificate of Authorization
SNC-Lavalin Engineers & Constructors Inc. (MB)
No. 2365 Expiry: April 30, 2006

B.M. ELEV.	FIELD BOOK #	CITY OF WINNIPEG WATER AND WASTE ENGINEERING DIVISION		ENGINEER'S SEAL	THE CITY OF WINNIPEG WATER AND WASTE DEPARTMENT
POSTED TO LBS		DESIGNED BY: DEB	CHECKED BY: EMR	ORIGINAL SIGNED: E.M.RYCZKOWSKI 09/22/05	
		DRAWN BY: DEB	APPROVED BY: EMR		2006 CRESCENT DRIVE & IRVING PLACE WASTEWATER SEWER AND PUMPING STATION INSTALLATIONS
2 ISSUED FOR TENDER	09/22/05	HOR. SCALE: AS SHOWN	RELEASED FOR CONSTRUCTION		WASTEWATER PUMPING STATION ELECTRICAL SCHEDULES AND DETAILS
1 ISSUED FOR OWNER REVIEW	09/14/06	VERTICAL SCALE: SHOWN			SHEET 15 OF 15 CITY DRAWING NUMBER: 05923
NO. REVISIONS	DATE BY DATE	2006 08 03			

BID OPPORTUNITY: 509-2006
FILENAME: 05923.dwg
PLOT DATE: 2006 08 03