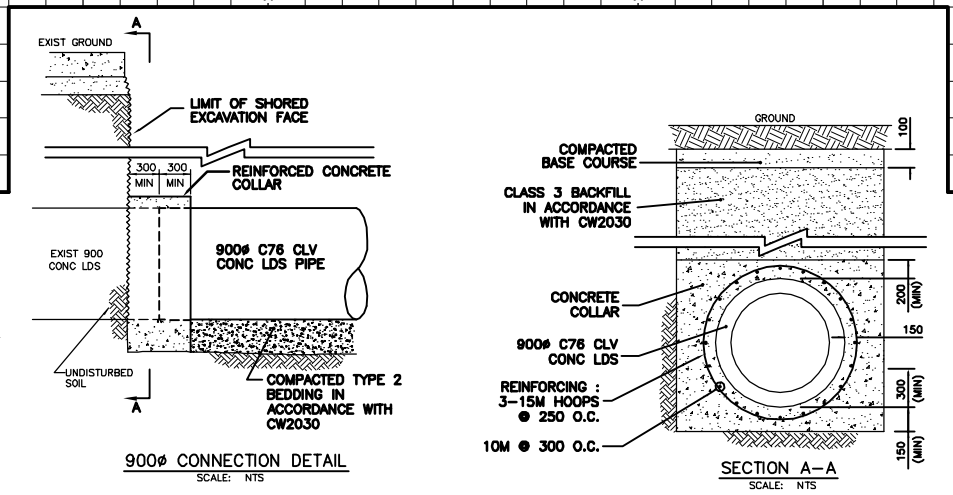
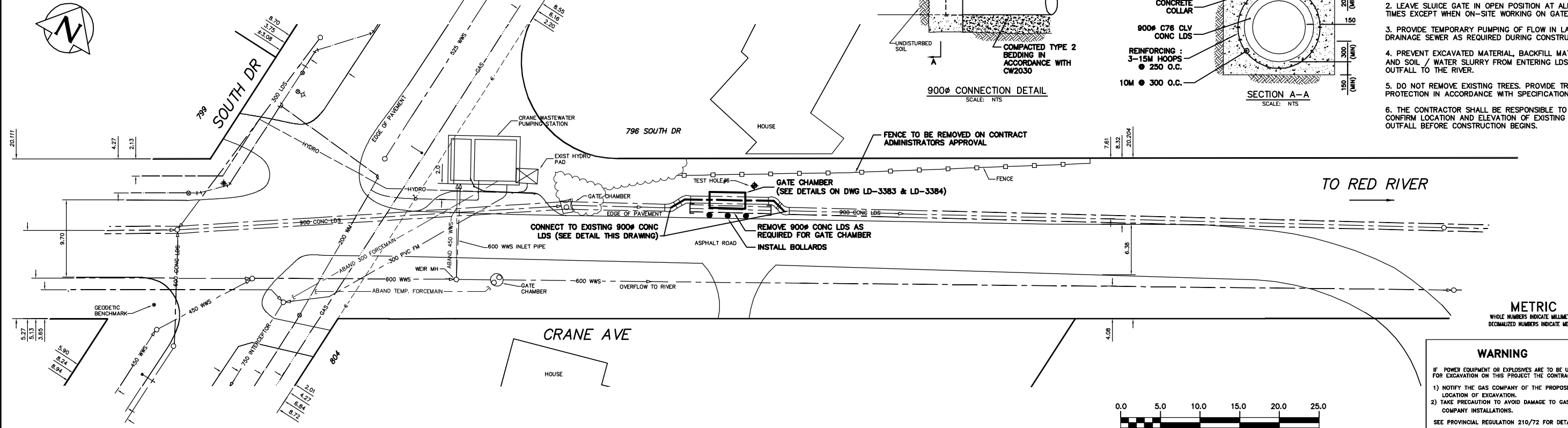


NOTE: CHAINAGES SHOWN ARE ALONG N. P. OF CRANE AVE.

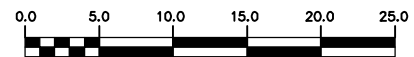


- CONSTRUCTION NOTES:**
- RESTORE ALL DISTURBED GRASS AREAS & BERM WITH IMPORTED TOP SOIL AND SOD IN ACCORDANCE WITH CW 3510.
 - LEAVE SLUICE GATE IN OPEN POSITION AT ALL TIMES EXCEPT WHEN ON-SITE WORKING ON GATE.
 - PROVIDE TEMPORARY PUMPING OF FLOW IN LAND DRAINAGE SEWER AS REQUIRED DURING CONSTRUCTION.
 - PREVENT EXCAVATED MATERIAL, BACKFILL MATERIAL AND SOIL / WATER SLURRY FROM ENTERING LDS OUTFALL TO THE RIVER.
 - DO NOT REMOVE EXISTING TREES. PROVIDE TREE PROTECTION IN ACCORDANCE WITH SPECIFICATIONS.
 - THE CONTRACTOR SHALL BE RESPONSIBLE TO CONFIRM LOCATION AND ELEVATION OF EXISTING OUTFALL BEFORE CONSTRUCTION BEGINS.



METRIC
WHOLE NUMBERS INDICATE MILLIMETRES
DECIMALIZED NUMBERS INDICATE METRES

WARNING
IF POWER EQUIPMENT OR EXPLOSIVES ARE TO BE USED FOR EXCAVATION ON THIS PROJECT THE CONTRACTOR
1) NOTIFY THE GAS COMPANY OF THE PROPOSED LOCATION OF EXCAVATION.
2) TAKE PRECAUTION TO AVOID DAMAGE TO GAS COMPANY INSTALLATIONS.
SEE PROVINCIAL REGULATION 210/72 FOR DETAILS



200 WM		200 WM		SL, HYDRO		150 WM		WATERMAIN		150 WM	
+	WATERMAIN	+	200 WM	---	SL, HYDRO	---	150 WM	+	WATERMAIN	+	150 WM
+	HYDRANT	+	200 WM	---	MTS	---	150 WM	+	HYDRANT	+	150 WM
+	VALVE	+	200 WM	---	TRAFFIC SIGNALS	---	150 WM	+	VALVE	+	150 WM
+	525 LDS	+	525 LDS	---	GAS	---	50 GAS	+	300 LDS	+	300 LDS
+	375 WWS	+	375 WWS	---	SURVEY BAR	---	250 WWS	+	250 WWS	+	250 WWS
○	MANHOLE	○	MANHOLE	---	FENCE	---	FENCE	○	MANHOLE	○	MANHOLE
□	CATCH BASIN	□	CATCH BASIN	---	POLE - HYDRO, MTS	---	POLE - HYDRO, MTS	□	CATCH BASIN	□	CATCH BASIN
▽	CURB INLET	▽	CURB INLET	---	CURB STOP	---	CURB STOP	▽	CURB INLET	▽	CURB INLET
+	JUNCTIONS	+	JUNCTIONS	---	GUY ANCHOR	---	GUY ANCHOR	+	JUNCTIONS	+	JUNCTIONS
+	CULVERT	+	CULVERT	---	LIGHT STANDARD	---	LIGHT STANDARD	+	CULVERT	+	CULVERT
+	ANODE	+	ANODE	---	TREE	---	TREE	+	ANODE	+	ANODE
---	EXISTING	---	LEGEND-PLAN	---	PROPOSED	---	EXISTING	---	LEGEND-PROFILE	---	PROPOSED

LOCATION APPROVED
UNDERGROUND STRUCTURES

SUPV. U/G STRUCTURES COMMITTEE DATE: _____

NOTE:
LOCATION OF UNDERGROUND STRUCTURES AS SHOWN ARE BASED ON THE BEST INFORMATION AVAILABLE BUT NO GUARANTEE IS GIVEN THAT ALL EXISTING UTILITIES ARE SHOWN OR THAT THE GIVEN LOCATIONS ARE EXACT. CONFIRMATION OF EXISTENCE AND EXACT LOCATION OF ALL SERVICES MUST BE OBTAINED FROM THE INDIVIDUAL UTILITIES BEFORE PROCEEDING WITH CONSTRUCTION.

CITY OF WINNIPEG
WATER AND WASTE
ENGINEERING DIVISION

DESIGNED BY: DGS
DRAWN BY: CJH/PB
HOR. SCALE: 1:250
VERTICAL SCALE: 1:50
DATE: 2006.07.27

CHECKED BY: TW/KZ
APPROVED BY: KZ
RELEASED FOR CONSTRUCTION: _____
DATE: _____

ENGINEER'S SEAL
ORIGINAL SIGNED BY: K.R. ZUREK
DATE: 06/07/28

THE CITY OF WINNIPEG
WATER AND WASTE DEPARTMENT

2006 OUTFALL GATE CHAMBER
CONSTRUCTION
CRANE AVENUE
LDS OUTFALL GATE CHAMBER
SITE PLAN

SHEET 8 OF 12
CITY DRAWING NUMBER
LD-3382

TENDER No. 505-2006
FILENAME: LD-3382.dwg
PLOT DATE: 2006 07 28